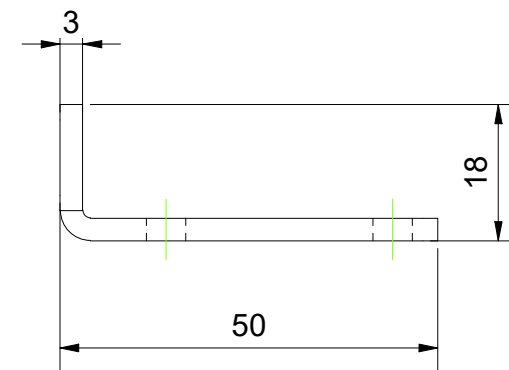
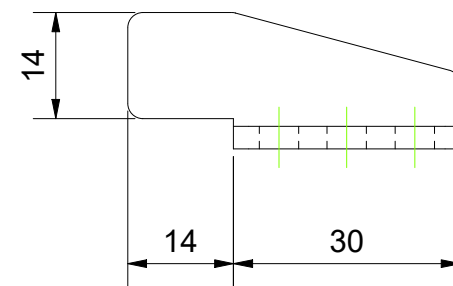
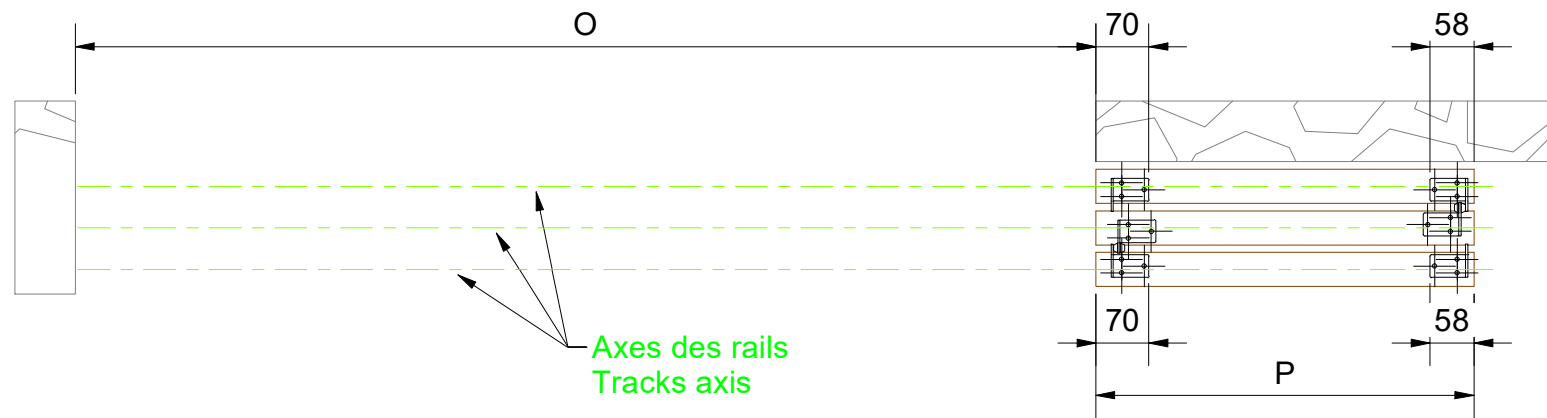
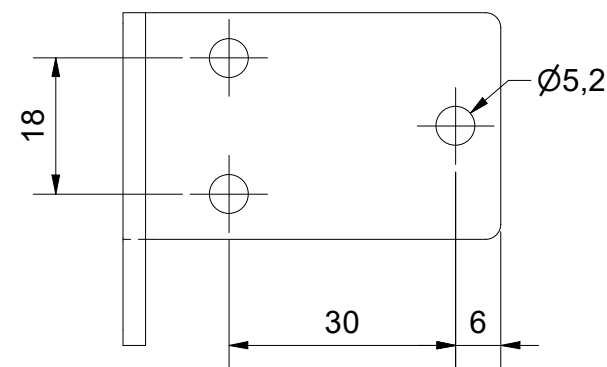
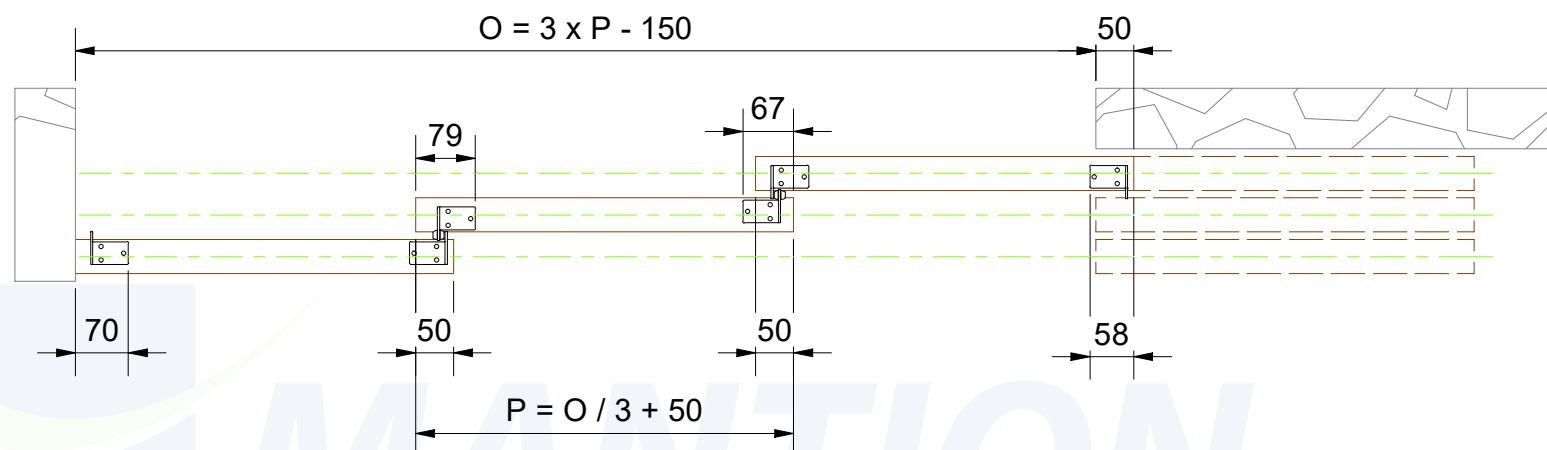


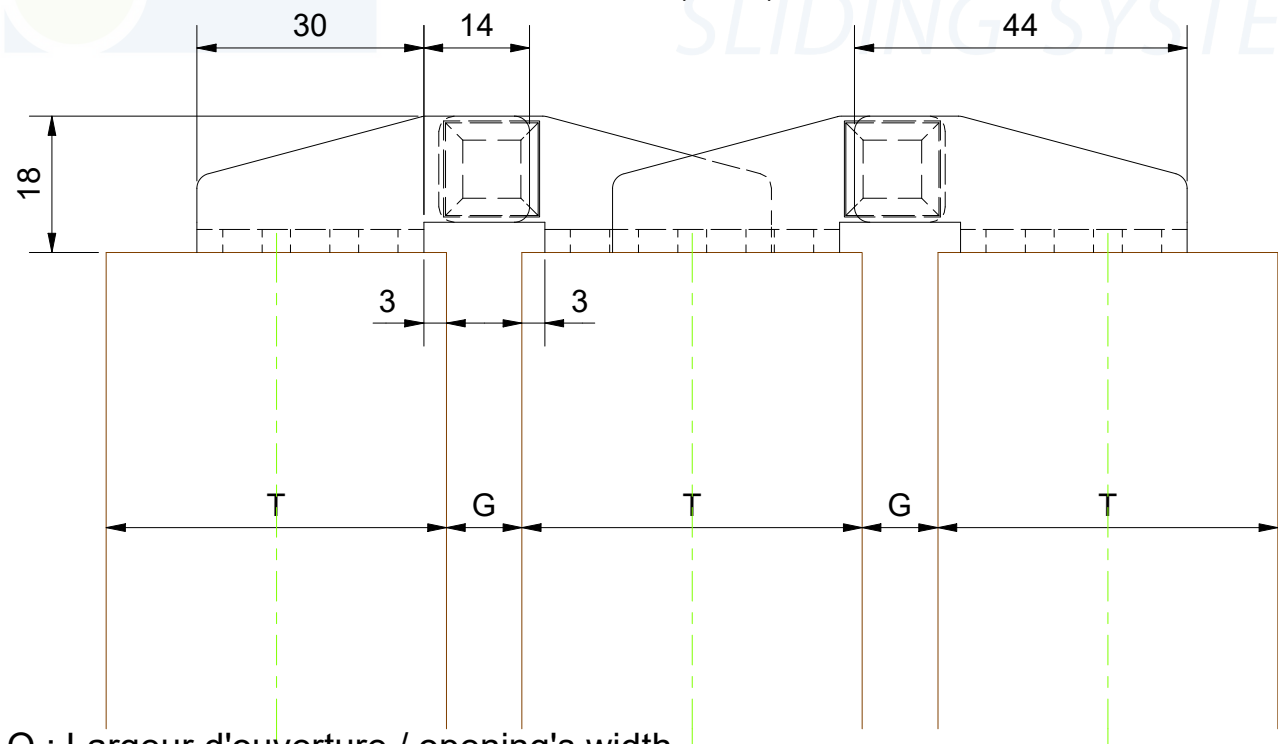
A-A (1 : 10)



B-B (1 : 10)

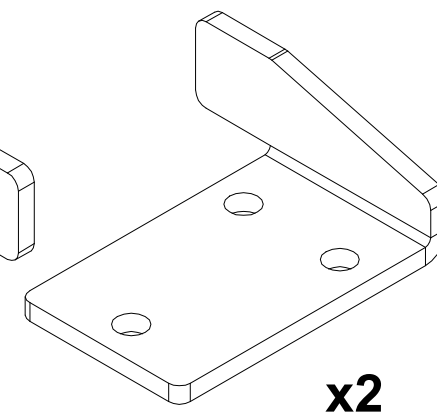
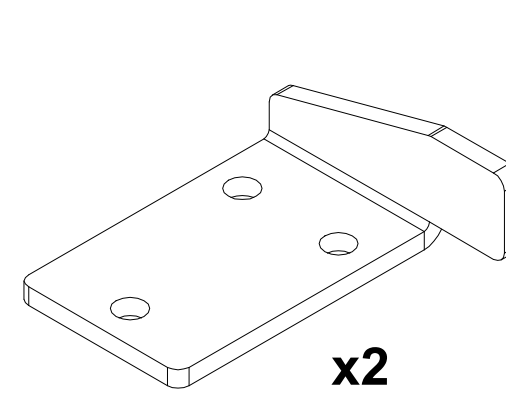
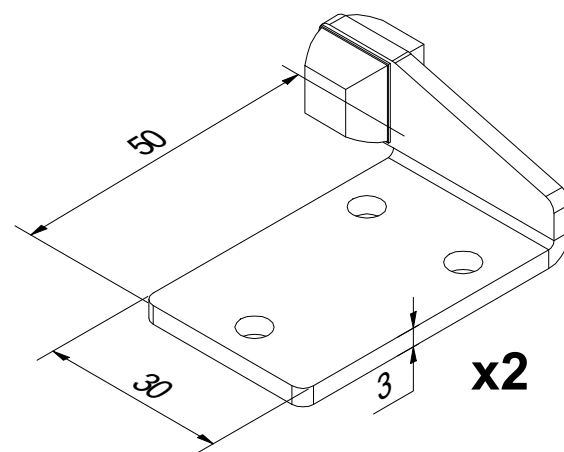


C-C (1 : 1)



Tampons de rappel pour 3 panneaux télescopiques sur 3 rails parallèles.  
 Refoulement des panneaux à droite de l'ouverture.  
 Matière : acier inoxydable A2, et caoutchouc

Angle plates to move simultaneously 3 panels on 3 parallel tracks.  
 Parking zone on the right.  
 Material : stainless steel 304L, and rubber



O : Largeur d'ouverture / opening's width  
 P : Largeur de panneau / panel's width  
 T : Epaisseur de panneau / panel's thickness  
 G : jeu entre les panneaux / gap between panels (5 mini, 13 maxi)

**MANTION**  
 SYSTÈMES COULISSANTS  
 7, rue Gay Lussac  
 25000 BESANCON

Référence  
 Item Nr:

**TRD3**

Rail associé  
 Combined track: