

Kit pour porte coulissante en verre 80 Kg MAX
 Pour baie comprise entre 2130 et 2330 mm
 Fixation plafond

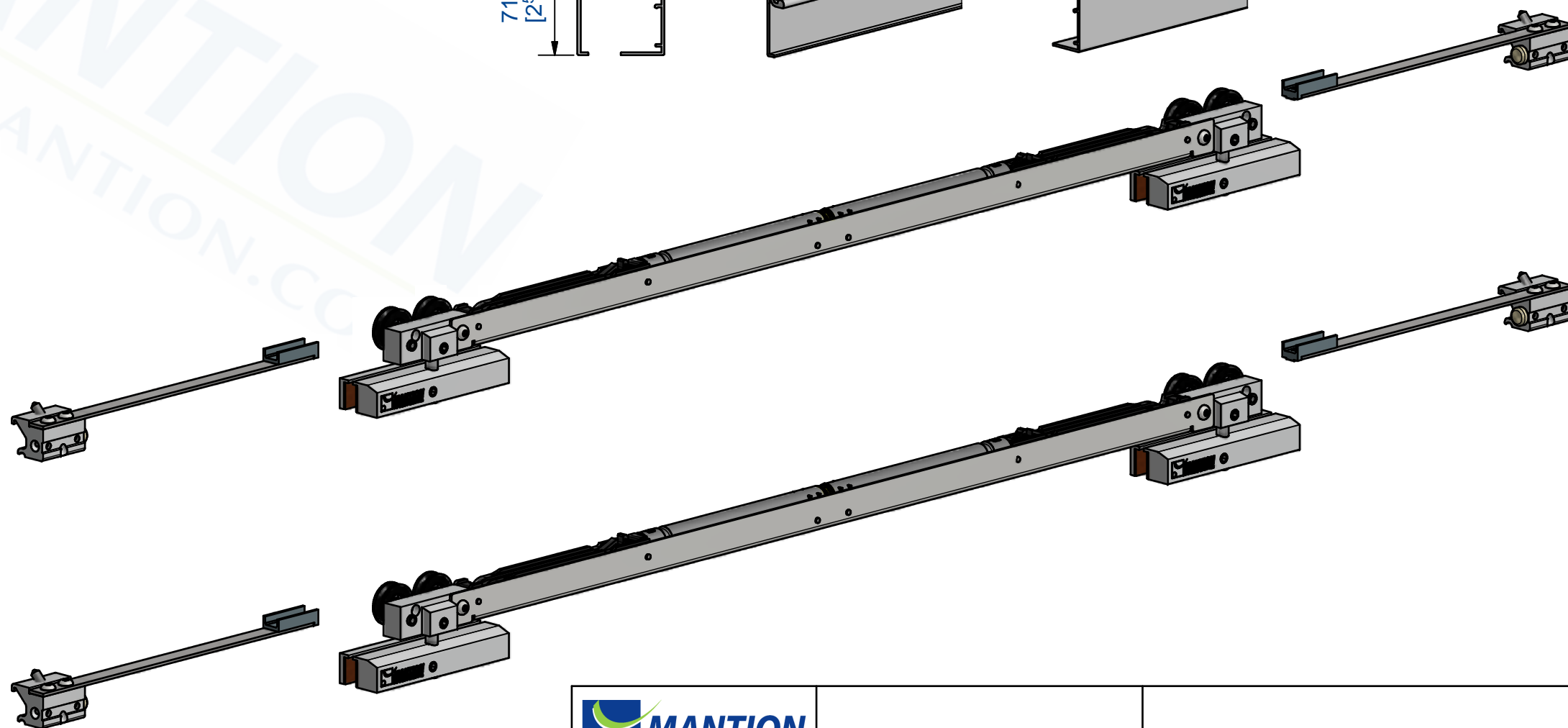
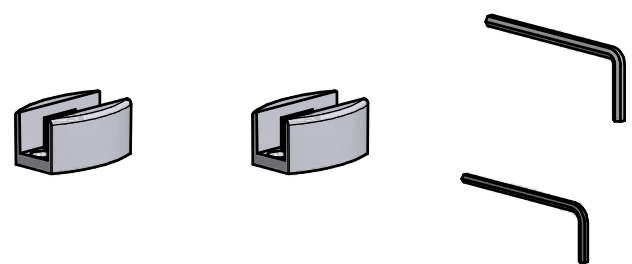
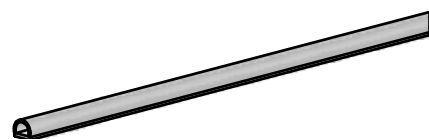
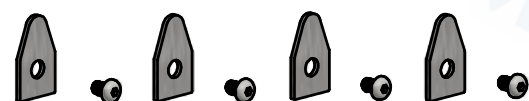
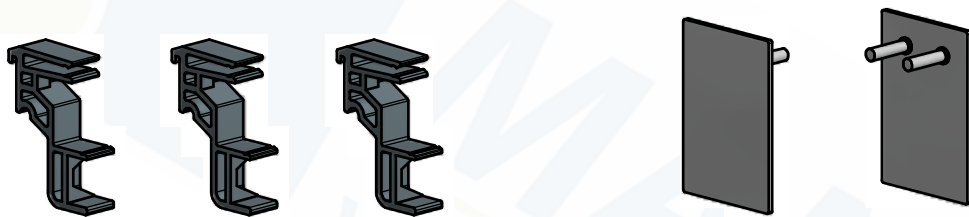
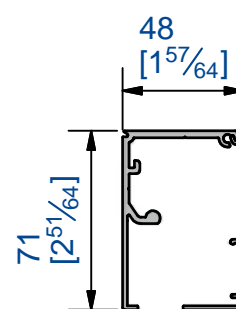
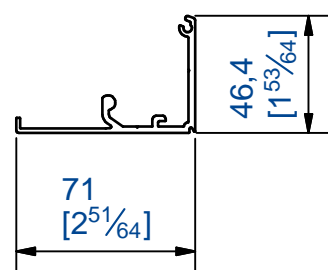
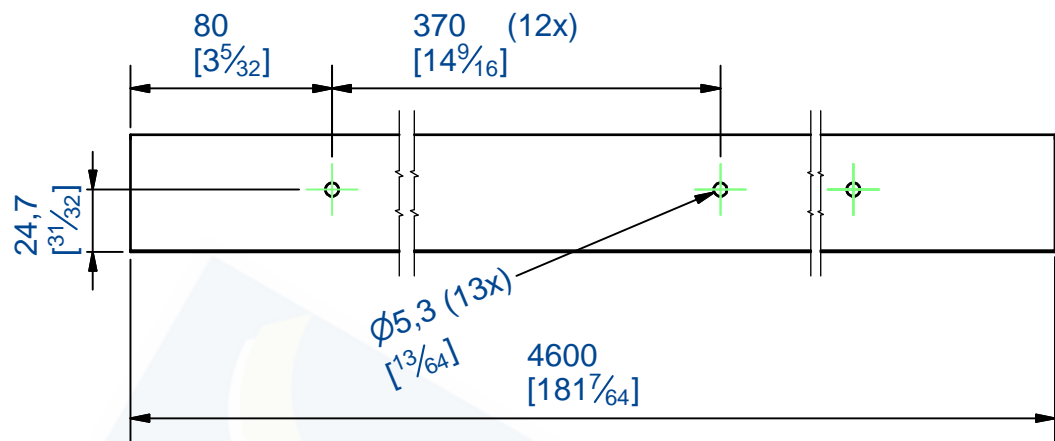
Kit for sliding glass door 80 Kg MAX
 Bay between 2130 and 2330 mm
 Ceiling fixing

Composition du kit:

- 1 rail aluminium anodisé avec trous de fixation
 - 1 bandeau en aluminium anodisé : L 4.60m
 - 3 clips de fixation bandeau
 - 2 kits montures avec pinces verre et amortisseurs
 - 4 butées antidéraillement
 - 2 butées gauches
 - 2 butées droites
 - 1 joint autocollant pour champs de porte
 - 2 embouts d'extrémité de rail
 - 2 guides bas
 - Notice et clés de montage
- Verre non fourni

Composition of the kit:

- 1 anodized aluminum track with mounting holes
 - 1 anodised aluminum pelmet. Length 4.60m
 - 3 pelmet clips
 - 2 gear sets with glass clamps and shock absorbers
 - 4 anti-lift devices
 - 2 left end stops
 - 2 right end stops
 - 1 seal for door edge
 - 2 anodized aluminum end caps
 - 2 bottom guides
 - Installation instructions and tools
- Glass not supplied



MANTION
 FERRURES DE PORTES COULISSANTES
 MANUTENTION PAR MONORAIL
 7, rue Gay Lussac
 25000 BESANCON

Référence Item Nr: **GB0217**

Rail associé
 Combined track: