



## Premium sliding system **SAF<sup>®</sup>** **WITH BLACK-PAINTED ALUMINIUM PELMET**



### Simple, reliable and quick to install!

#### ■ SILENT:

Rollers mounted on ball bearings  
and new-generation SOFT-CLOSERS

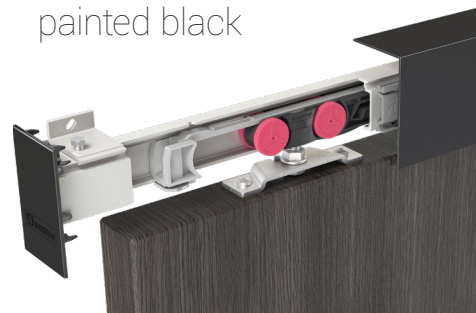
#### ■ AESTHETICS:

Design aluminium pelmets, painted black

#### ■ PRACTICAL:

Wall brackets > easy adjustment and fixing  
Pelmets > easy installation using flexible clips to absorb slight  
wall imperfections

Pelmets & end caps  
painted black





## SET SAF®20 BLACK

Item no.	Description
<b>SAF20-195-BLACK</b>	Set <b>SAF20</b> for 1 door weighing <b>10 - 20 Kg</b> :
	- 1 track <b>13108</b> length <b>1.95 m</b> .
	- 5 angle brackets <b>13013</b>
	- 1 pelmet <b>13041 BLACK</b> Includes 3 clips
	- 2 end caps <b>13045 BLACK</b>
	- 2 rollers <b>13218</b> + 2 plates <b>13036</b>
	- 1 adjustable end stop <b>11213</b>
	- 1 soft-closer <b>M65S</b>
	- 1 floor guide <b>1103R</b>
	- 1 <b>Buly</b> (bubble level)
- Spanner, screws and assembly instructions	

**20  
KG**

## SET SAF®60 BLACK

Item no.	Description
<b>SAF60-195-BLACK</b>	Set <b>SAF60</b> for 1 door weighing <b>21 - 60 Kg</b> :
	- 1 rail <b>13108</b> length <b>1.95 m</b> .
	- 5 angle brackets <b>13013</b>
	- 1 pelmet <b>13041 BLACK</b> Includes 3 clips
	- 2 end caps <b>13045 BLACK</b>
	- 2 rollers <b>13218</b> + 2 plates <b>13036</b>
	- 1 adjustable end stop <b>11213</b>
	- 1 soft-close <b>M66S</b>
	- 1 floor guide <b>1103R</b>
	- 1 <b>Buly</b> (bubble level)
- Spanner, screws and assembly instructions	

**60  
KG**

## SECOND SOFT-CLOSER OPTION

<b>M65S</b>	Softcloser for gentle closing of doors (100 mm). Softcloser automatically follows door to its closed position.. Suitable for doors weighing <b>10 - 20 KG (SAF20-195-BLACK)</b> . It is recommended that 2 softclosers be used for doors with a width of 850 mm or more.
<b>M66S</b>	Ditto for doors weighing 21 à 60 KG (SAF60-195-BLACK).

## SETS SAF®BLACK

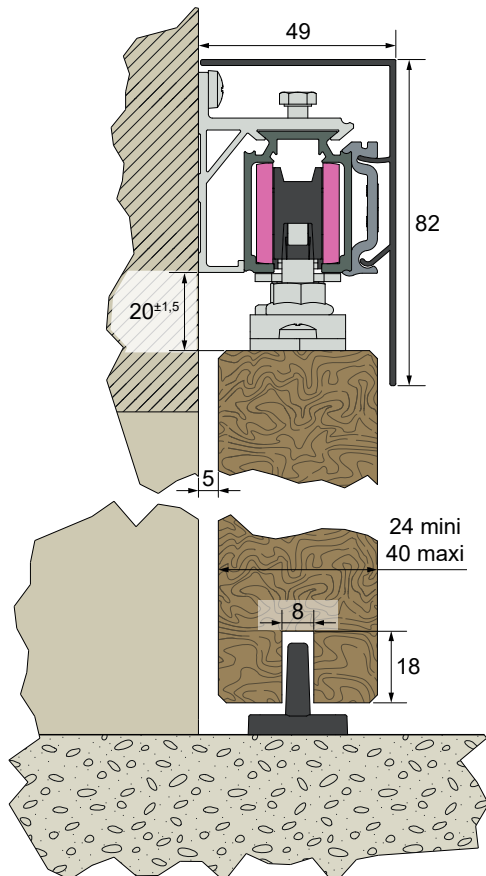
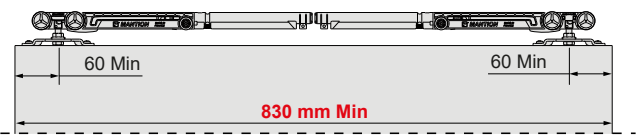


For the best operating results, choose a softcloser adapted to the dead load of your door:

Innovation MANTION :  
M65S : Damper for lightweight doors

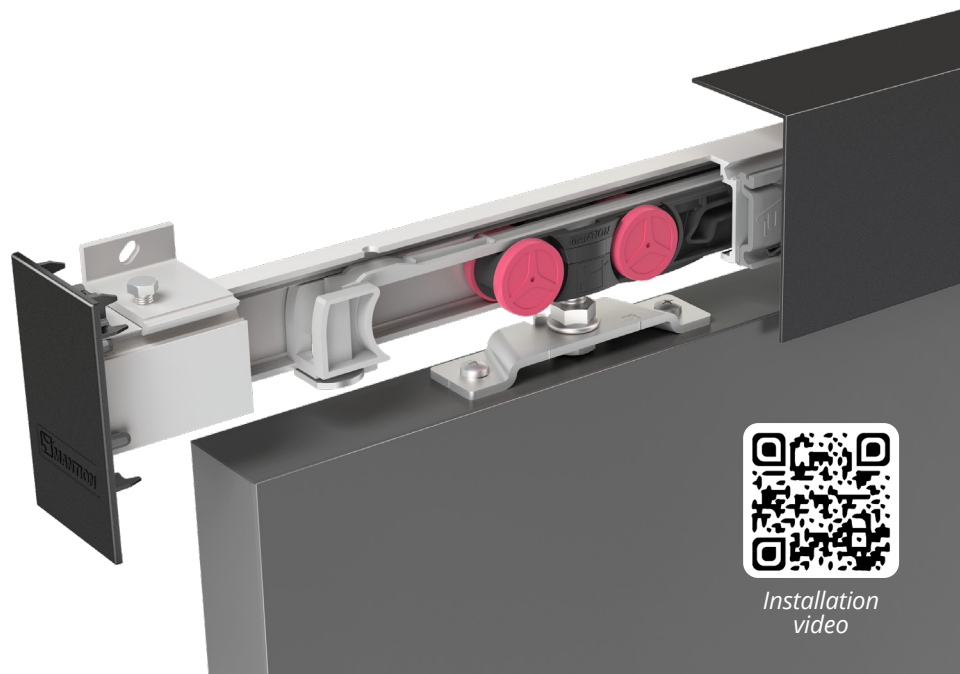


Conditions for 2 soft-closers **M65S** or **M66S**



FOR THE BEST OPERATING RESULTS  
INSTALL **2** SOFT-CLOSERS

One for the closing...  
and one for the opening!



Installation  
video