

**NEW**



**SYCOMM** Solar  
by MANTION

MADE IN FRANCE  
SINCE 1920

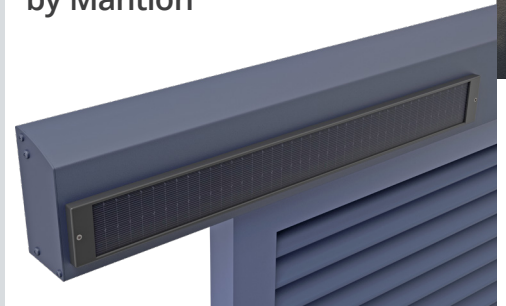
# Solar motorisation for sliding shutters



## Simple, reliable and quick to install!

- No need to connect to the mains supply
- Plug & Play : connect components using simple connectors (motor / solar panel / battery)
- Self Sufficient: Up to 30 days of autonomy without external power
- Can be integrated with standard home automation systems
  - Capacity of 1 to 4 panels with total weight of 200kgs max
  - Integrated brushless technology

Designed and Manufactured  
by Manton



DESIGNER AND MANUFACTURER OF SLIDING SYSTEMS SINCE 1920

[www.manton.com](http://www.manton.com)

**MANTION**  
SLIDING SYSTEMS

MANTION SAS - 7, rue Gay Lussac - 25000 BESANÇON / Tél. +33 (0) 3 81 50 56 77 / Fax. +33 (0) 3 81 53 29 76 / [manton@manton.com](mailto:manton@manton.com)



## ROLLERS - PLATES - STOPS

### ROLLERS



**11280LXA2**

Mounting with 4 rollers, ball-bearing axles, M8 A2 stainless steel screws (93 mm). 80 kg max. / panel.



**11282LXA4**

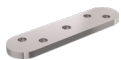
Mounting with 4 rollers, ball-bearing axles, M8 A4 stainless steel screws (93 mm). Max. 120 kg / panel.

### PLATES



**0026XA2**

A2 stainless steel plate to be screwed on edge. Panel thickness: min. 25 mm. For panels weighing up to 80 kg.



**0026XA4**

A4 stainless steel plate to screw on edge. For panels weighing up to 120 kg.

### STOP



**11286XA2**

Rail stop with two anchor points. Supplied with A2 stainless steel screws.

## TRACK & PELMET - CEILING MOUNTING

### TRACK



**11208P/600\***

Raw aluminium rail, section 39 x 36 mm, drilled every 450 mm. Length = 6 m.

### PELMET & TOP MOUNTING



**11261/600\***

Raw aluminium pelmet. Length = 6 m.



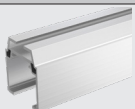
**11294A**

Set of 5 anodised aluminium brackets. For mounting banner 11261. Supplied with A4 stainless steel screws. Fixes every 450 mm.

*\*other lengths on request*

## TRACK & PELMET - WALL MOUNTING

### TRACK



**11208/600\***

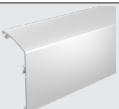
Raw aluminium rail, cross-section 39 x 36 mm. Length = 6 m.

### PELMET & WALL MOUNTING - single track



**11293**

Adjustable fixing bracket in raw aluminium. Supplied with A2 stainless steel screws. Fixes every 660 mm max.



**11263L/600\***

Raw aluminium pelmet. Length = 6 m.



**11266M**

End cap kit for 11263L fascia panel, consisting of: 2 raw aluminium end caps, 2 fastening clips for pelmet, 1 support for end cap on motor side, 8 A4 stainless steel fastening screws.

## PELMET & WALL MOUNTING - single and dual track



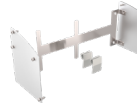
**11293D**

Double adjustable fixing bracket in raw aluminium. Supplied with A2 stainless steel screws. Can be fixed every 660 mm max. (double channel 80 Kg) Can be fixed at intervals of up to 450 mm (single track 120 Kg)



**11264L/600\***

Raw aluminium pelmet. Length = 6 m.



**11267M**

Endcap kit for 11264L headband, consisting of: 2 raw aluminium end caps, 2 fastening clips for headband, 1 support for end cap on motor side, 8 A4 stainless steel fastening screws.

### ACCESSORIES



**11269**

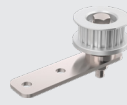
Set of 5 additional clamps in anodised aluminium for fixing the pelmet to the brackets. For use when the pelmet is longer than 3 m. (in addition to the two clamps already supplied in the end cap kit).

*\*other lengths on request*

## MOTORIZATION ACCESSORIES



**11286XA2-SYN** Rail stop with integrated return pulley.



**10190**

Offset return pulley.



**11291**

A2 stainless steel angle bracket.



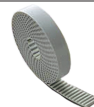
**10192**

A2 stainless steel drive bracket.



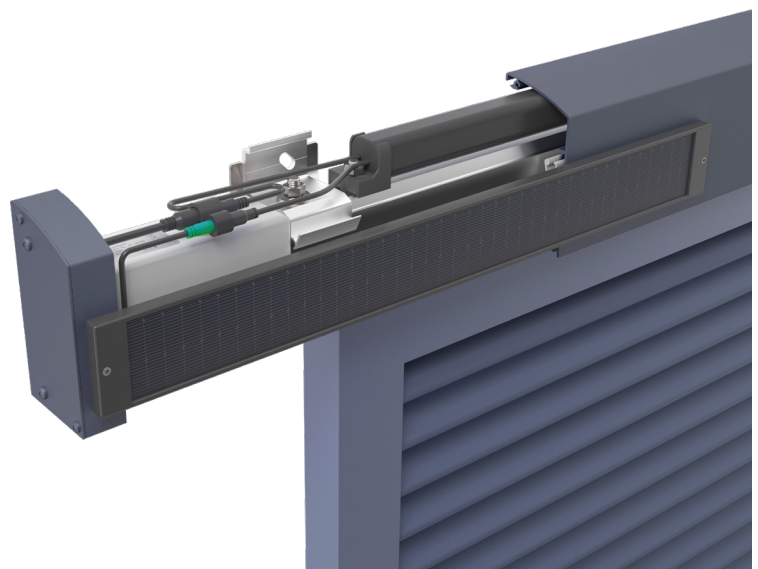
**10171**

A2 stainless steel fixed point assembly.



**10172/...**

Reinforced notched belt. Length = 2.5 / 5 / 7.5 / 10 / 15 / 25 and 50 m.





# SOLAR MOTORISATION for sliding shutters

## SYCOMM MOTORIZATION - RADIO CONTROL

**W0002540**  
with position-holding brake\*

Solar motorisation kit (12V DC power supply), with radio control comprising:

- 1 SYCOMM Solar motor (on-board electronics)
- 1 C0014200 radio remote control
- 1 solar panel
- 1 5100 mAh battery

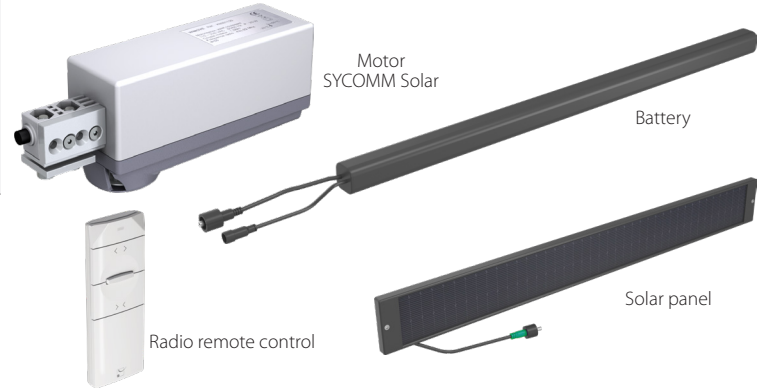
Guarantee 5 years

**W0002550**  
without position-holding brake\*\*

Solar motorisation kit (12V DC power supply), with radio control comprising:

- 1 SYCOMM Solar motor (on-board electronics)
- 1 C0014200 radio remote control
- 1 solar panel
- 1 5100 mAh battery

Guarantee 5 years



\* Sycomm **with position-holding brake**: the shutter is held in position: Holding force ~30 kg

\*\* Sycomm **without position-holding brake**: the system is reversible. Operation possible by applying a force < 5 kg

## SOLAR POWER SUPPLY

**K0001620**

Solar battery pack, supplied with two fixing kits (one to be fixed on the wall + one to be fixed on the 11208 track).  
Guarantee 5 years.

**C0014430**

Re-cuttable battery cover housing electro-galvanised steel (to be painted). Fits under the lintel using the battery pack supports.  
Length = 1250 mm.

**K0001630**

Solar panel, supplied with screws for direct mounting on the fascia panel + one adjustable wall mounting kit.  
Guarantee 5 years.

**C0014340**

3 m extension lead from solar motor to battery.

**C0014350**

3 m extension lead from solar panel to battery.

**C0014360**

230V DC/12V charger for the solar battery.

## RADIO CONTROL

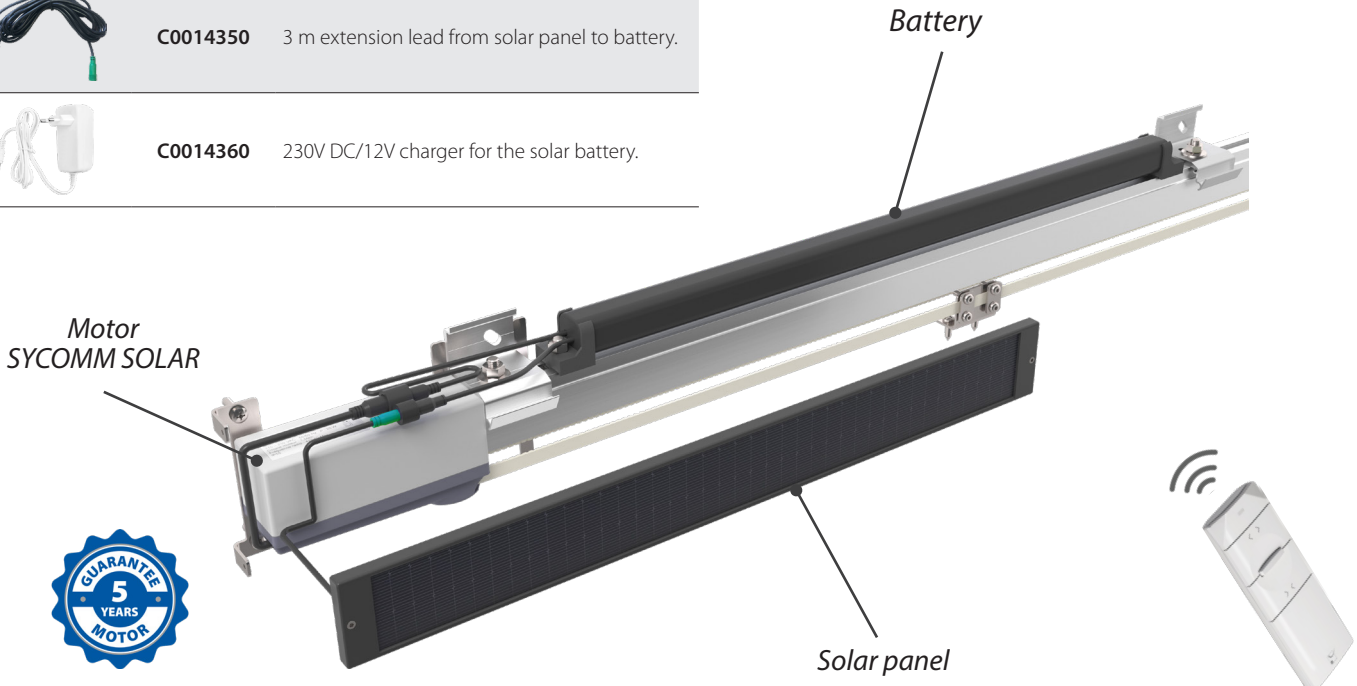
**C0014200**

433.92 MHz radio remote control.  
White colour - RAL 9016  
Guarantee 5 years.

**C0014200N**

433.92 MHz radio remote control.  
Black colour - RAL 9005  
Guarantee 5 years.

MADE IN FRANCE  
SINCE 1920



ONLINE CONFIGURATOR  
**SlidSoft**

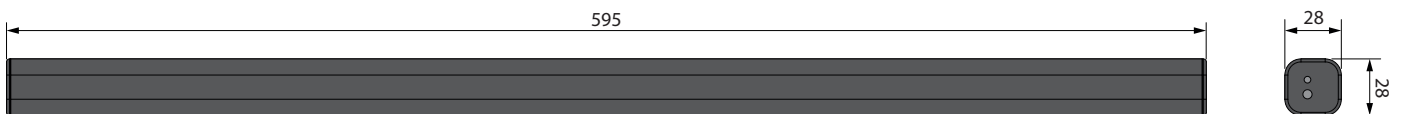
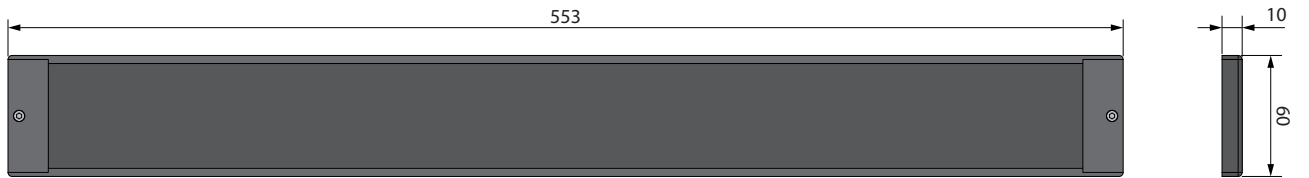
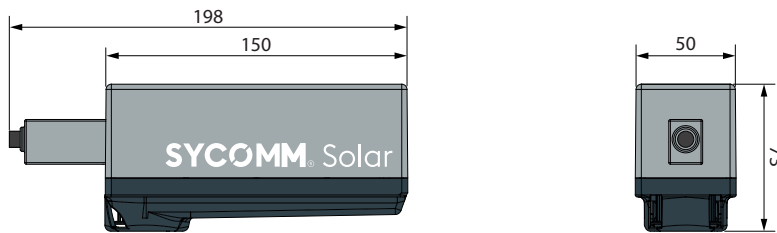
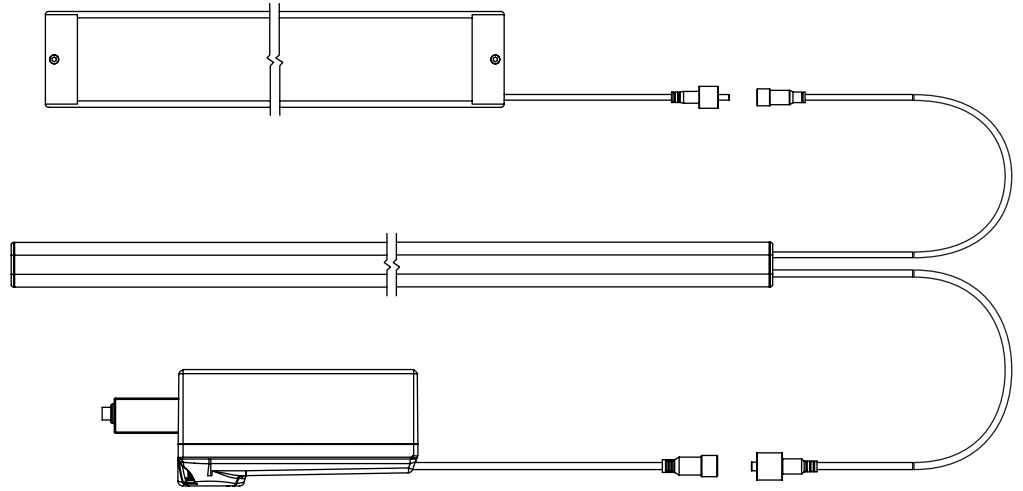
Deriving solution for your project is easy!

Enter the dimensions of your opening and choose additional options.  
Access to solution with plans.





## Plug & Play installation



### Sycomm<sup>®</sup> Solar motorization

Supply voltage	12V DC
Max power	25 W
Dimensions (L x W x H)	150 x 50 x 73 mm
Degree of protection	IP55
Type of limit switch	Dynamique (stop on obstacle)
Motor technology	Brushless
Linear speed	~ 60mm/s
Operating temperature	-20 à +60°C
Radio frequency	433.92 MHz
Motor cable length	30 cm (optional 3m extension)

### General data:

Soft start and stop - Obstacle detection

#### Complies with CE requirements as per:

EN60335-1:2013 ; EN60335-2-103:2004+A11:2009 ; NFP26341  
EN61000-6-1:2007 ; EN61000-6-2:2006 ; EN61000-6-3:2007 ; EN61000-6-4:2007 ; NF 26-341

#### Complies with European directives :

2006/95/CE ; 2006/42/CE ; 2004/108/CE ; 1999/5/CE ; 2002/95/CE

*NB: The values in the tables are given for information only, they depend on specific conditions and do not constitute a firm commitment on the part of Manton. Motor designed for domestic use and installation under a fascia panel.*