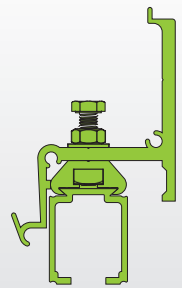




# System for sliding shutters WIN-SLIDE R



CAPACITY PER PANEL	80 kg - 120 kg
PANEL THICKNESS	20-40 mm, 40-80 mm
PANEL TYPES	Wood, aluminium, PVC...
TRACK	ALUMINIUM
MOVEMENT	STRAIGHT

## HANGERS & ACCESSORIES

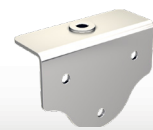
Item Nr.	Description
11218HCX	Hanger equipped with 4 rollers, pin mounted on ball bearings, M8 stainless steel screw - <b>80 kg</b> max./panel
11218HCX-3*	Ditto, with short screw (72 mm).
0026XA2	Stainless steel plate to be screwed on edge - min. panel 20 mm
0027XA2	Stainless steel plate to be screwed on flat side (80 x 58 mm) min. panel 30 mm
11213XA2	Stopper with stainless steel screw (adjustable force)



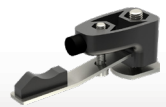
11218HCX



0026XA2



0027XA2



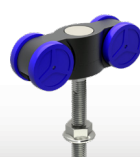
11213XA2

\* Not suitable for synchronised or motorised version

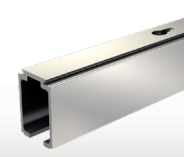
## TRACKS & ACCESSORIES – SINGLE CHANNEL - 80 KG

11108/	Anodized aluminium track, 33 x 27 mm cross-section <b>80 kg</b> drilled every 0.44 m, in lengths of 2 / 2.5 / 3 / 4 / 5 or 6 m.
11113	Adjustable mounting bracket <b>80 kg</b> with stainless steel screws and bolts Vertical adjustment = 10 mm – Horizontal adjustment = 12 mm
11113M	Joining bracket (to connect 2 tracks)
11163/	Raw aluminium pelmet* in lengths of 2.5 / 3 / 4 / 5 or 6 m
11166	Set of end pieces* comprising: - 2 raw aluminium end pieces for pelmet 11163 - 8 stainless steel 4.8x19 screws - 2 raw aluminium clips 11169
11011/	Anodized aluminium pelmet* to be snapped onto track 11108 To be used for ceiling mounting. Height = 63 mm – Length = 2 / 3 or 6 m
11169	Set of 4 aluminium clips* to fasten the pelmet onto the track (required for pelmets more than 3 m long)

\* Available in RAL colours upon request



11232HCX



11108/ - 11312/



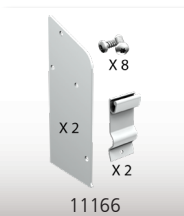
11113



11113M



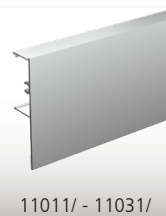
11163/



11166



11169



11011/ - 11031/

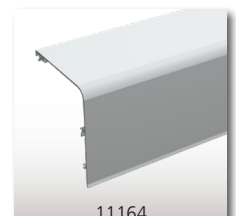
## TRACKS & ACCESSORIES – DUAL CHANNEL - 80 KG

11108/	Anodized aluminium track, 33 x 27 mm cross-section <b>80 kg</b> drilled every 0.44 m, in lengths of 2 / 2.5 / 3 / 4 / 5 or 6 m.
11113D	Dual adjustable mounting bracket <b>80 kg</b> with stainless steel screws and bolts Vertical adjustment = 10 mm – Horizontal adjustment = 12 mm
11113MD	Dual joining bracket (to connect 2 tracks)
11164/	Aluminium pelmet* - Length = 2.5 / 3 / 4 / 5 or 6 m
11167	Set of end pieces* comprising: - 2 aluminium end pieces for pelmet 11164 - 8 stainless steel 4.8x19 screws - 2 clips 11169
11169	Set of 4 aluminium clips* to fasten the pelmet onto the track (required for pelmets more than 3 m long)

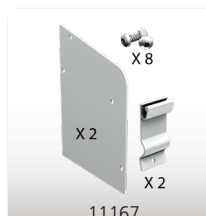
\* Available in RAL colours upon request



For use near the sea (less than 3 km)  
**Contact us**



11164



11167

## SPECIAL SHADE SCREEN MOUNTING - 80 MM MAX - 120 KG

11232HCX	Hanger equipped with 4 rollers, pin mounted on ball bearings, M8 stainless steel screw - <b>120 kg</b> max./panel
11312/	Anodized aluminium track, 37 x 28 mm cross-section <b>120 kg</b> drilled every 0.30 m, in lengths of 2 / 3 / 5 or 6 m
11113BR	Adjustable mounting bracket with stainless steel screws and bolts for panels up to 80 mm thick and <b>120 kg</b> max. (track 11312) Vertical adjustment = 10 mm – Horizontal adjustment = 25 mm
11164/	Aluminium pelmet* – Length = 2.5 / 3 / 4 / 5 or 6 m
11031/	Anodized aluminium pelmet* to be snapped onto track 11312 To be used for ceiling mounting. Height = 67 mm - Length = 2 or 3 m.



11113BR

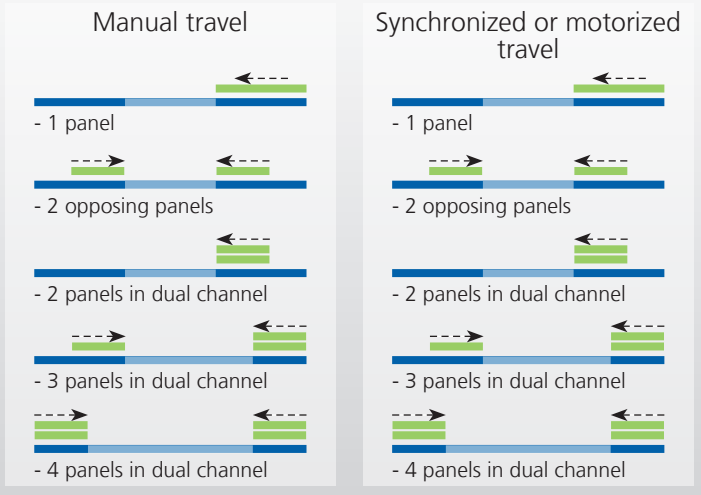


11113D



11113MD

# Possible configurations:

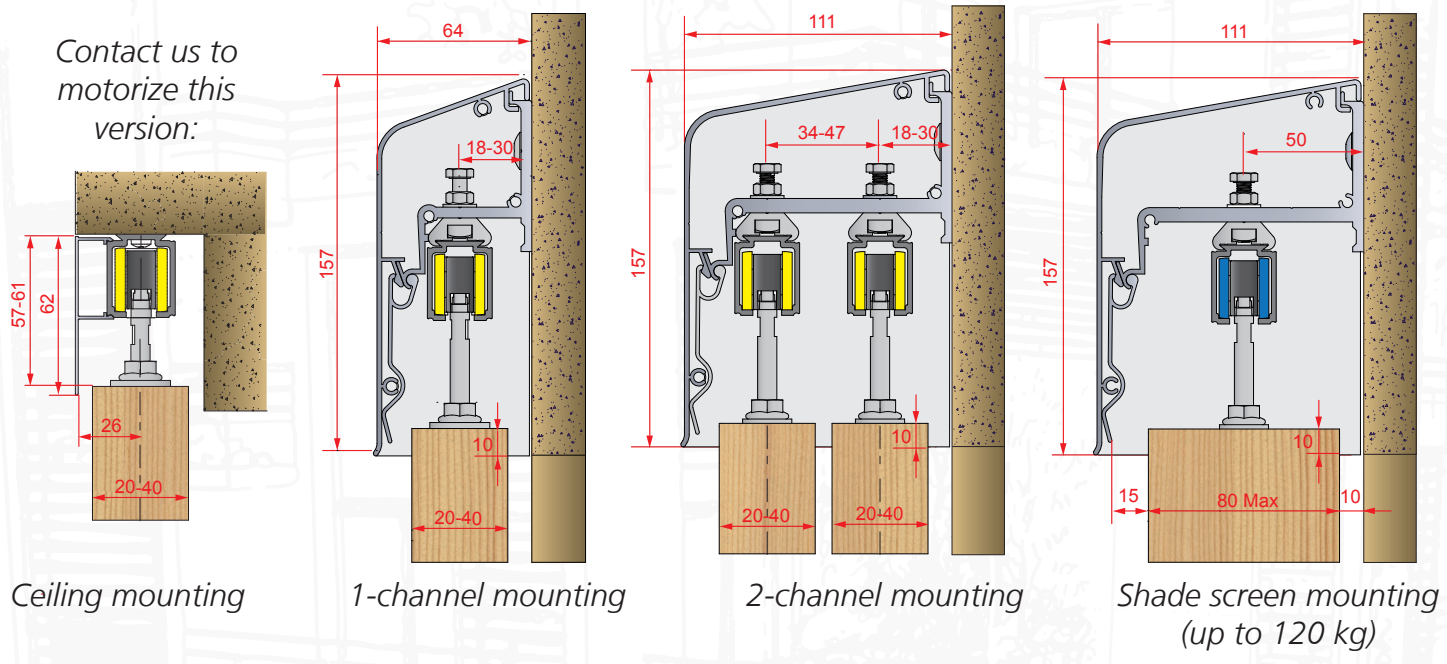


# WIN-SLIDE R

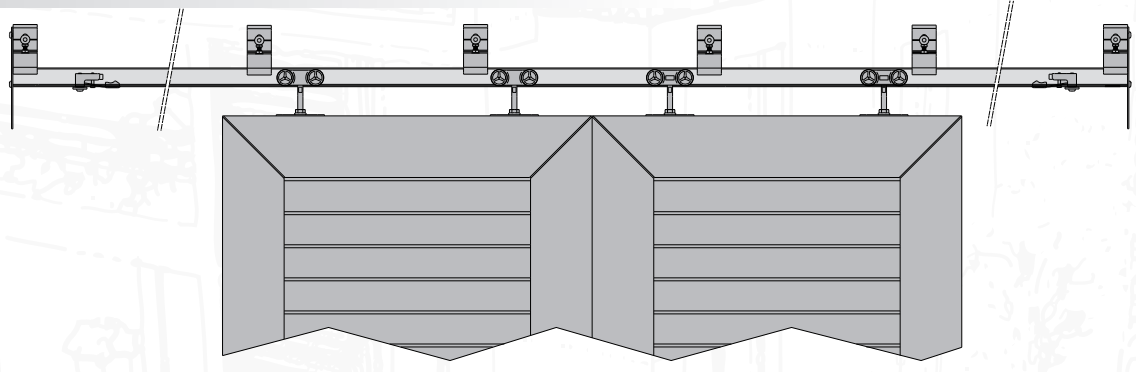


SLIDING

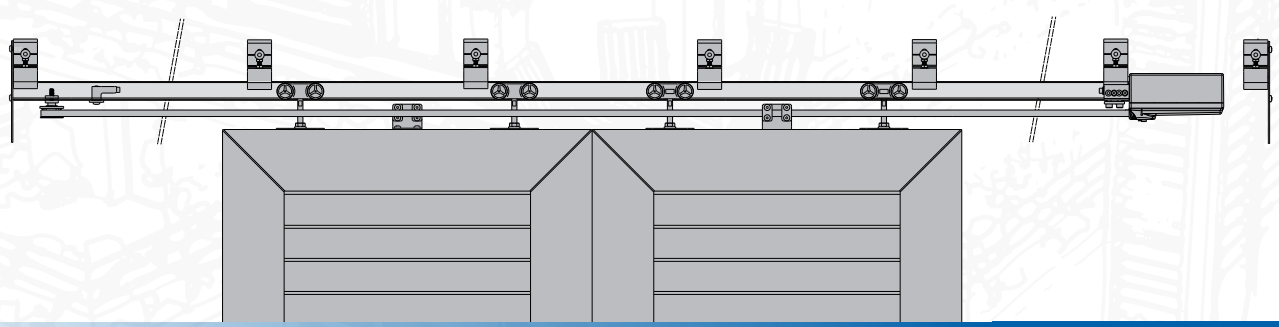
Contact us to motorize this version:



## Hanger example: 2 opposing manually operated shutters



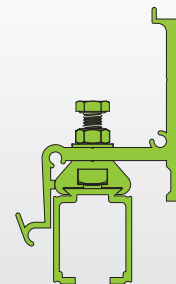
## Hanger example: 2 opposing motorized shutters







# SETS for sliding shutters WIN-SLIDE R



CAPACITY PER PANEL	80 kg
PANEL THICKNESS	20-40 mm, 40-80 mm
PANEL TYPES	bois, aluminium, pvc ...
TRACK	ALUMINIUM
MOVEMENT	DROIT

## SET FOR 1 PANNEL - 80KG FOR OPENING UP TO 860 MM

Item Nr.	Description
WSLIDE-RGV1	Set for pannels up to <b>80 Kg</b> max:
	- 1 track <b>11108</b> L = 2 m. + <b>Buly</b> (spirit level)
	- 2 rollers <b>11218HCX</b> equipped with 4 rollers, pin mounted on ball bearings, M8 stainless steel screw
	- 2 Stainless steel plates <b>0026XA2</b> to be screwed on edge - min. panel 20 mm
	- 2 Stoppers <b>11213XA2</b> with stainless steel screw (adjustable force)
	- 6 Adjustable mounting brackets <b>11113</b> (raw aluminium) <b>80 kg</b> with stainless steel screws and bolts - Vertical adjustment = 10 mm – Horizontal adjustment = 12 mm
	- 3 adjustable guide <b>1128ARG</b> made of white plastic (14 to 30 mm) on electrocoated steel bracket + white polyester paint RAL 9010
	- 1 U-profil <b>1109</b> 25x17 galvanized steel in length of 1.5 m.

### Set WSLIDE-RGV1



## SET FOR 2 PANNELS - 80KG FOR OPENING UP TO 1850 MM

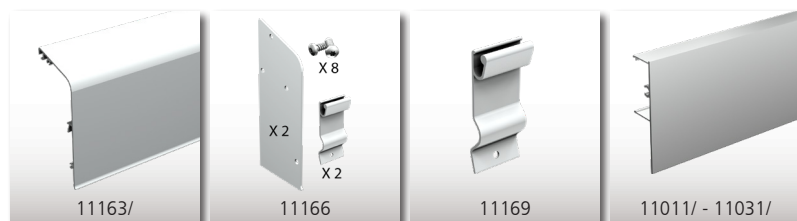
Item Nr.	Description
WSLIDE-RGV2	Set for pannels up to <b>80 Kg</b> max:
	- 2 tracks <b>11108</b> L = 2 m. + <b>Buly</b> (spirit level)
	- 4 rollers <b>11218HCX</b> equipped with 4 rollers, pin mounted on ball bearings, M8 stainless steel screw
	- 4 Stainless steel plates <b>0026XA2</b> to be screwed on edge - min. panel 20 mm
	- 4 Stoppers <b>11213XA2</b> with stainless steel screw (adjustable force)
	- 1 Joining bracket <b>11113M</b> (raw aluminium) (to connect 2 tracks)
	- 10 Adjustable mounting brackets <b>11113</b> (raw aluminium) <b>80 kg</b> with stainless steel screws and bolts - Vertical adjustment = 10 mm – Horizontal adjustment = 12 mm
	- 5 adjustable guide <b>1128ARG</b> made of white plastic (14 to 30 mm) on electrocoated steel bracket + white polyester paint RAL 9010
- 2 U-profil <b>1109</b> 25x17 galvanized steel in length of 1.5 m.	

### Set WSLIDE-RGV2



## OPTION : PELMETS AND END CAPS

<b>11163/</b>	Raw aluminium pelmet* in lengths of 2 / 2.5 / 3 / 4 / 5 or 6 m
<b>11166</b>	Set of end pieces* comprising: - 2 raw aluminium end pieces for pelmet 11163 - 8 stainless steel 4.8x19 screws - 2 raw aluminium clips 11169
<b>11011/</b>	Anodized aluminium pelmet* to be snapped onto track 11108 To be used for ceiling mounting. Height = 63 mm – Length = 2 / 3 or 6 m
<b>11169</b>	Set of 4 aluminium clips* to fasten the pelmet onto the track (required for pelmets more than 3 m long)



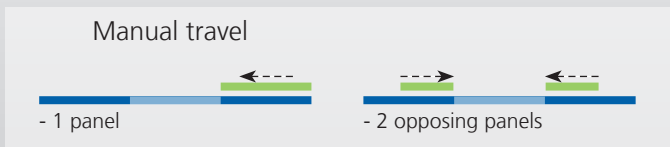
\* Available in RAL colours upon request

Make your life easier by using READY-TO-INSTALL SETS WIN-SLIDE R.

PRACTICAL: complete kits for 1 and 2 leaves:

- 1 panel for openings up to 860 mm
- 2 panels, opposite directions for openings up to 1850 mm

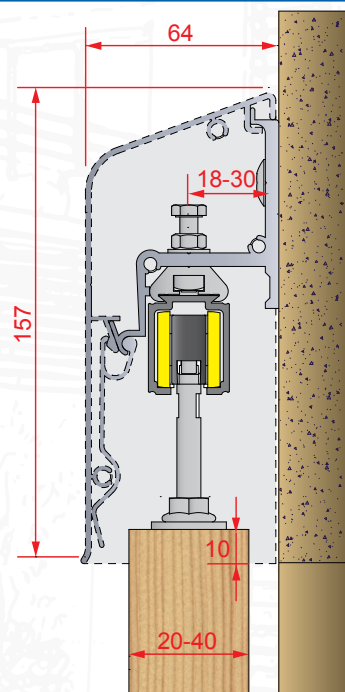
### Possible configurations:



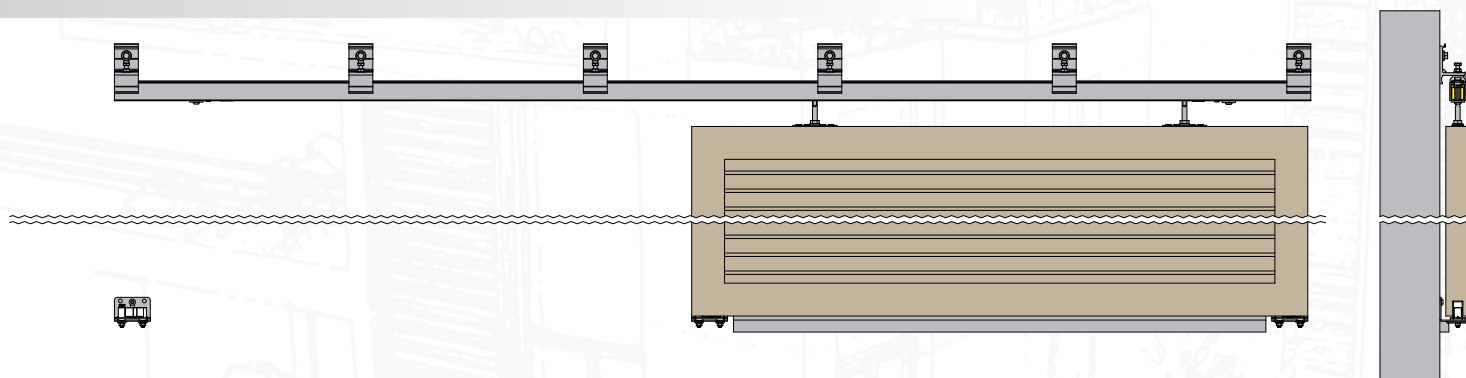
## SETS WIN-SLIDE R



SLIDING



Mounting with **WSLIDE-RGV1**: 1 panel for openings up to 860 mm



Mounting with **WSLIDE-RGV2**: 2 panels, opposite directions for openings up to 1850 mm

