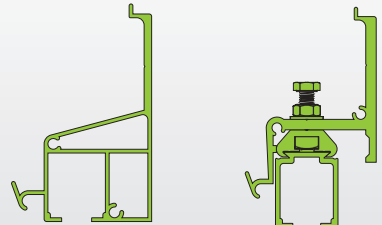




Drive for sliding shutters

SYCOMM

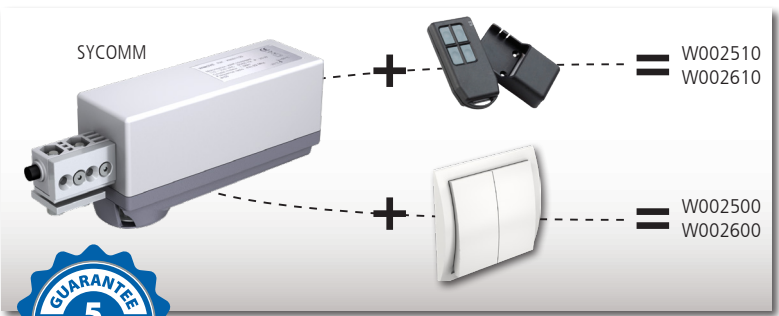
For ranges
WIN-SLIDE
& WIN-SLIDE R



CAPACITY MAXIMUM	80 kg (1 panel)
CAPACITY MAXIMUM	200 kg (4 panels)
PANEL THICKNESS	20-40 mm, 40-80 mm
PANEL TYPES	Wood, aluminium, PVC...
TRACK	ALUMINIUM
MOVEMENT	STRAIGHT

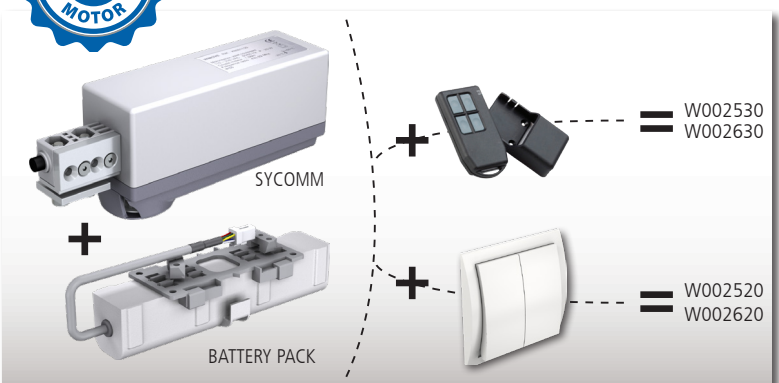
MOTEUR SYCOMM - ALIMENTATION 230 V

Référence	Désignation
W0002510	Sliding shutter motor kit (230V power supply), radio control including: - 1 motor SYCOMM (onboard electronic) <u>with position-holding brake</u> * - 1 wireless remote control C0004770
W0002610	Ditto with SYCOMM motor <u>without position-holding brake</u> **
W0002500	Sliding shutter motor kit (230V power supply), wire control including: - 1 motor SYCOMM (onboard electronic) <u>with position-holding brake</u> * - 1 wired switch C0001050
W0002600	Ditto with SYCOMM motor <u>without position-holding brake</u> **



MOTOR SYCOMM WITH BATTERY PACK 230 V POWER SUPPLY

W0002530	Sliding shutter motor kit (230V power supply), radio control including: - 1 motor SYCOMM (onboard electronic) <u>with position-holding brake</u> * - 1 battery pack - 2 years warranty - 1 cable harness to connect the motor to the battery - 1 wireless remote control C0004770
W0002630	Ditto with SYCOMM motor <u>without position-holding brake</u> **
W0002520	Sliding shutter motor kit (230V power supply), wire control including: - 1 motor SYCOMM (onboard electronic) <u>with position-holding brake</u> * - 1 battery pack - 2 years warranty - 1 cable harness to connect the motor to the battery - 1 wired switch C0001050
W0002620	Ditto with SYCOMM motor <u>without position-holding brake</u> **
K0001170	Spare battery pack (consumable item) useful life of 5 to 7 years - 2-year warranty
C0012620	Wiring extension cord for electric keeper (motor/battery), 2.2 m in length. Possibility to add 2 extensions to the standard kit, giving a total length of 6.6 m.



* SYCOMM with position-holding brake: Keeps shutter in position: Holding force ~30kg

** SYCOMM without position-holding brake: the system is reversible operation possible by applying a force of <5 Kg



Only **SLIDSOFT** calculation software can provide you with the list of components to use according to your configuration: pulley, belt, brackets, etc.



See control accessories on p. 31

LOCKING

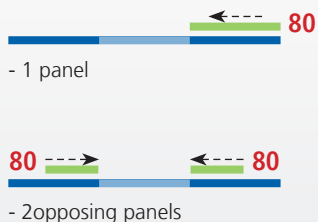
Référence	Désignation
K0001250	Electric keeper kit for SYCOMM motors (connects directly to the motor) including: - 1 electric keeper - 1 wiring kit, 2.5 m in length (to connect to the motor) - 1 locking hook - fastening components
C0012630	Wiring extension cord for electric keeper, 2.5 m in length.

K0001250	
Voltage	12VDC
Power consumption	800mA
Holding force	150 kg
Length of extension cord	2.5 m
Number of extension cords permitted	3

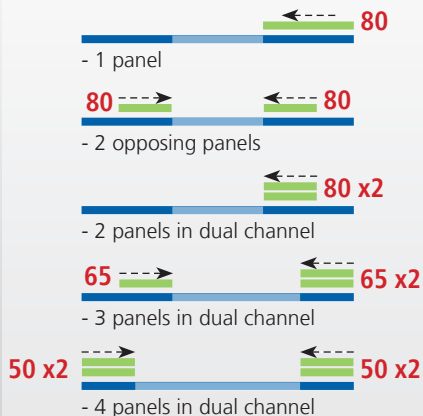


Possible Configurations:

WIN-SLIDE



WIN-SLIDE R



Maximum capacity per panel depending on the configuration

MADE IN FRANCE

SYCOMM



SLIDING

MOTOR SYCOMM

Supply voltage	110-230 V AC - 50/60 Hz
Maximum power rating	25 W
Outer dimensions (l x L x h)	150x50x73 mm
Maximum motor torque	1,5Nm
Protection rating	IP55
Ending position	Smart (Obstacle Stop)
Motor technology	Brushless
Linear speed	~ 60mm/s
Operating temperature	-20 à +60°C
Radio transmitter frequency	433.92 MHz
Standby consumption	<20 mA
Color	Bicolore (RAL 7016 & 7035)
Max. weight	200kg
Max. sliding stroke (1 shutter)	6m
Min. sliding stroke (1 shutter)	30cm
Durability	18000 cycles
Status indicators	Led, Buzzer
Power wire length	3m

BATTERY PACK

Voltage	12 V
Capacity	3000 mA
Type	Lithium - fer - phosphate Life PO4

GENERAL DATA:

Each panel must be guided at the lower end in addition to the upper sliding link.

Soft start and stop – Obstacle detection

Complies with CE requirements as per:

EN60335-1:2013 ; EN60335-2-103:2004+A11:2009 ; NFP26341
EN61000-6-1:2007 ; EN61000-6-2:2006 ; EN61000-6-3:2007 ;
EN61000-6-4:2007 ; NF 26-341

Complies with the following directives:

2006/95/CE ; 2006/42/CE ; 2004/108/CE ; 1999/5/CE ; 2002/95/CE

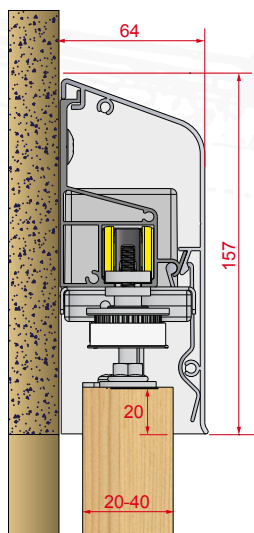
NB: All the data in the table are for reference only. They depend on the specific conditions and do not constitute a commitment of Manton. Motorization designed for a domestic use and an installation under pelmet.

SLIDSOFT®: calculation software www.manton.com

SlidSoft
match up your projects

ELECTRIC KEEPER for motors SYCOMM

Holding force 150 Kg



MADE IN FRANCE

Plug&Play: no settings!
The SYCOMM motor manages automatically the locking function

