

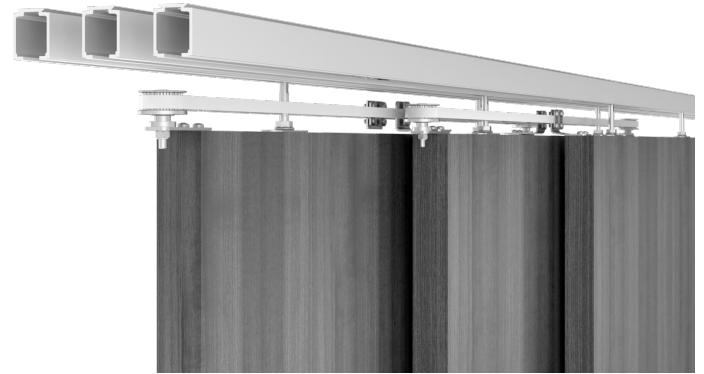


INSTRUCTION DE MONTAGE
MONTAGEANLEITUNG
INSTRUCTIONS FOR ASSEMBLY
INSTRUCCIONES DE MONTAJE

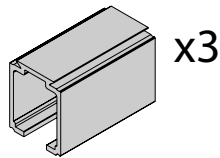
SAF-TELESCOPIC

NM_SAFTL_006

Poids maximal des panneaux Maximales Gewicht Maximum weight Peso máximo	120 KG 265 lbs.
Epaisseur des panneaux Ladendicke Shutter thickness Espesor de las contraventanas	45 mm 1 ³ / ₄ "
Largeur maximale des panneaux Maximale Flügelbreite Maximum panel width Ancho máximo de panel	700 - 1500 mm 27 " - 59 "

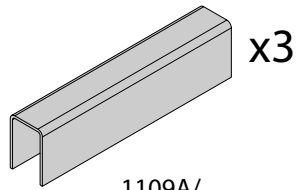


COMPOSITION - ZUSAMMENSETZUNG - COMPOSICIÓN



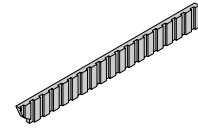
11312/...

x3



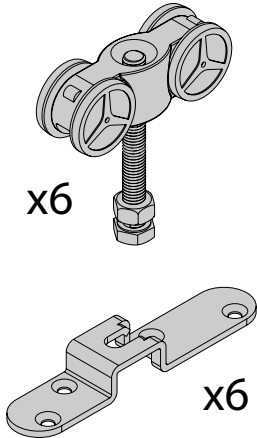
1109A/...

x3

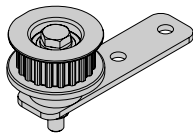


10172/...

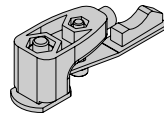
SAF121-TL3



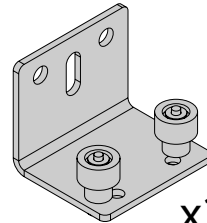
x6



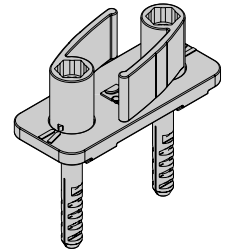
x4



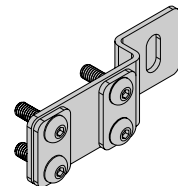
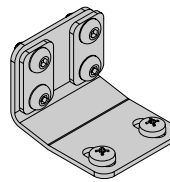
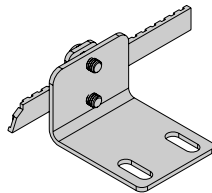
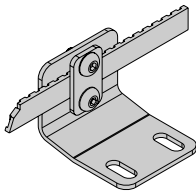
x2



x2



10190S23



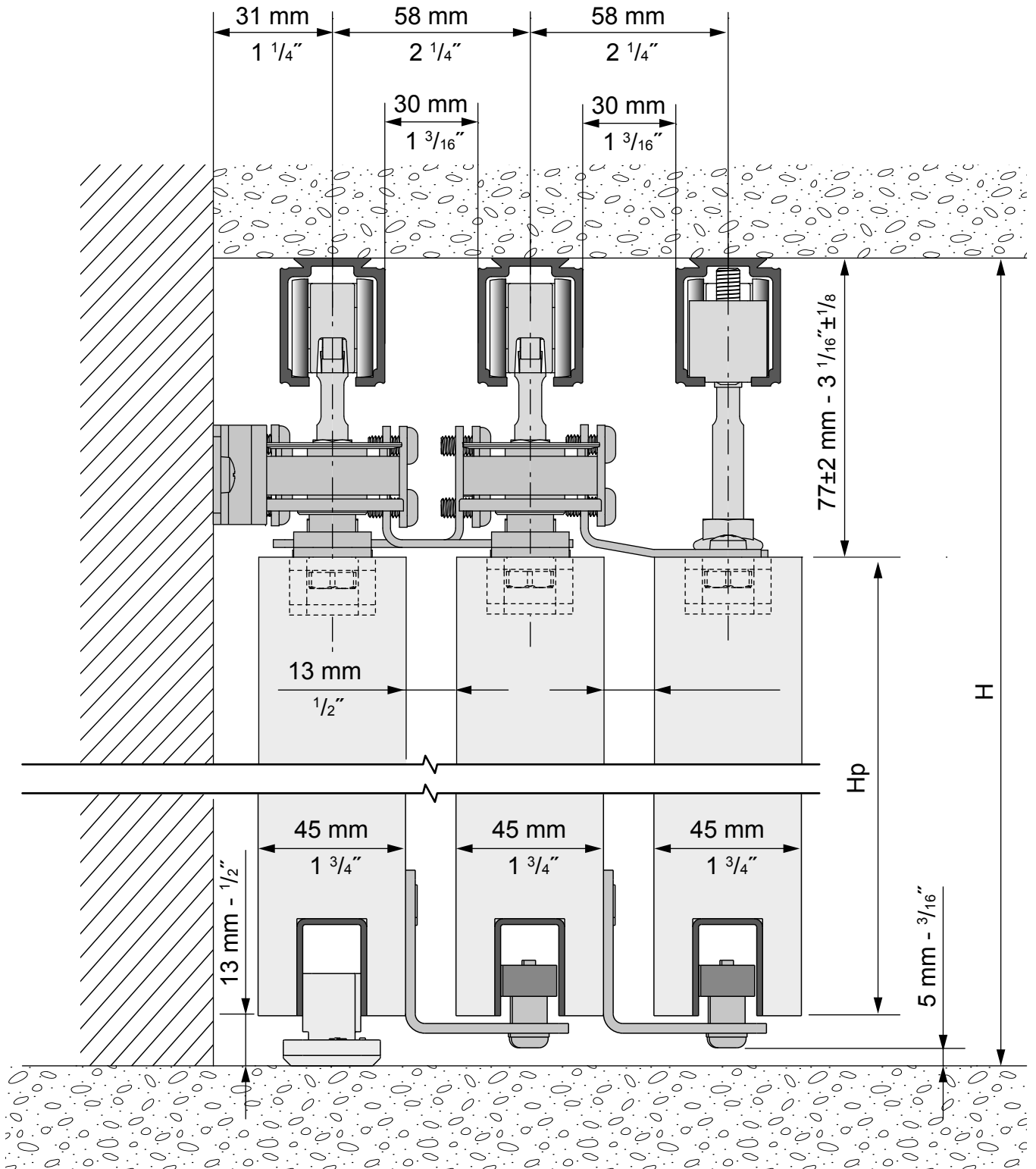
CONDITIONS DE POSE / MONTAGEBEDINGUNGEN / INSTALLATION REQUIREMENTS / CONDICIONES DE COLOCACION:

- Produit destiné à une utilisation en intérieur / Dieses Produkt ist nur für Innenanwendung geeignet / For indoor use only / Producto para utilización en interior
- Ne pas installer dans des endroits humides / Nicht in feuchten Atmosphären verwenden / Do not install in humid places / No instalar en lugares húmedos
- Le montage doit être effectué par des monteurs qualifiés / Die Montage muss von qualifizierten Handwerkern geführt werden / Instalation must be performed by skilled personnel / el montaje tiene que hacerse por instaladores cualificados

DIMENSIONS / MASSE / SIZING / DIMENSIONES (mm):

- Epaisseur panneau / Paneelstärke / Panel thickness / Grueso del panel: **45 mm**
- Poids panneau / Paneelgewicht / Panel weight / Peso panel: **120 Kg MAX**

45 mm - 1 3/4"



H = Hauteur de baie
 Opening height
 Öffnungshöhe
 Altura de luz

H_p = Hauteur panneaux
 Door height
 Schiebetürhöhe
 Altura de panel

$$H_p = H - 90 \text{ mm} = \text{_____ mm}$$

$$H_p = H - 3 \frac{1}{2} \text{ " } = \text{_____ "}$$

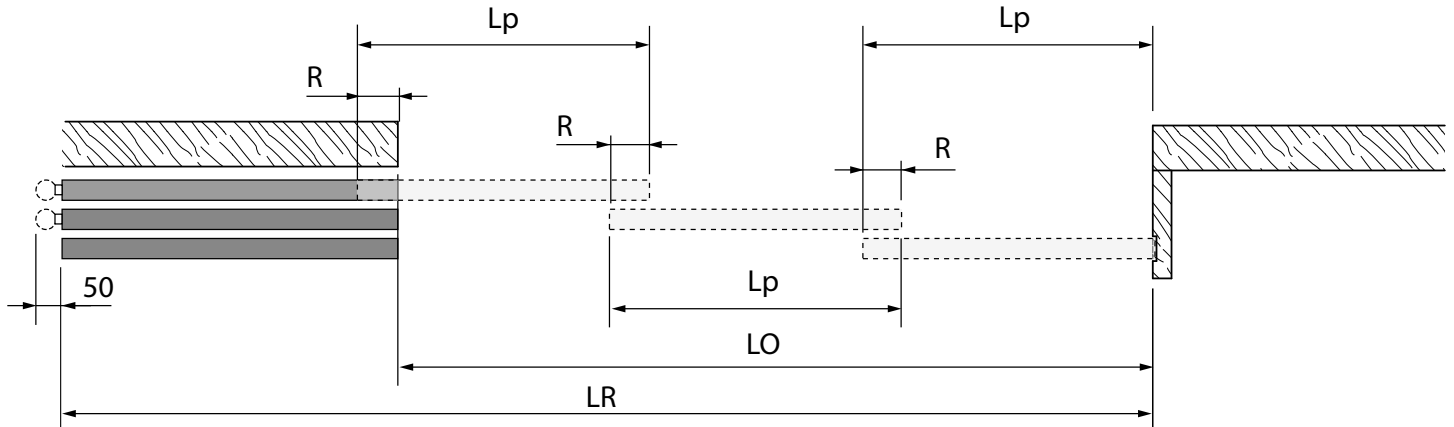
PLANIFICATION - PLANUNG - PLANNING - PLANIFICACIÓN



$$R = 90 \text{ mm} \quad L_p = \frac{(3 \times R) + LO}{3} = \text{_____ mm}$$

$$3 \frac{1}{2}'' \quad LR = LO + L_p = \text{_____ mm}$$

$700 \leq L_p \leq 1500$
 $27'' \leq L_p \leq 59''$
 $LR \leq 6000$
 $LR \leq 235''$



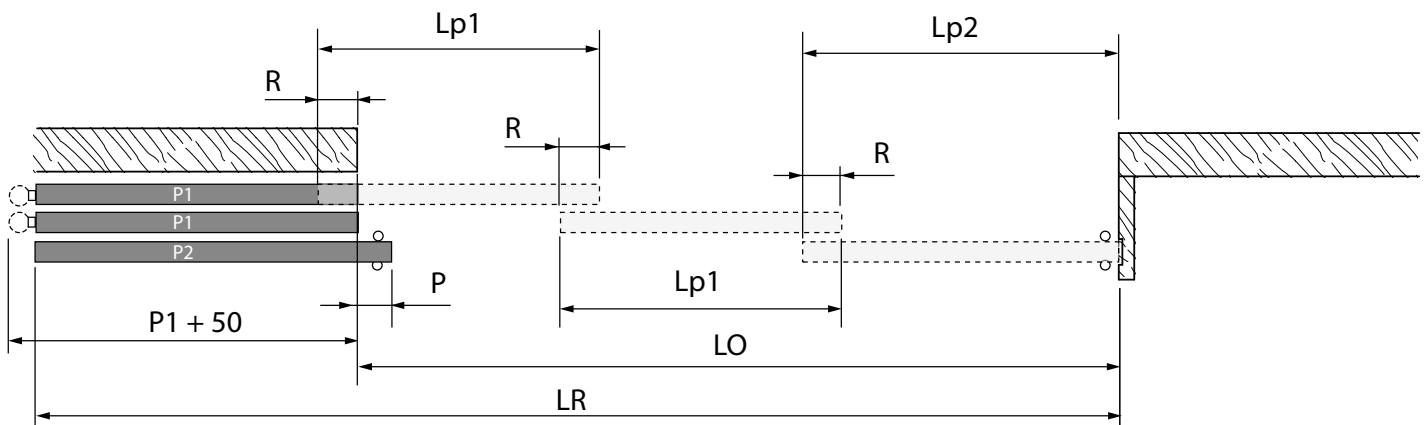
$$R = 90 \text{ mm} \quad L_{p1} = \frac{(3 \times R) + (LO - P)}{3} = \text{_____ mm}$$

$$3 \frac{1}{2}'' \quad L_{p2} = L_{p1} + P = \text{_____ mm}$$

$$P = 90 \text{ mm} \quad LR = LO + L_{p1} = \text{_____ mm}$$

$$3 \frac{1}{2}''$$

$700 \leq L_{p1} \leq 1500$
 $27'' \leq L_{p1} \leq 59''$
 $LR \leq 3000$
 $LR \leq 235''$



LO = Largeur de baie
Opening width
Öffnungsbreite
Ancho de luz

Lp = Largeur panneaux
Door width
Schiebetürbreite
Ancho de panel

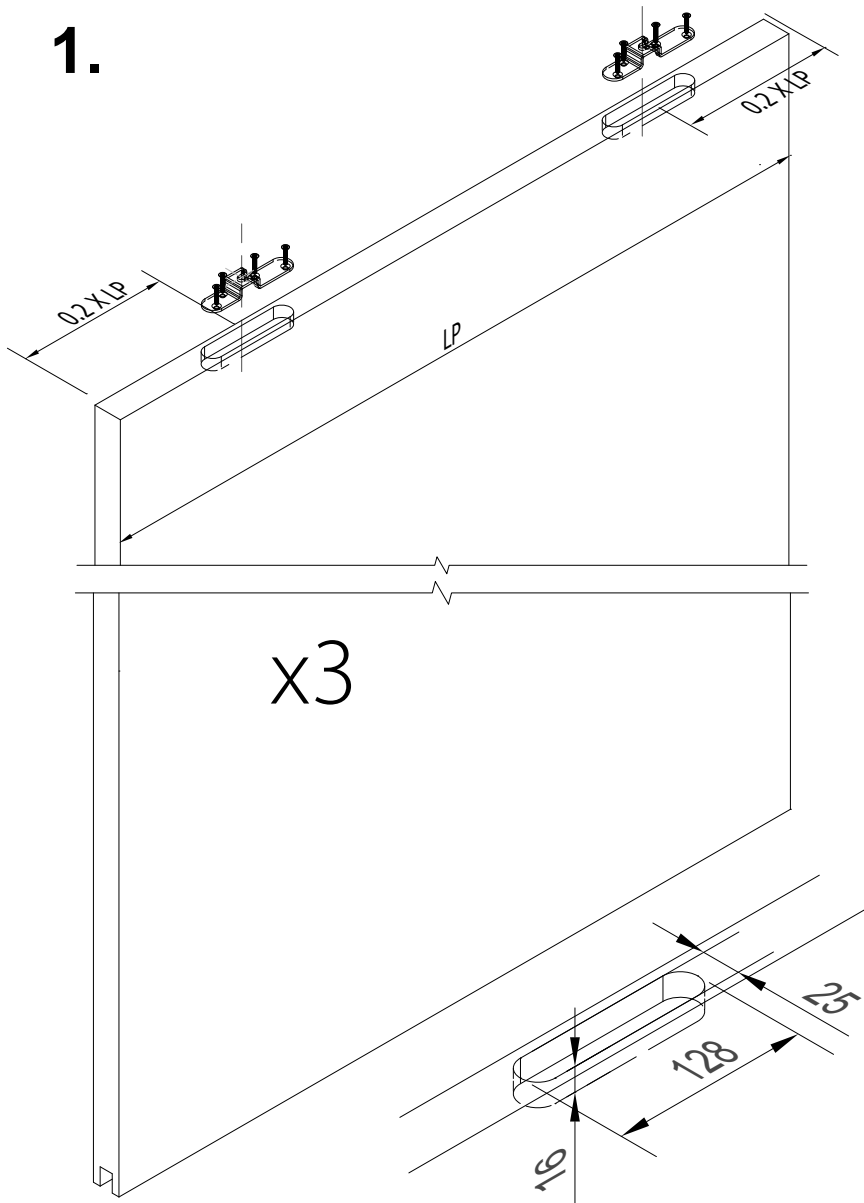
LR = Longueur de rails
Length of tracks
Länge von Laufshienen
Longitud de los perfiles

R = Recouvrement
Door overlap
Türübershneidung
Recubrimiento

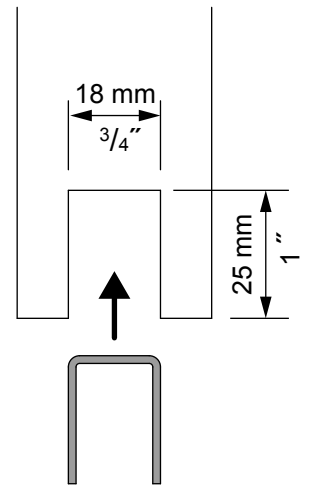
P = Poignée baton
Sliding door handle
Schiebetürgriffe
Tirador

PRÉPARATION DES PANNEAUX - PANELS PREPARATION
 VORBEREITUNG DER FLÜGEL - PREPARACIÓN DE LAS HOJAS

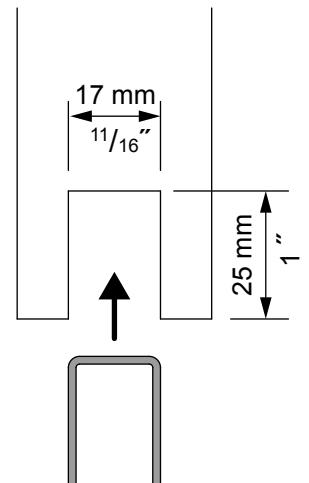
1.



1109 A

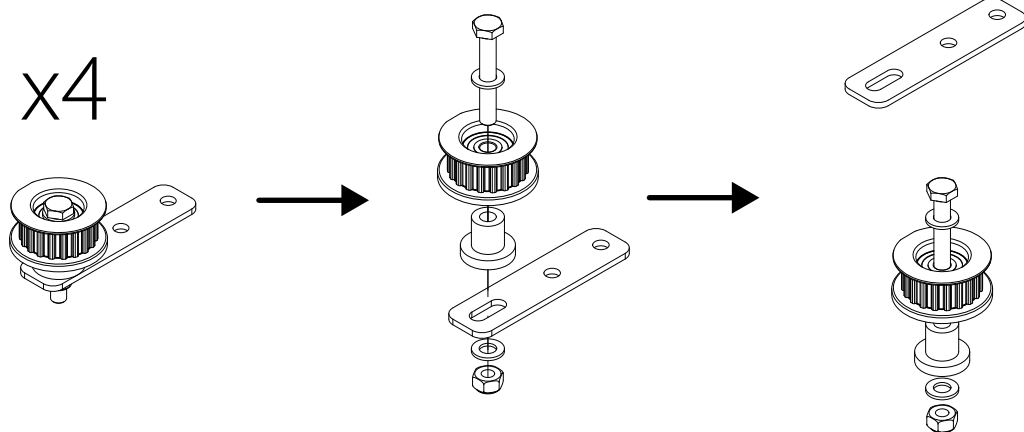


1109



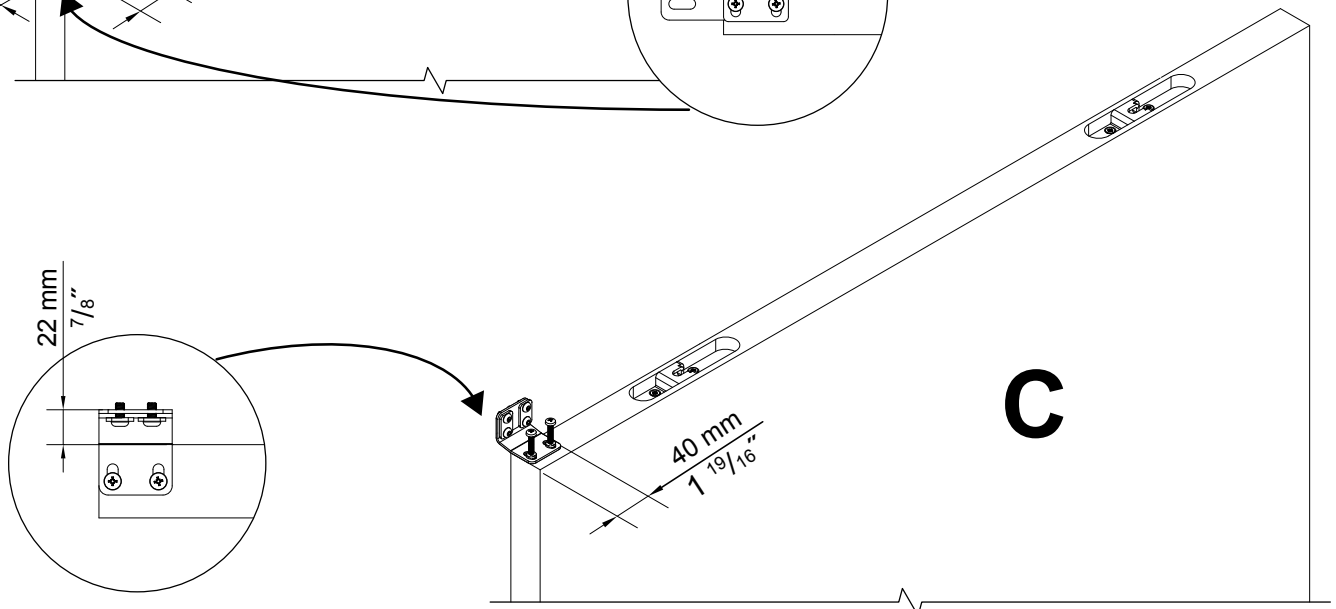
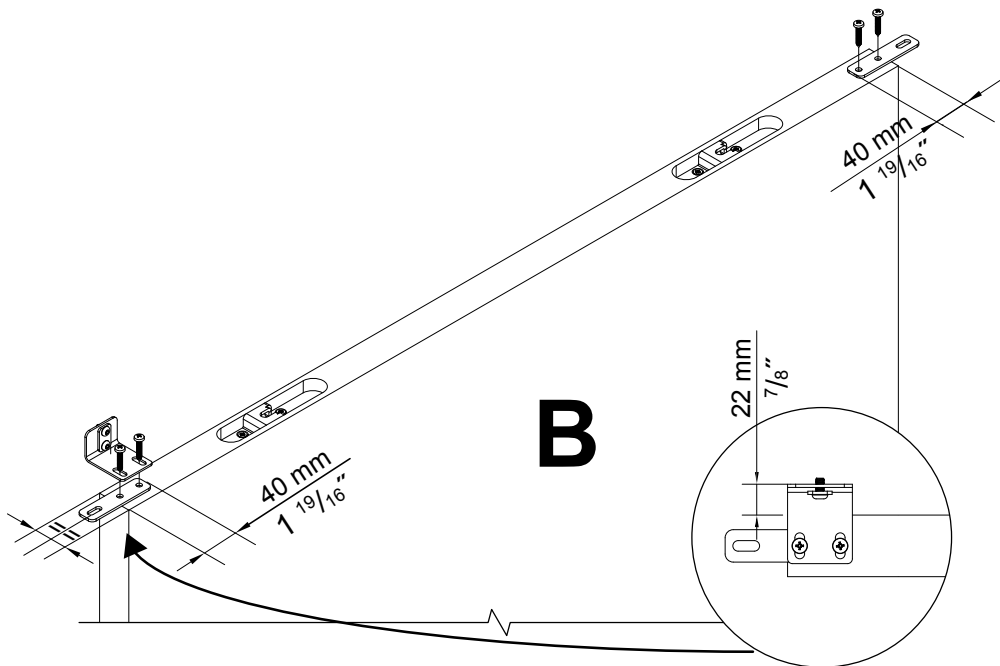
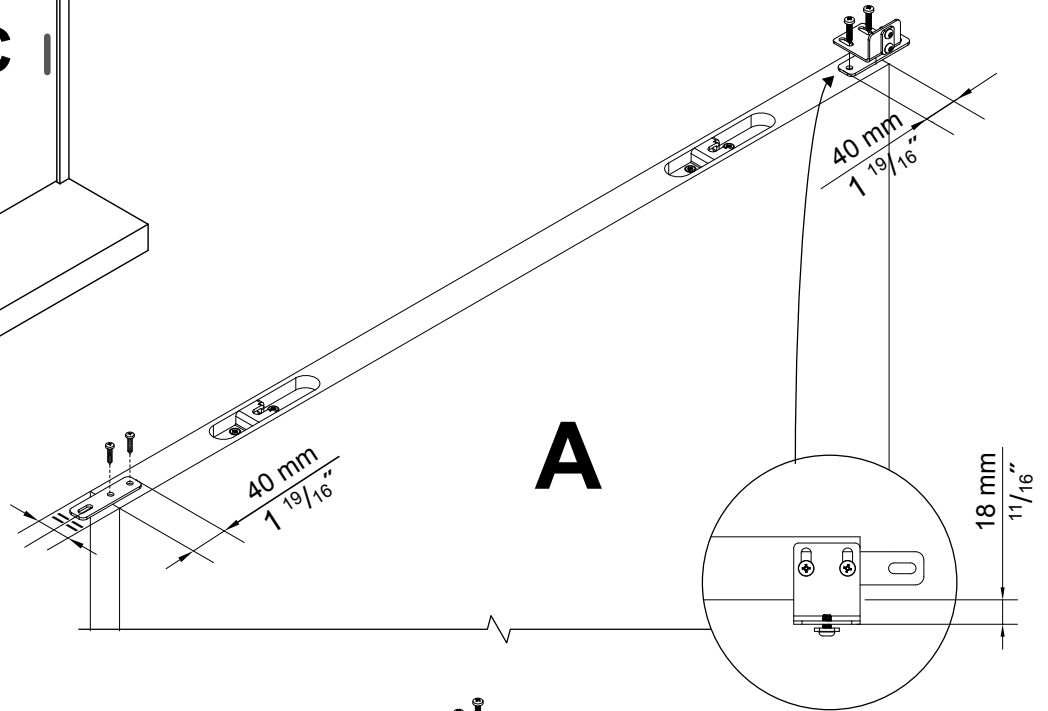
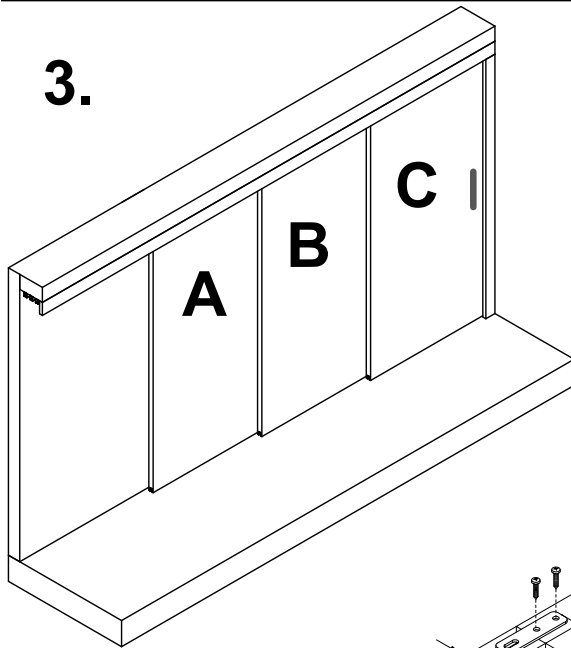
2.

x4

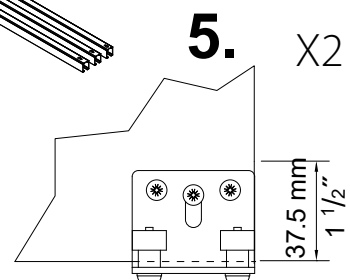
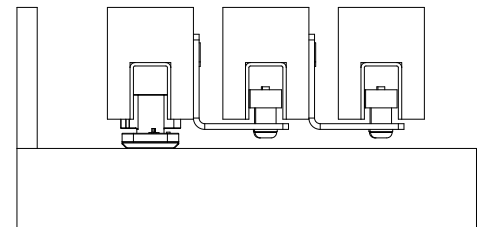
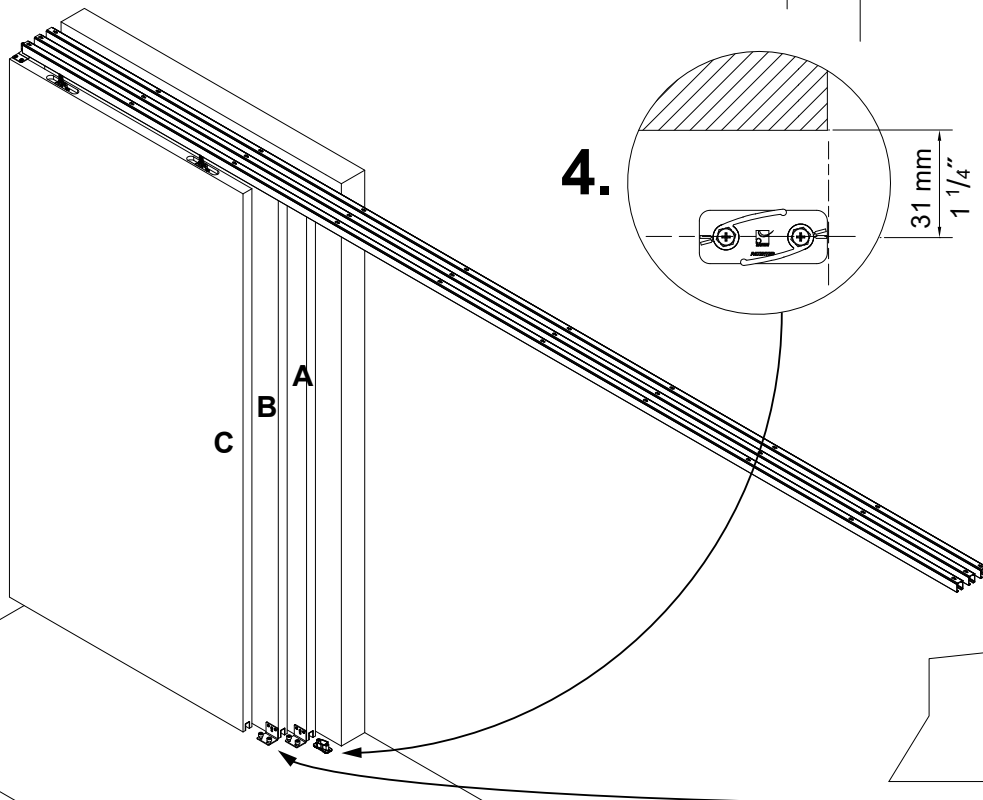
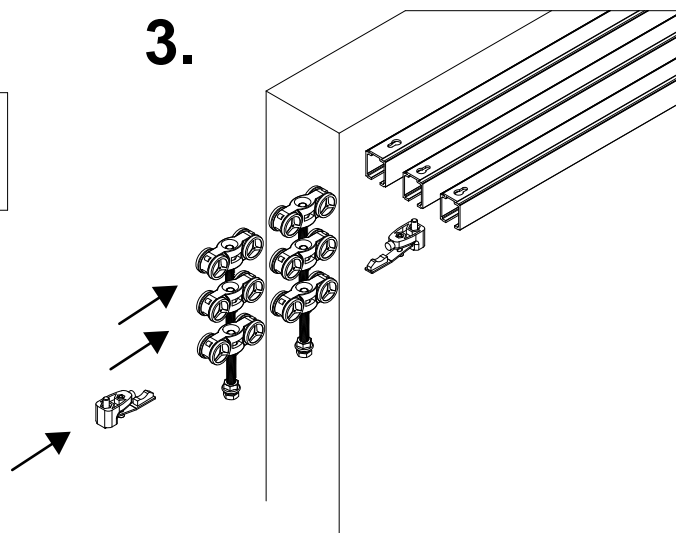
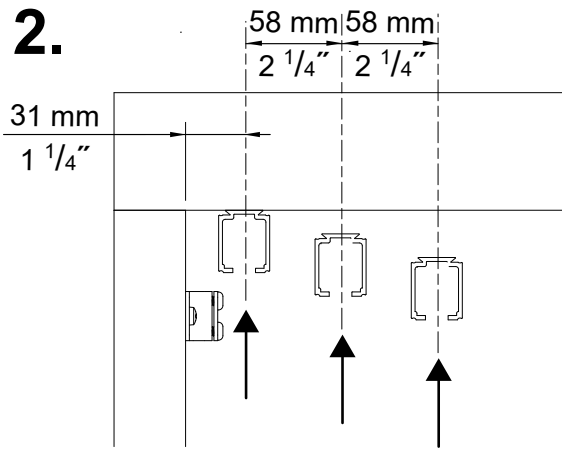
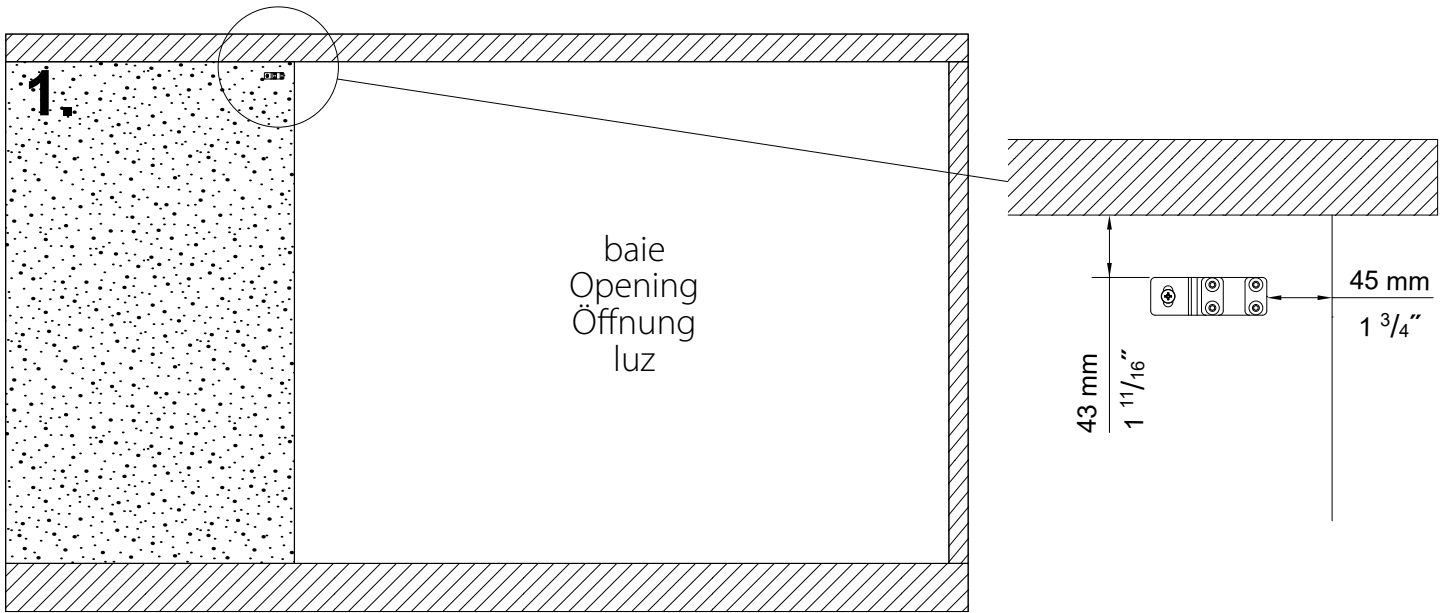


PRÉPARATION DES PANNEAUX - PANELS PREPARATION
 VORBEREITUNG DER FLÜGEL - PREPARACIÓN DE LAS HOJAS

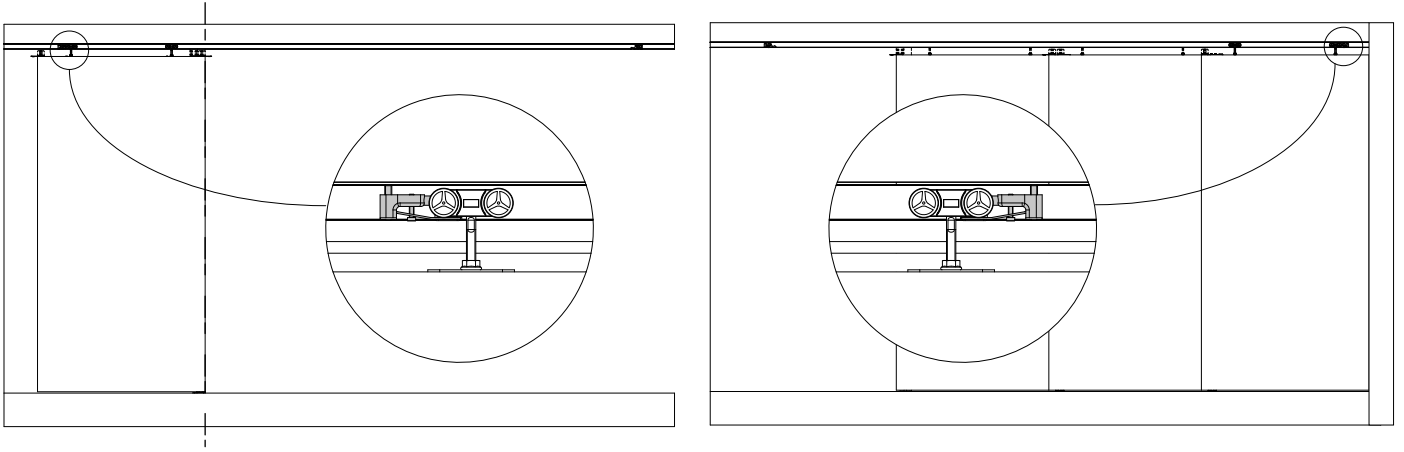
3.



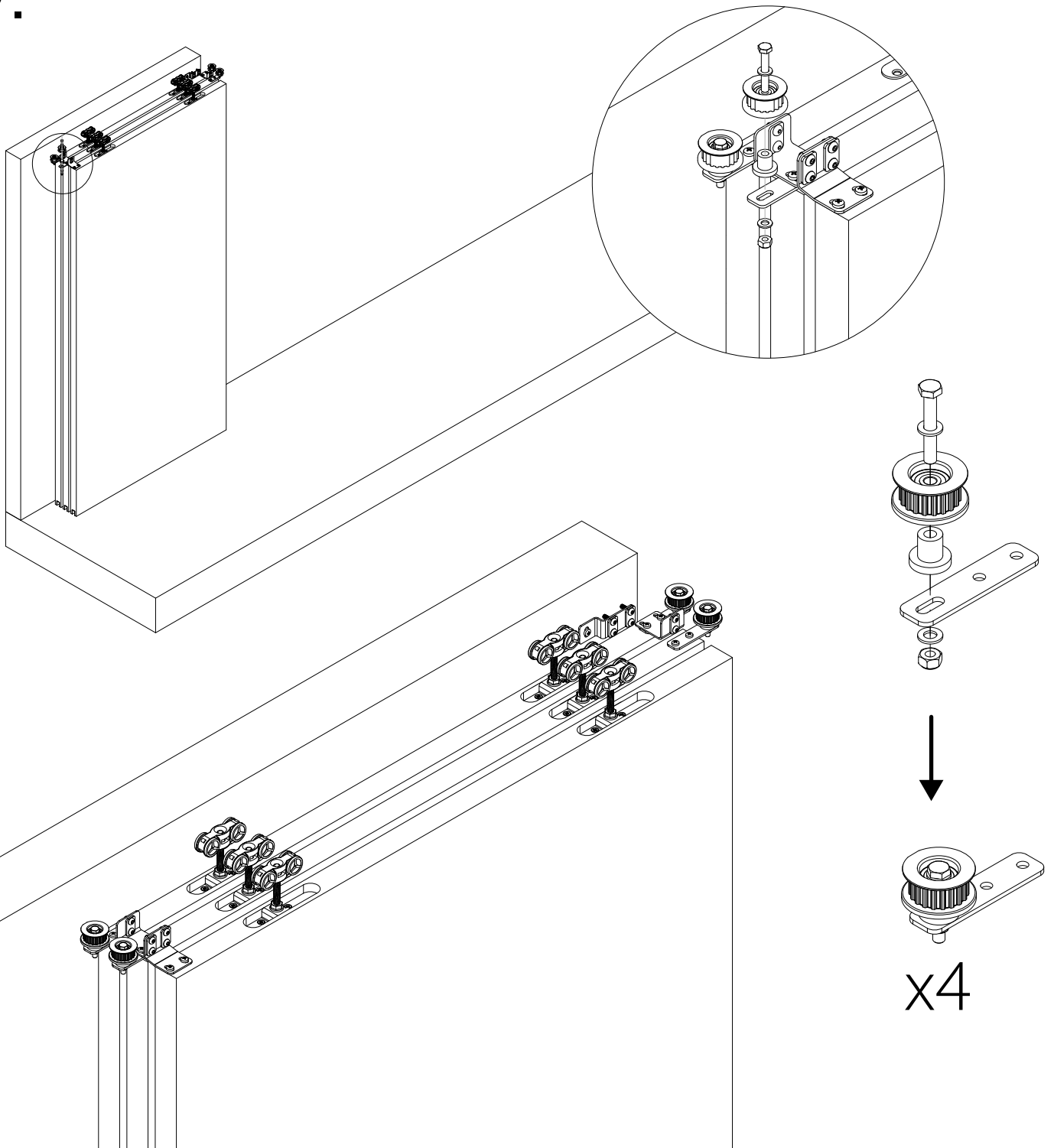
MONTAGE - INSTALLATION - MONTAJE



6.



7.



8.

