

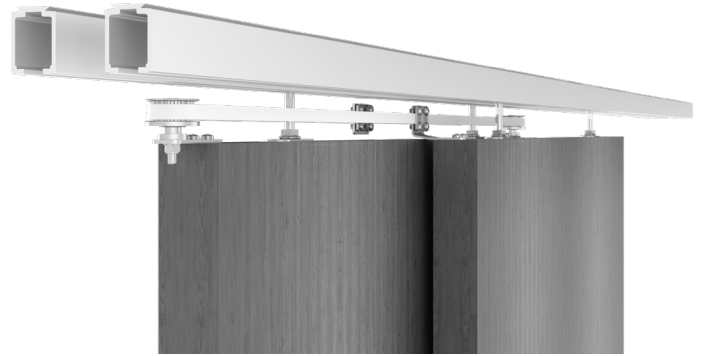


INSTRUCTION DE MONTAGE  
MONTAGEANLEITUNG  
INSTRUCTIONS FOR ASSEMBLY  
INSTRUCCIONES DE MONTAJE

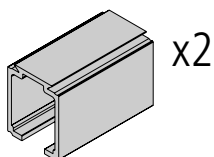
# SAF-TELESCOPIC

## NM\_SAFTL\_002

Poids maximal des panneaux Maximales Gewicht Maximum weight Peso máximo	120 KG 265 lbs.
Epaisseur des panneaux Ladendicke Shutter thickness Espesor de las contraventanas	45 mm 1 <sup>3</sup> / <sub>4</sub> "
Largeur maximale des panneaux Maximale Flügelbreite Maximum panel width Ancho máximo de panel	700 - 1500 mm 27" - 59"

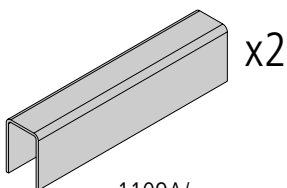


# COMPOSITION - ZUSAMMENSETZUNG - COMPOSICIÓN



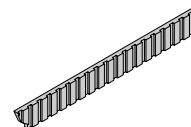
11312/...

x2



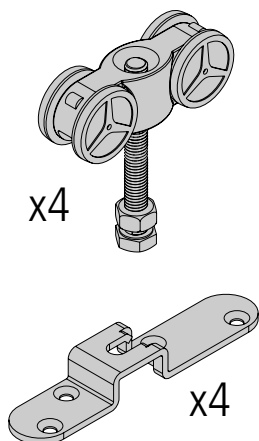
1109A/...

x2

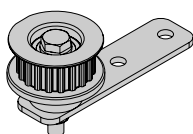


10172/...

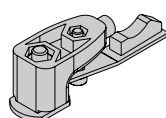
SAF121-TL2



x4



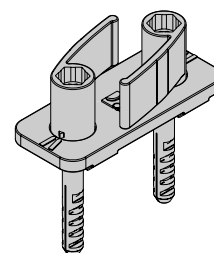
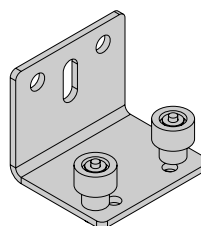
x2



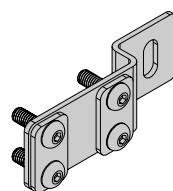
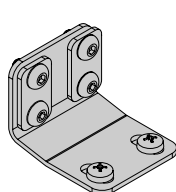
x2

x4

1102TL2



10190S22



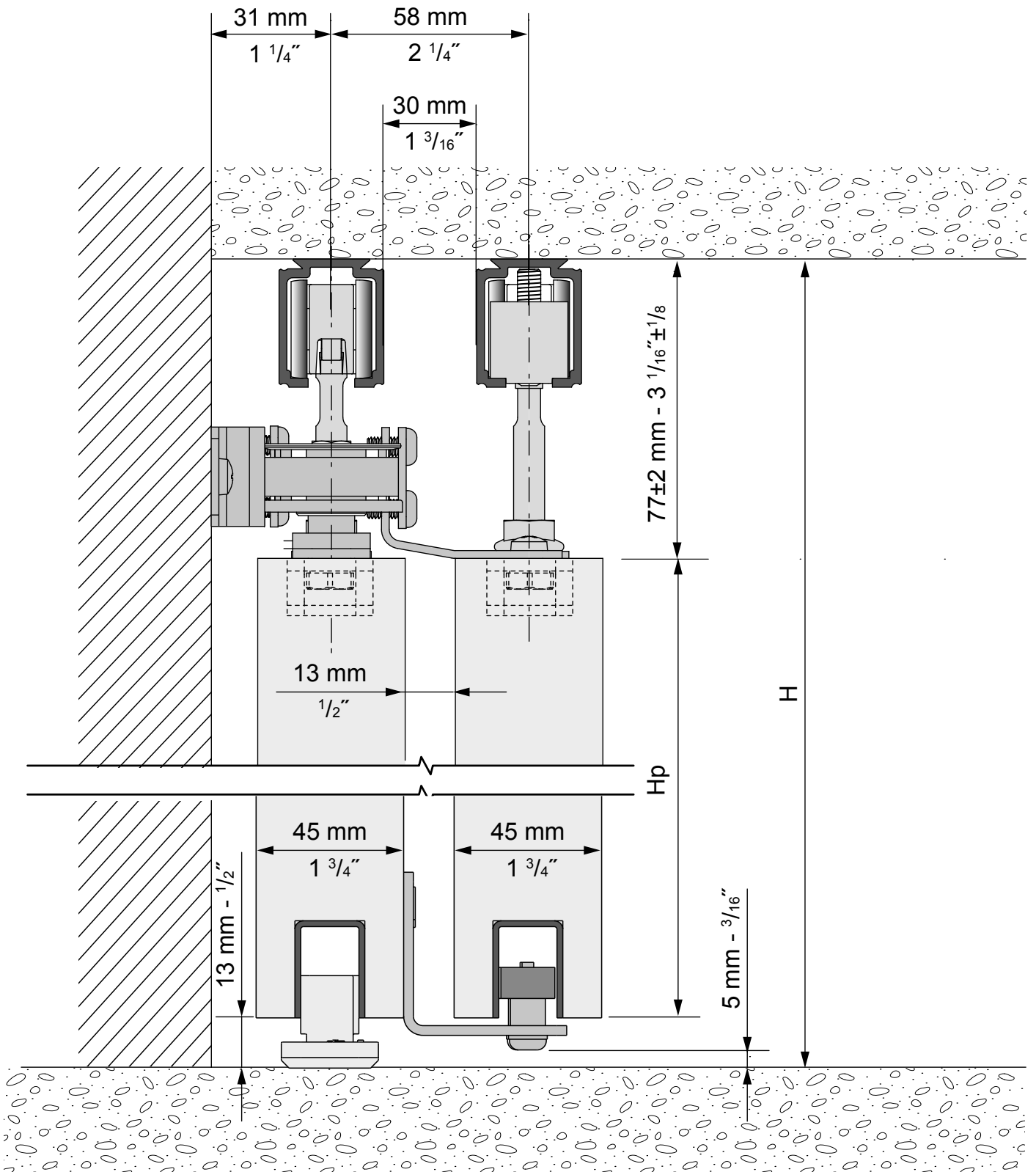
## CONDITIONS DE POSE / MONTAGEBEDINGUNGEN / INSTALLATION REQUIREMENTS / CONDICIONES DE COLOCACION:

- Produit destiné à une utilisation en intérieur / Dieses Produkt ist nur für Innenanwendung geeignet / For indoor use only / Producto para utilización en interior
- Ne pas installer dans des endroits humides / Nicht in feuchten Atmosphären verwenden / Do not install in humid places / No instalar en lugares húmedos
- Le montage doit être effectué par des monteurs qualifiés / Die Montage muss von qualifizierten Handwerkern geführt werden / Installation must be performed by skilled personnel / el montaje tiene que hacerse por instaladores cualificados

## DIMENSIONS / MASSE / SIZING / DIMENSIONES (mm):

- Epaisseur panneau / Paneelstärke / Panel thickness / Grueso del panel: **45 mm**
- Poids panneau / Paneelgewicht / Panel weight / Peso panel: **120 Kg MAX**

# 45 mm - 1 3/4"



H = Hauteur de baie  
 Opening height  
 Öffnungshöhe  
 Altura de luz

Hp = Hauteur panneaux  
 Door height  
 Schiebetürhöhe  
 Altura de panel

$$H_p = H - 90 \text{ mm} = \text{_____ mm}$$

$$H_p = H - 3 \frac{1}{2} \text{ ''} = \text{_____ ''}$$

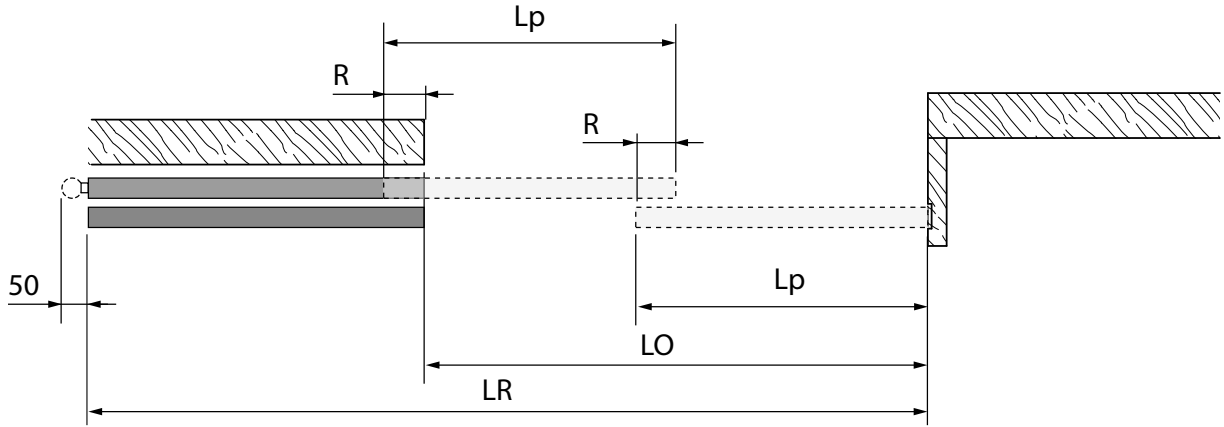
# PLANIFICATION - PLANUNG - PLANNING - PLANIFICACIÓN



$$R = 90 \text{ mm} \quad L_p = \frac{(2 \times R) + LO}{2} = \text{_____ mm}$$

$$3 \frac{1}{2}'' \quad LR = LO + L_p = \text{_____ mm}$$

700 ≤ Lp ≤ 1500  
27" ≤ Lp ≤ 59"  
LR ≤ 3000  
LR ≤ 118"



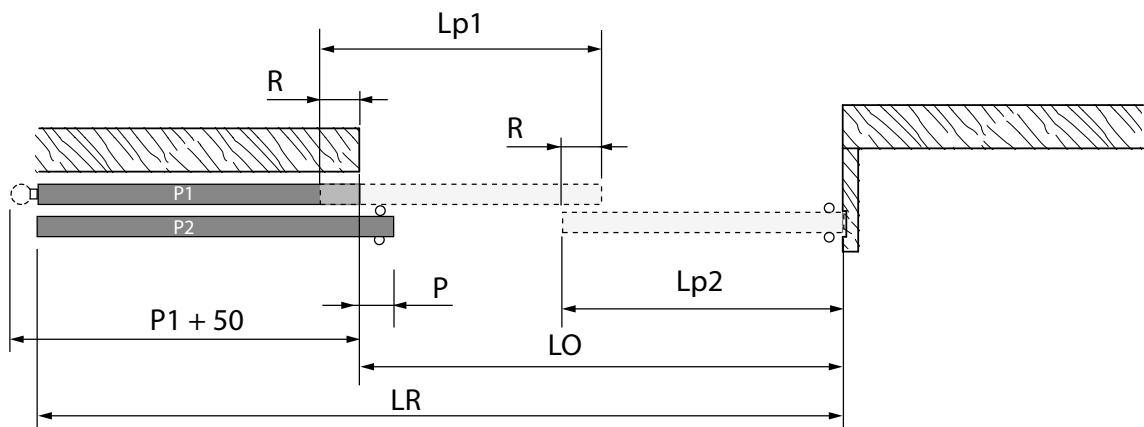
$$R = 90 \text{ mm} \quad L_{p1} = \frac{(2 \times R) + (LO - P)}{2} = \text{_____ mm}$$

$$3 \frac{1}{2}'' \quad L_{p2} = L_{p1} + P = \text{_____ mm}$$

$$P = 90 \text{ mm} \quad LR = LO + L_{p1} = \text{_____ mm}$$

$$3 \frac{1}{2}''$$

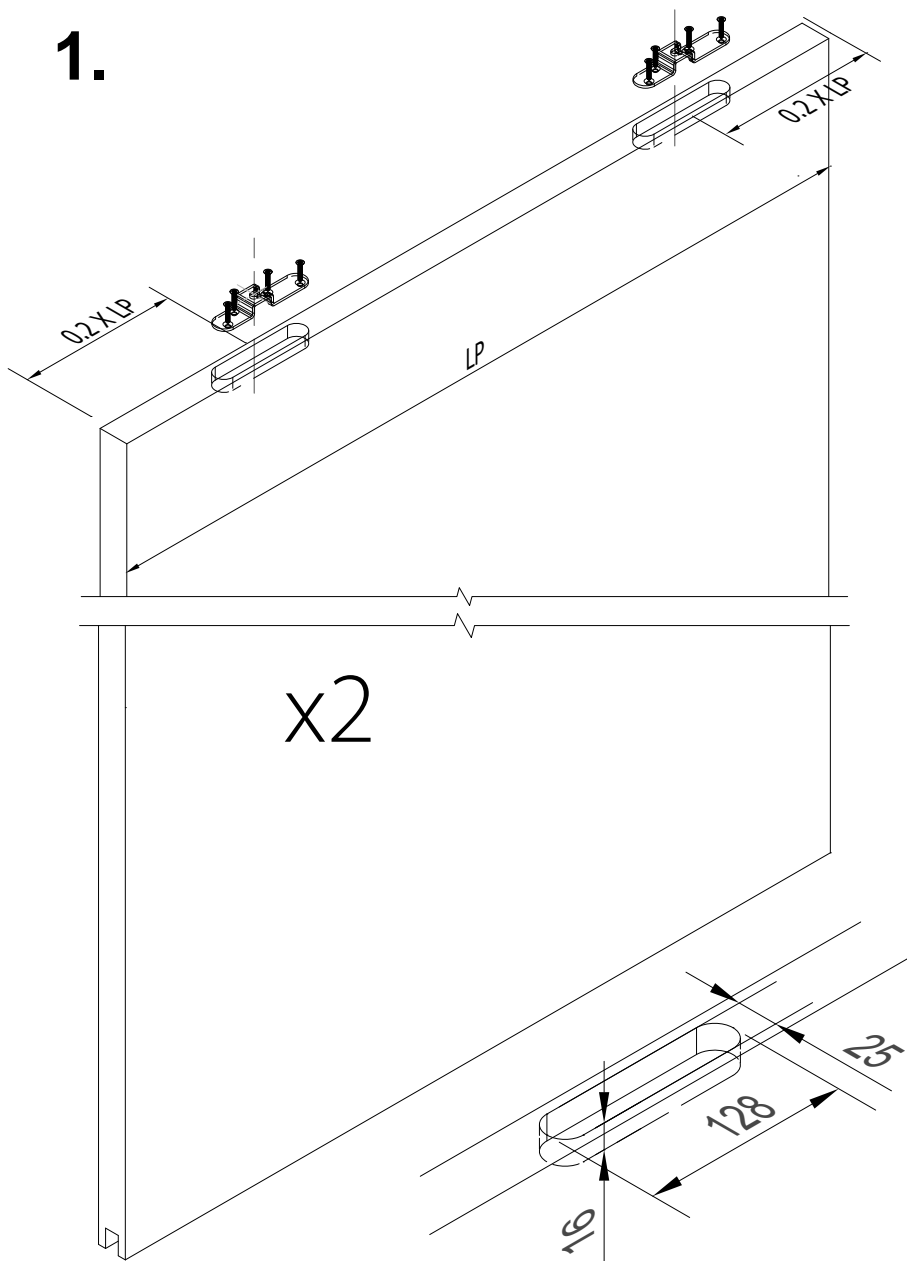
700 ≤ Lp1 ≤ 1500  
27" ≤ Lp1 ≤ 59"  
LR ≤ 3000  
LR ≤ 118"



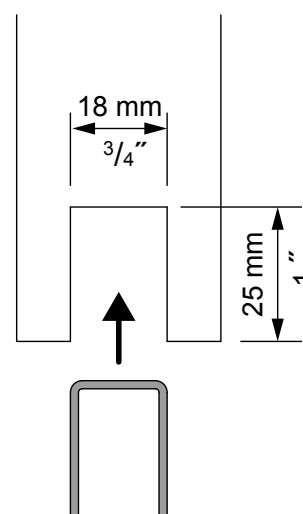
- LO** = Largeur de baie / Opening width / Öffnungsbreite / Ancho de luz
- Lp** = Largeur panneaux / Door width / Schiebetürbreite / Ancho de panel
- LR** = Longueur de rails / Length of tracks / Länge von Laufshienen / Longitud de los perfiles
- R** = Recouvrement / Door overlap / Türübershneidung / Recubrimiento
- P** = Poignée baton / Sliding door handle / Schiebetürgriffe / Tirador

**PRÉPARATION DES PANNEAUX - PANELS PREPARATION  
VORBEREITUNG DER FLÜGEL - PREPARACIÓN DE LAS HOJAS**

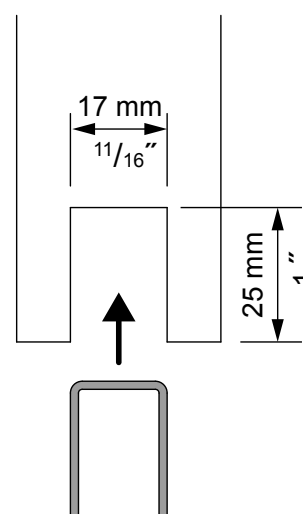
**1.**



**1109 A**

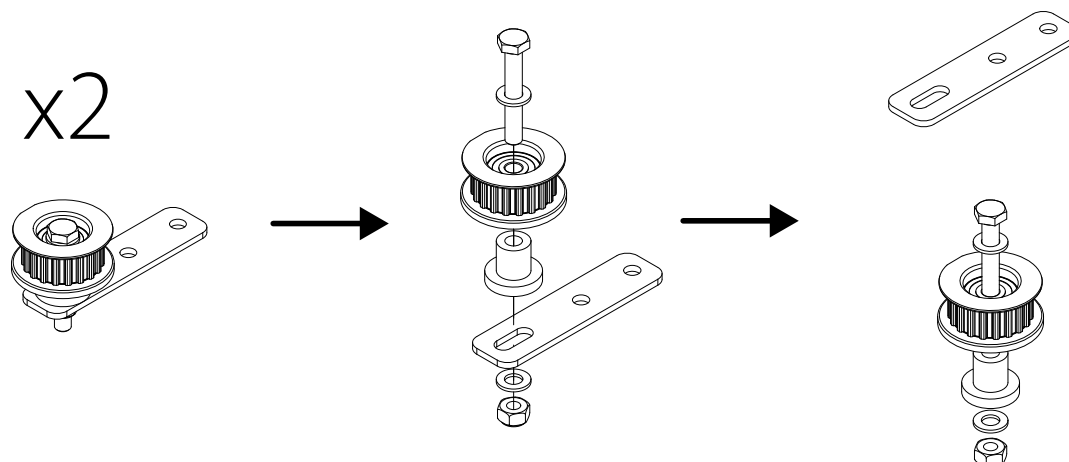


**1109**



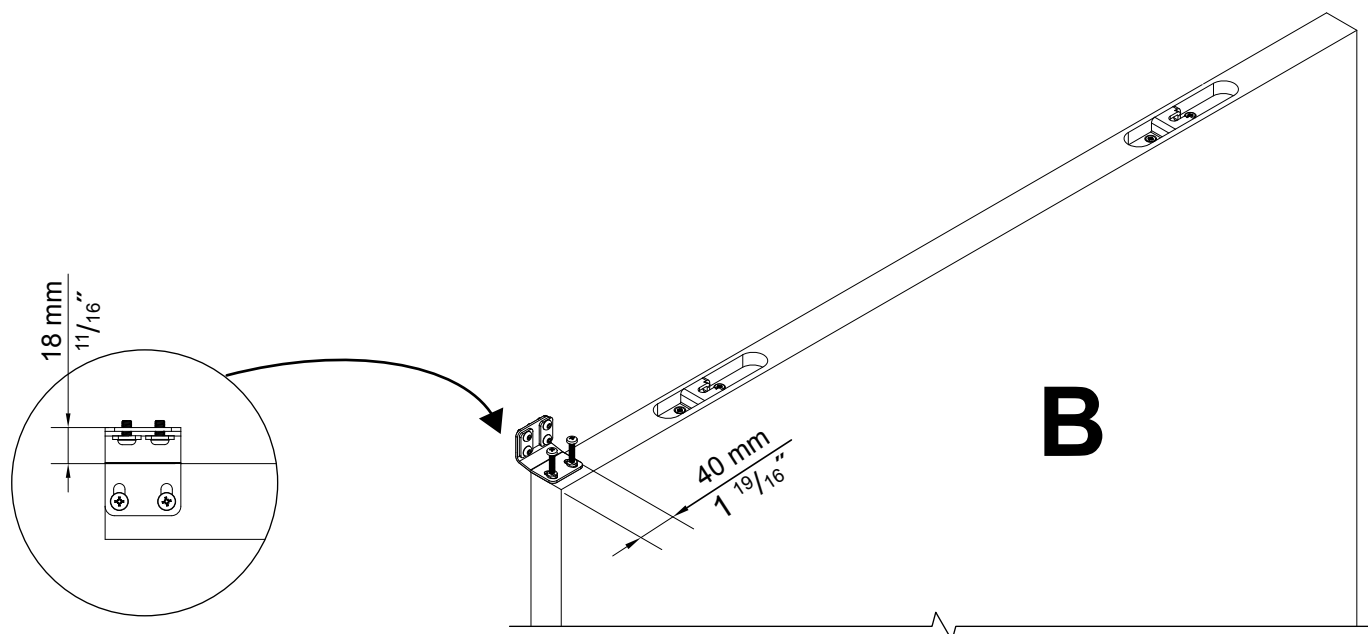
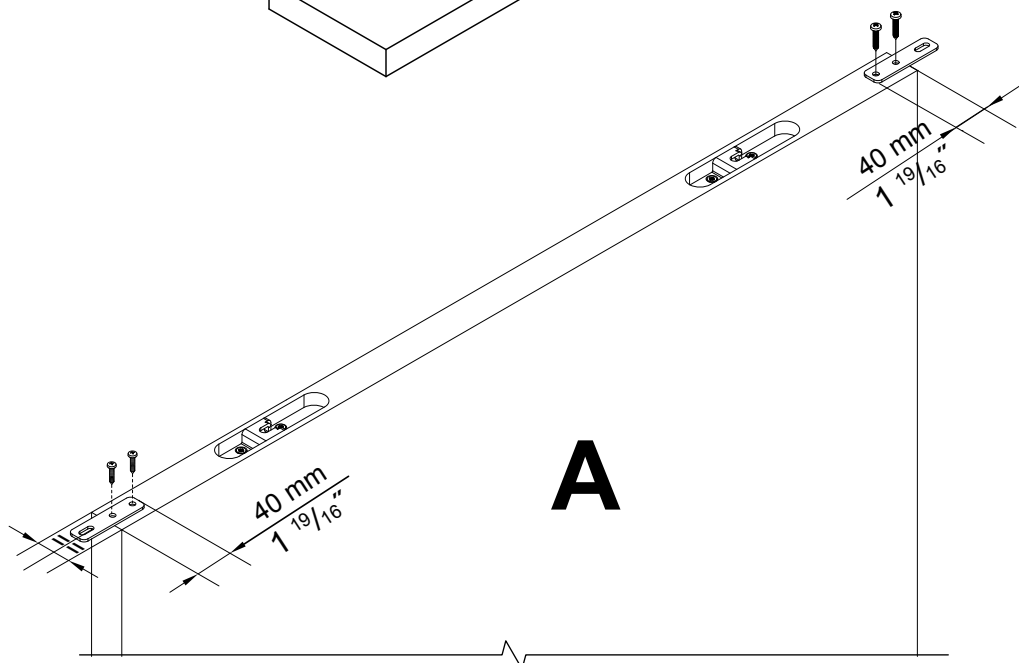
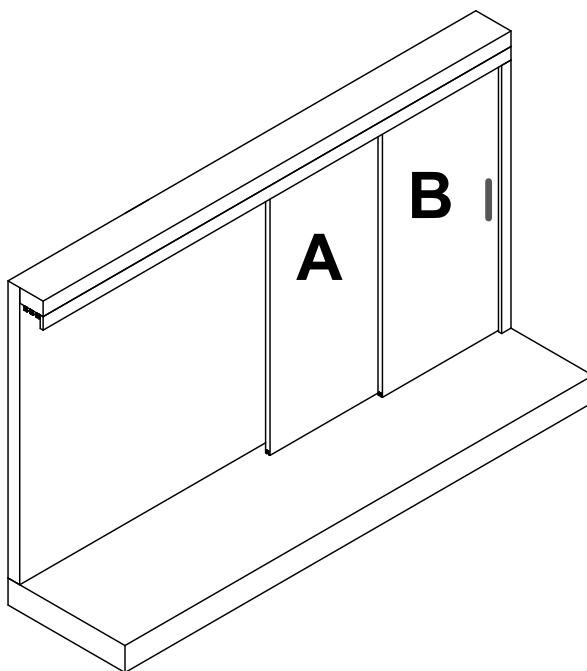
**2.**

x2

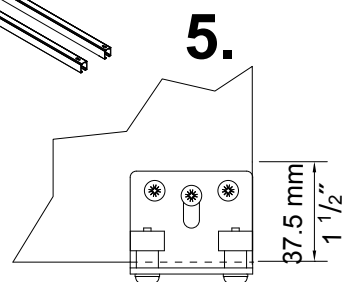
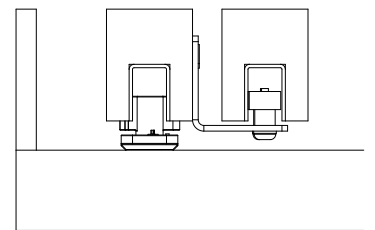
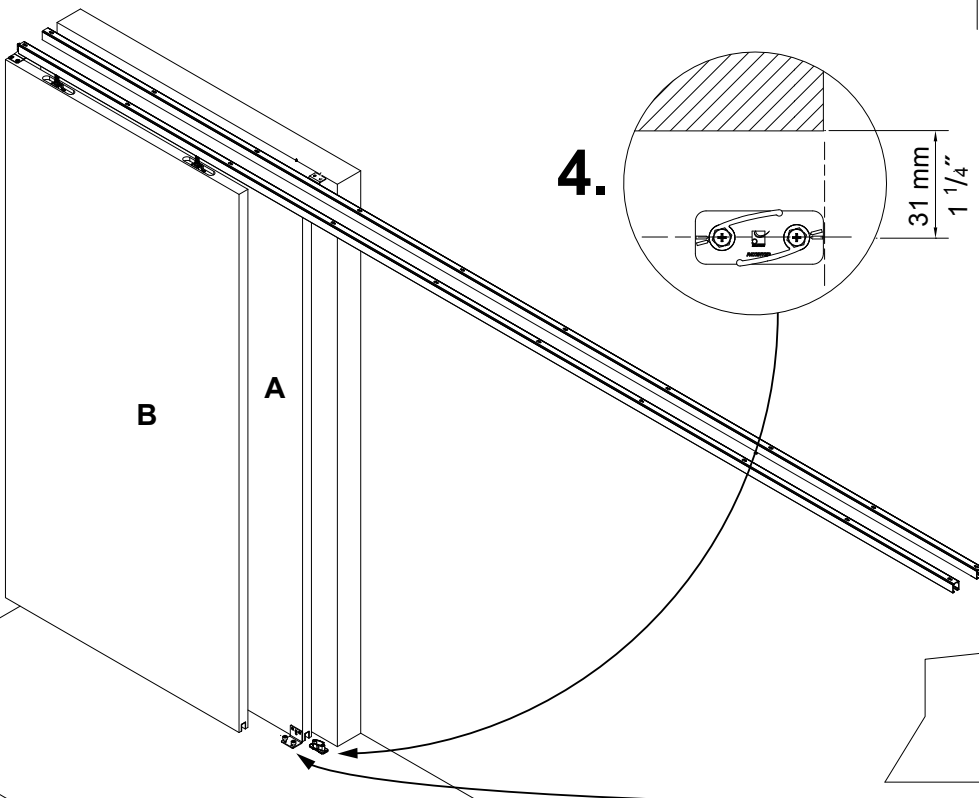
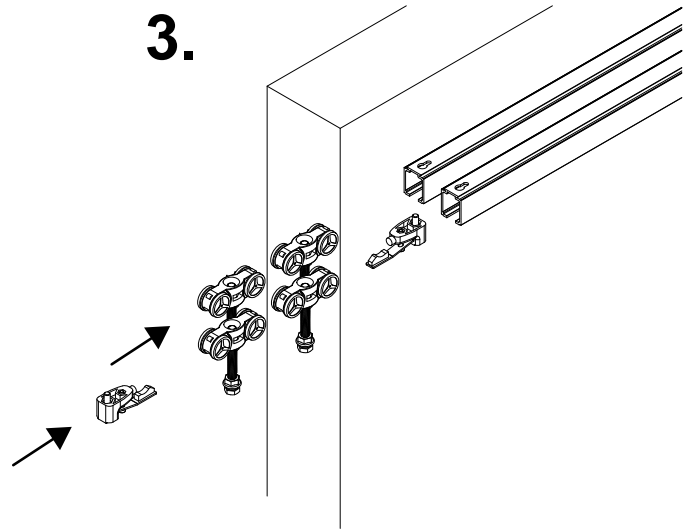
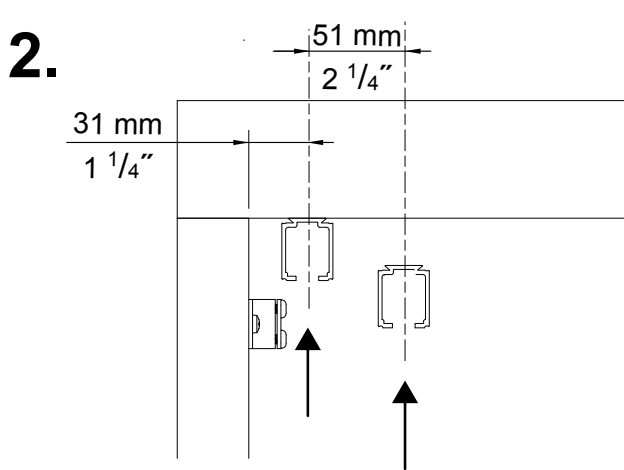
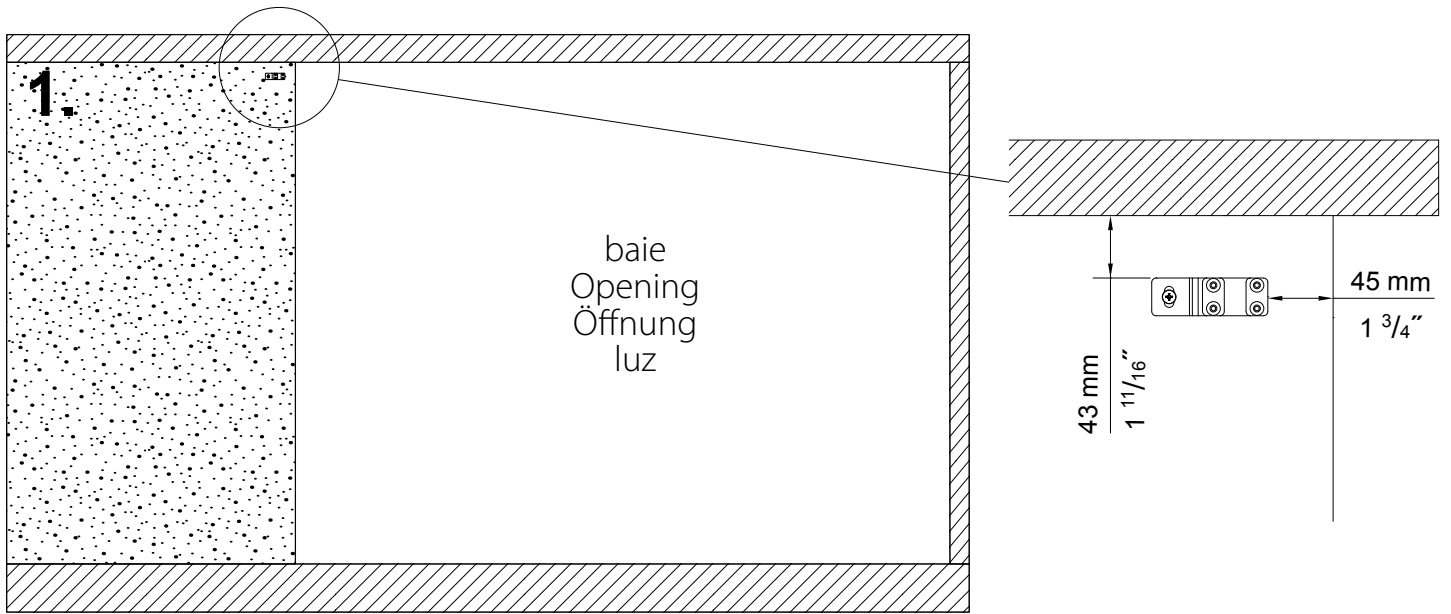


PRÉPARATION DES PANNEAUX - PANELS PREPARATION  
VORBEREITUNG DER FLÜGEL - PREPARACIÓN DE LAS HOJAS

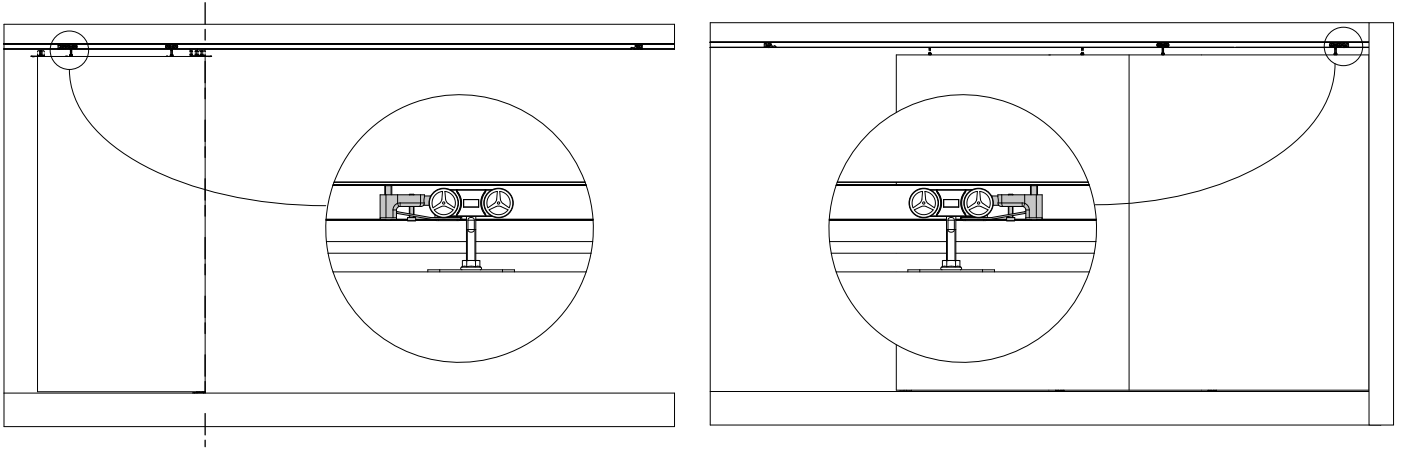
3.



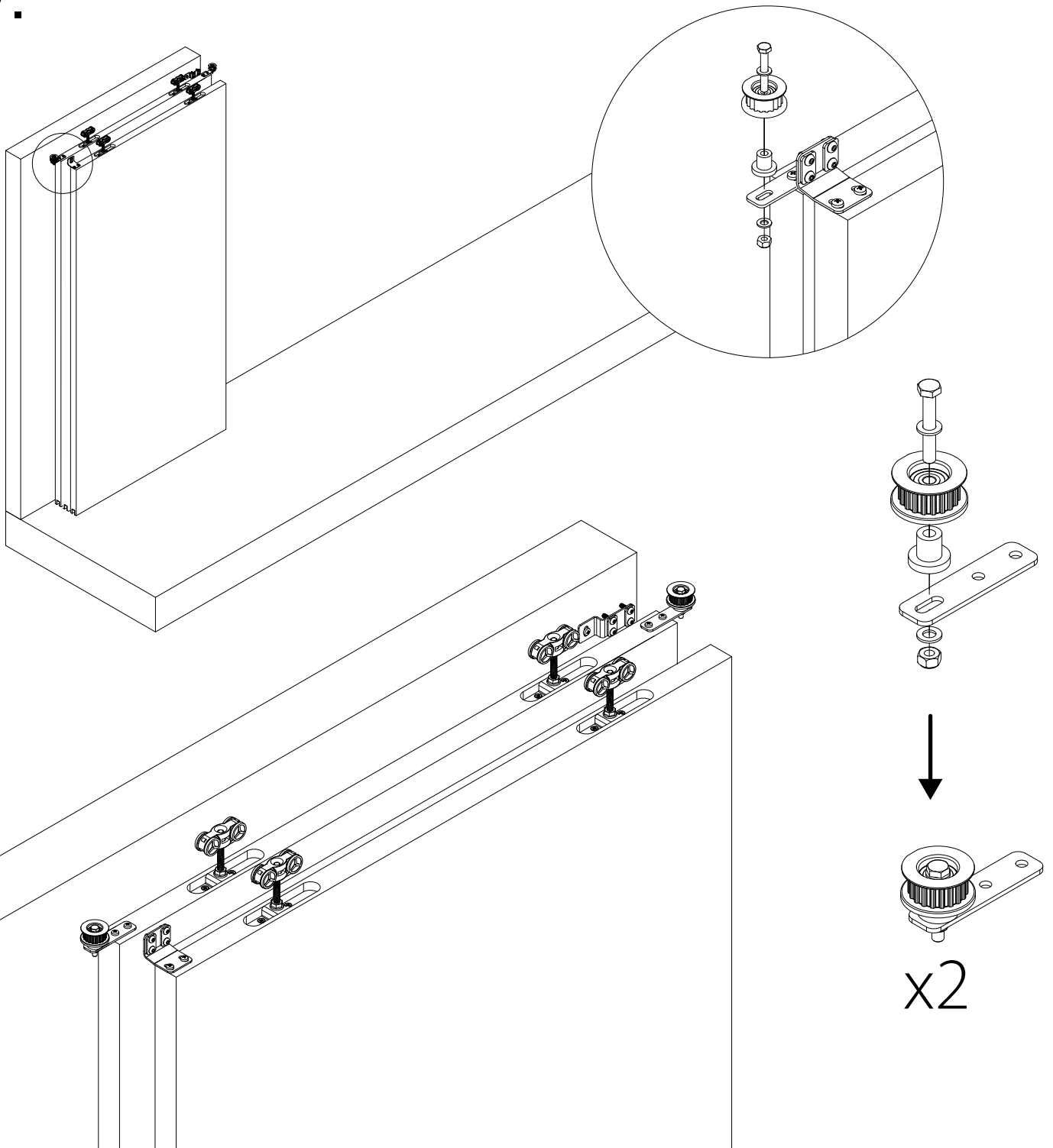
# MONTAGE - INSTALLATION - MONTAJE



6.



7.





8.

