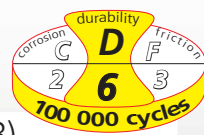




## System for wardrobe doors

**PICO® 13 - 25 - 26**

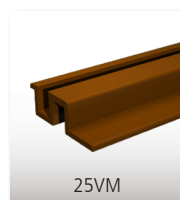
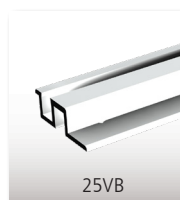
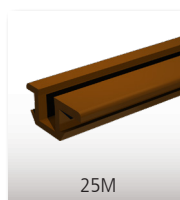
See details of the standard EN 1527 p.4



|                |   |
|----------------|---|
| CAPACITY/PANEL | 13 KG (PICO 13)<br>25 KG (PICO 25 & 26) |
| TRACK          | PVC                                     |
| MOVEMENT       | STRAIGHT                                |

**SET for 2 panels**

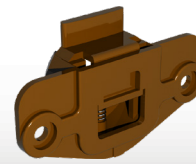
| Item Nr.    | Description  |   |
|-------------|--|---|
| PICO26-200T | Set for 2 panels including :<br>- 4 tracks <b>25V/200M</b> of 2 m. length<br>- 2 gear <b>PICO 26</b><br>- Screws and mounting instructions | 5 |

**PVC TRACKS AND STOPS common to all versions**

|          |  |    |
|----------|--|----|
| 25/200B  | White PVC track, mortising type - 2 m long<br>For upper and lower guidance | 30 |
| 25/200M  | Brown PVC track, mortising type - 2 m long<br>For upper and lower guidance | 30 |
| 25/300B  | White PVC track, mortising type - 3 m long<br>For upper and lower guidance | 30 |
| 25/300M  | Brown PVC track, mortising type - 3 m long<br>For upper and lower guidance | 30 |
| 25/500B  | White PVC track, mortising type - 5 m long<br>For upper and lower guidance | 50 |
| 25/500M  | Brown PVC track, mortising type - 5 m long<br>For upper and lower guidance | 50 |
| 25V/200B | White PVC track, screwing type - 2 m long<br>For upper and lower guidance  | 30 |
| 25V/200M | Brown PVC track, screwing type - 2 m long<br>For upper and lower guidance  | 30 |
| 25V/300B | White PVC track, screwing type - 3 m long<br>For upper and lower guidance  | 30 |
| 25V/300M | Brown PVC track, screwing type - 3 m, long<br>For upper and lower guidance | 30 |
| 10025    | Stop to keep the panels in closed position                                 | 20 |

**PICO13**

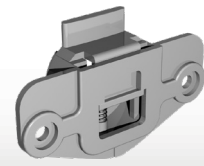
0113



1113

**PICO25**

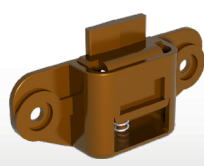
0125



1125

**PICO26**

0126



1155

**GEAR with mortising type rollers**

|        |  |    |
|--------|--|----|
| PICO13 | Gear including:<br>- 2 rollers <b>0113</b> mortising type<br>- 2 guides <b>1113</b> mortising type<br>- Screws and mounting instructions | 10 |
| PICO25 | Gear including:<br>- 2 rollers <b>0125</b> mortising type<br>- 2 guides <b>1125</b> mortising type<br>- Screws and mounting instructions | 10 |

**GEAR with screwing type rollers**

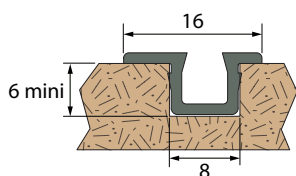
|        |  |    |
|--------|--|----|
| PICO26 | Gear including:<br>- 2 rollers <b>0126</b> , screwing type, mounted on ball bearings<br>- 2 guiding plates <b>1155</b> , screwing type<br>- Screws and mounting instructions | 10 |
|--------|--|----|

The PICO range is designed for timber framed doors of cupboards, wardrobes.

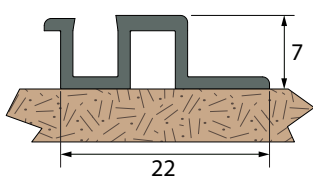
- The adjustable rollers enable an easy vertical adjustment of the door
- Doors can be very easily removed
- No pelmet is required since tracks and rollers are hidden in the frame
- Two different types of tracks : screwing and mortising



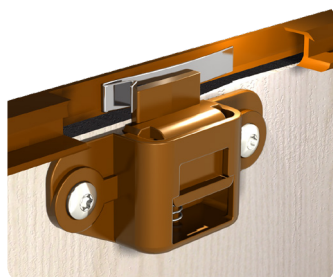
PICO® 13 - PICO® 25 - PICO® 26



**Track 25** (mortising type)  
(2 - 3 - 5 m)



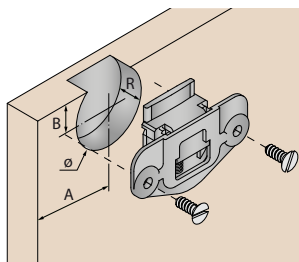
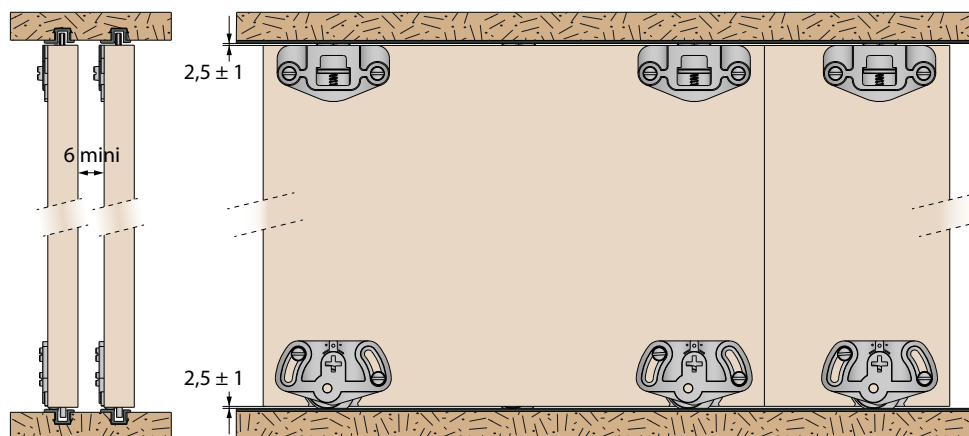
**Track 25V** (screwing type)  
(2 - 3 m)



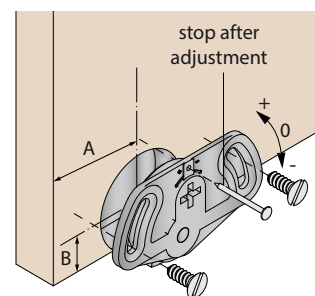
The stop **10025** allows you to immobilize panels in a chosen position.

## PICO® 13 & PICO 25

Example with mortising type tracks



|   | PICO13 | PICO25 |
|---|--------|--------|
| A | 35     | 50     |
| B | 10     | 10     |
| R | 9      | 13     |
| Ø | 30     | 35     |



## PICO® 26

Example with screwing type track on the upper part and mortising type track on the bottom

