



# FITTINGS IN STAINLESS STEEL

## 304 L & 316 L



### PERFORMANCE :

- 9010 for doors up to 60 Kg
- 9030 for doors up to 200 Kg
- 9040 for doors up to 400 Kg
- 9050 for doors up to 600 Kg

### 2 Grades of stainless steel

#### Grade 304 L

For sliding doors in a corrosive environment : food industry, etc...

#### Grade 316 L

For sliding doors in a highly aggressive environment : marine sea spray, chemical industry, hospitals, nuclear industry, etc...

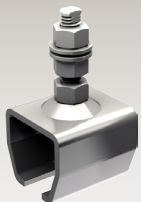


Fig. 2



Fig. 3

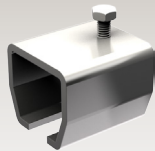


Fig. 4

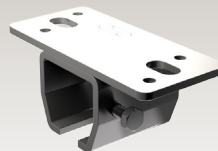


Fig. 5

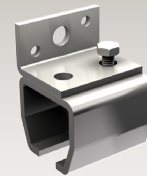


Fig. 6



Fig. 7

#### TRACKS & BRACKETS

9010 X		9030 X		9040 X		9050 X	Fig.	Description
304 L	316 L	304 L	316 L	304 L	316 L	304 L		
9010 XA2/6	9010 XA4/6	9030 XA2/6	9030 XA4/6	9040 XA2/6	9040 XA4/6	9050 XA2/6	1	STAINLESS STEEL track - 6 meters long
9011 XA2	9011 XA4	9031 XA2	9031 XA4	9041 XA2	9041 XA4	9051 LXA2	2	Adjustable bracket
9013 XA2	9013 XA4	9033 XA2	9033 XA4	9043 XA2	9043 XA4	9053 XA2	3	Angle plate - screwing type
9018 XA2	9018 XA4	9038 XA2	9038 XA4	9048 XA2	9048 XA4	9058 XA2	4	Bracket - welding type
9018 HXA2	9018 HXA4	9038 HXA2	9038 HXA4	9048 HXA2	9048 HXA4	9058 HXA2	5	Soffit fixing bracket
9018 VXA2	9018 VXA4	9038 VXA2	9038 VXA4	9048 VXA2	9048 VXA4	9058 VXA2	6	Wall fixing bracket
9011 MXA2	9011 MXA4	9031 MXA2	9031 MXA4	9041 MXA2	9041 MXA4	9051 MXA2	7	Joining bracket

### PRACTICAL :

Fast mounting and setting thanks to the numerous accessories



Fig. 1

FOR DOORS UP TO 60 KG		track 9010 X	
Item Nr		Fig.	Description
304 L	316 L		
99212 XA2	99212 XA4	8	Hanger (nylon wheels, smooth axis, M10 fixing screw) CAPACITY : 30 kg/hanger
36XA2	36 XA4	11	Plate, top fixing for hangers 99212X (hole M10)
9118 XA2	9118 XA4	13	Stop



Fig. 8



Fig. 9

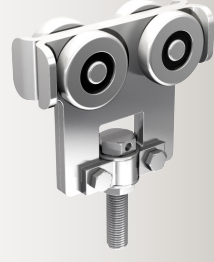


Fig. 10

FOR DOORS UP TO 200 KG		track 9030 X	
Item Nr		Fig.	Description
304 L	316 L		
99232 XA2	99232 XA4	8	Hanger (nylon wheels, smooth axis, M12 fixing screw) CAPACITY : 50 kg/hanger
9232 XSA2	9232 XSA4	9	Hanger (ball bearings, with M12 fixing screw) CAPACITY : 100 kg/hanger
56 XA2	56 XA4	11	Plate, top fixing for hangers 99232X and 9232XS (hole M12)
9139 XA2	9139 XA4	14	Stop



Fig. 11



Fig. 12

FOR DOORS UP TO 400 KG		track 9040 X	
Item Nr		Fig.	Description
304 L	316 L		
9242 XSA2	9242 XSA4	9	Hanger (ball bearings, with M14 fixing screw) CAPACITY : 200 kg/hanger
66 XA2	66 XA4	12	Plate, top fixing for hangers 9242XS (hole M14)
9149 XA2	9149 XA4	14	Stop



Fig. 13

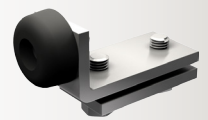


Fig. 14

FOR DOORS UP TO 600 KG		track 9050 X	
Item Nr		Fig.	Description
304 L	316 L		
9255 XSA2	-	10	Hanger (ball bearings, with M16 fixing screw) CAPACITY : 300 kg/hanger
86 XA2	-	12	Plate, top fixing for hangers 9255XS (hole M16)
9159 XA2	-	14	Stop

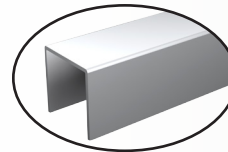


Fig. 15

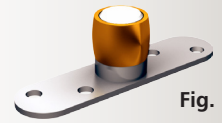


Fig. 16

### ACCESSORIES

GUIDES & HANDLE			
Item Nr	304 L	316 L	Description
1110 XA2/6	1110 XA4/6	15	U-channel 30x30 - 6 meters long
1099 XA2	-	16	Bottom guide with a brass olive on a round ended plate - Screwing type for U-profile 30x30
1110 GN	-	17	Nylon guide for U-channel 30x30 120 x 25 x 25
1110 GDL	-	18	Nylon guide for U-channel 30x30 100 x 25 x 25
1290 X	-	19	Finger pull in stainless steel - 200 x 90 mm

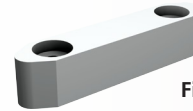


Fig. 17

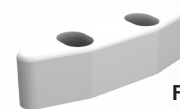
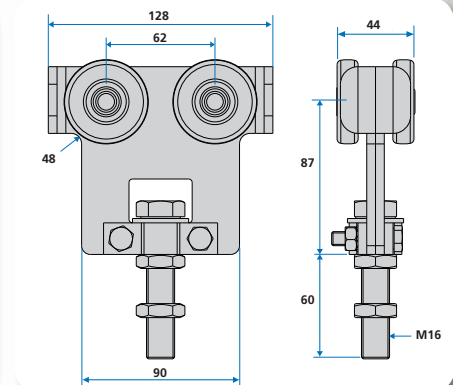
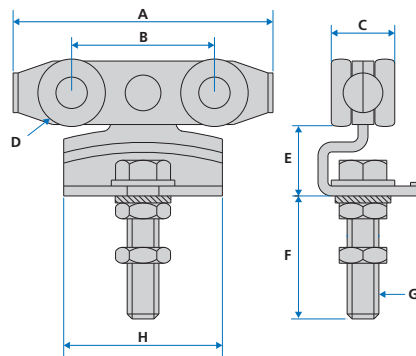


Fig. 18



Fig. 19

Item Nr	A	B	C	D	E	F	G	H
99212 XA2	87	49	20	23	26	50	M10	50
99212 XA4	87	49	20	23	26	50	M10	50
99232 XA2	89	53	25	28	30	63	M12	60
99232 XA4	89	53	25	28	30	63	M12	60
9232 XA2	89	53	25	28	30	63	M12	60
9232 XA4	89	53	25	28	30	63	M12	60
9242 XA2	137	72	32	34	34	72	M14	80
9242 XA4	137	72	32	34	34	72	M14	80



Item Nr	A	B
9010 X	28	30
9030 X	35	40
9040 X	43,5	48,5
9050 X	60	65

