



INSTRUCTION DE MONTAGE
MONTAGEANLEITUNG
INSTRUCTIONS FOR ASSEMBLY
INSTRUCCIONES DE MONTAJE

WIDOOR

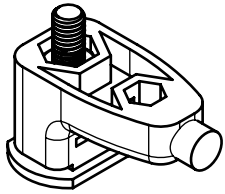
NM111W



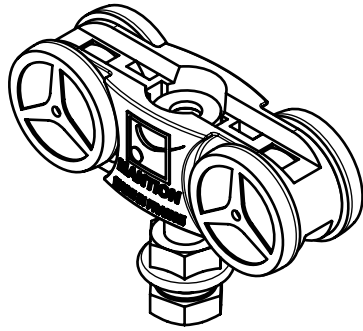
PORTE D'INTÉRIEUR MOTORISÉE
INNENTÜR MIT ELEKTRO-ANTRIEB
INTERIOR AUTOMATIC DOOR
PUERTA DE INTERIOR MOTORIZADA



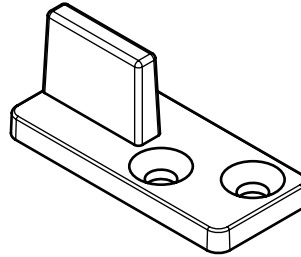
COMPOSITION - ZUSAMMENSETZUNG - COMPOSICIÓN



x2



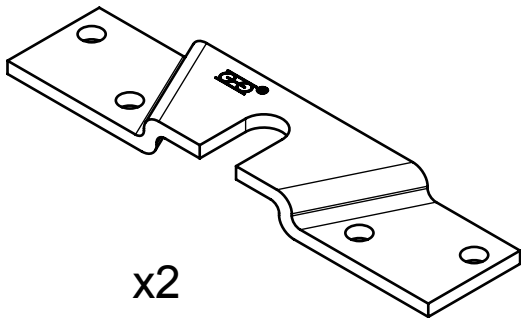
x2



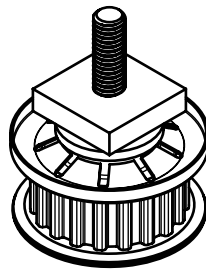
x1



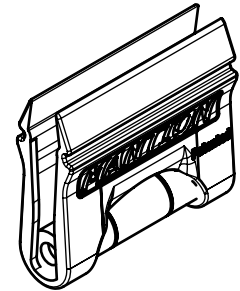
5 m



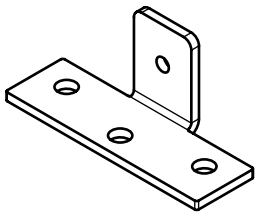
x2



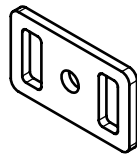
x1



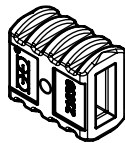
x1



x1



x1



x2



A
x1



B
x3



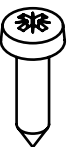
C
x8



D
x2



E
x2



F
x2

CONDITIONS DE POSE / MONTAGEBEDINGUNGEN / INSTALLATION REQUIREMENTS / CONDICIONES DE COLOCACION:

- Produit destiné à une utilisation en intérieur / Dieses Produkt ist nur für Innenanwendung geeignet / For indoor use only / Producto para utilización en interior
- Ne pas installer dans des endroits humides / Nicht in feuchten Atmosphären verwenden / Do not install in humid places / No instalar en lugares húmedos
- Le montage doit être effectué par des monteurs qualifiés / Die Montage muss von qualifizierten Handwerkern geführt werden / Installation must be performed by skilled personnel / el montaje tiene que hacerse por instaladores cualificados

OUTILLAGE NÉCESSAIRE A LA POSE / BENÖTIGTE WERKZEUGE / REQUIRED TOOLS FOR ASSEMBLY / HERRAMIENTA NECESARIA PARA LA COLOCACIÓN:

- Mètre / Metermass / Measuring tape / Flexometro
- Visseuse/perceuse à percussion (selon type de support) / Einschraubmaschine / Schlagbohrer (je nach dem Wandmaterial) / Percussion drill (if needed) / Atornillador / taladro de percusión (en función del soporte)
- Niveau à bulle / Wasserwaage / Water level tool / Nivel de burbuja
- Clés BTR de 3 et 4 / Schlüssel / Allen wrenches (3 and 4 mm) / Llave Allen de 3 y 4
- Vis à bois TR 4,5x30 (+ chevilles, selon type de support) / Holzschraube TR 4.5x30 / TR 4,5x30 wood screws (+ plugs, if needed) / Tornillo para madera cabeza redonda 4,5x30 (+ tacos ó anclajes, en función del soporte)

DIMENSIONS / MASSE / SIZING / DIMENSIONES (mm):

Ecoinçon min. côté refoulement / Min. Eckenmasse auf Stauplatzseiten / Min. nook for pushback side / Rincón min. Lado retroceso : **L + 280 mm**

Ecoinçon min. côté fermeture / Min. Eckenmasse auf Schliess-Seiten / Min. nook for closing side / Rincón min. Lado cierre: **50 mm**

Linteau min. / Min. Türsturz / Min. lintel / Dintel min: **130 mm**

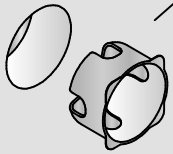
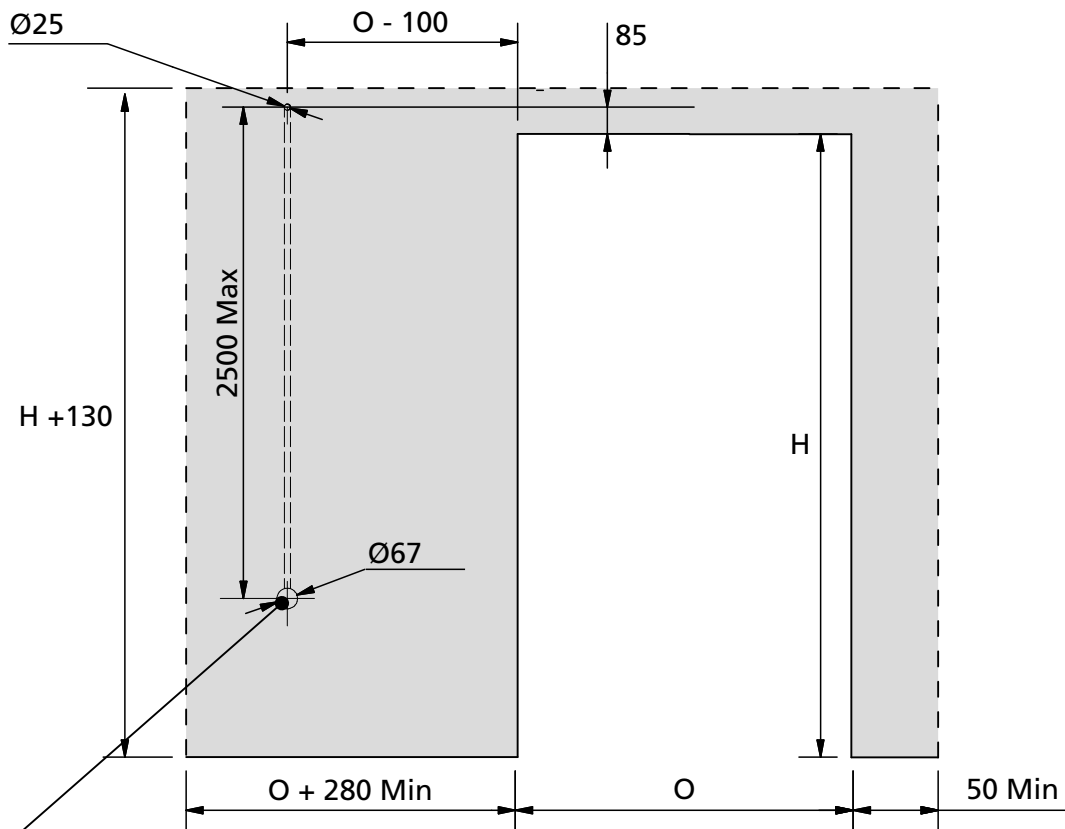
Hauteur du panneau / Paneelhöhe / Panel height / Altura del panel: **H**

Largeur panneau / Paneelbreite / Panel width / Anchura del panel: **L + 80 mm**

Epaisseur panneau / Paneelstärke / Panel thickness / Grueso del panel: **40 mm MAX**

Poids panneau / Paneelgewicht / Panel weight / Peso panel: **80 Kg MAX**

WIDOOR INSIDE

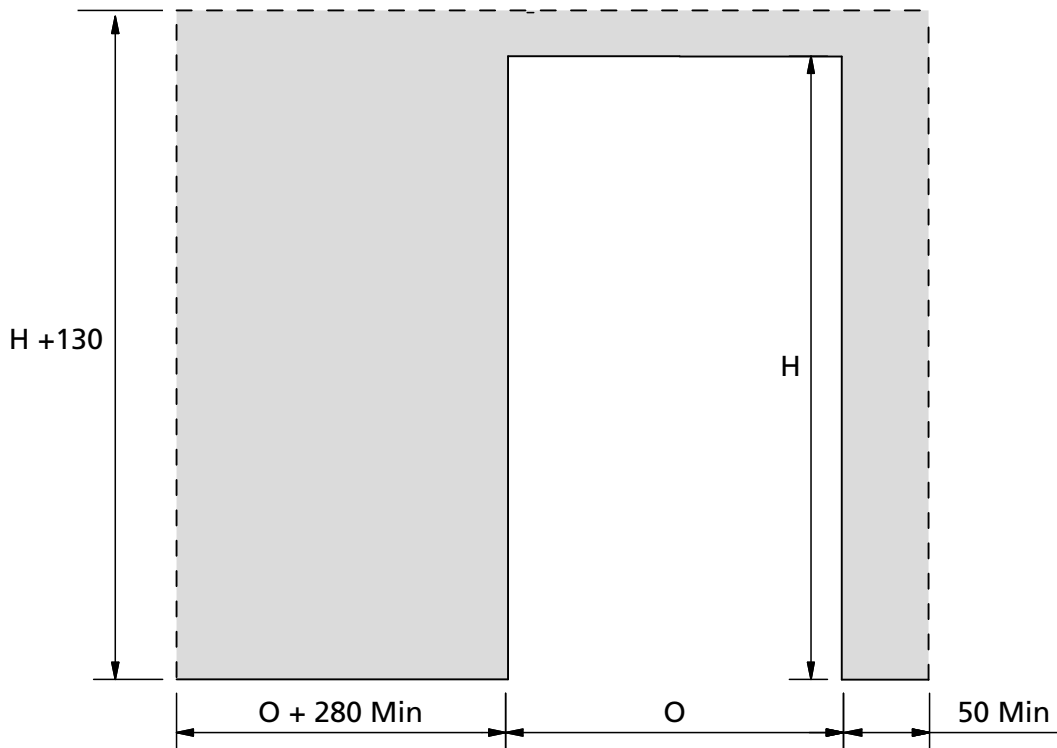


IMPORTANT: le boîtier de gestion doit être toujours accessible pour les opérations de réglage et les éventuelles interventions qui pourraient se rendre nécessaires.

WICHTIG: die Steuerungseinheit muss für Einstellungen sowie Wartungsarbeit immer zugänglich sein.

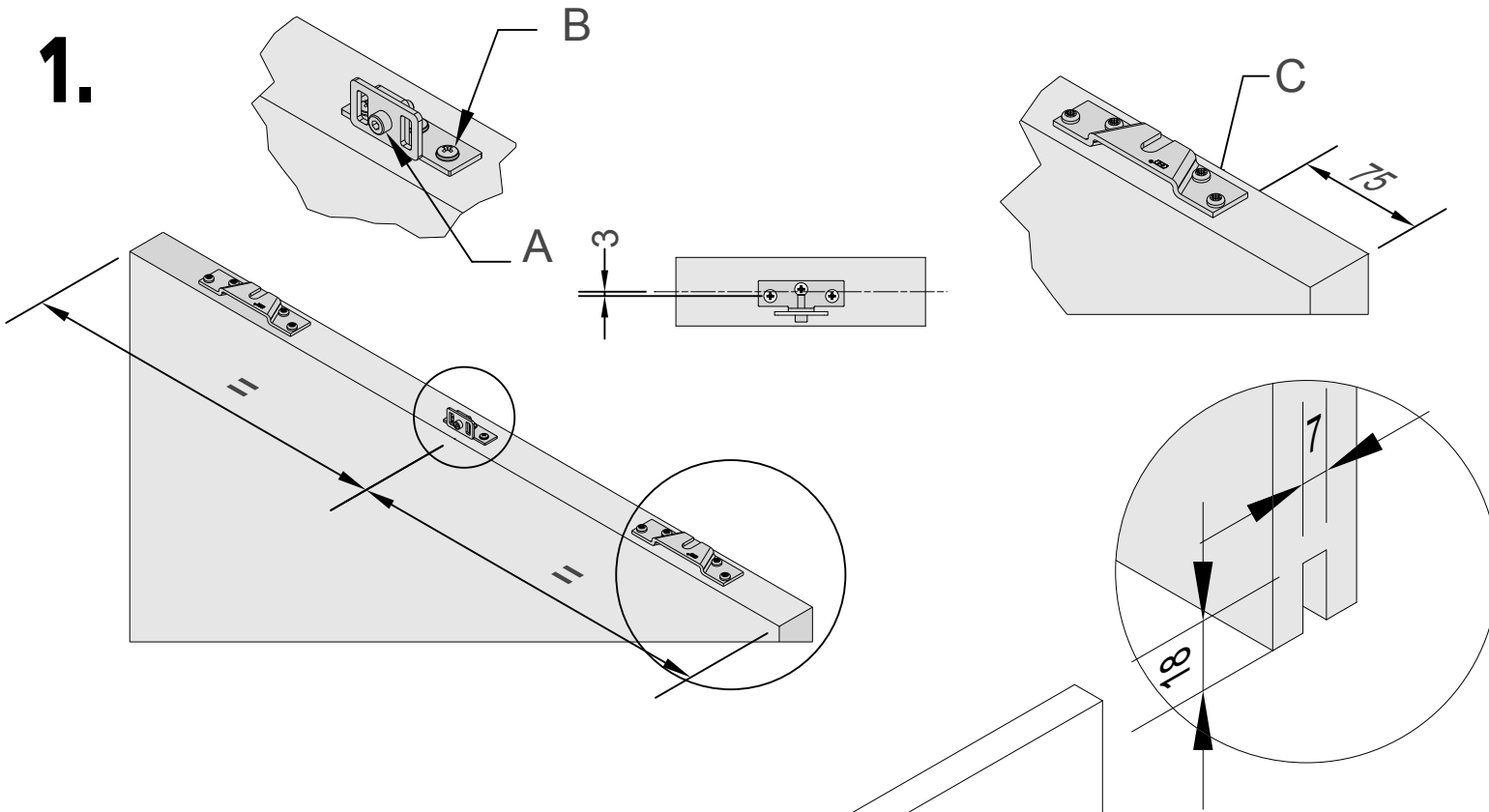
WARNING: the electronic board must be accessible for any further setting operation

WIDOOR

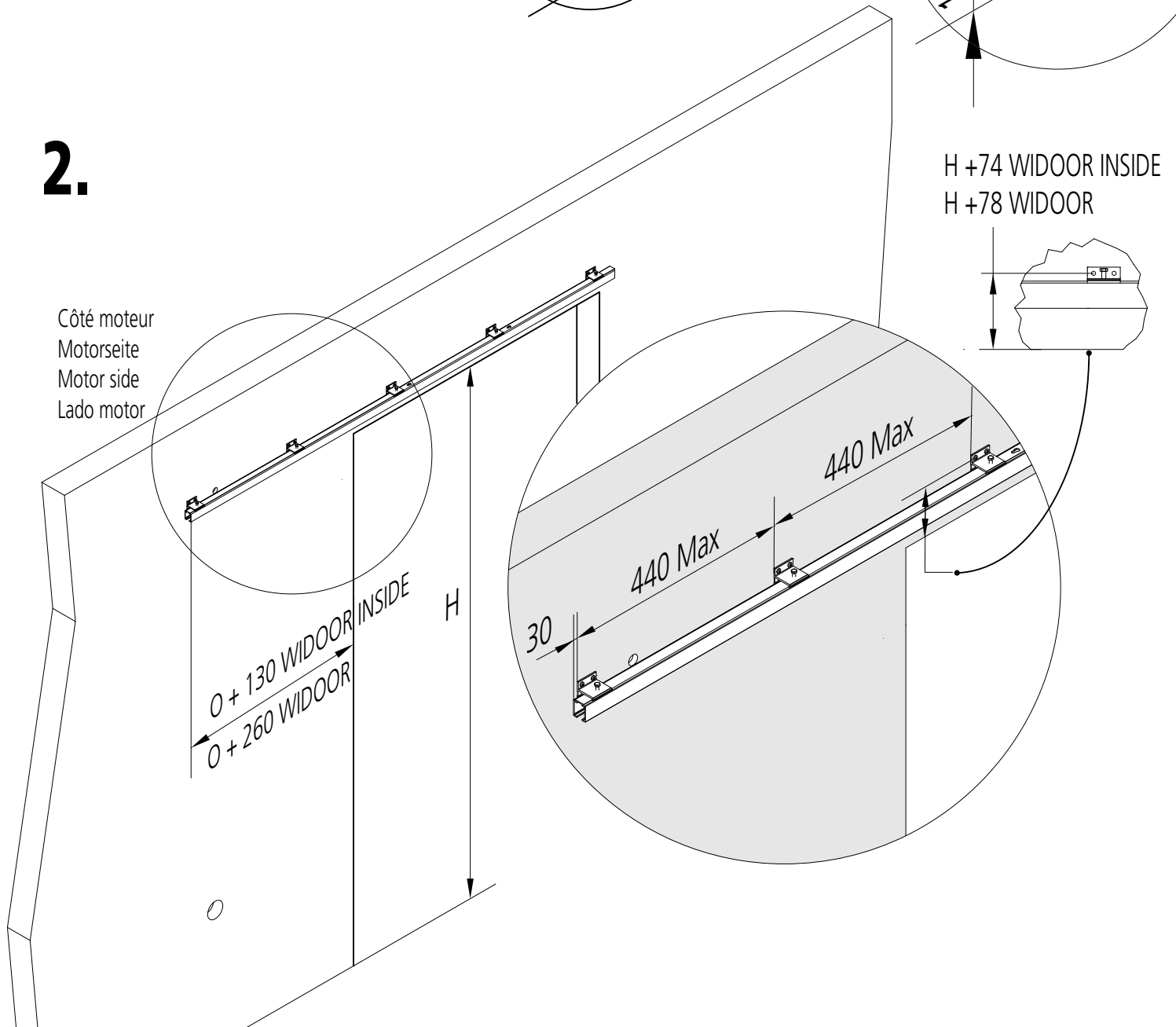


INSTALLATION / MONTAGE / ASSEMBLY / MONTAJE

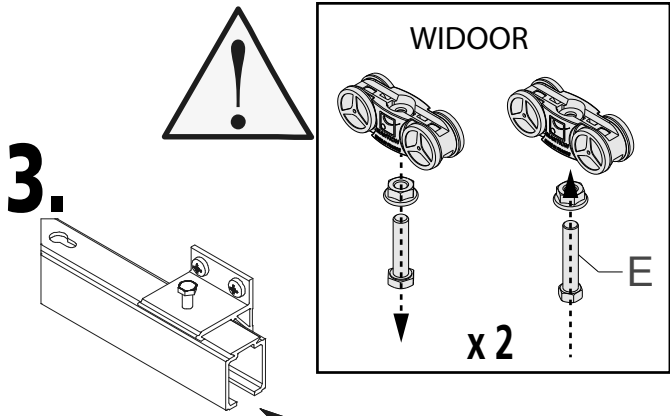
1.



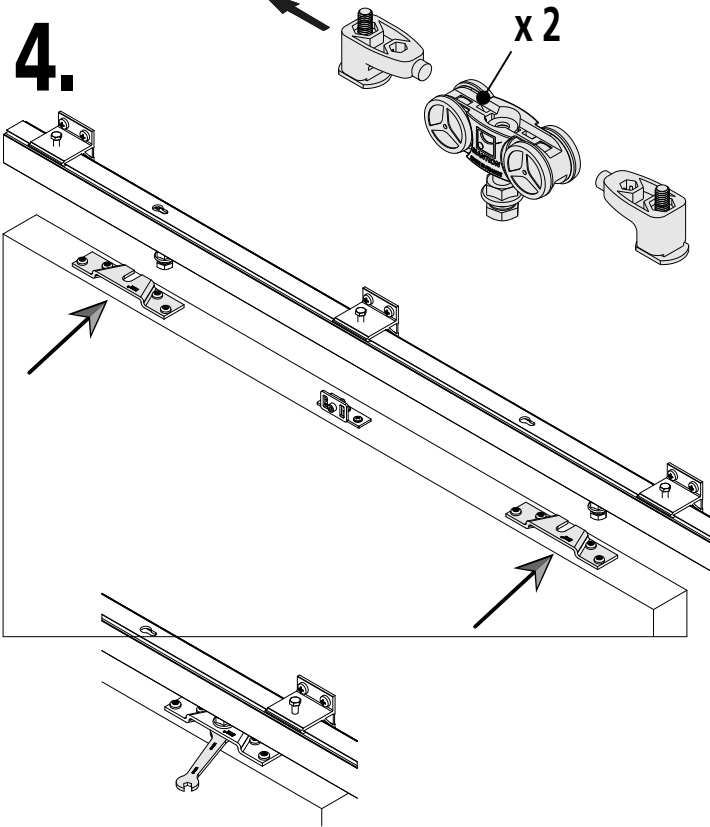
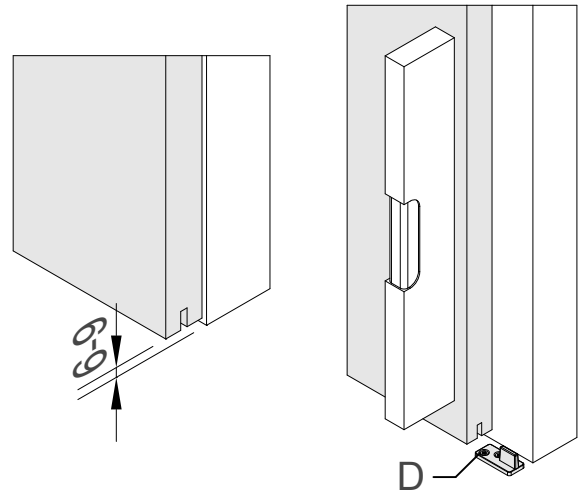
2.



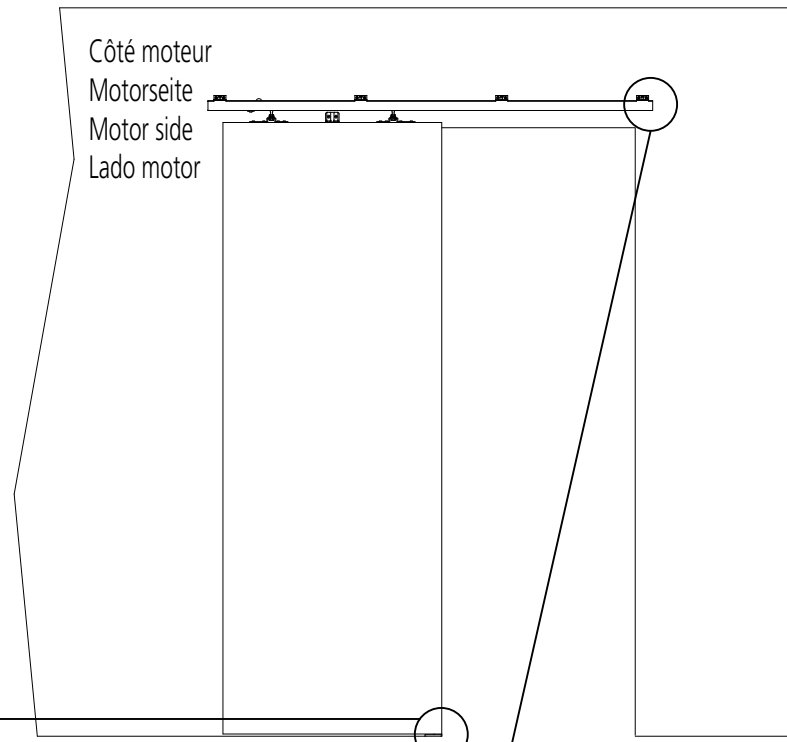
INSTALLATION / MONTAGE / ASSEMBLY / MONTAJE



5.

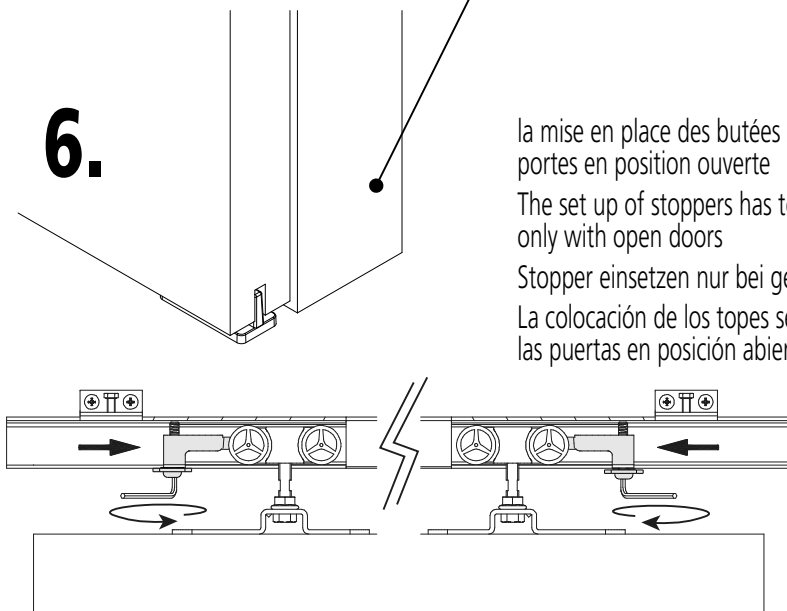


Côté moteur
Motorseite
Motor side
Lado motor

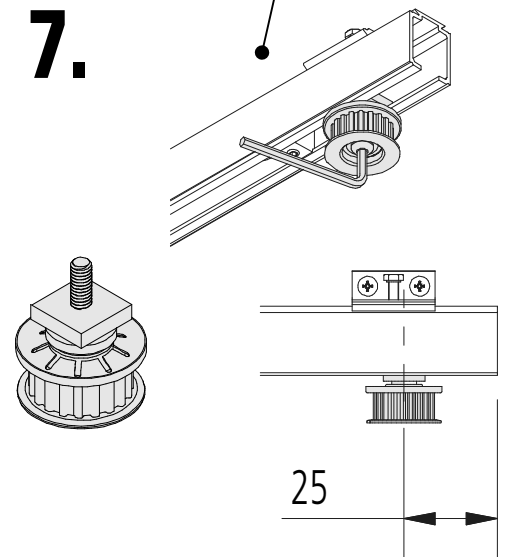


6.

la mise en place des butées s'effectue
portes en position ouverte
The set up of stoppers has to be make
only with open doors
Stopper einsetzen nur bei geöffnete Tür
La colocación de los topos se hace con
las puertas en posición abierta

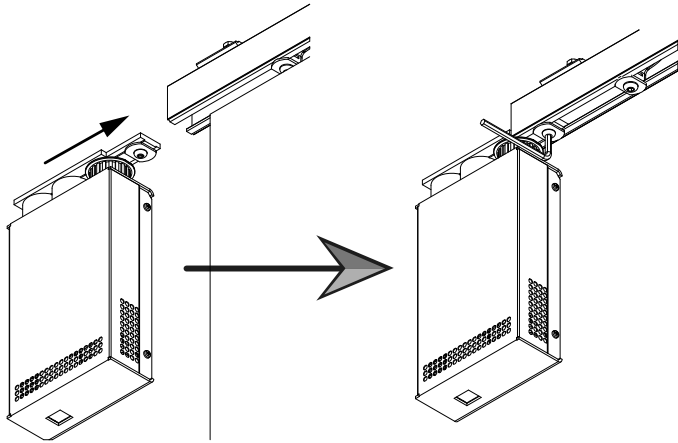


7.

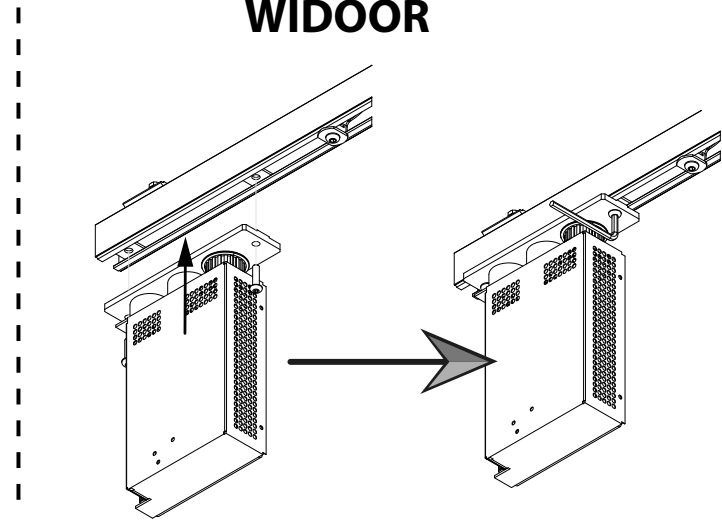


8.

WIDOOR INSIDE

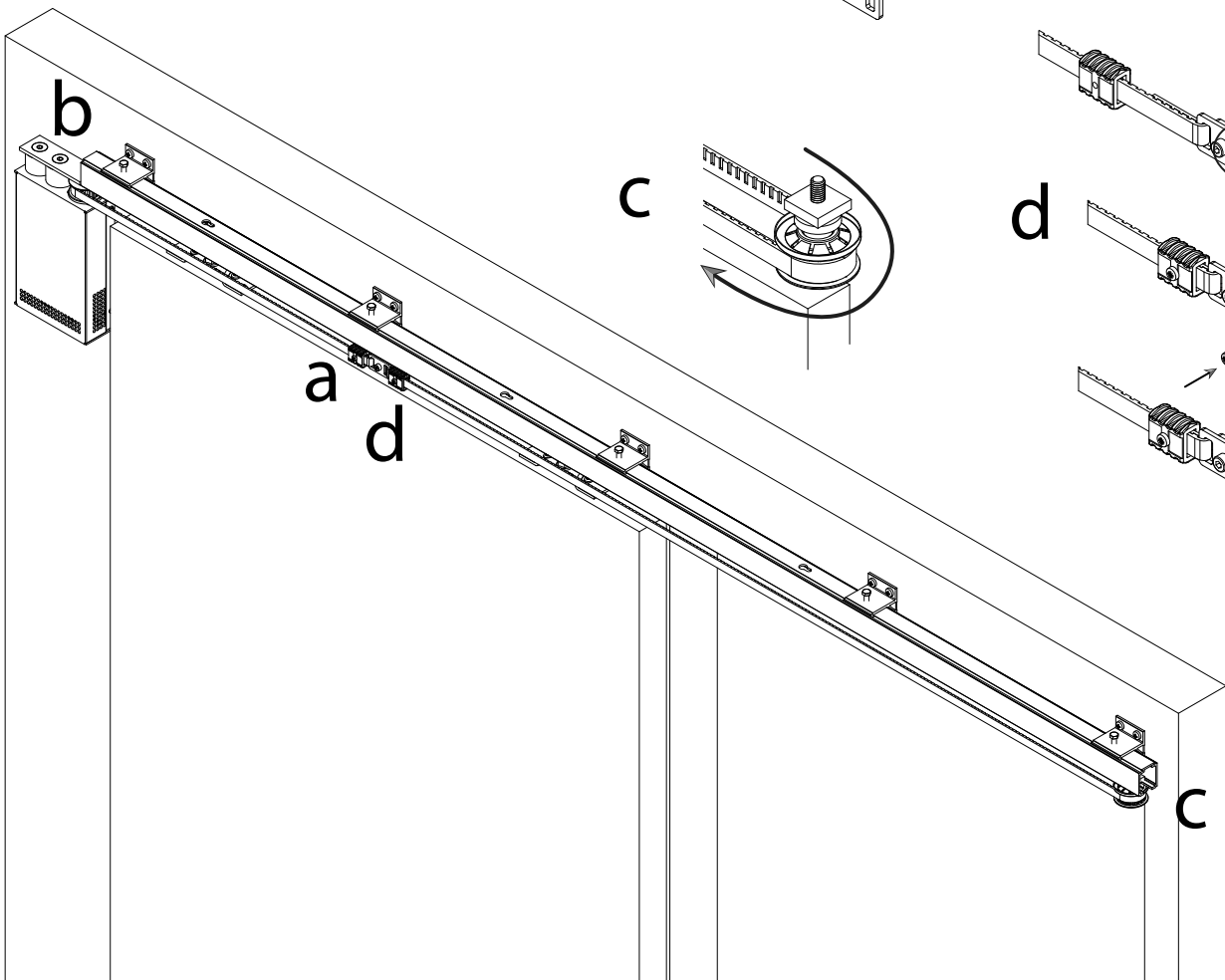
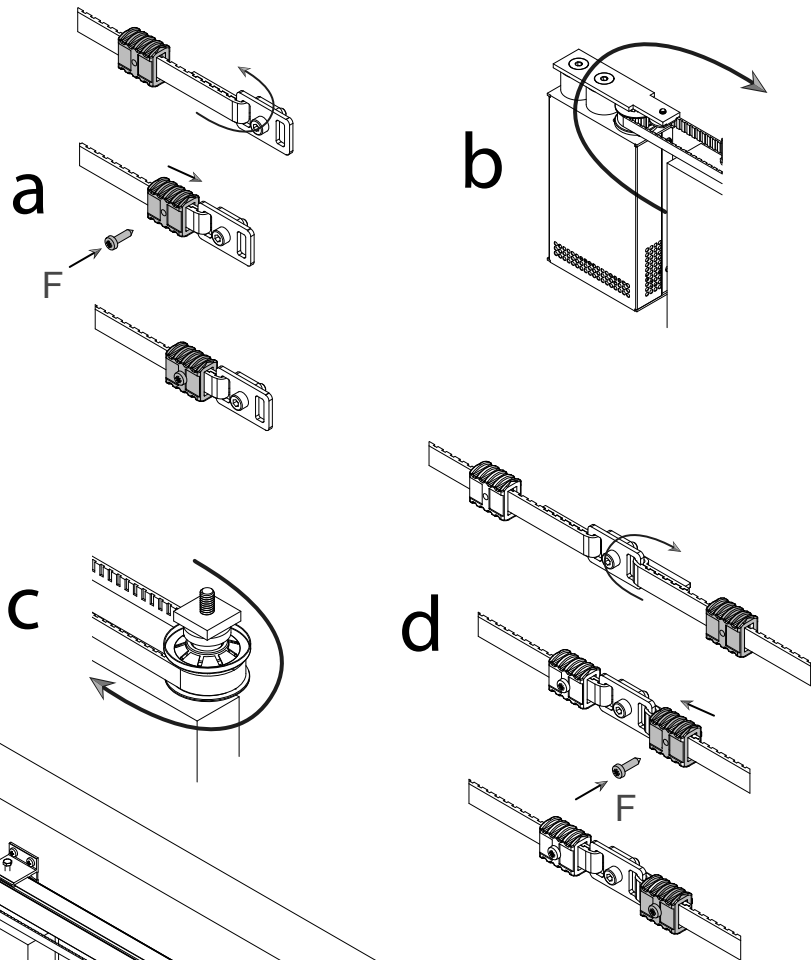


WIDOOR



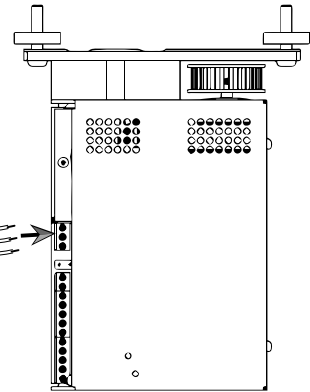
9.

Le montage de la courroie doit impérativement se faire : porte en position ouverte ou fermée
 Die Montage des Riemens soll unbedingt mit geöffneter / oder geschlossener Tür kommen
 The assembly of the belt necessarily has to be made with opened / or closed door.
 El montaje de la correa tiene que hacerse imperativamente con puerta en posición abierta o cerrada

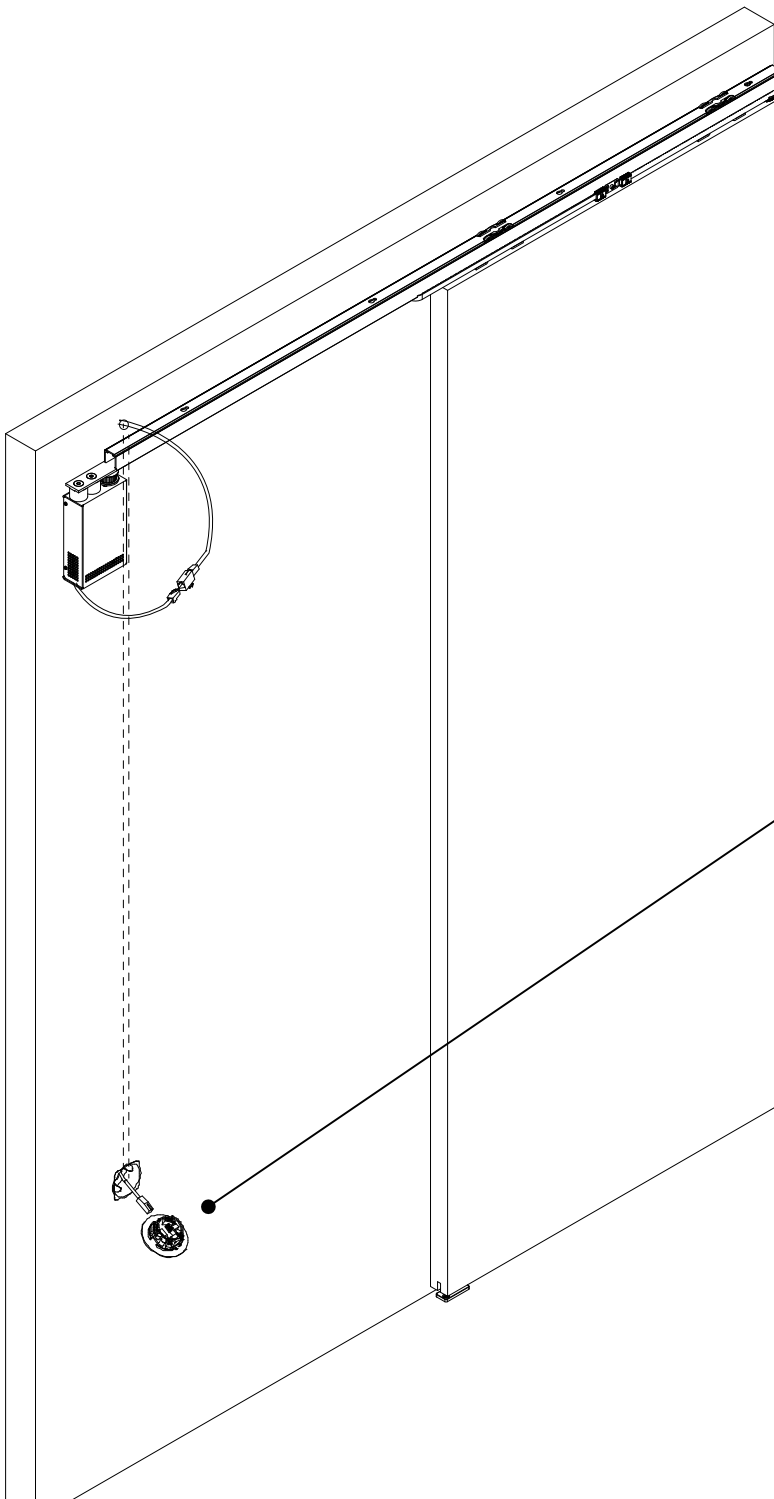


10.

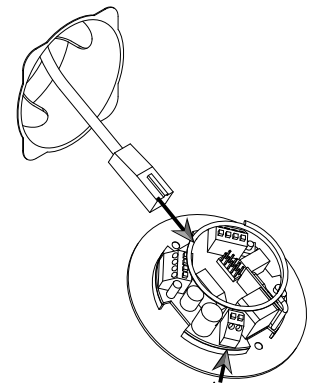
WIDOOR



230V AC



WIDOOR INSIDE



**24V DC
+5%
2.5A**