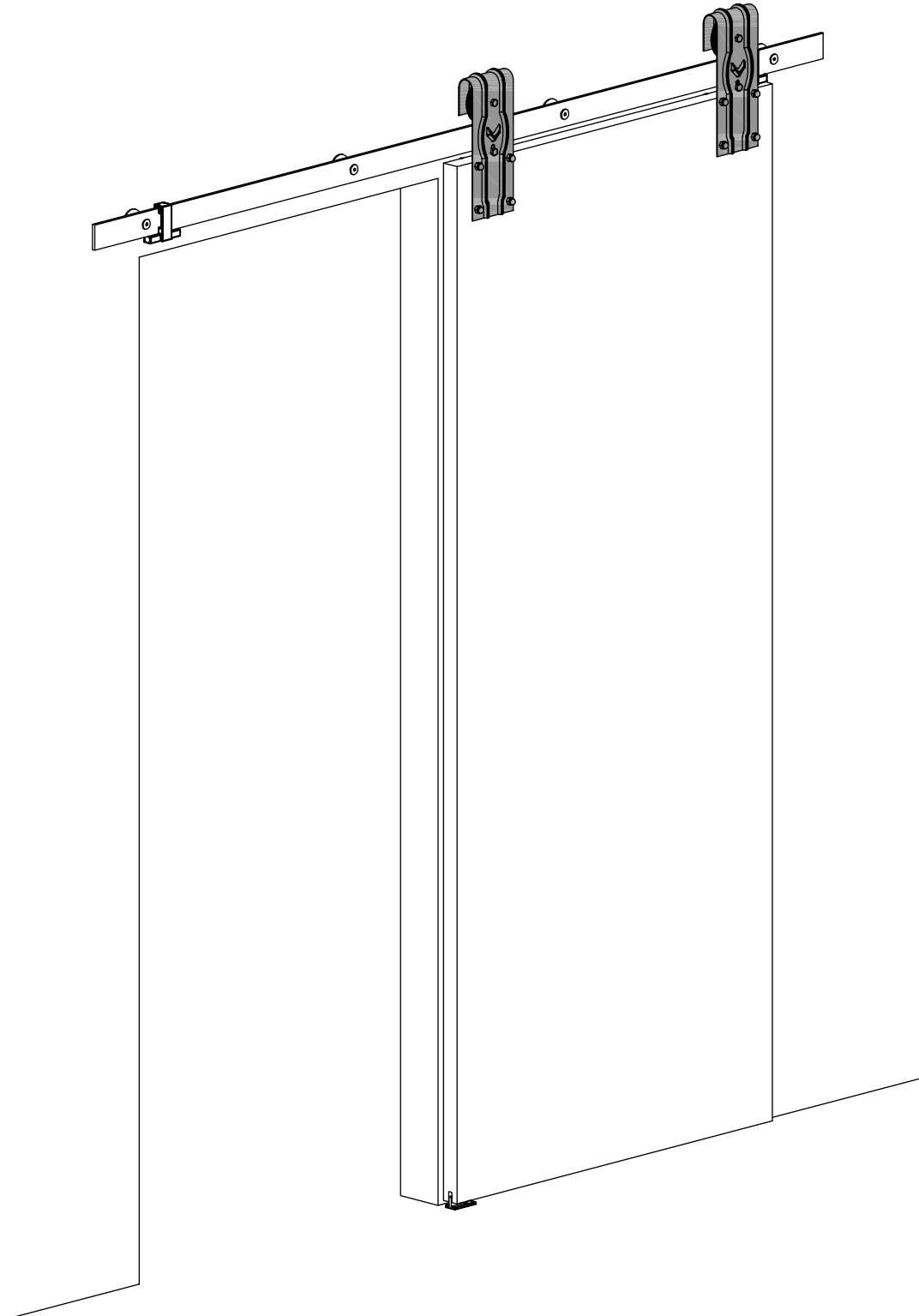
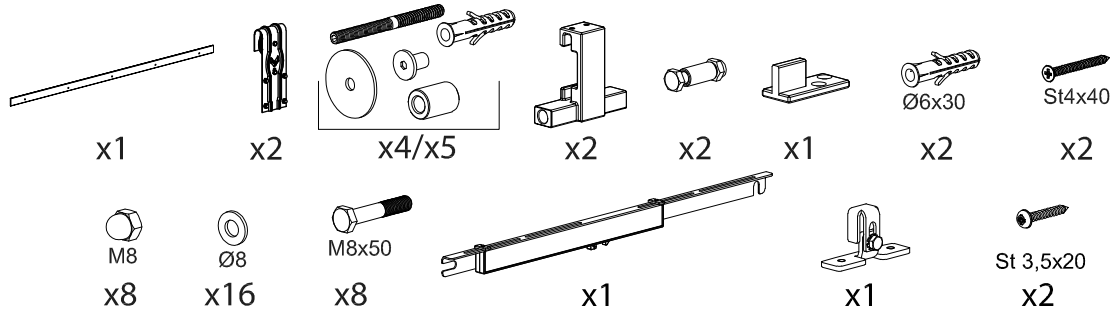




INSTRUCTION DE MONTAGE  
MONTAGEANLEITUNG  
INSTRUCTIONS FOR ASSEMBLY  
INSTRUCCIONES DE MONTAJE

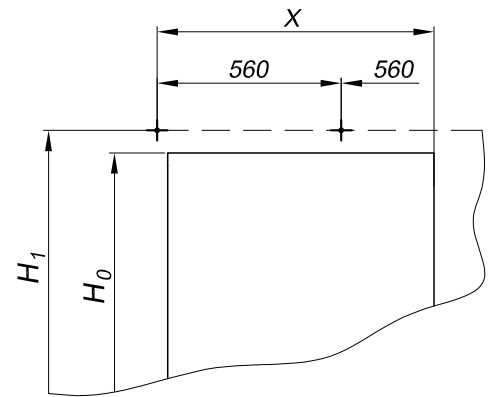
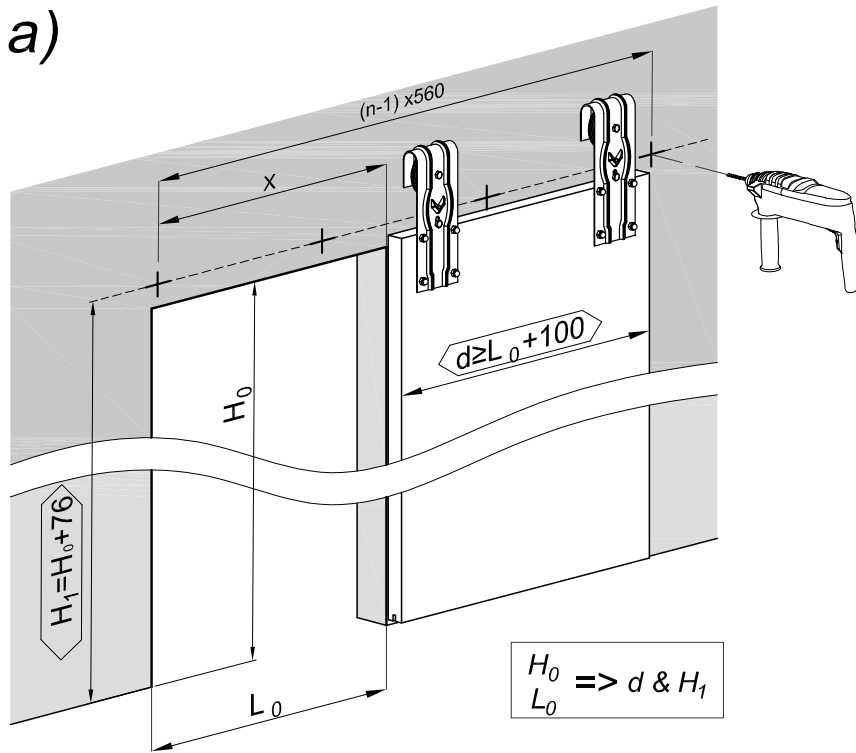
# ROC DESIGN RD-F-B / RD-F-C





**1**

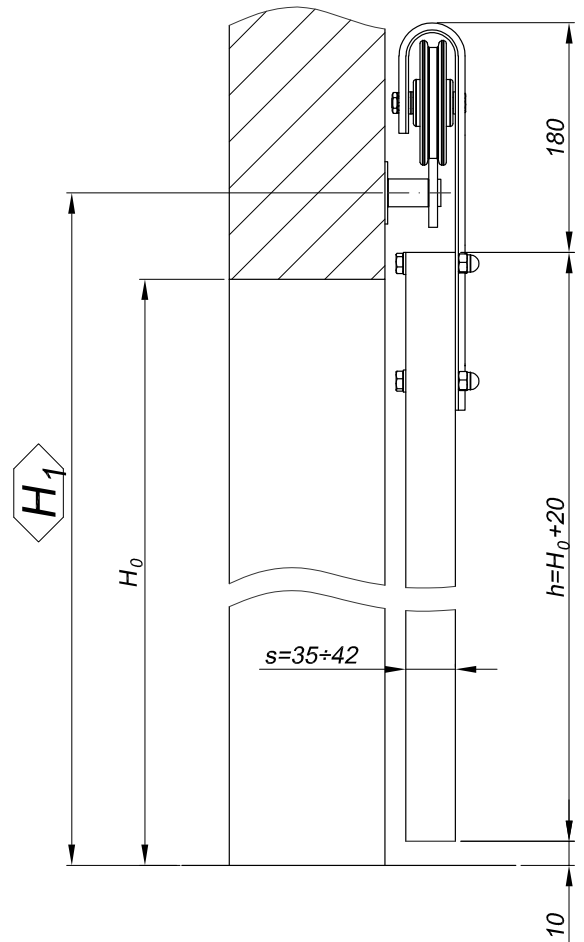
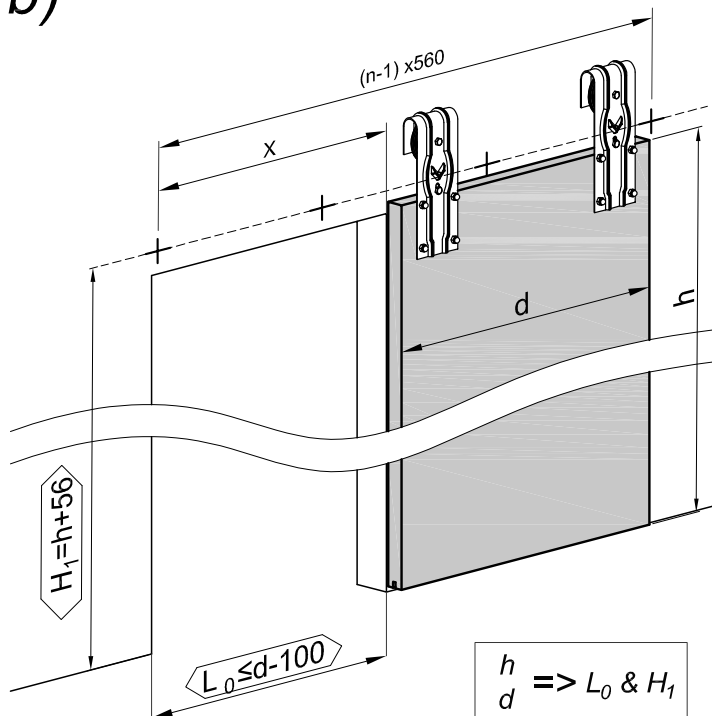
**a)**



$L_{Track}$ [mm]	1950	2400
X [mm]	840	1120
n	4	5

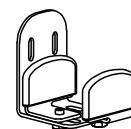
$$\begin{matrix} H_0 \\ L_0 \end{matrix} \Rightarrow d \ \& \ H_1$$

**b)**



$$\begin{matrix} h \\ d \end{matrix} \Rightarrow L_0 \ \& \ H_1$$

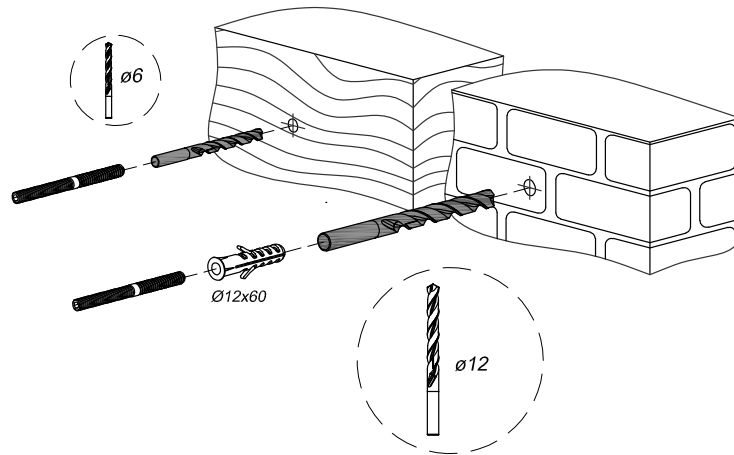
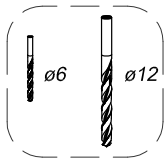
NM\_RD\_008



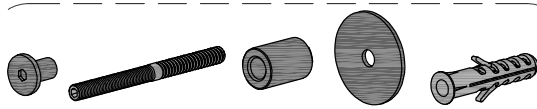
$$\begin{matrix} H_1 = H_0 + 81 \\ H_1 = h + 61 \end{matrix}$$



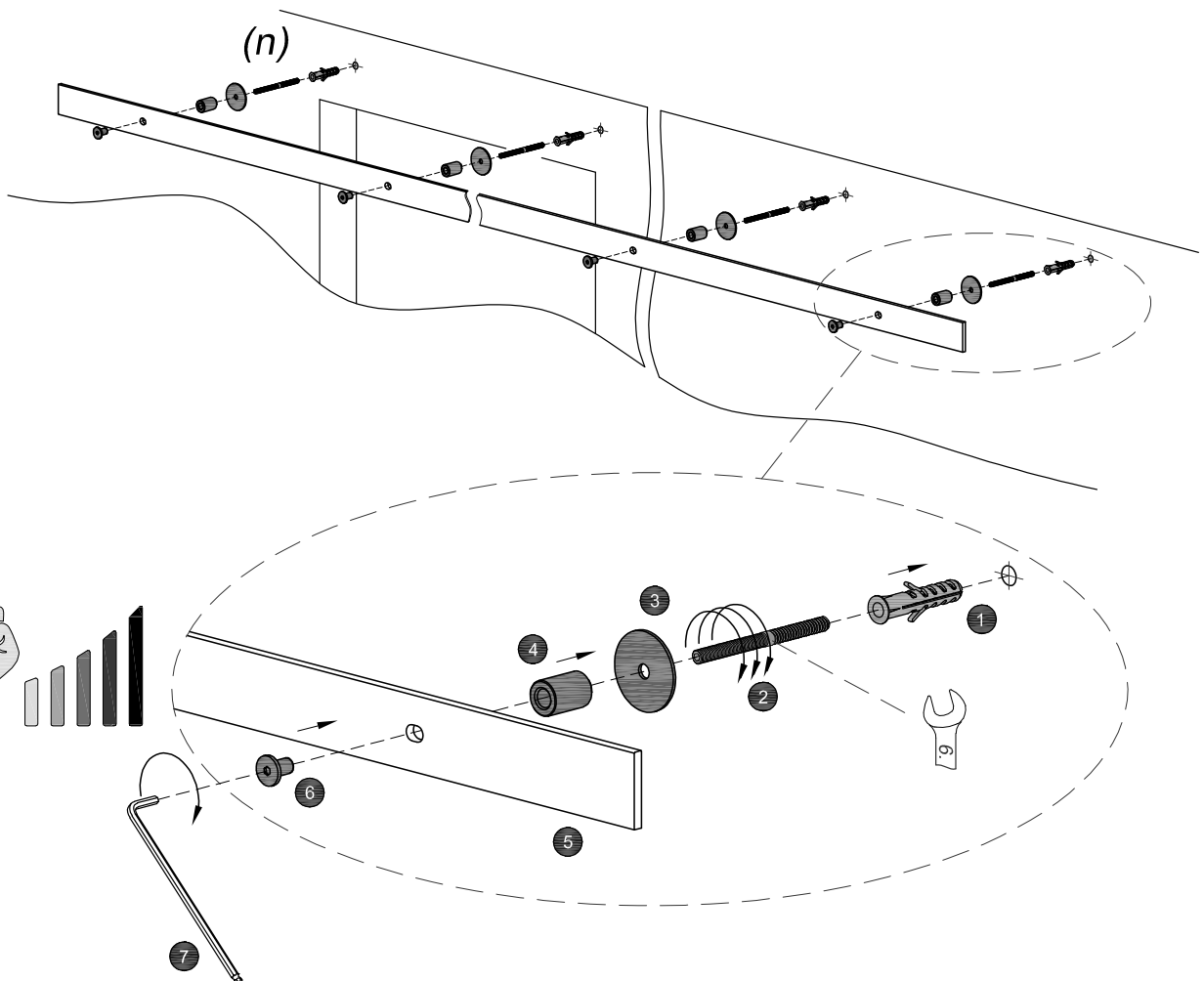
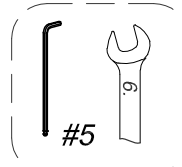
2



3

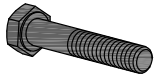


$x4/x5 = n$

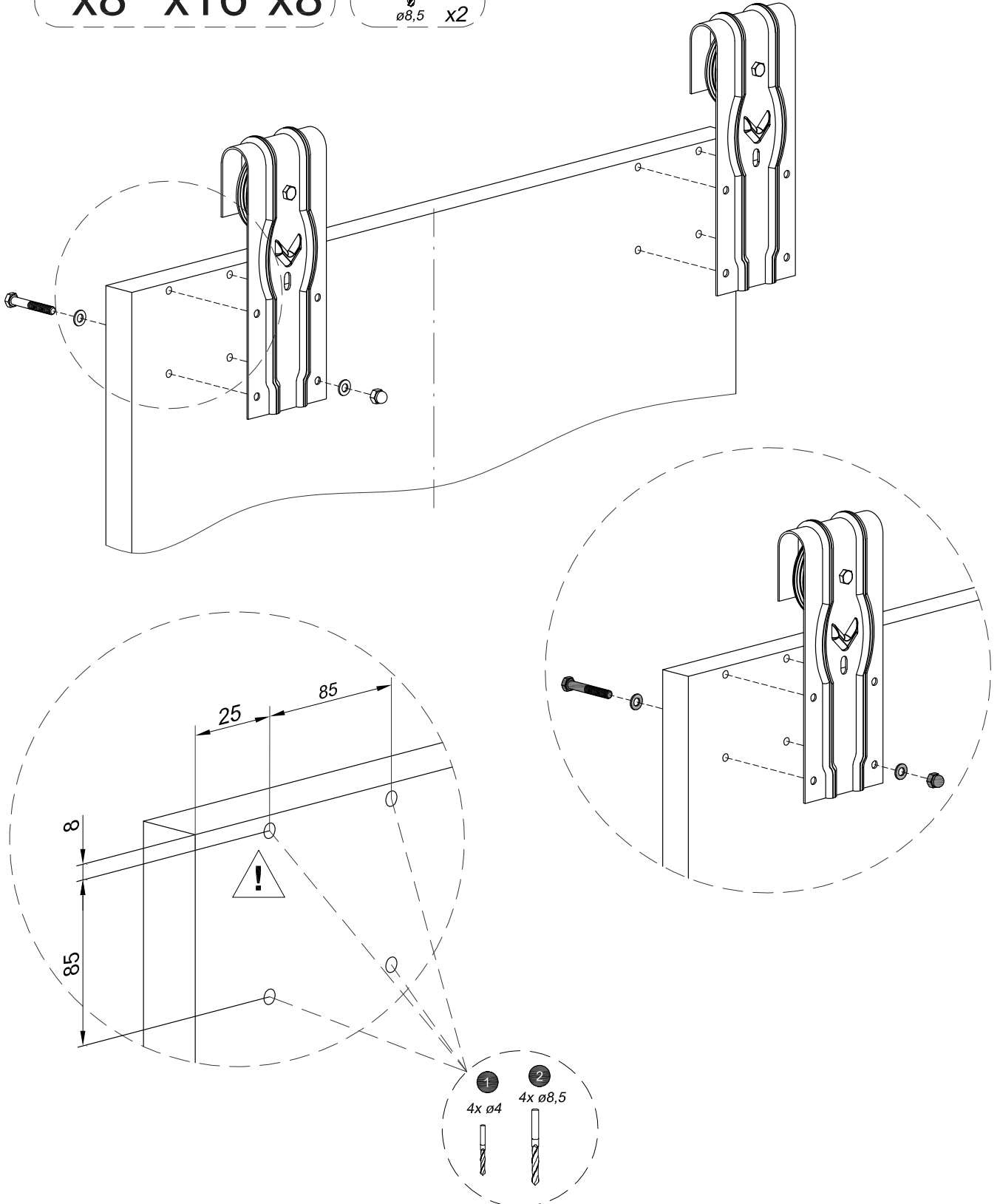
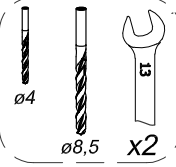




4

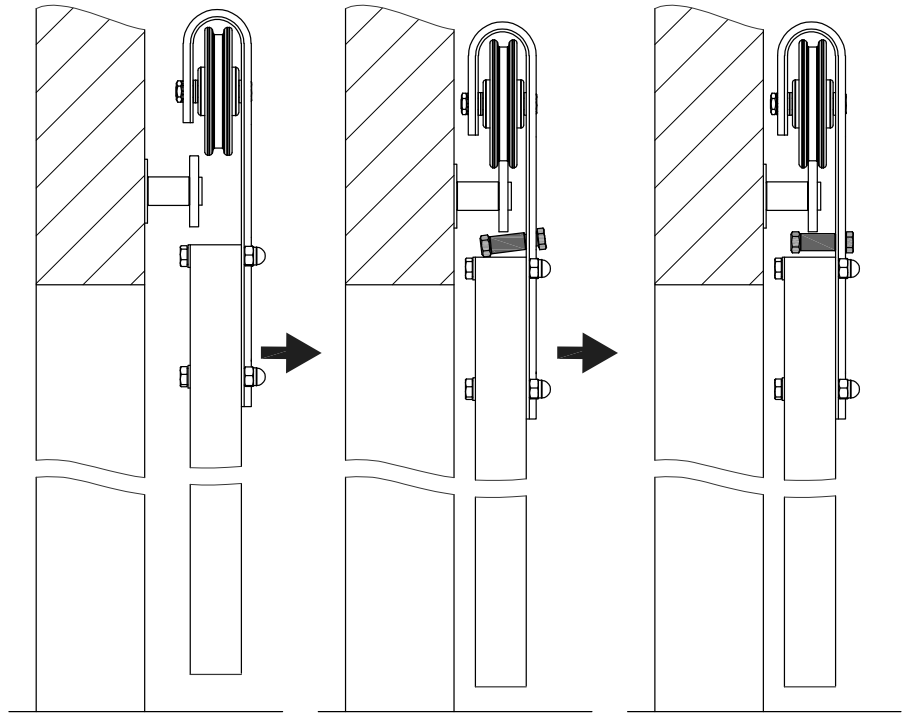
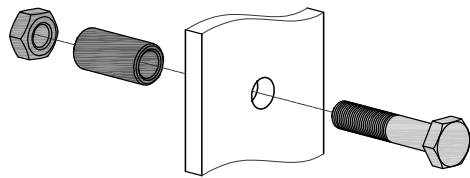
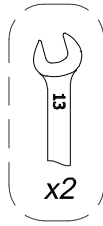
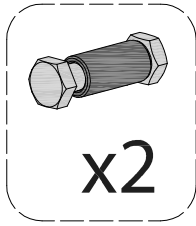


x8 x16 x8

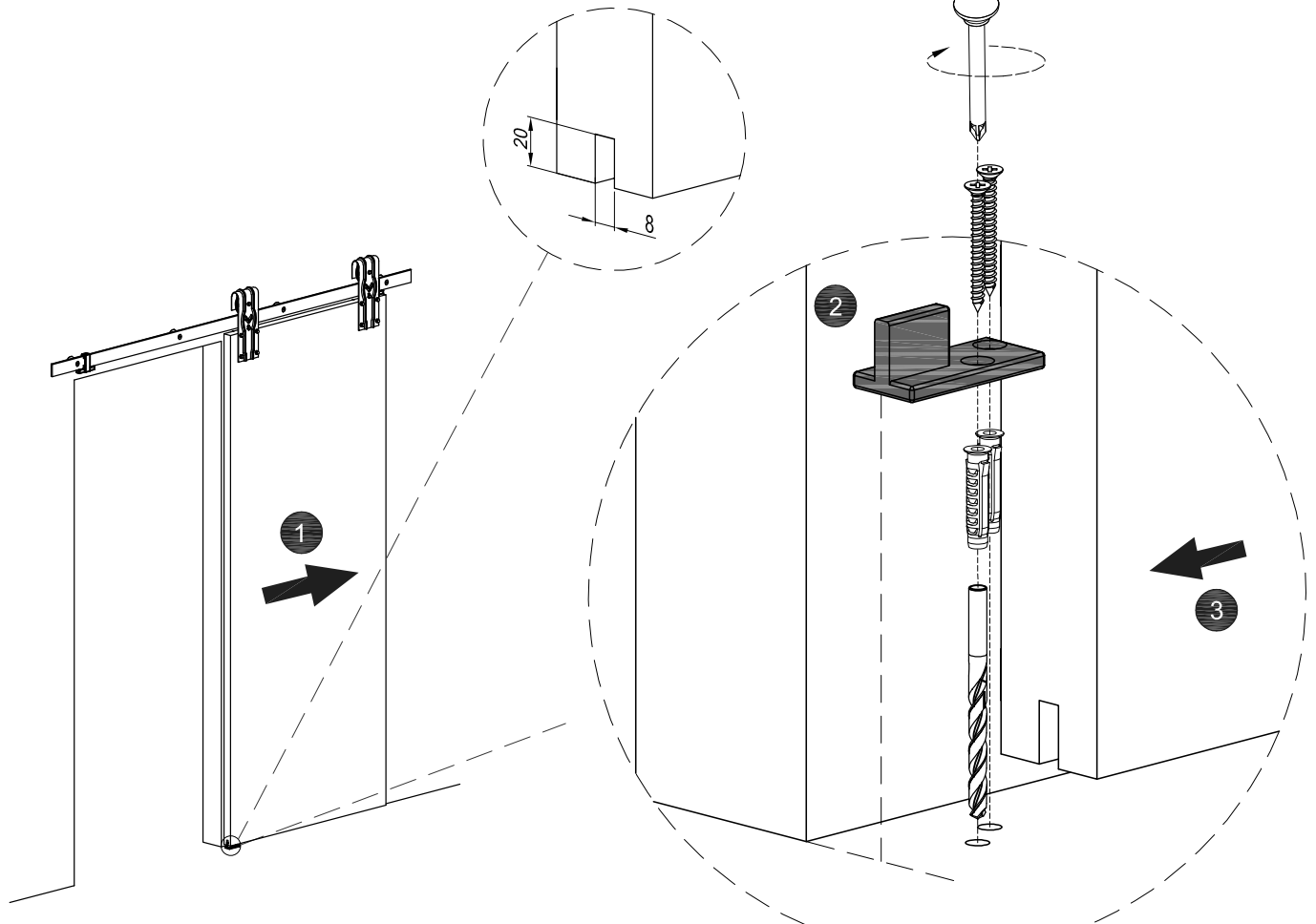
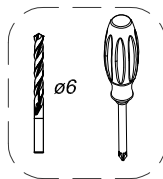
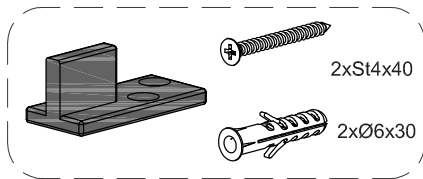




5



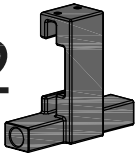
6



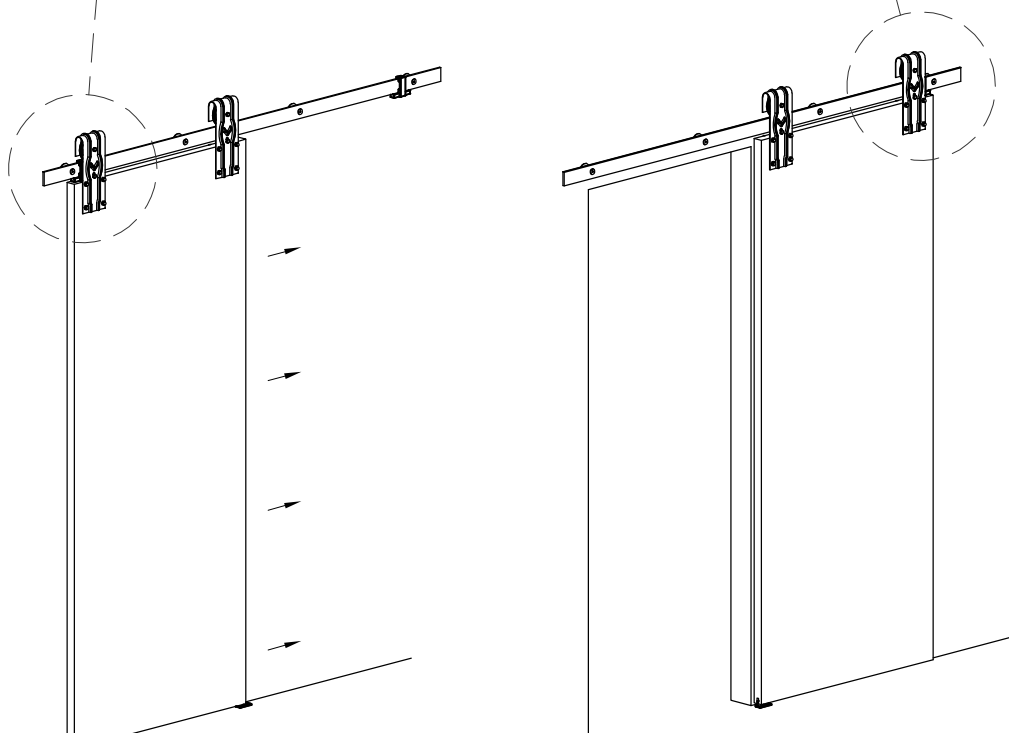
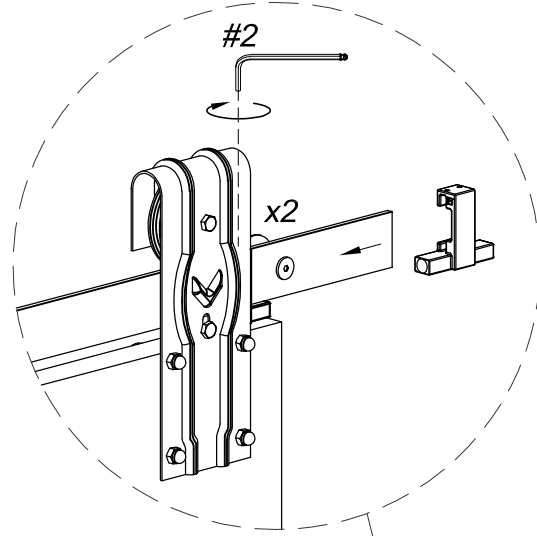
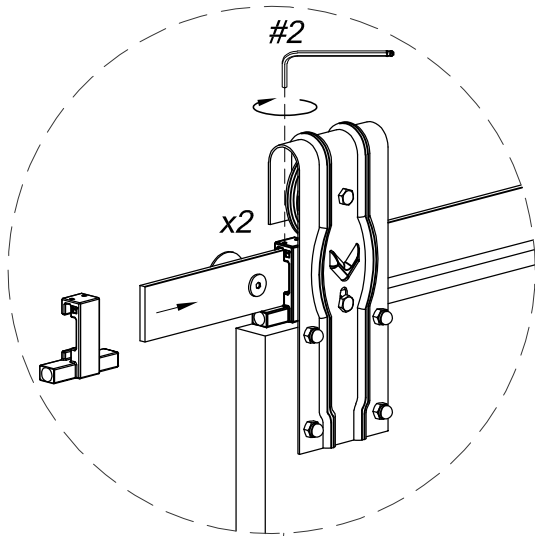
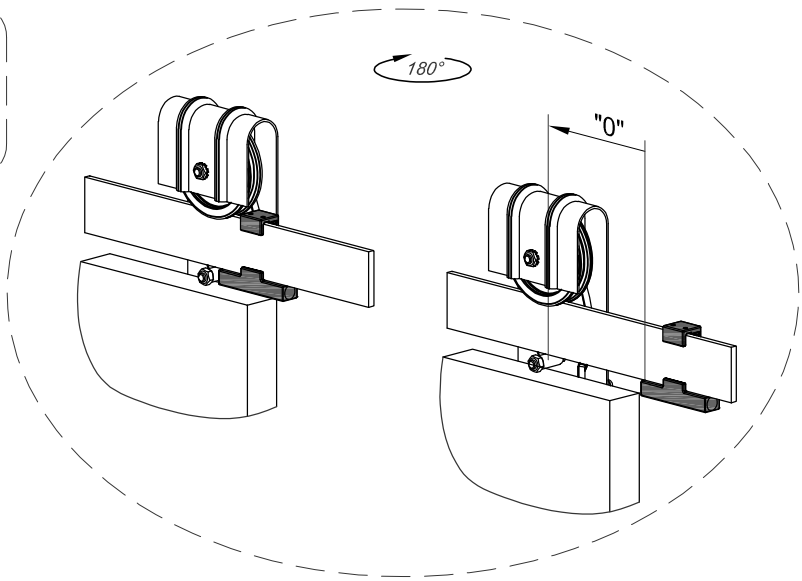


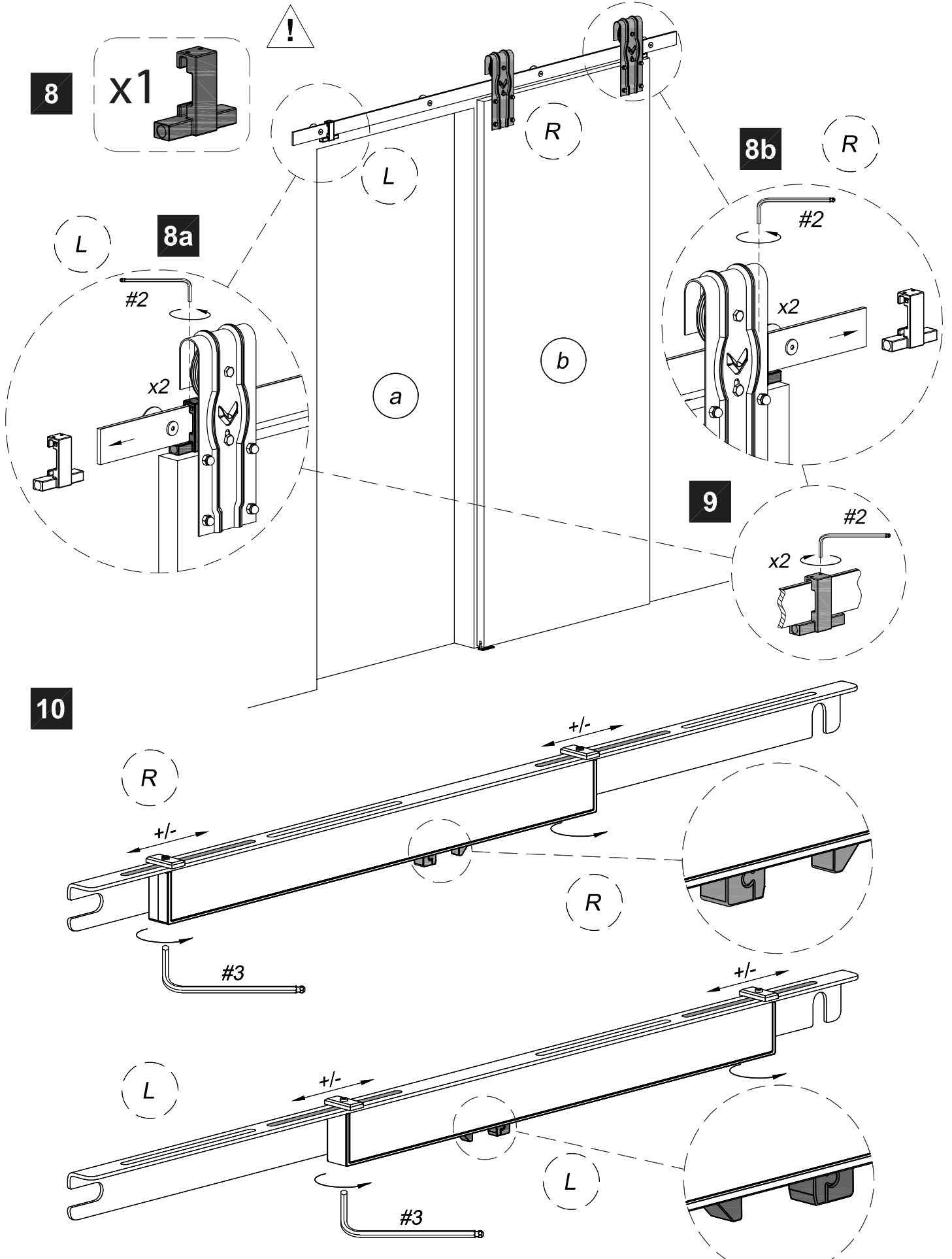
7

x2



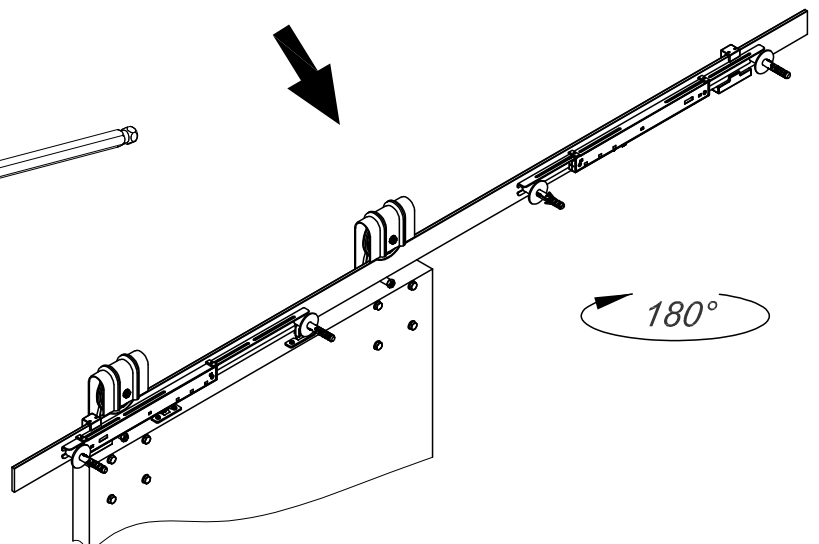
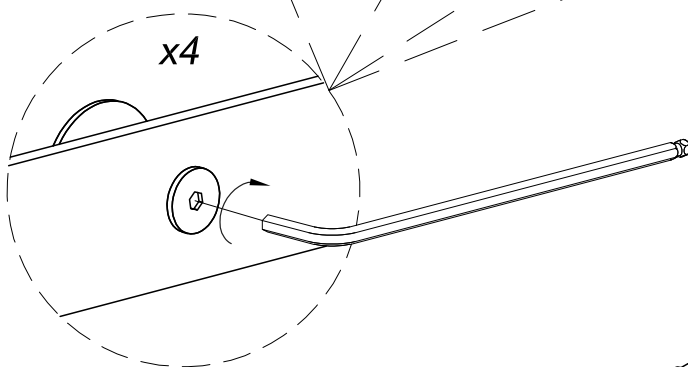
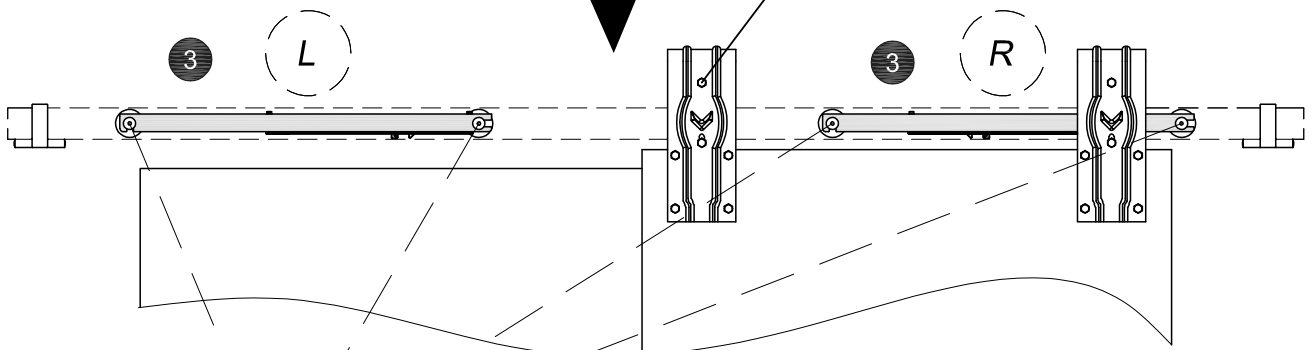
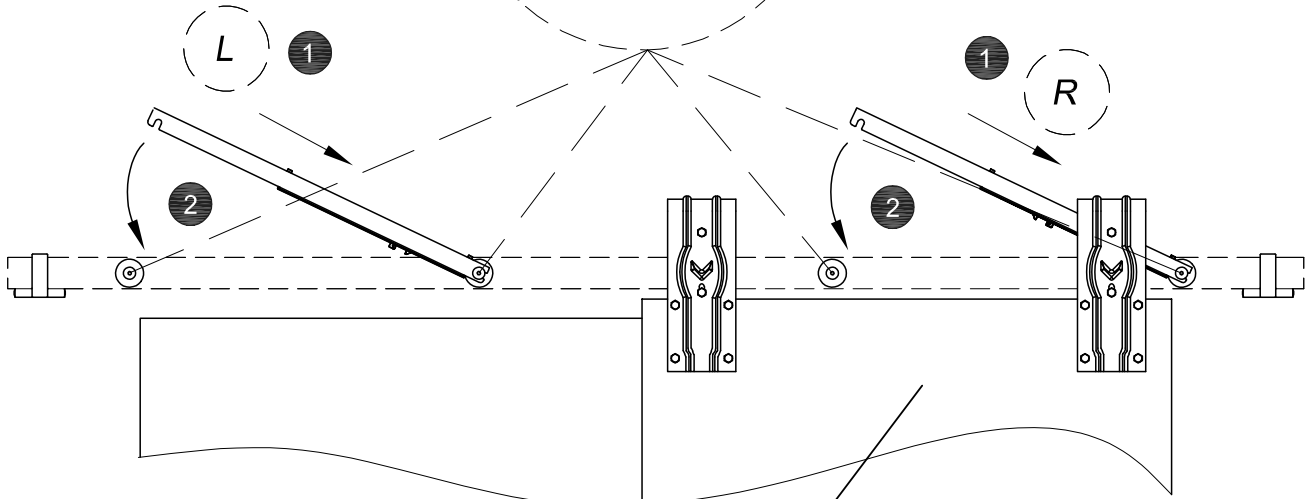
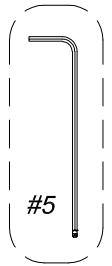
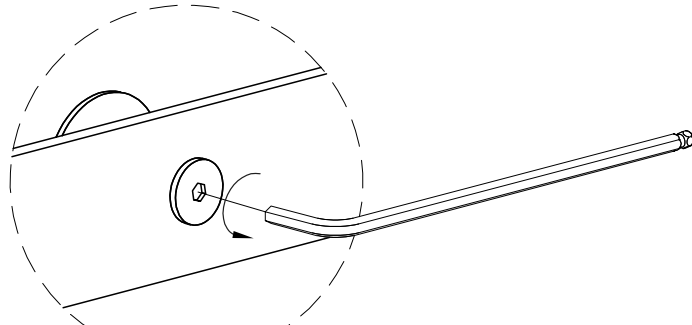
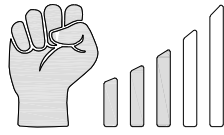
#2







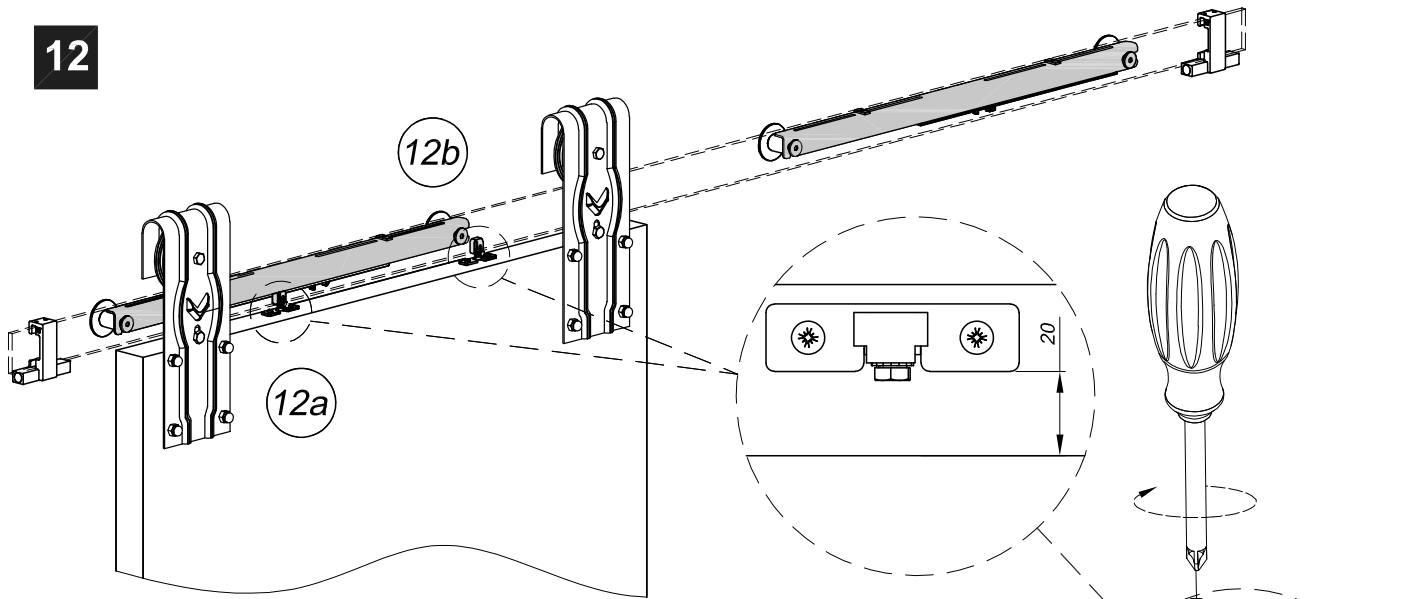
11



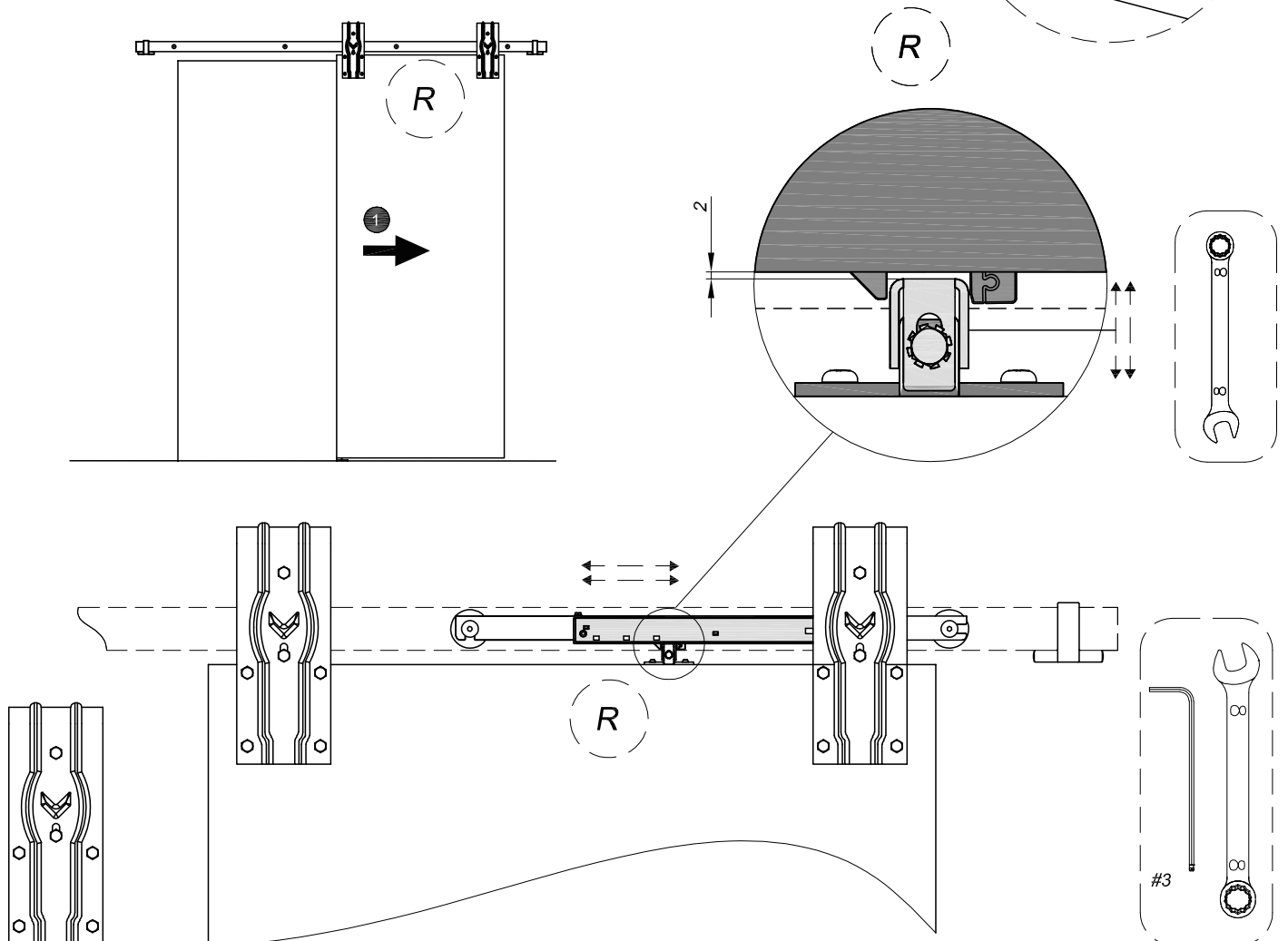




12



12a





12b

