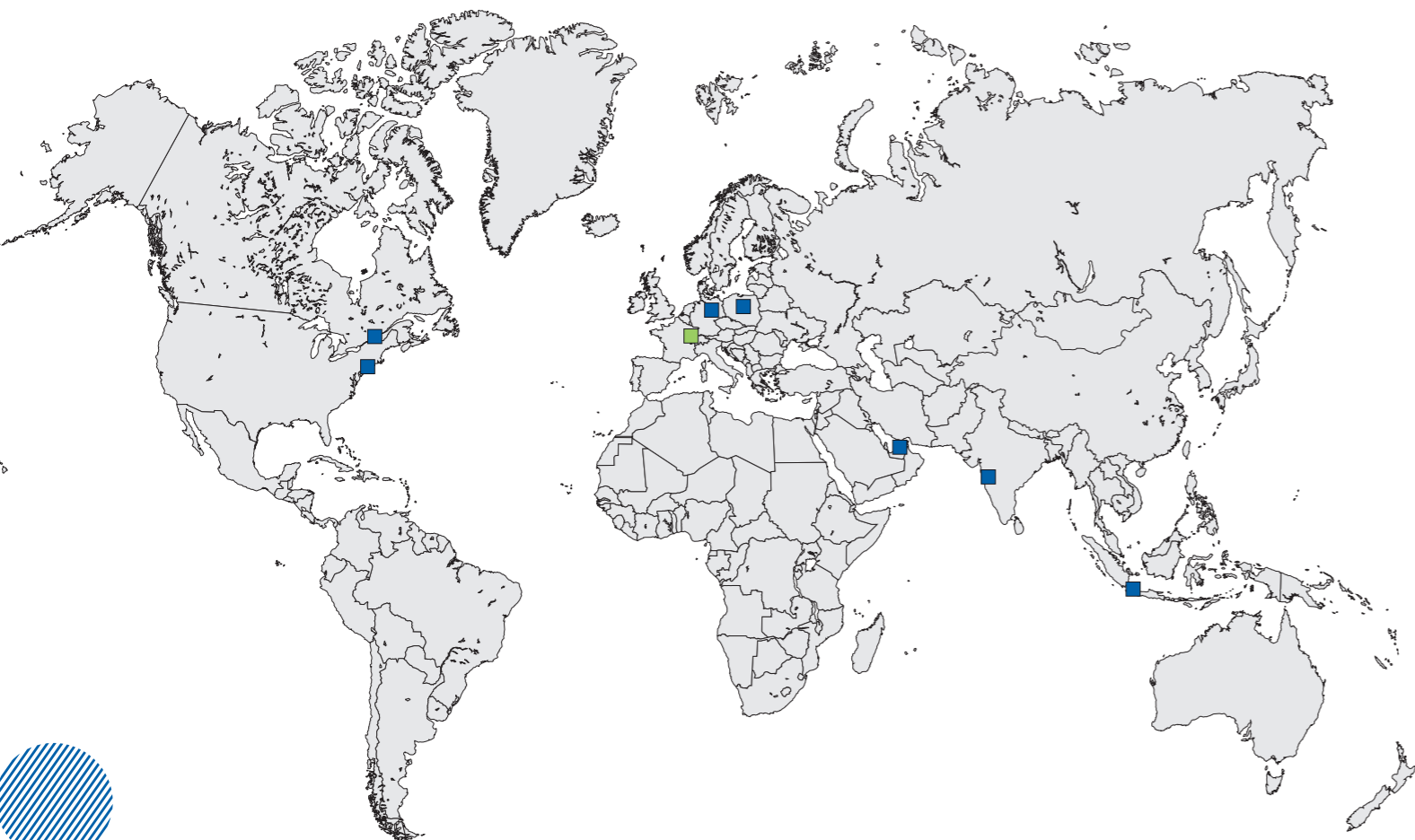




MANTION® SAS
 7 rue Gay Lussac | 25000 Besançon - FRANCE
 Tel. + 33 3 81 50 56 77 | Fax + 33 3 81 53 29 76
 Email: mantion@mantion.com



Germany | Austria

Germany / Austria
 Mantion Baubeschläge GMBH

Dieselstraße 18
 D-42579 Heiligenhaus
 Tel. + 49 2056 58 26 90
 Fax + 49 2056 58 26 99
 Email: info@mantion.de
www.mantion.de

Middle East

Middle East
 Dubai Branch Office

Jafza South, Unit no. S101 23 O 032,
 Jebel Ali Free Zone, Dubai, UAE
 Dubai & Bahrain: Tel. +971 56 174 58 44
 Rest of the Middle East: +971 56739 66 11
 Email: export@mantion.com
www.mantion.com

South-East Asia

South-East Asia
 Mantion South-East Asia

Sovereign Plaza Lantai 8 Unit D E
 Jl. TB Simatupang No.Kav. 36, Kec. Cilandak,
 Jakarta Selatan, 12430
 INDONESIA
 Email: export@mantion.com
www.mantion.com

Eastern Europe

Eastern Europe
 Mantion Polska

ul Boruty 2a
 PL-03 769 Warszawa
 Tel. + 48 22 818 77 22
 Fax + 48 22 818 99 78
 Email: biuro@valcomp.com.pl
www.valcomp.com.pl

India

India
 Mantion India Private Ltd

G-19, T.V. Estate, 248/A, S.K. Ahire Marg. Worli
 Mumbai - 400030. INDIA
 Mobile: +91 0 9819 30 38 78
 Email: support.india@mantion.com
www.mantion.com

North America

North America
 Mantion Canada

12-360 boul. Séminaire N
 Saint-Jean-sur-Richelieu
 Québec J3B 5L1
 Tel. + 1 (450) 529 1315
 Email: contact@mantion-na.com
www.mantion.ca

Mantion USA

10-34 44th Drive. 2nd Floor.
 Long Island City
 11101 NEW YORK
 Tel. + 1 (475) 289-0254
 Email: contact@mantion-us.com
www.mantion.us

OPENTEC - February 2023



OPENTEC®

Folding-sliding space dividers

Designer and manufacturer of sliding systems since 1920

www.mantion.com

DESIGNER AND MANUFACTURER OF SLIDING SYSTEMS SINCE 1920

Designer and manufacturer of sliding systems since 1920

OPENTEC®

FOLDING-SLIDING SYSTEM FOR DIVIDING SPACES & CREATING LARGE OPENINGS

The **OPENTEC** range offers a wide choice of systems to create flexible, flowing spaces and large openings onto the outside. Technically, the system is suitable for use with large-sized panels, whatever the material (steel, wood, aluminium, glass, etc.), to create movable partition walls and wide openings.



CHOOSING QUALITY

We have been designing and manufacturing sliding systems since 1920, and our systems meet the most demanding European standards: NF EN 1527:2019 - PR NF P26-341 NF EN 12045, etc. With its commitment to quality and durability, Manton offers every user the security of long warranties, up to 25 years on some products. All our systems are tested in approved laboratories to guarantee you the most reliable and longest lasting systems on the market. With Manton, enjoy the peace of mind that comes with reliable mechanisms.

SUSTAINABLE DEVELOPMENT: a long-standing commitment



MANTION cares about people and the environment, which is why we are so committed to sustainable development. It is a way for us to contribute seriously to protecting the planet's natural resources and improving quality of life. For the period from 2018 to 2020, MANTION's objectives were:

- to guarantee our customers the best possible delivery times.
- to reduce data entry times.
- to reduce the amount of paper we consume and therefore the volume of waste we produce.



As part of this general policy drive, MANTION has drawn up annual action plans and set continuous improvement targets, which it is committed to achieving. MANTION has devoted considerable resources to the implementation and management of these policies. They are driven and coordinated by the quality and environment manager, who reports directly to MANTION's top management. Finally, MANTION works actively to raise the awareness of its employees and partners to reinforce the effectiveness of these policies.

MANTION SAS 7, rue Gay Lussac / 25000 Besançon - France
Tel. +33 (0) 3 81 50 56 77 / Fax +33 (0) 3 81 53 29 76
export@mansion.com



PANELS WITH TIMBER JOINERY

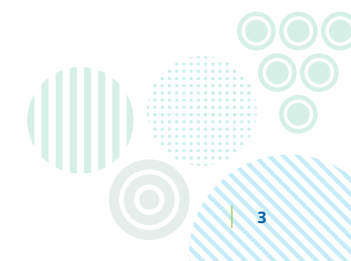
OPENTEC® FW75	p.4
OPENTEC® FWF100.....	p.8

PANELS WITH STEEL JOINERY

HERCULE® 9500 2M	p.12
OPENTEC® FMF100.....	p.16
OPENTEC® FMF150.....	p.20

FRAMELESS GLASS PANELS

OPENTEC® F80.....	p.24
-------------------	------



indoor use

OPENTEC® FW75 FOLDING-SLIDING SYSTEM FOR WOOD PANELS

+ EASY TO USE

- Panels slide smoothly and silently thanks to hangers with 4 nylon rollers mounted on ball bearings.
- Optional floor guide depending on the configuration.

+ SIMPLE TO INSTALL

- Installation defined by configurator.
- Level adjustable by nuts under the hangers.

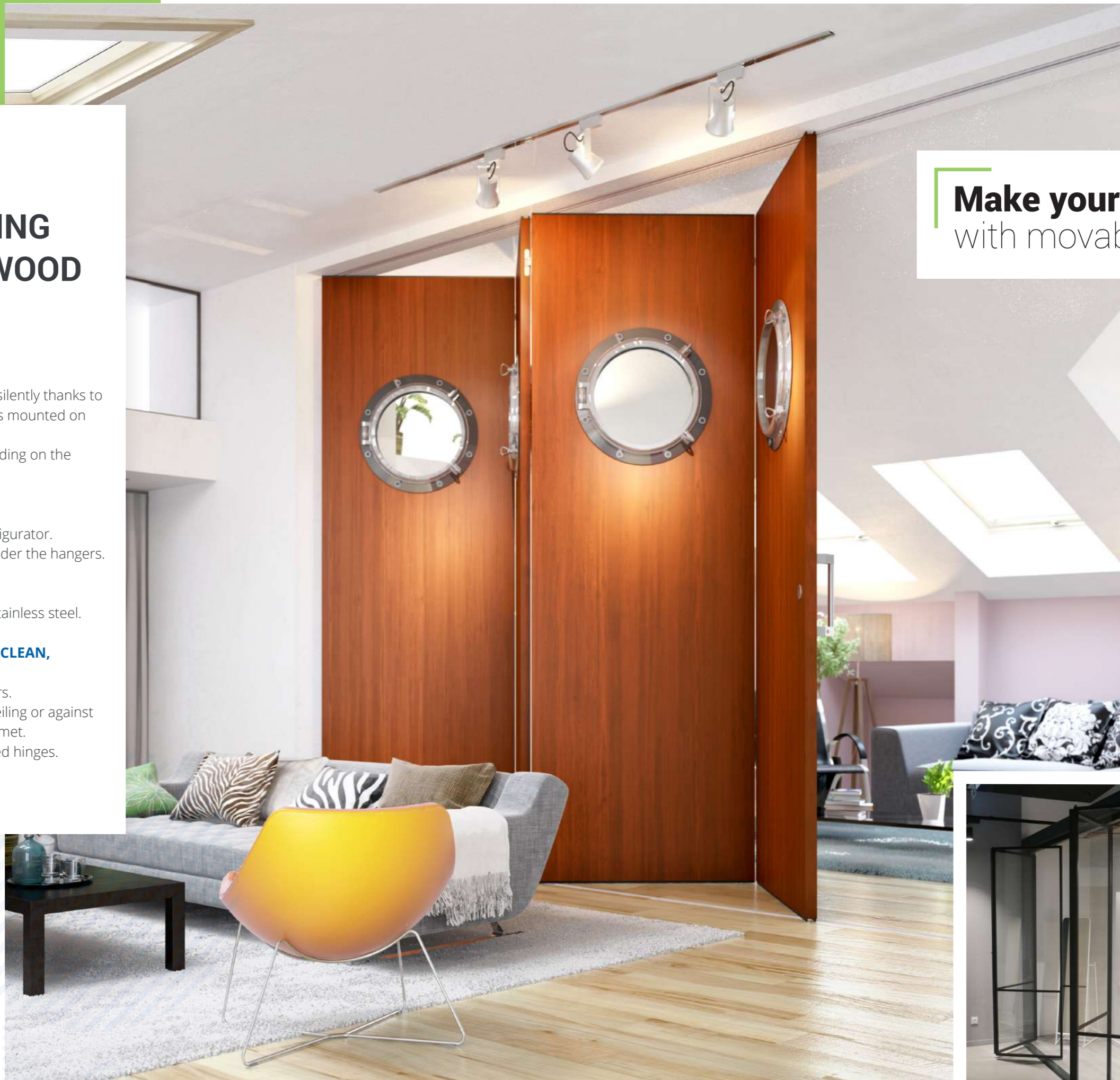
+ QUALITY MATERIALS

- Anodised aluminium and stainless steel.

+ AN ATTRACTIVE LOOK WITH CLEAN, SIMPLE LINES

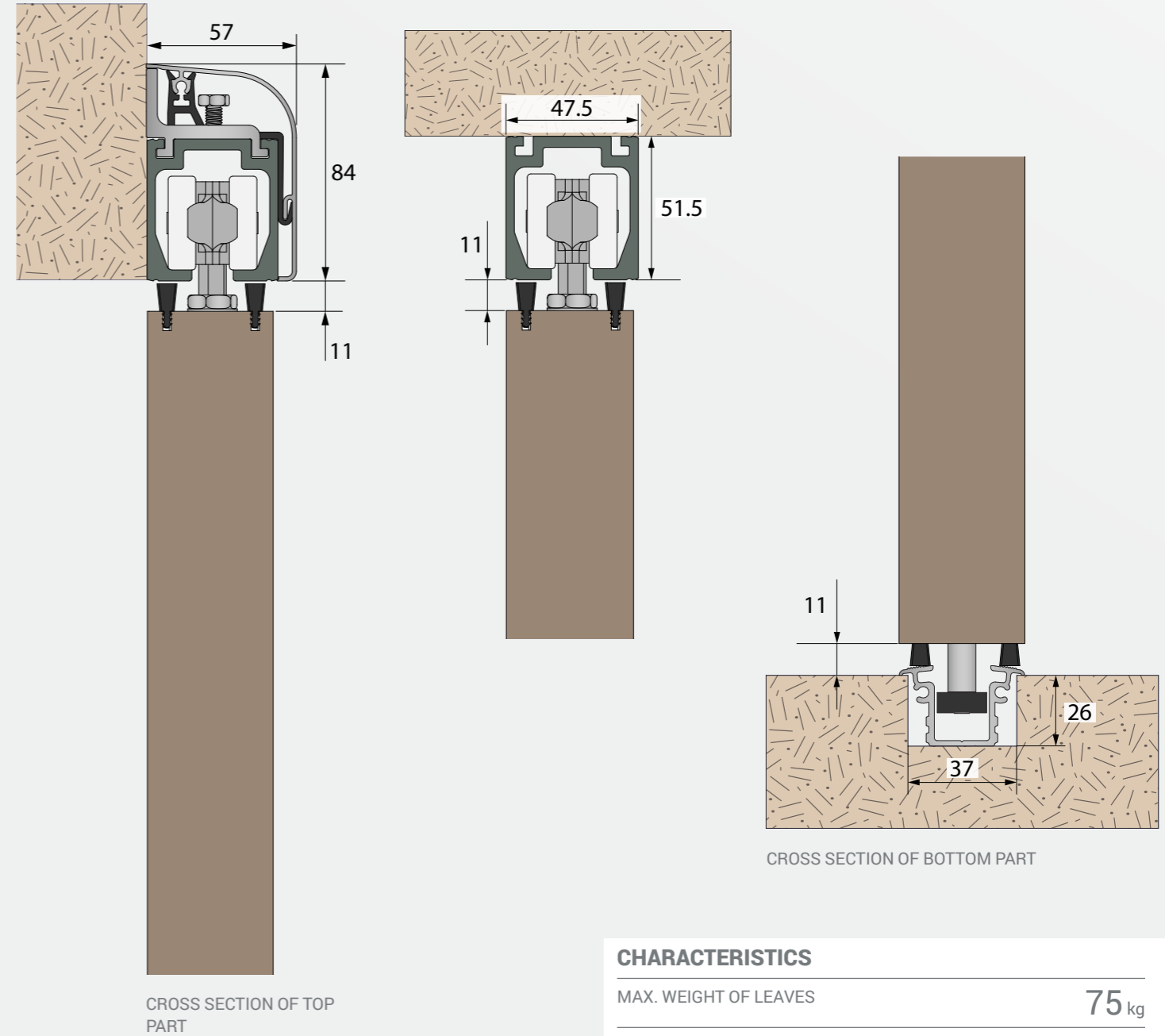
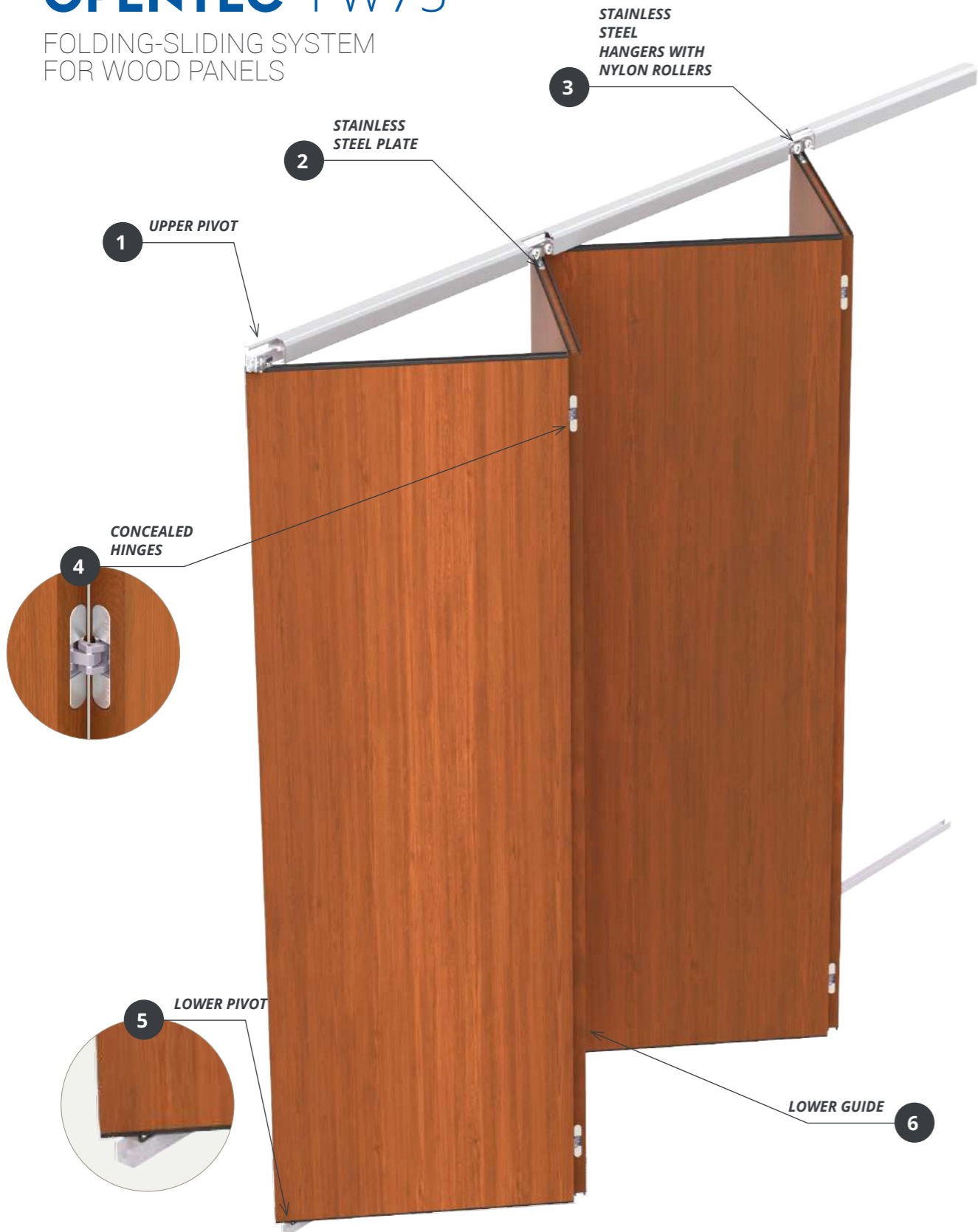
- A system for tall, sleek doors.
- Can be fitted flush in the ceiling or against the wall with a finishing pelmet.
- Panels linked with concealed hinges.

Make your space flexible
with movable dividers!



OPENTEC® FW75

FOLDING-SLIDING SYSTEM FOR WOOD PANELS



CHARACTERISTICS

MAX. WEIGHT OF LEAVES	75 kg
MAX. OPENING DIMENSIONS (W X H)	12 x 4 m
NUMBER OF PANELS	1 to 12 (6 + 6)
PANEL WIDTH	400 to 1000 mm
THICKNESS OF LEAVES	30 to 50 mm



SlidSoft
match up your projects

ONLINE CALCULATION

Estimating the cost of your project is easy! Simply enter the dimensions of your opening and your chosen options. You will also have access to the full details of the products and plans.

www.mantion.com



outdoor use

OPENTEC® FWF100

FOLDING-SLIDING SYSTEM FOR GLAZED OPENINGS WITH TIMBER JOINERY

+ EASY TO USE

- Panels slide smoothly and silently thanks to hangers with 4 vertical nylon rollers and 4 horizontal nylon rollers mounted on ball bearings.

+ SIMPLE TO INSTALL

- Installation defined by configurator.
- Manufacturing drawings provided for the panels for each configuration.

+ QUALITY MATERIALS

- Anodised aluminium and stainless steel.

**+ AN ATTRACTIVE LOOK WITH CLEAN,
SIMPLE LINES**

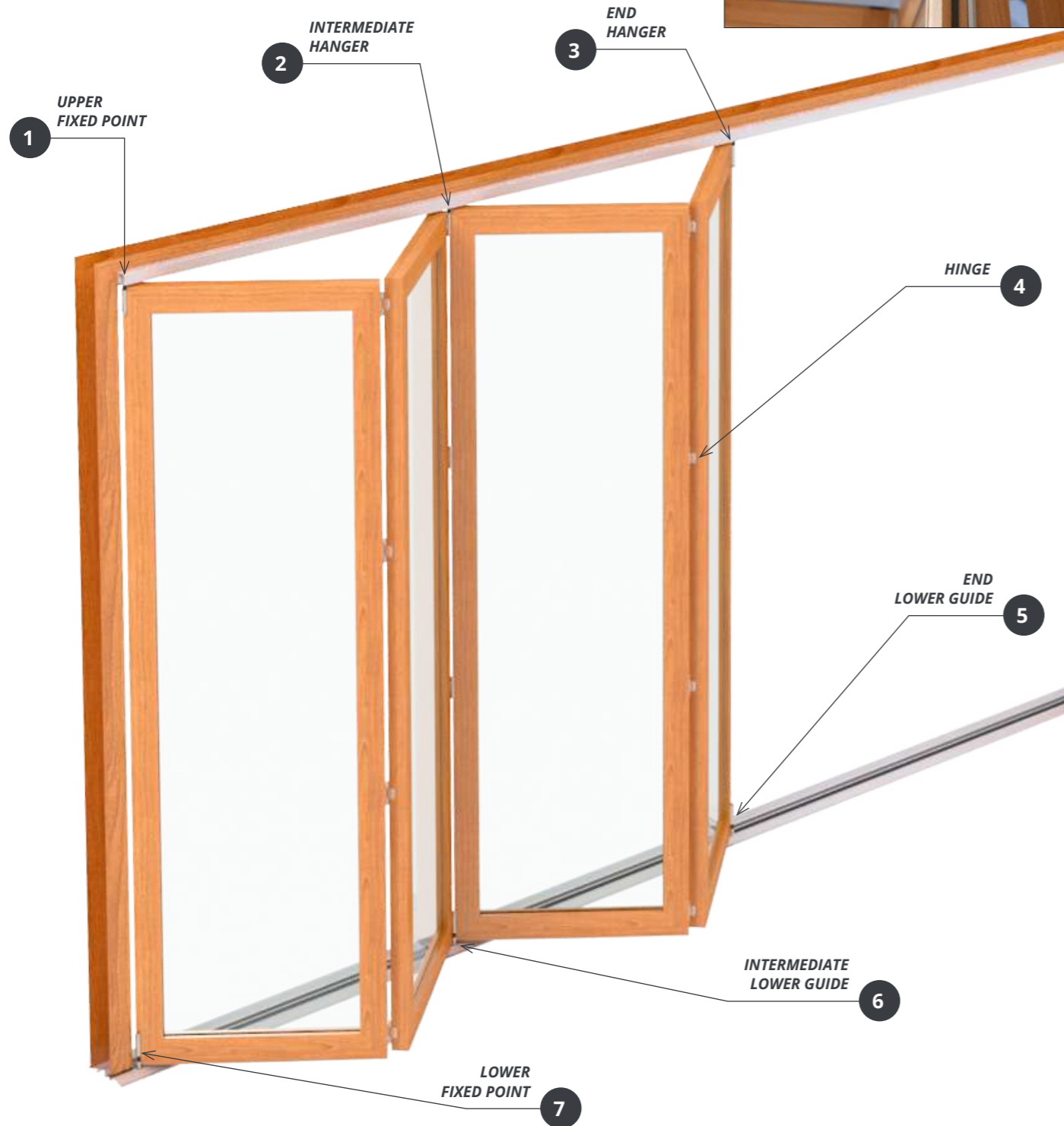
- A system for tall, sleek doors.
- Can be fitted flush in the ceiling or against the wall with a finishing pelmet.
- Integrated 2 and 3-point locking.
- Flush threshold lower guide with anti-pollution seal, approved for disabled access.

Ideal system for **tightly sealed glazed openings with timber joinery**



OPENTEC® FWF100

FOLDING-SLIDING SYSTEM
FOR GLAZED OPENINGS WITH
TIMBER JOINERY



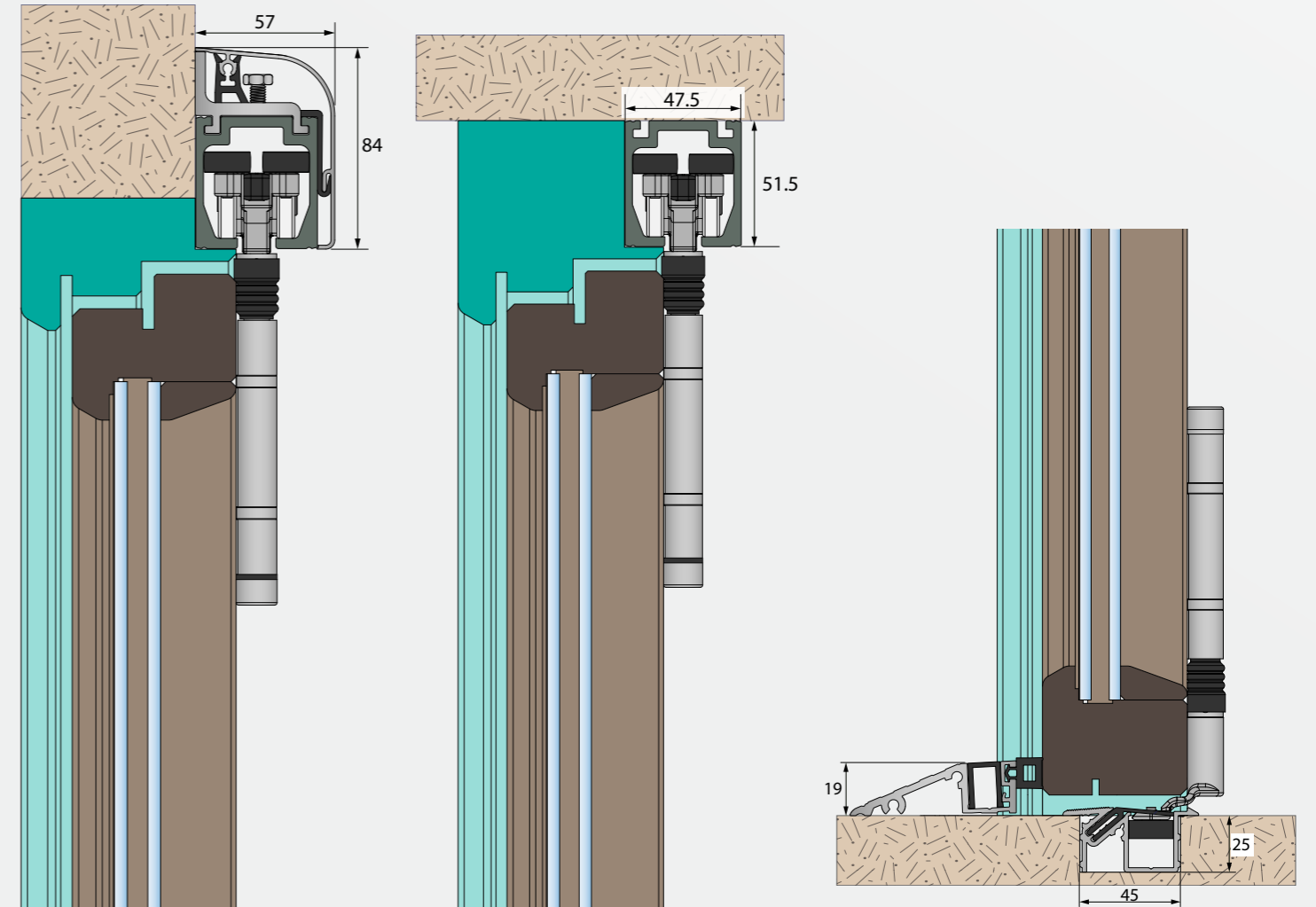
SlidSoft
match up your projects

MANTION
SLIDING SYSTEMS

ONLINE CALCULATION

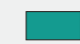


Estimating the cost of your project is easy! Simply enter the dimensions of your opening and your chosen options. You will also have access to the full details of the products and plans.

www.mantion.com



CROSS SECTION OF TOP PART

CROSS SECTION OF BOTTOM PART (FLUSH THRESHOLD)

 FRAME
 LEAF
 GLASS



CHARACTERISTICS

MAX. WEIGHT OF LEAVES	100 kg
MAX. OPENING DIMENSIONS (W X H)	16.5 x 3.5 m
NUMBER OF LEAVES	3 to 15 (7+8)
WIDTH OF LEAVES	500 to 1100 mm
THICKNESS OF LEAVES	58 to 100 mm

outdoor use

HERCULE® 9500 2M

FOLDING-SLIDING SYSTEM FOR GLAZED OPENING WITH STEEL JOINERY ECONOMY VERSION

- + **ECONOMY VERSION**
 - Enjoy MANTION quality for less
- + **EASY TO USE**
 - Hangers equipped with nylon-coated precision ball bearings.
- + **PRM compatible**
 - Threshold compatible with PRM access.

For conservatories,
patios, shops, etc.



HERCULE® 9500 2M

FOLDING-SLIDING SYSTEM
FOR GLAZED OPENINGS WITH STEEL JOINERY
ECONOMY VERSION



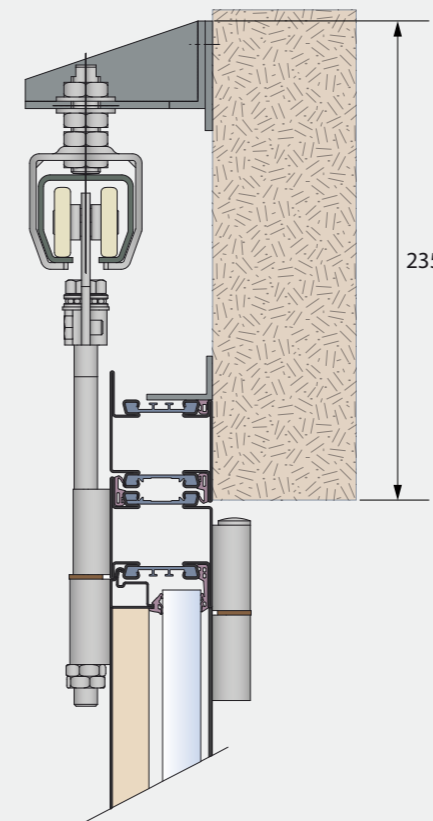
SlidSoft
match up your projects

MANTION
SLIDING SYSTEMS

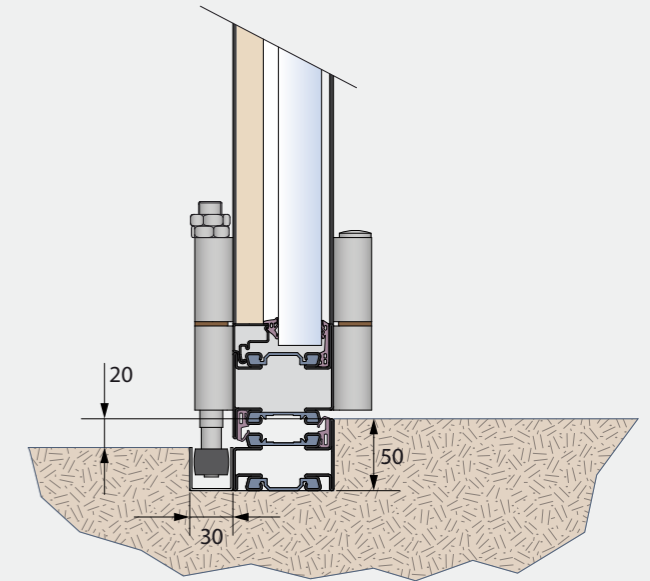
ONLINE CALCULATION

Estimating the cost of your project is easy! Simply enter the dimensions of your opening and your chosen options. You will also have access to the full details of the products and plans.

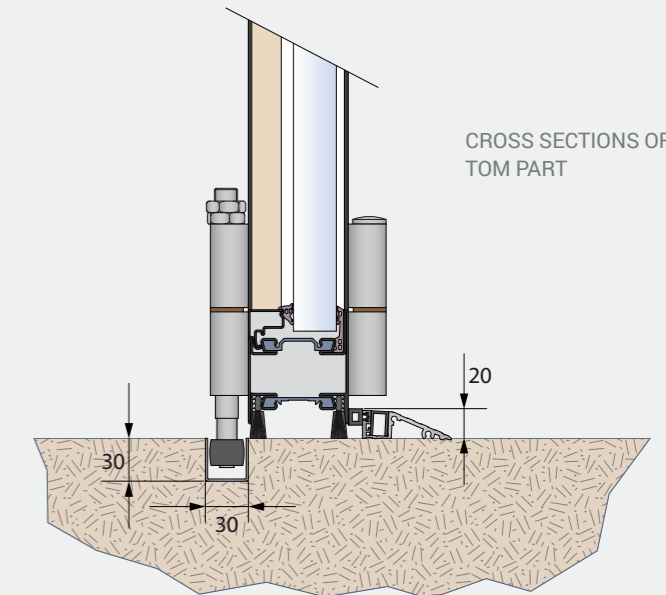
www.mantion.com



CROSS SECTION OF TOP PART



CROSS SECTIONS OF BOTTOM PART



CHARACTERISTICS

MAX. WEIGHT PER HANGER*	150 kg
MAX. OPENING DIMENSIONS (L)	6 m
NUMBER OF LEAVES	6 (3 + 3)
MAX. WIDTH OF LEAVES	900 mm
THICKNESS OF LEAVES	20 to 100 mm

* In a configuration with an odd number of panels, the hanger takes the weight of two panels



outdoor use

OPENTEC[®] FMF100

FOLDING-SLIDING SYSTEM FOR GLAZED OPENINGS WITH SLIM-PROFILE STEEL JOINERY

+ EASY TO USE

- Panels slide smoothly and silently thanks to hangers with 4 vertical nylon rollers and 4 horizontal nylon rollers mounted on ball bearings.
- Designed for thermally broken dividers.

+ SIMPLE TO INSTALL

- Installation defined by configurator.
- Manufacturing drawings provided for the panels for each configuration.

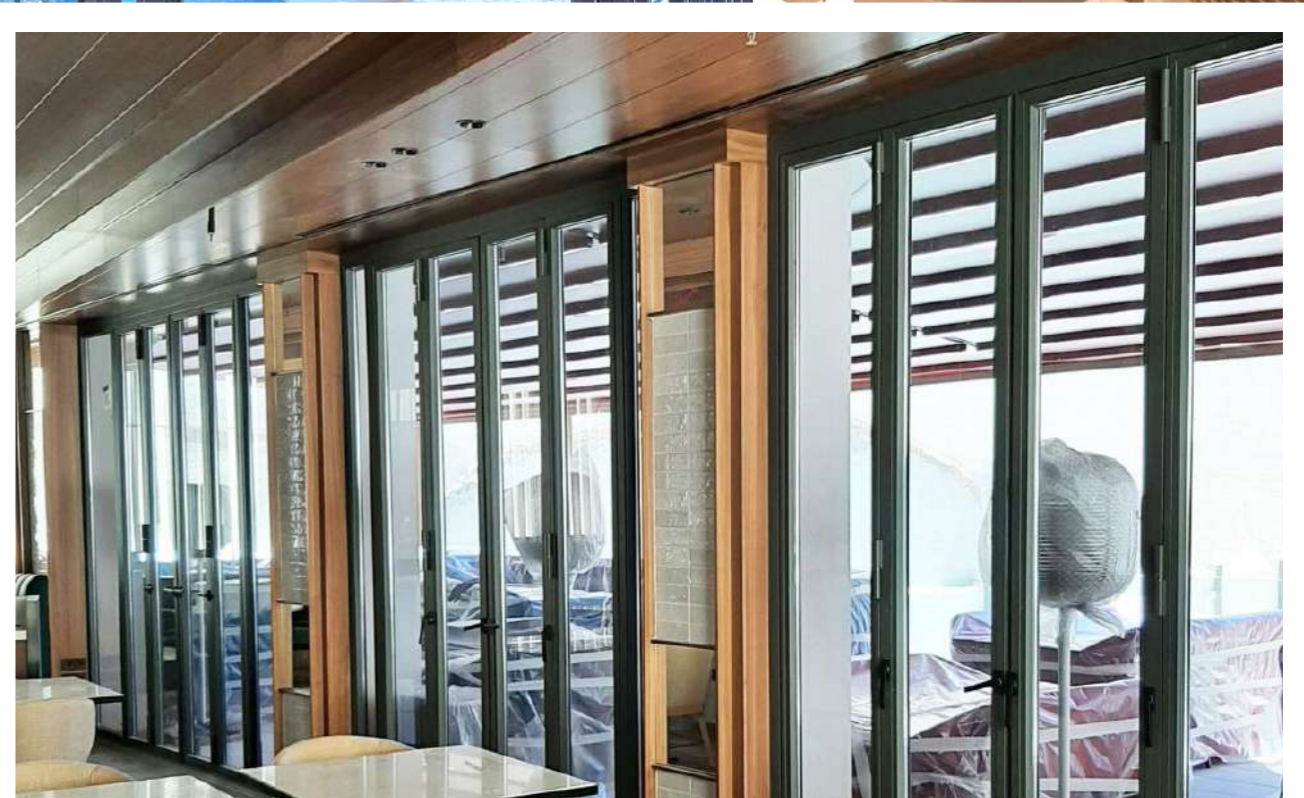
+ QUALITY MATERIALS

- Anodised aluminium and stainless steel.

+ AN ATTRACTIVE LOOK WITH CLEAN, SIMPLE LINES

- Tall, sleek system with minimalist split hinges and steel frame.
- Can be fitted under the ceiling or wall-mounted with a finishing pelmet.
- Integrated 2 and 3-point locking.
- Flush threshold lower guide with anti-pollution seal, approved for disabled access.

Unique design
thanks to its very
slim profiles



OPENTEC® FMF100

FOLDING-SLIDING SYSTEM
FOR GLAZED OPENINGS WITH
SLIM-PROFILE STEEL JOINERY

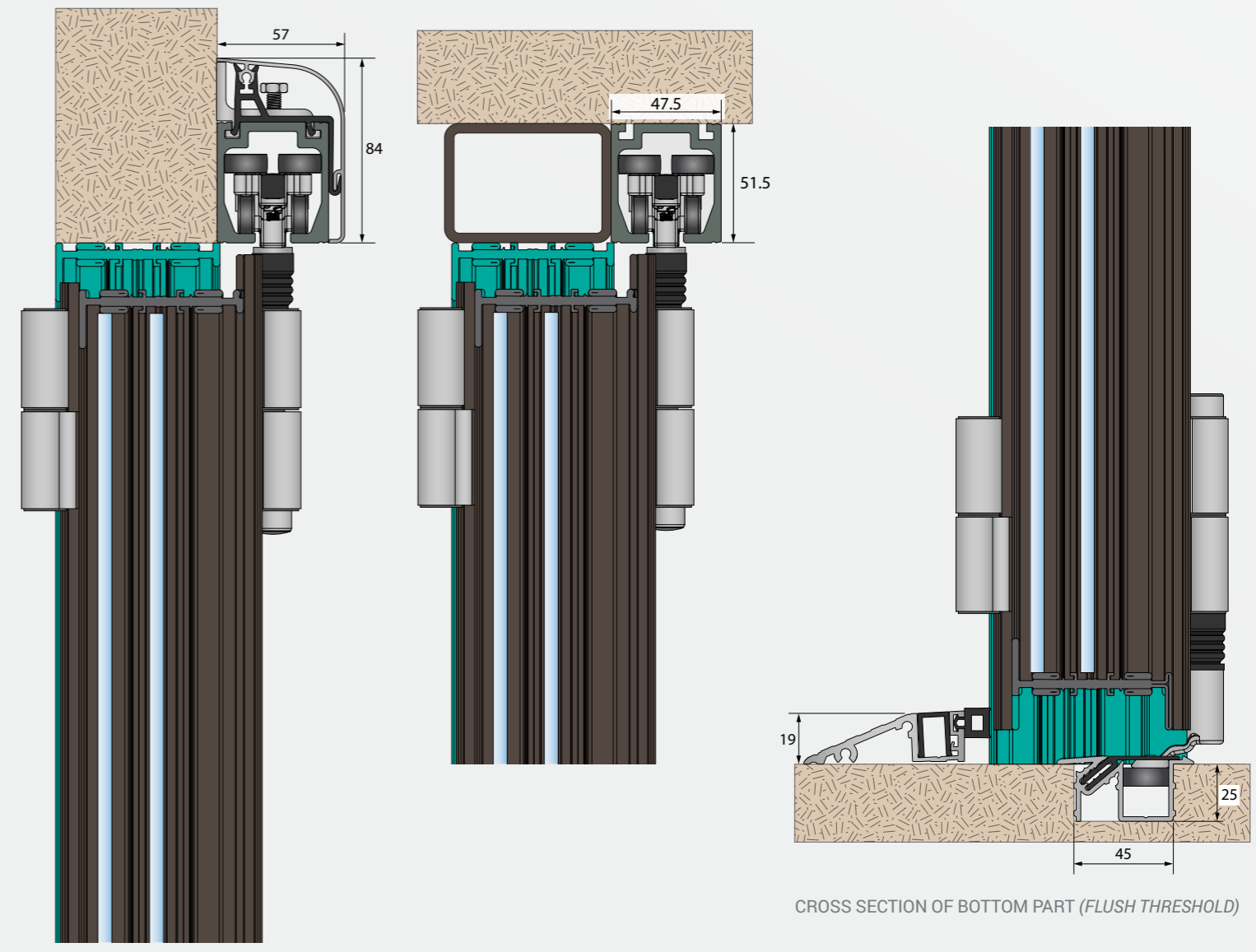
SlidSoft
match up your projects

MANTION
SLIDING SYSTEMS

ONLINE CALCULATION

Estimating the cost of your project is easy! Simply enter the dimensions of your opening and your chosen options. You will also have access to the full details of the products and plans.

www.mantion.com



FRAME
LEAF
GLASS



CHARACTERISTICS

MAX. WEIGHT OF LEAVES	100 kg
MAX. OPENING DIMENSIONS (W X H)	6 x 2.4 m
NUMBER OF LEAVES	3 to 8 (3+5)
WIDTH OF LEAVES	500 to 1000 mm
THICKNESS OF LEAVES	50 to 70 mm



outdoor use

OPENTEC® FMF150

FOLDING-SLIDING SYSTEM FOR GLAZED OPENINGS WITH STEEL JOINERY

+ EASY TO USE

- Panels slide smoothly and silently thanks to hangers with 4 vertical nylon rollers and 4 horizontal nylon rollers mounted on ball bearings.
- Designed for thermally broken dividers.

+ SIMPLE TO INSTALL

- Installation defined by configurator for panels up to 150 kg max.
- Drawings provided for the manufacturing of the panels for each configuration.

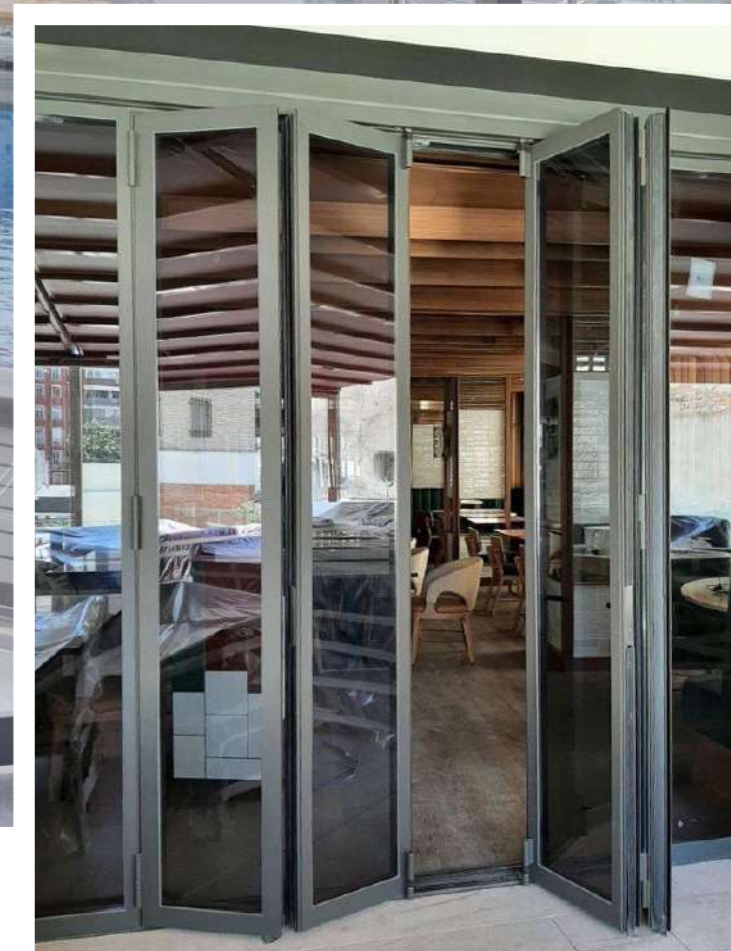
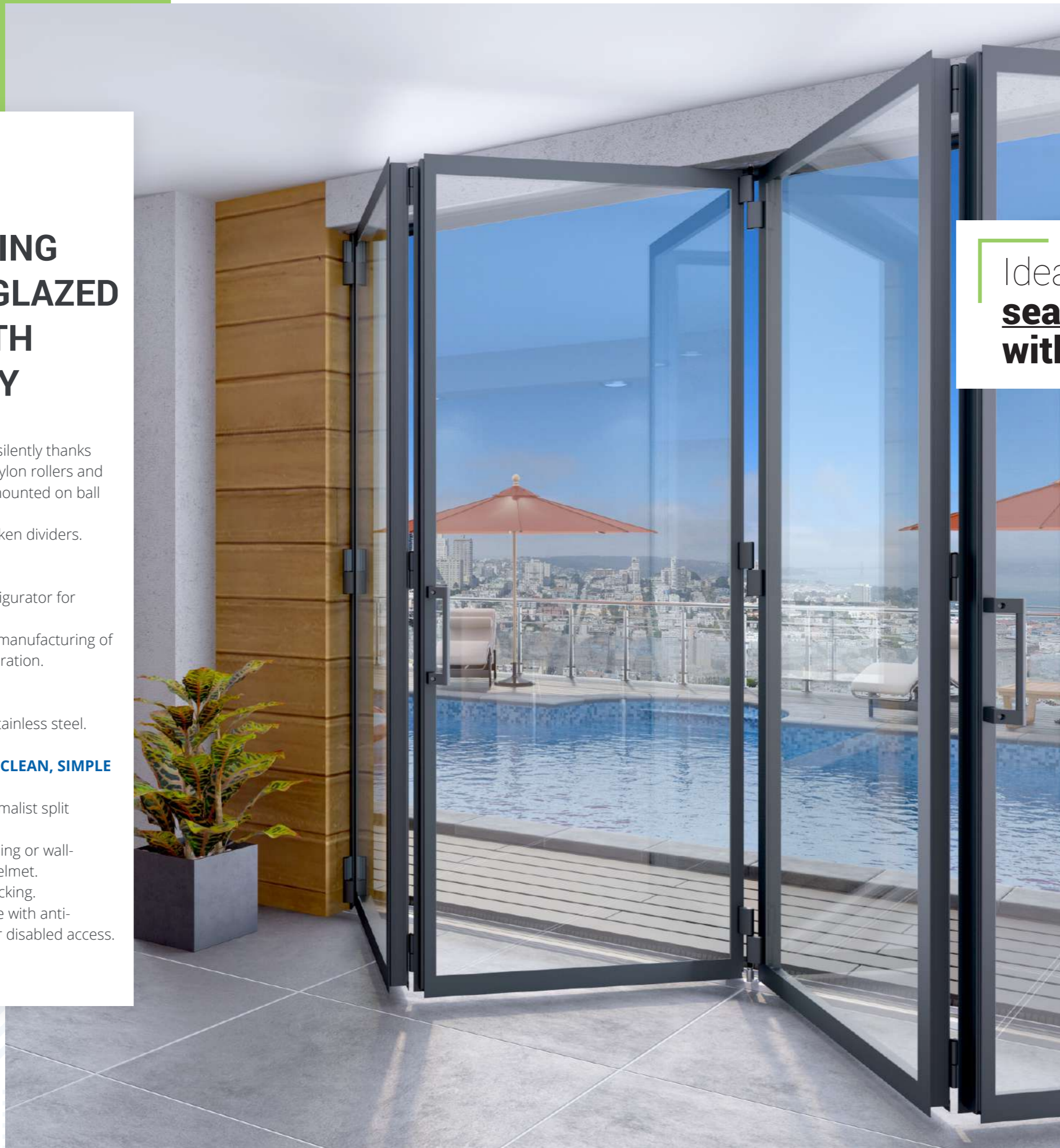
+ QUALITY MATERIALS

- Anodised aluminium and stainless steel.

+ AN ATTRACTIVE LOOK WITH CLEAN, SIMPLE LINES

- Tall, sleek system with minimalist split hinges and steel frame.
- Can be fitted under the ceiling or wall-mounted with a finishing pelmet.
- Integrated 2 and 3-point locking.
- Flush threshold lower guide with anti-pollution seal, approved for disabled access.

Ideal system for **tightly sealed glazed openings with steel joinery**



OPENTEC® FMF150

FOLDING-SLIDING SYSTEM
FOR GLAZED OPENINGS WITH
STEEL JOINERY

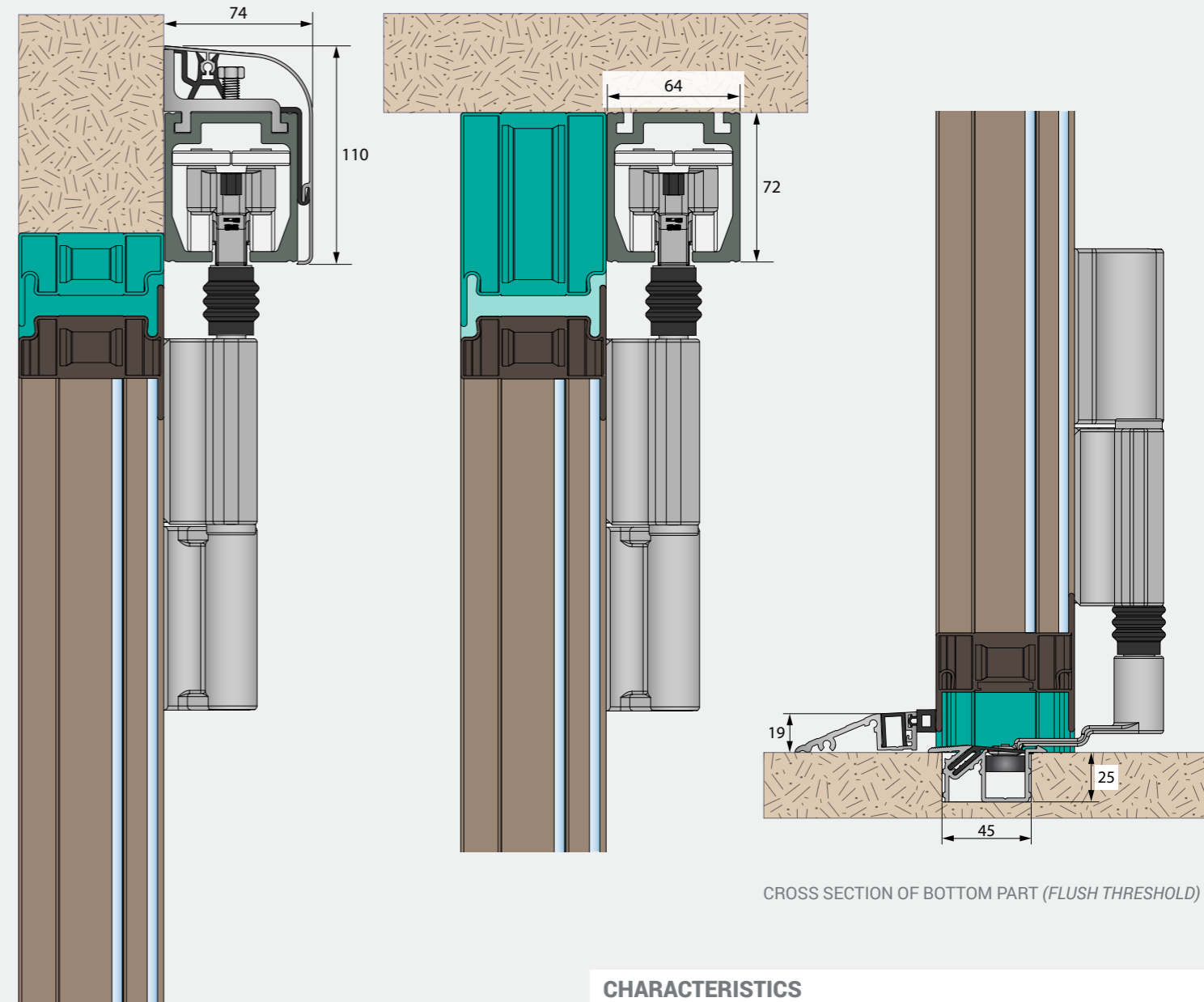
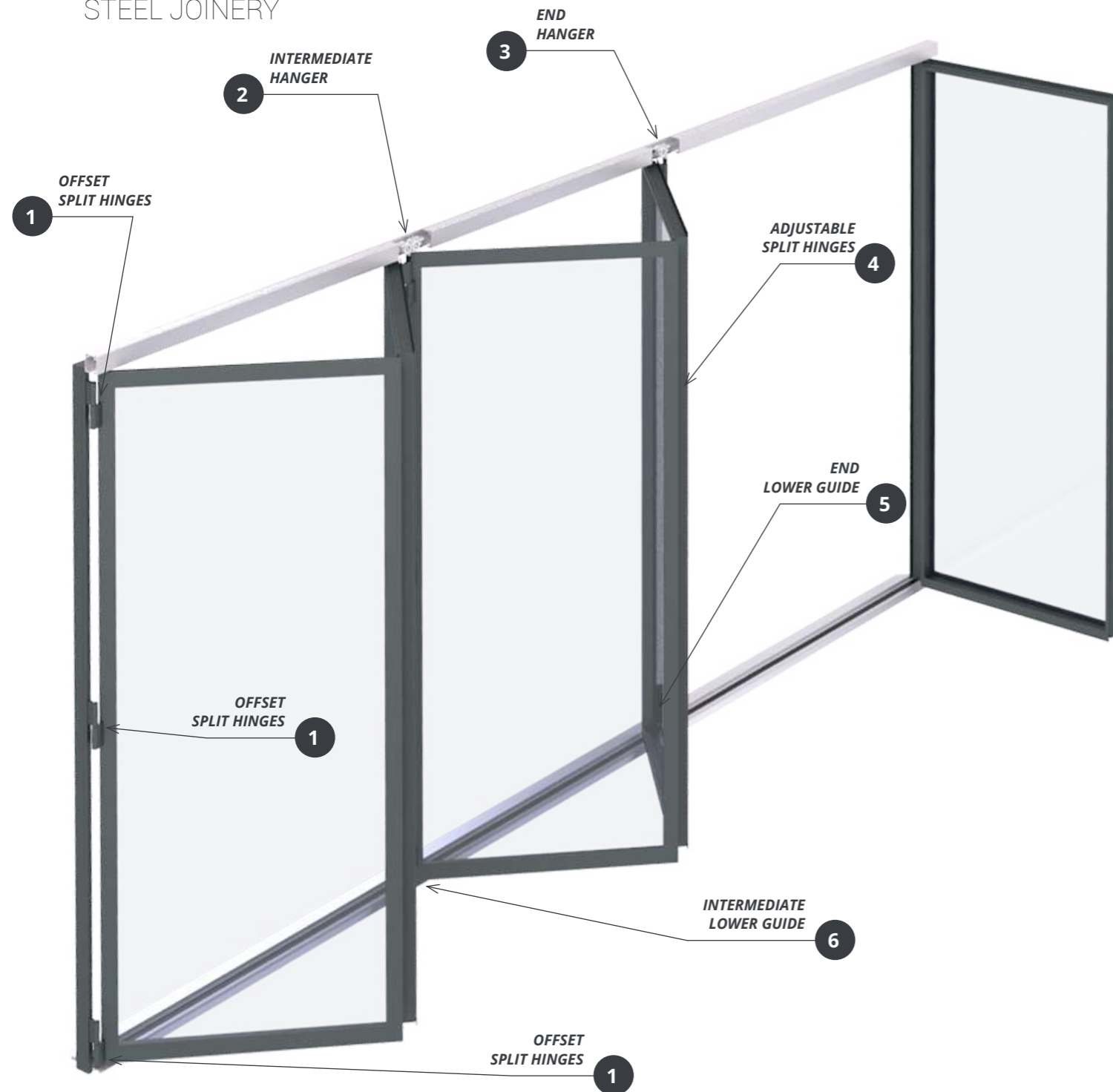
SlidSoft
match up your projects

MANTION
SLIDING SYSTEMS

ONLINE CALCULATION

Estimating the cost of your project is easy! Simply enter the dimensions of your opening and your chosen options. You will also have access to the full details of the products and plans.

www.mantion.com



CROSS SECTION OF TOP PART

CROSS SECTION OF BOTTOM PART (FLUSH THRESHOLD)

- FRAME
- LEAF
- GLASS



CHARACTERISTICS

MAX. WEIGHT OF LEAVES	150 kg
MAX. OPENING DIMENSIONS (W X H)	16.5 x 3.5 m
NUMBER OF LEAVES	3 to 15 (7+8)
WIDTH OF LEAVES	500 to 1100 mm
THICKNESS OF LEAVES	50 to 85 mm



indoor use

OPENTEC® F80 FOLDING-SLIDING SYSTEM FOR FRAMELESS GLASS ROOM DIVIDERS

+ EASY TO USE

- Panels slide smoothly and silently thanks to hangers with 4 vertical nylon rollers and 4 horizontal nylon rollers mounted on ball bearings.
- Designed for frameless glass installations.

+ SIMPLE TO INSTALL

- Installation defined by configurator for glass panels.
- Manufacturing drawings provided for the panels for each configuration.
- Easy-to-install and adjust system for clamped, non-machined glass panels.

+ QUALITY MATERIALS

- Anodised aluminium and stainless steel.

+ AN ATTRACTIVE LOOK WITH CLEAN, SIMPLE LINES

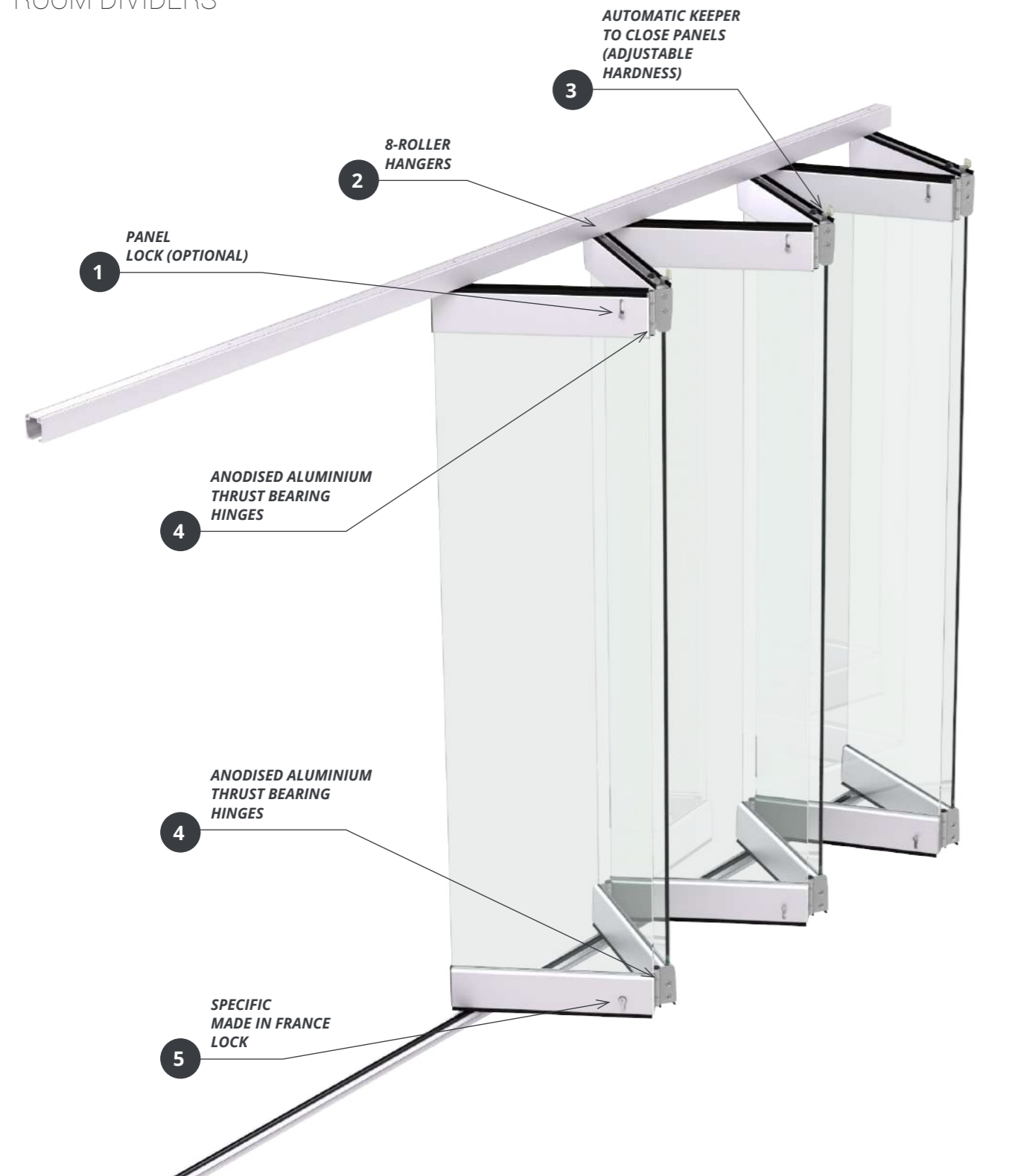
- No visible hinges.
- Flush threshold lower guide approved for disabled access.

Reliable, secure and
easy-to-install
system.



OPENTEC® F80

FOLDING-SLIDING SYSTEM
FOR FRAMELESS GLASS
ROOM DIVIDERS



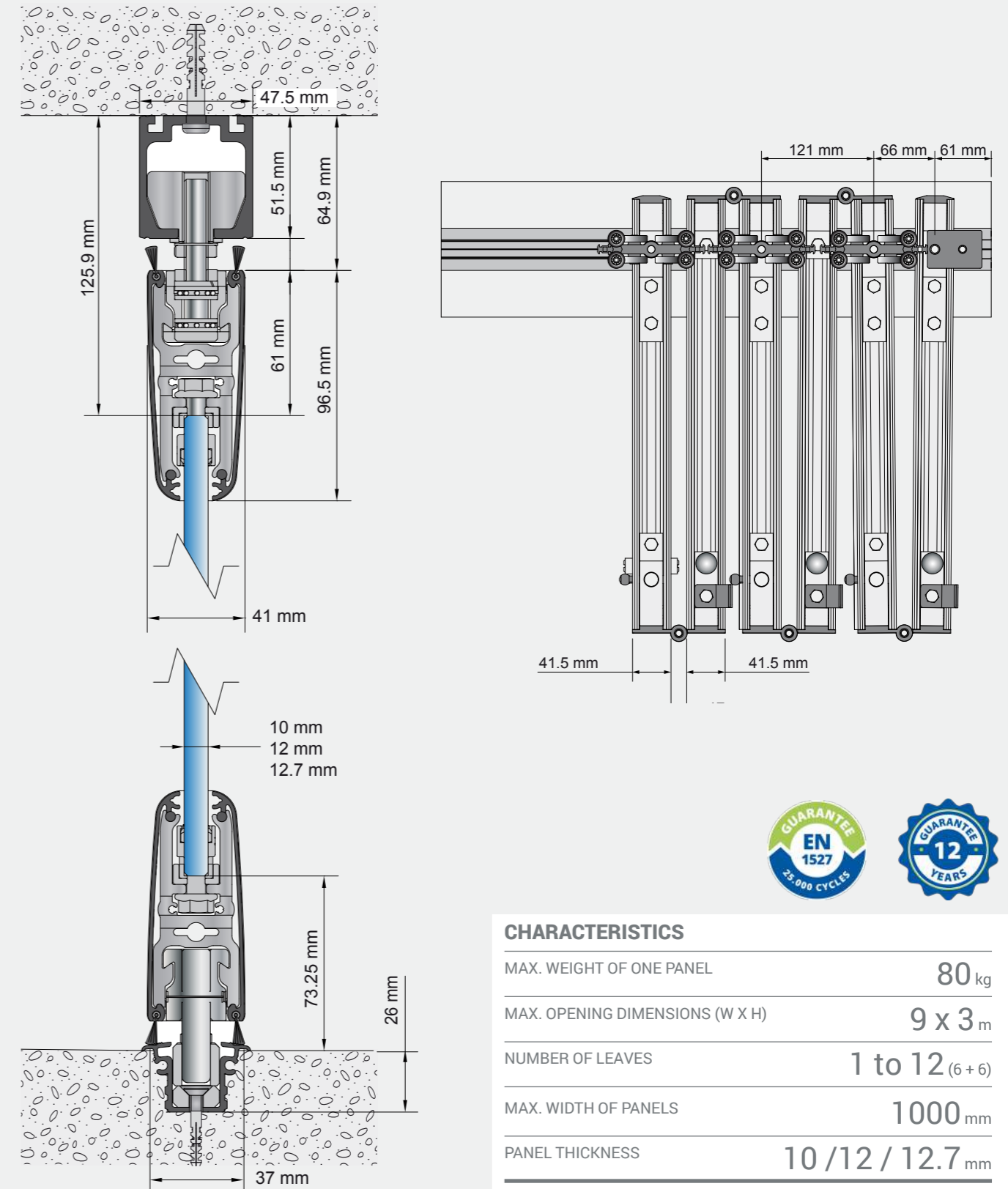
SlidSoft
match up your projects

MANTION
SLIDING SYSTEMS

ONLINE CALCULATION

Estimating the cost of your project is easy! Simply enter the dimensions of your opening and your chosen options. You will also have access to the full details of the products and plans.

www.mantion.com



CHARACTERISTICS

MAX. WEIGHT OF ONE PANEL	80 kg
MAX. OPENING DIMENSIONS (W X H)	9 x 3 m
NUMBER OF LEAVES	1 to 12 (6 + 6)
MAX. WIDTH OF PANELS	1000 mm
PANEL THICKNESS	10 / 12 / 12.7 mm