

Systems and Motors for Shutters and Shade Screens

Sliding | Folding | Swinnging

313A



MANTION® has been designing and manufacturing sliding systems since 1920

MADE IN FRANCE
SINCE 1920



European specialist in sliding systems for the building and overhead handling markets.

For over a century, the **Mantion®** group has been developing its business designing, making and selling sliding hardware for the building trade. Recognised today as one of the global leaders on our market, we always strive to anticipate trends and provide reliable and easy-to-use solutions for customers' personal and work spaces.

In that same spirit and driven by the love of a well-designed product built to last, in the last few years we have been investing in automatic controls for doors and windows, in a direct progression from our original products. Considering this a strategic area of development, we chose to develop and manufacture our own automatic control products in our subsidiary Mantion® SMT based

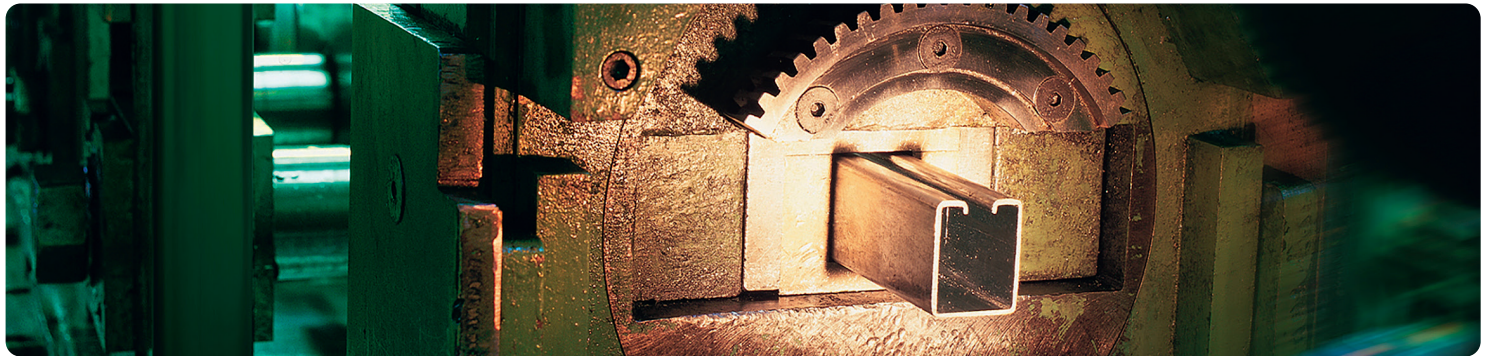
in Genlis in the Côte d'Or region of France. After pioneering the use of automatic controls for sliding shutters and then becoming the benchmark on the market for automatic controls for swing shutters, today we are able to bring you the most reliable, easy-to-use automatic control for sliding doors available on the market.

Mantion enjoys international recognition based on:

- ongoing innovation and continuously tailoring its products to its customers' needs
- the quality of its products which meet the highest standards on the market

Mantion's know-how is first and foremost:

- its team – men and women with a proven track record, who do all they can to provide you with the best service each and every day.
- its ongoing investment policy combined with the use of the latest technology



A passion for the product:

Mantion is based in Franche Comté, a region of France with a proud industrial past and a long-standing reputation for precision mechanical engineering and watchmaking. This culture is deeply ingrained in our staff, who are motivated by a constant quest for excellence and technical innovation.

Strong social ethics:

We attach great importance to the human aspects of business and the management of our people, without whom none of our achievements would be possible. This means we pay particular attention to **gender equality and continuing training**.

We are convinced that we can only gain by opening up the company to its environment and so we encourage exchanges with the academic and cultural worlds, regularly hosting students on placements, training apprentices, developing partnerships with **schools and universities**, and occasionally offering industrial sponsorships, thereby highlighting our employees' expertise and putting it to good use.

Our presence abroad, which dates back more than 50 years, has helped to shape an **open and culturally diverse mindset at Mantion**. Our teams include people of a dozen nationalities who all work together on a daily basis, constantly interacting

with customers located in over 80 countries on 5 continents. This environment gives the company an exceptional culture of openness that benefits all our partners.

The environment – always a central concern:

Certified ISO 14001, we have already been working for over 30 years on minimising the environmental impact of our products.

Pioneers in our field in the use of lightweight materials such as high strength steels (1990) and for the total elimination of chromium from the surface treatments of our products (2003).

Committed to making the sustainability of our products a priority, we have turned this ambition into a reality with warranties of up to 25 years on some products.

Mantion has made commitment to limit its environmental impact with eco-friendly printing.

this product is certified



PEFC 10-31-3527



Guarantee certificate

MANTION S.A.S

Guarantees a performance* of
12 years

on sliding systems for outdoor applications
on the following ranges:

SPORTUB® • HERCULE® • OPENTEC®
WIN-SLIDE 2 • WIN-STH • WIN-STS
WIN-FOLD 2



Florian Cunin
MANTION S.A.S
Chief Executive Officer

* This guarantee only applies to a number of cycles defined by our product range, installation instructions and conditions that can be found on our web site www.mantion.com

To back up its environmental policy, MANTION has issued a French collective Environmental and Health Declaration (FDES), an EPD at European level.

The EPD is a multi-criteria tool that helps professionals make choices that will make buildings more sustainable and limit their environmental impact whilst creating a healthy environment for future users.





Our systems for shutters are subject to standards that certify their compliance.

Several standards apply to systems for shutters.
Some are mandatory and others are optional.

Because quality and safety must be beyond reproach, our systems for shutters meet all French and European standards.

MANTION has one of the largest testing centres in Europe in the area of sliding systems.

STANDARDS



The Manton group is actively involved in many standardisation working groups, in both France (SNFPSA UNM) and Europe (CEN). And more particularly for standards **NF EN 1527 v2013** and **PR NF EN 26-341**. All the Manton manual and motorised sliding systems in this catalogue are designed and manufactured in strict compliance with the following European standards:

- **NF EN 1527 v2013:** Hardware for sliding doors and folding doors – Requirements and test methods
- **PR NF P26-341:** Building hardware – Automated devices for operating swinging, sliding and sliding-folding shutters
- **PR NF EN 1932:** External blinds and shutters – Resistance to wind loads – Method of testing
- **NF EN 12045:** Shutters and blinds power operated – Safety in use – Measurement of the transmitted force
- **NF EN 12051:** Building hardware – Door and window bolts – Requirements and test methods
- **NF EN 12194:** Shutters, external and internal blinds – Misuse – Test methods
- **PR NF EN 13330:** Shutters – Hard body impact and prevention of access – Test methods
- **NF EN 13527:** Shutters and blinds – Measurement of operating force – Test methods
- **NF EN 13659:** Shutters and blinds – Performance requirements including safety

- **NF EN 14201:** Blinds and shutters – Resistance to repeated operations (mechanical endurance) – Methods of testing
- **PR NF P26-341:** Building hardware – Automated devices for operating swinging, sliding and sliding-folding shutters
- **NF EN 14648:** Building hardware – Fittings for shutters – Requirements and test methods
- **NF EN 60335-2-103:** Household and similar electrical appliances – Safety – part 2-103: Particular requirements for drives for gates, doors and windows
- **ISO 4520:** Specification for chromate conversion coatings on electroplated zinc and cadmium coatings



This guarantee applies within the limit of a number of cycles specific to each range and depending on the conditions of installation. Details are available on WWW.MANTION.COM

Our Terms and Conditions of Sale are also available online: WWW.MANTION.COM

SUMMARY

06

SLIDING SHUTTERS



Aluminium Range

WIN-SLIDE 2

Track + brackets – single and double channel
120 kg max.



06

WIN-SLIDE 2 - COASTAL

Track + brackets – single and double channel
120 kg max.



32

WIN-SLIDE 2 SETS

Set for 1 leaf - 80 kg
Set for 2 leaves in opposite directions - 80 kg



34

SYCOMM MOTORISED SYSTEM

230V power supply
230V power supply with battery pack



36

SYCOMM SOLAR MOTORISED SYSTEM

12V DC power supply



38

Steel & Stainless Steel Range

WIN-STH

HERCULE® track - Steel or Stainless Steel
9010: 80 kg max. – 9030: 200 kg max.



40

WIN-STS

SPORTUB® track - Steel
3530: 80 kg max. – 5040: 150 kg max.



42

Lower guide

FAÇADE MOUNTING

44

FLOOR/SILL MOUNTING

46

48

SLIDING FOLDING SHUTTERS



WIN-FOLD 2

Aluminium track – 20 kg max.
Face or reveal fitting



48

50

SWING SHUTTERS (AUTOMATIC CONTROLS)



WIBAT®

Invisible drive (hinge pin)
50 kg max.



50

WIBAT® APPLIQUE

Arm drive
50 kg max.



52

WIBAT® LINTEAU

Arm drive with aluminium box
50 kg max.



54

58

MISCELLANEOUS

OTHER MANTION® products

58

Digital list

59



WIN-Slide 2

Sliding shutters

SUMMARY



STRAIGHT SLIDING								
Ceiling mounting	 1 channel - 1 leaf	80 KG	25 - 80 mm	✓				see details p. 08
Wall mounting			25 - 40 mm	✓				see details p. 10
Ceiling mounting		120 KG	40 - 80 mm	✓				see details p. 12
Wall mounting			40 - 80 mm	✓				see details p. 14
SYMMETRICAL SLIDING								
Ceiling mounting - synchronised	 1 channel - 2 leaves	80 KG	25 - 80 mm		✓			see details p. 16
Wall mounting - manual			25 - 60 mm	✓				see details p. 18
Wall mounting - synchronised			25 - 60 mm		✓			see details p. 20
Ceiling mounting - synchronised		120 KG	40 - 80 mm		✓			see details p. 22
Wall mounting - synchronised			40 - 80 mm		✓			see details p. 24
TELESCOPIC SLIDING								
Wall mounting - 2 leaves		80 KG	25 - 40 mm			✓		see details p. 26
Wall mounting - 3 leaves						✓		see details p. 28
Wall mounting - 4 leaves						✓		see details p. 30
OTHERS								
Coastal sliding		120 KG	25 - 80 mm	✓				see details p. 32
Complete sets		80 KG	25 - 40 mm	✓				see details p. 34
Sycomm motorized system		120 KG	25 - 80 mm				✓	see details p. 36
Sycomm solar motorized system		120 KG	25 - 80 mm					see details p. 38



Coastal



Complete sets



Motorised systems



Leaf weight



Leaf thickness



Manual systems



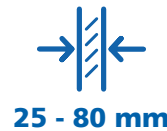
Symmetrical systems



Telescopic systems



Motorized systems



Ceiling mounting - single channel - 1 leaf

Configuration WITHOUT PELMET:

Track	Rollers	Plates (your choice)	Track stops (your choice)	Lower guide
		or	and/or	Your choice (see below)
11208P	11280XA2	0026XA2 or 0027XA2	11286XA2 and/or 11287XA2	

Configuration WITH PELMET:

Track	Rollers	Plates (your choice)	Track stops (your choice)	Pelmet + brackets	Lower guide
		or	and/or	+	Your choice (see below)
11208P	11280LXA2	0026XA2 or 0027XA2	11286XA2 and/or 11287XA2	11261 + 11294A	

MANTION EXCLUSIVE

1310BR-1
Sunshade stop kit
See p.57

Components list:

TRACK

11208P/600 Raw aluminium track, section 39 x 36 mm, drilled every 450 mm. Length = 6 m.

ROLLERS - PLATES - TRACK STOPS

ROLLERS

11280XA2 Roller mounted on ball bearings, A2 stainless steel M8 screw (59 mm). max. weight **80 kg**/panel.

11280LXA2 Roller mounted on ball bearings, A2 stainless steel M8 screw (93 mm). max. weight **80 kg**/panel.

PLATES

0026XA2 A2 stainless steel plate to be screwed on edge. Leaf thickness: 25 mm min.

0027XA2 A2 stainless steel bracket to be screwed on panel face (80 x 58 mm). Leaf thickness: 28 to 36 mm.

TRACK STOPS

11286XA2 Track stop with two anchoring points. Supplied with A2 stainless steel fasteners.

11287XA2 Track stop with two anchoring points. The clamp holds the panel in the open or closed position. Supplied with A2 stainless steel fasteners.

PELMET & BRACKETS - leaves thickness: 60 mm max.

11261/...* Raw aluminium pelmet. Length = 2 / 3 and 6 m.

11294A Set of 5 anodised aluminium mounting brackets. For fixing the pelmet 11261. Supplied with A4 stainless steel fasteners. Fastened every 450 mm.

*other lengths available on request

LOWER GUIDE

U-PROFILES

1109/... 25x17 zinc-plated steel U-profile. Length = 2 / 3 / 4 / 5 and 6 m.

11109/... 20x24 anodised aluminium U-profile (14 on inside). Length = 3 and 6 m. Profiles are available in raw aluminium (to paint) upon request.

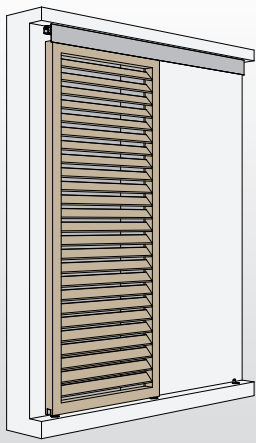
GUIDES

1128 Adjustable guide with 2 flexible-coated guide rollers, A2 stainless steel bracket. For U-profiles 1109 (25 x 17 mm) and 11109 (20 x 24 mm).

1102XA2 Guide with 1 nylon guide roller on A2 stainless steel plate to be screwed in. For U-profiles 1109 (25 x 17 mm) and 11109 (20 x 24 mm).

1103RG Plastic adjustable slider (14 to 30 mm) with screw and S6 dowel. For U-profiles 14 to 30 mm (1109 et 11109).

Other U-profile and guides available p.44-46

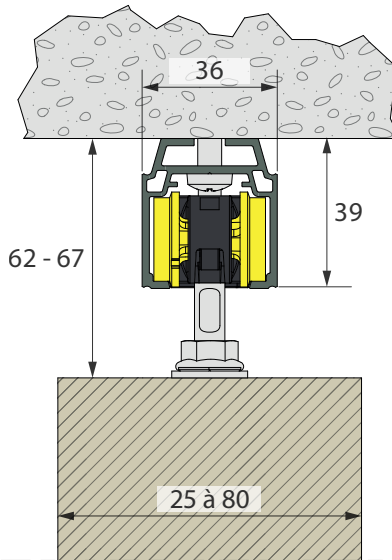
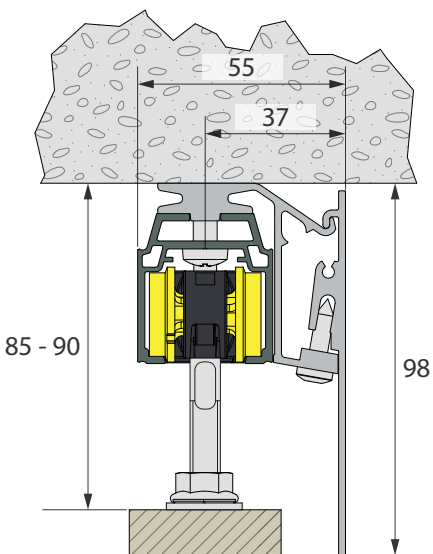


Ceiling mounting - single channel - 1 leaf

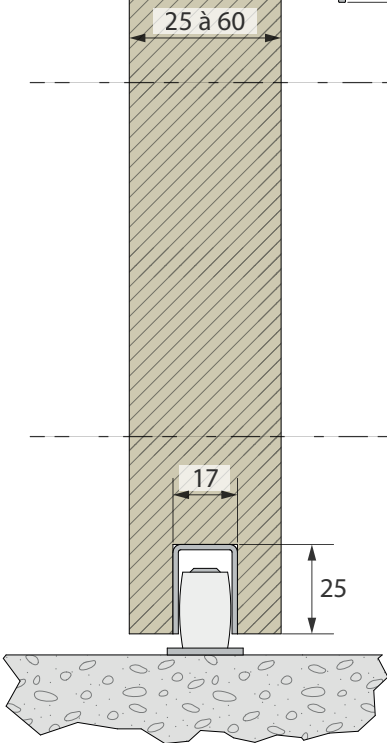


MADE IN FRANCE
SINCE 1920

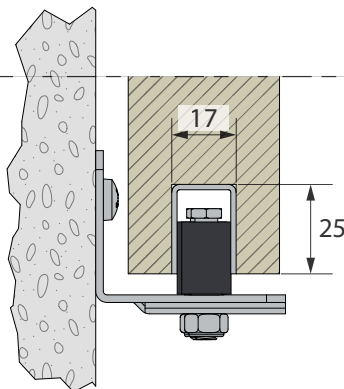
SLIDING



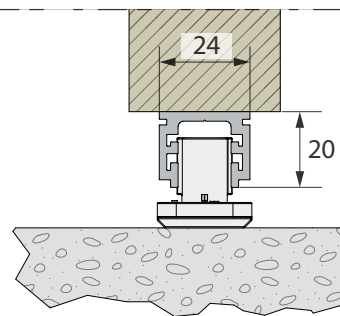
"shade screen"
configuration without pelmet
leaf thickness:
up to 80 mm



U-profile: **1109**
Guide: **1102XA2**



U-profile: **1109**
Guide: **1128**



U-profile: **11109**
Guide: **1103RG**

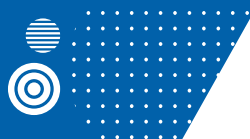
QUOTE
ONLINE
SlidSoft

Deriving solution for your project is easy!

Enter the dimensions of your opening and choose additional options. Access to solution with plans.



Configurator



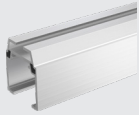
Wall mounting - single channel - 1 leaf

Configuration:

Track	Brackets	Rollers	Plates (your choice)	Track stops and soft-closer (your choice)	Pelmet + end caps	Lower guide
			or	and/or and/or	+	Your choice (see below)
11208	11293	11280XA2	0026XA2 or 0027XA2	11286XA2 and/or 11287XA2 and/or 11288M15	11263 + 11266	

Components list:

TRACK & MOUNTING



11208/...* Raw aluminium track, section 39 x 36 mm. Length = 2 / 3 and 6 m.



11293 Adjustable fixing bracket in raw aluminium. Supplied with A2 stainless steel fasteners. Fastened every 660 mm at most.

*other lengths available on request

ROLLER - PLATES - TRACK STOPS

ROLLER

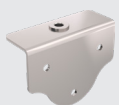


11280XA2 Roller mounted on ball bearings, A2 stainless steel M8 screw (59 mm). max. weight **80 kg**/panel.

PLATES



0026XA2 A2 stainless steel plate to be screwed on edge. Leaf thickness: 25 mm min.



0027XA2 A2 stainless steel bracket to be screwed on panel face (80 x 58 mm). Leaf thickness: 28 to 36 mm.

TRACK STOPS



11286XA2 Track stop with two anchoring points. Supplied with A2 stainless steel fasteners.



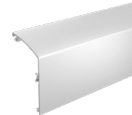
11287XA2 Track stop with two anchoring points. The clamp holds the panel in the open or closed position. Supplied with A2 stainless steel fasteners.

SOFT-CLOSER



11288M15 Soft-closer for softly opening and/or closing doors. Suitable for doors weighing **20-60 kg**.
- 1 damper: min. width of door: **590 mm**
- 2 dampers: min. width of door: **860 mm**

PELMET & END CAPS



11263/...* Raw aluminium pelmet. Length = 2 / 3 and 6 m.



11266 Set of pelmet end caps **11263**, including: 2 raw aluminium end caps, 2 pelmet fastening clamps, 8 A4 stainless steel fastening screws.

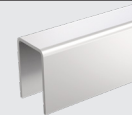


11269 Set of 5 additional clamps in anodised aluminium for fixing the pelmet to the brackets. For use when the pelmet is longer than 3 m. (in addition to the two clamps already supplied in the end cap kit).

*other lengths available on request

LOWER GUIDE

U-PROFILES

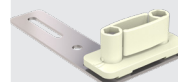


1109/... 25x17 zinc-plated steel U-profile. Length = 2 / 3 / 4 / 5 and 6 m.



11109/... 20x24 anodised aluminium U-profile (14 on inside). Length = 3 and 6 m. Profiles are available in raw aluminium (to paint) upon request.

GUIDES



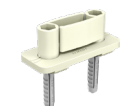
1131XRG Simple plastic slider on A2 stainless steel tiltable plate. For U-profiles 14 to 30 mm (1109 and 11109).



1128 Adjustable guide with 2 flexible-coated guide rollers, A2 stainless steel bracket. For U-profiles 1109 (25 x 17 mm) and 11109 (20 x 24 mm).

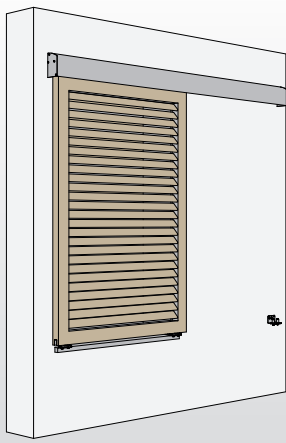


1112/2 Adjustable guide with 2 nylon guide rollers on A2 stainless steel plate. For U-profiles 1109 (25 x 17 mm) and 11109 (20 x 24 mm).

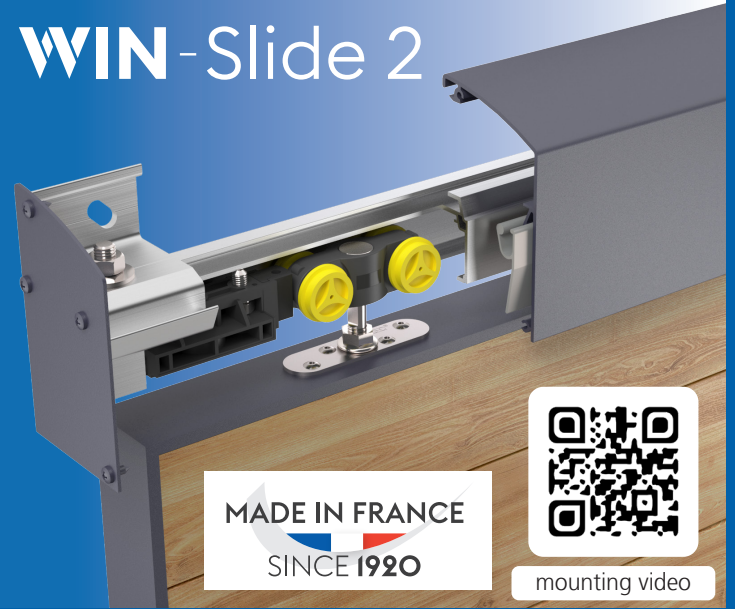


1103RG Plastic adjustable slider (14 to 30 mm) with screw and S6 dowel. For U-profiles 14 to 30 mm (1109 and 11109).

Other U-profile and guides available p.44-46



←
Wall mounting - single channel - 1 leaf

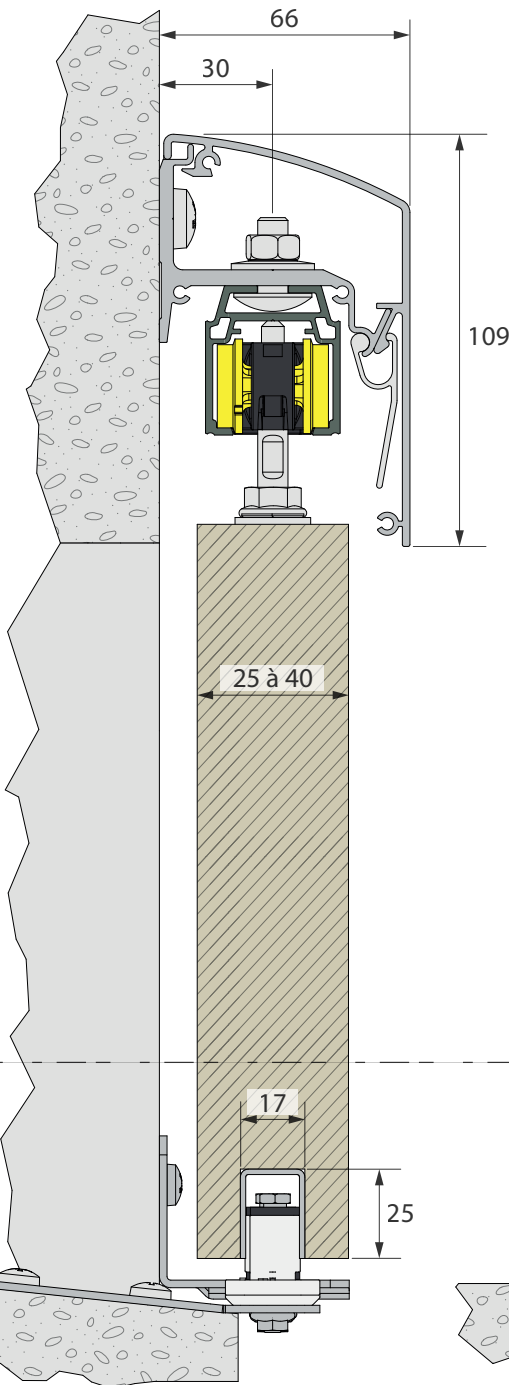


MADE IN FRANCE
SINCE 1920



mounting video

SLIDING



MANTION
EXCLUSIVE

Innovation
Soft-closer
11288M15

QUOTE
ONLINE
SlidSoft

Deriving solution for your project is easy!

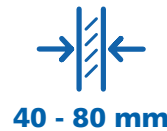
Enter the dimensions of your opening and choose additional options. Access to solution with plans.

Configurator

U-profile: **1109**
Guides: **1128 + 1131XRG**

U-profile: **1109**
Guide: **1112/2**

U-profile: **11109**
Guide: **1103RG**



Ceiling mounting - single channel - 1 leaf

Configuration WITHOUT PELMET:

Track	Rollers	Plates	Track stops (your choice)	Lower guide
				Your choice (see below)
11208P	11282LXA4	0026XA4	11286XA2 and/or 11287XA2	

Configuration WITH PELMET:

Track	Rollers	Plates	Track stops (your choice)	Pelmet + brackets	Lower guide
					Your choice (see below)
11208P	11282LXA4	0026XA4	11286XA2 and/or 11287XA2	11261 + 11294A	

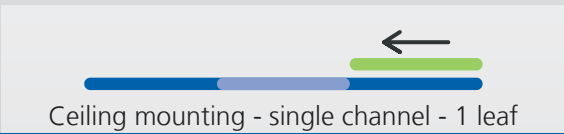
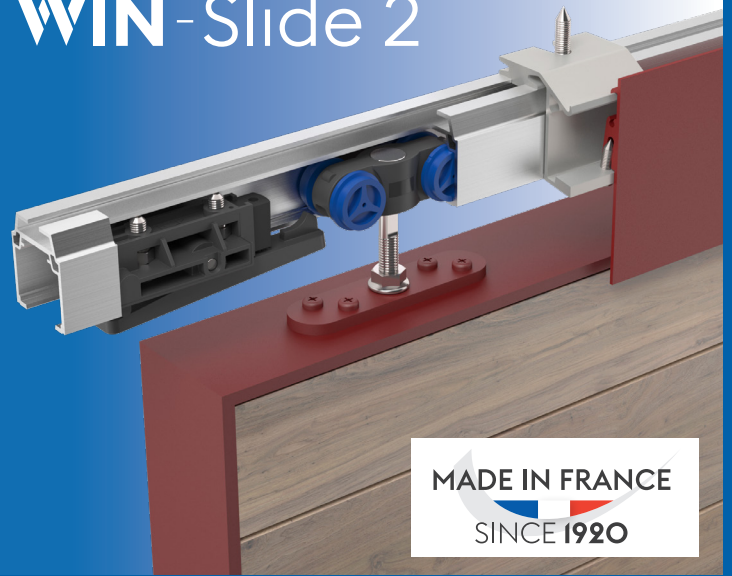
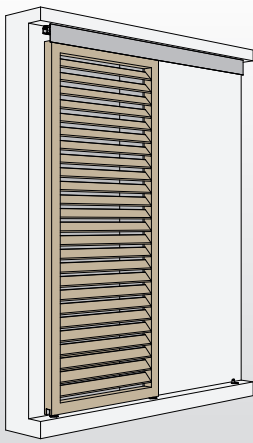


Components list:

TRACK	PELLMET & BRACKETS - leaves thickness: 60 mm max.		
<p>11208P/600 Raw aluminium track, section 39 x 36 mm, drilled every 450 mm. Length = 6 m.</p>	<p>11261/...* Raw aluminium pelmet. Length = 2 / 3 and 6 m.</p>		
<th>ROLLER - PLATE - TRACK STOPS</th> <td> <p>11294A Set of 5 anodised aluminium mounting brackets. For fixing the pelmet 11261. Supplied with A4 stainless steel fasteners. Fastened every 450 mm.</p> </td>	ROLLER - PLATE - TRACK STOPS	<p>11294A Set of 5 anodised aluminium mounting brackets. For fixing the pelmet 11261. Supplied with A4 stainless steel fasteners. Fastened every 450 mm.</p>	
<th>ROLLER</th> <td> <p><i>*other lengths available on request</i></p> </td>	ROLLER	<p><i>*other lengths available on request</i></p>	
<p>11282LXA4 Roller mounted on ball bearings, A4 stainless steel M8 screw (93 mm). max. weight 120 kg/panel.</p>	<th>LOWER GUIDE</th>	LOWER GUIDE	
<th>PLATE</th> <td> <th>U-PROFILE</th> </td>	PLATE	<th>U-PROFILE</th>	U-PROFILE
<p>0026XA4 A4 stainless steel plate to be screwed on edge.</p>	<p>1110XA2/... 30X30 A2 stainless steel U-profile. Length = 3 / 4 / 5 and 6 m.</p>		
<th>TRACK STOPS</th> <td> <th>GUIDES</th> </td>	TRACK STOPS	<th>GUIDES</th>	GUIDES
<p>11286XA2 Track stop with two anchoring points. Supplied with A2 stainless steel fasteners.</p>	<p>1110GDL White nylon slider to be screwed in, 100 x 25 x 25 mm. For U-profile 1110 (30 x 30 mm).</p>		
<p>11287XA2 Track stop with two anchoring points. The clamp holds the panel in the open or closed position. Supplied with A2 stainless steel fasteners.</p>	<p>1110GU Grey plastic slider to be screwed in. For U-profile 1110 (30 x 30 mm).</p>		

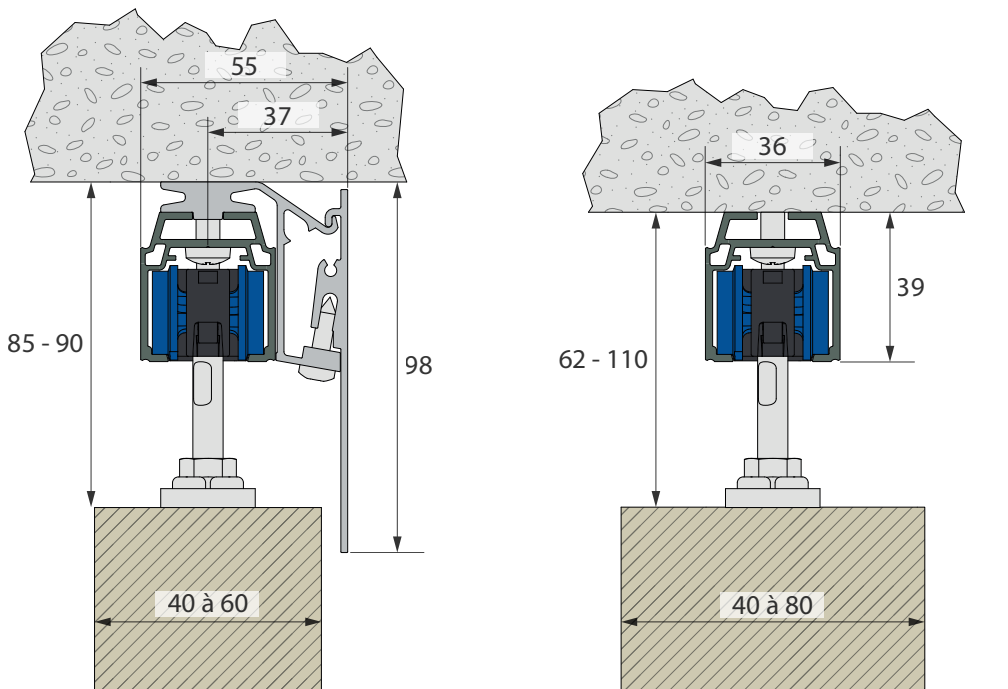
Other U-profile and guides available p.44-46

WIN-Slide 2

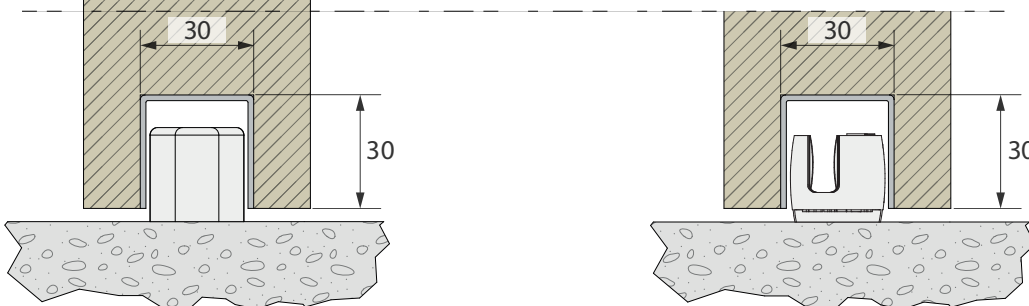


MADE IN FRANCE
SINCE 1920

SLIDING



«shade screen»
configuration without pelmet
leaf thickness:
up to 80 mm



U-profile: **1110XA2**
Guide: **1110GDL**

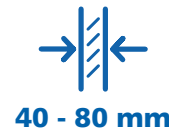
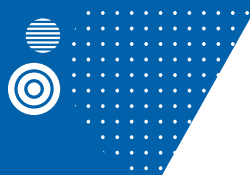
U-profile: **1110XA2**
Guide: **11110GU**

QUOTE ONLINE
SlidSoft

Deriving solution for your project is easy!

Enter the dimensions of your opening and choose additional options. Access to solution with plans.

Configurator



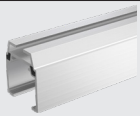
Wall mounting - single channel - 1 leaf

Configuration:

Track	Brackets	Rollers	Plates	Track stops (your choice)	Pelmet + end caps	Lower guide
						Your choice (see below)
11208	11293D	11282LXA4	0026XA4	11286XA2 and/or 11287XA2	11264L + 11267L	

Components list:

TRACK & MOUNTING



11208/...* Raw aluminium track, section 39 x 36 mm. Length = 2 / 3 and 6 m.



11293D Adjustable fixing bracket in raw aluminium. Supplied with A2 stainless steel fasteners. Fastened every 450 mm at most.

*other lengths available on request

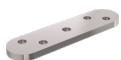
ROLLER - PLATE - TRACK STOPS

ROLLER



11282LXA4 Roller mounted on ball bearings, A4 stainless steel M8 screw (93 mm). max. weight **120 kg**/panel.

PLATE



0026XA4 A4 stainless steel plate to be screwed on edge.

TRACK STOPS



11286XA2 Track stop with two anchoring points. Supplied with A2 stainless steel fasteners.



11287XA2 Track stop with two anchoring points. The clamp holds the panel in the open or closed position. Supplied with A2 stainless steel fasteners.

PELMET & END CAPS



11264L/...* Raw aluminium pelmet. Length = 2 / 3 and 6 m.



11267L Set of pelmet end caps **11264L**, including: 2 raw aluminium end caps, 2 pelmet fastening clamps, 8 A4 stainless steel fastening screws.

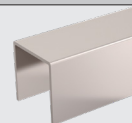


11269 Set of 5 additional clamps in anodised aluminium for fixing the pelmet to the brackets. For use when the pelmet is longer than 3 m. (in addition to the two clamps already supplied in the end cap kit).

*other lengths available on request

LOWER GUIDE

U-PROFILE



1110XA2/... Profil U 30x30 en INOX A2. Longueur = 3 / 4 / 5 and 6 m.

GUIDES

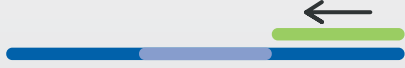
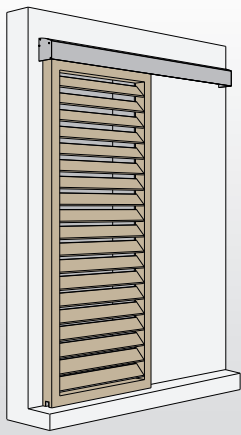


1110GDL White nylon slider to be screwed in, 100 x 25 x 25 mm. For U-profile 1110 (30 x 30 mm).



1110GU Grey plastic slider to be screwed in. For U-profile 1110 (30 x 30 mm).

Other U-profile and guides available p.44-46

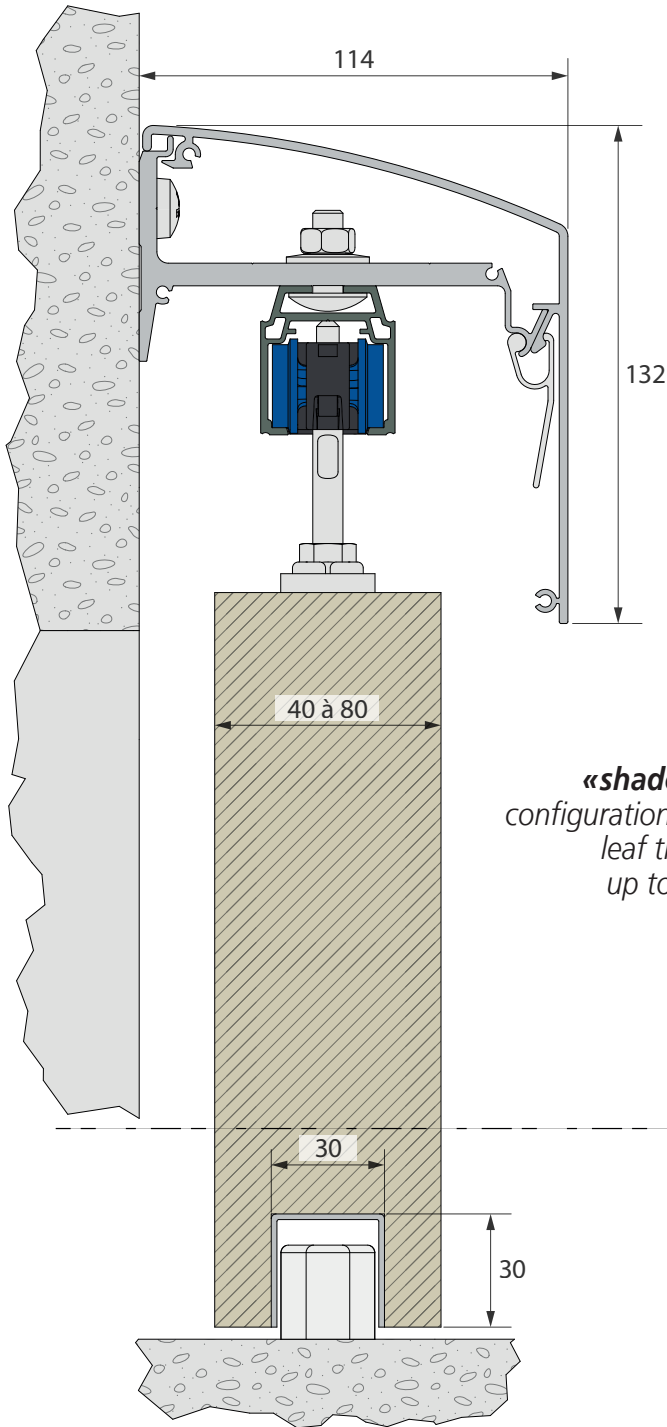


Wall mounting - single channel - 1 leaf



MADE IN FRANCE
SINCE 1920

SLIDING



«shade screen»
configuration without pelmet
leaf thickness:
up to 80 mm

MANTION
EXCLUSIVE

1310BR-1
Sunshade stop kit
See p.57

QUOTE
ONLINE
SlidSoft

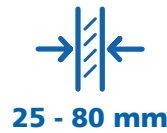
Deriving solution for your project is easy!

Enter the dimensions of your opening and choose additional options. Access to solution with plans.

Configurator

U-profile: **1110XA2**
Guide: **1110GDL**

U-profile: **1110XA2**
Guide: **11110GU**



Ceiling mounting - single channel - 2 leaves

Synchronised configuration **WITHOUT** PELMET:

Track	Rollers	Plates	Track stops (your choice)	Synchronisation	Lower guide
					Your choice (see below)
11208P	11280LXA2	0026XA2	11286XA2 or 11287XA2	11286XA2-SYN + 11291 + 10172	

MANTION
EXCLUSIVE



1310BR-1

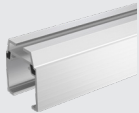
Sunshade stop kit
See p.57

Synchronised configuration **WITH** PELMET:

Track	Rollers	Plates	Track stops (your choice)	Pelmet + brackets	Synchronisation	Lower guide
						Your choice (see below)
11208P	11280LXA2	0026XA2	11286XA2 or 11287XA2	11261 + 11294A	11286XA2-SYN + 11291 + 10172	

Components list:

TRAK



11208P/600

Raw aluminium track, section 39 x 36 mm, drilled every 450 mm. Length = 6 m.

ROLLER - PLATE - TRACK STOPS

ROLLER



11280LXA2

Roller mounted on ball bearings, A2 stainless steel M8 screw (93 mm). max. weight 80 kg/panel.

PLATE



0026XA2

A2 stainless steel plate to be screwed on edge. Leaf thickness: 25 mm min.

TRACK STOPS



11286XA2

Track stop with two anchoring points. Supplied with A2 stainless steel fasteners.



11287XA2

Track stop with two anchoring points. The clamp holds the panel in the open or closed position. Supplied with A2 stainless steel fasteners.

PELMET & BRACKETS - leaves thickness: 60 mm max.



11261/...*

Raw aluminium pelmet. Length = 2 / 3 and 6 m.



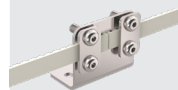
11294A

Set of 5 anodised aluminium mounting brackets. For fixing the pelmet 11261. Supplied with A4 stainless steel fasteners. Fastened every 450 mm.

SYNCHRONISATION

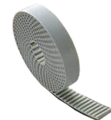


11286XA2-SYN Track stop with integrated return pulley.



11291

A2 stainless steel joining bracket.

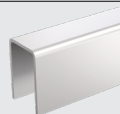


10172/...

Reinforced cog belt. Length = 2.5 / 5 / 7.5 / 10 / 15 / 25 and 50 m.

LOWER GUIDE

U-PROFILES



1109/...

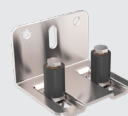
25x17 zinc-plated steel U-profile. Length = 2 / 3 / 4 / 5 and 6 m.



11109/...

20x24 anodised aluminium U-profile (14 on inside). Length = 3 and 6 m. Profiles are available in raw aluminium (to paint) upon request.

GUIDES



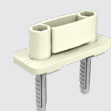
1128

Adjustable guide with 2 flexible-coated guide rollers, A2 stainless steel bracket. For U-profiles 1109 (25 x 17 mm) and 11109 (20 x 24 mm).



11202XA2

Guide with 1 nylon guide roller on A2 stainless steel plate to be screwed in. For U-profiles 1109 (25 x 17 mm) and 11109 (20 x 24 mm).



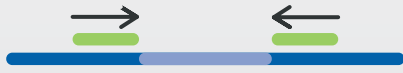
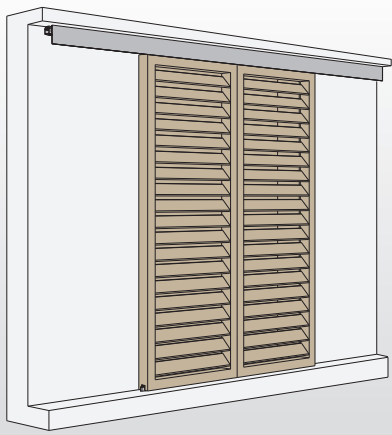
1103RG

Plastic adjustable slider (14 to 30 mm) with screw and S6 dowel. For U-profiles 14 to 30 mm (1109 and 11109).

*other lengths available on request

Other U-profile and guides available p.44-46

WIN-Slide 2



MADE IN FRANCE
SINCE 1920

SLIDING

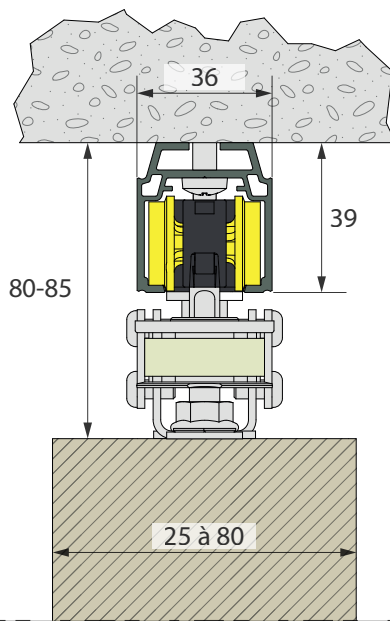
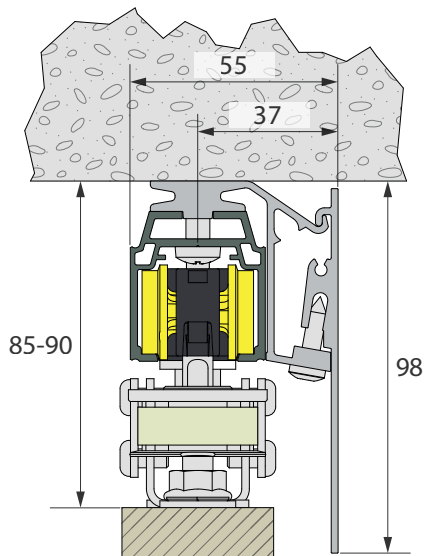
Ceiling mounting - single channel - 2 synchronised symmetrical leaves

QUOTE ONLINE
SlidSoft

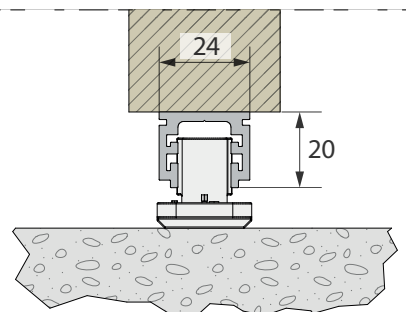
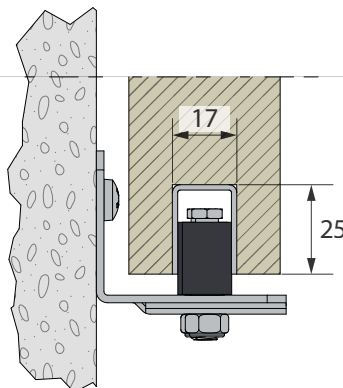
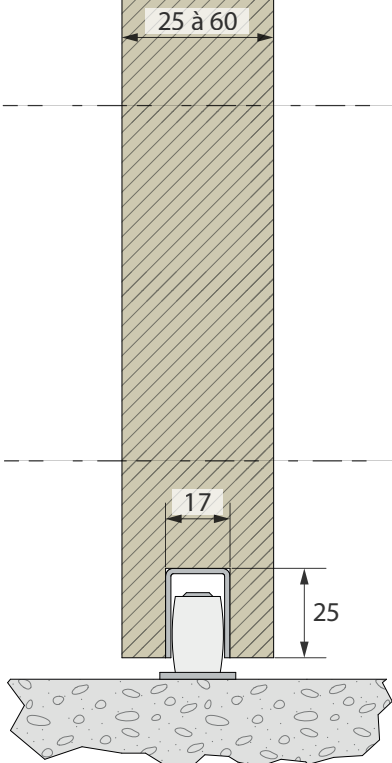
Deriving solution for your project is easy!

Enter the dimensions of your opening and choose additional options. Access to solution with plans.

Configurator



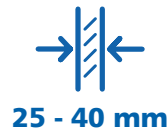
«shade screen»
configuration without pelmet
leaf thickness:
up to 80 mm



U-profile: **1109**
Guide: **1102XA2**

U-profile: **1109**
Guide: **1128**

U-profile: **11109**
Guide: **1103RG**



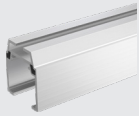
Wall mounting - single channel - 2 leaves

MANUAL configuration:

Track	Brackets	Rollers	Plates	Track stops and soft-closer (your choice)	Pelmet + end caps	Lower guide
						Your choice (see below)
11208	11293	11280XA2	0026XA2	11286XA2 and/or 11287XA2 and/or 11288M15	11263 + 11266	

Components list:

TRACK & MOUNTING



11208/...* Raw aluminium track, section 39 x 36 mm. Length = 2 / 3 and 6 m.



11293 Adjustable fixing bracket in raw aluminium. Supplied with A2 stainless steel fasteners. Fastened every 660 mm at most.

**other lengths available on request*

ROLLER - PLATES - TRACK STOPS

ROLLER



11280XA2 Roller mounted on ball bearings, A2 stainless steel M8 screw (59 mm). max. weight **80 kg**/panel.

PLATE



0026XA2 A2 stainless steel plate to be screwed on edge. Leaf thickness: 25 mm min.

TRACK STOPS



11286XA2 Track stop with two anchoring points. Supplied with A2 stainless steel fasteners.



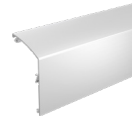
11287XA2 Track stop with two anchoring points. The clamp holds the panel in the open or closed position. Supplied with A2 stainless steel fasteners.

SOFT-CLOSER



11288M15 Soft-closer for softly opening and/or closing doors. Suitable for doors weighing **20-60 kg**.
- 1 damper: min. width of door: **590 mm**
- 2 dampers: min. width of door: **860 mm**

PELMET & END CAPS



11263/...* Raw aluminium pelmet. Length = 2 / 3 and 6 m.



11266 Set of pelmet end caps **11263**, including: 2 raw aluminium end caps, 2 pelmet fastening clamps, 8 A4 stainless steel fastening screws.

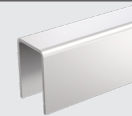


11269 Set of 5 additional clamps in anodised aluminium for fixing the pelmet to the brackets. For use when the pelmet is longer than 3 m. (in addition to the two clamps already supplied in the end cap kit).

**other lengths available on request*

LOWER GUIDE

U-PROFILES

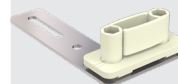


1109/... 25x17 zinc-plated steel U-profile. Length = 2 / 3 / 4 / 5 and 6 m.



11109/... 20x24 anodised aluminium U-profile (14 on inside). Length = 3 and 6 m. Profiles are available in raw aluminium (to paint) upon request.

GUIDES



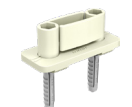
1131XRG Simple plastic slider on A2 stainless steel tiltable plate. For U-profiles 14 to 30 mm (1109 and 11109).



1128 Adjustable guide with 2 flexible-coated guide rollers, A2 stainless steel bracket. For U-profiles 1109 (25 x 17 mm) and 11109 (20 x 24 mm).

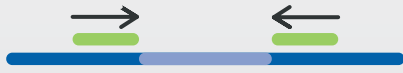
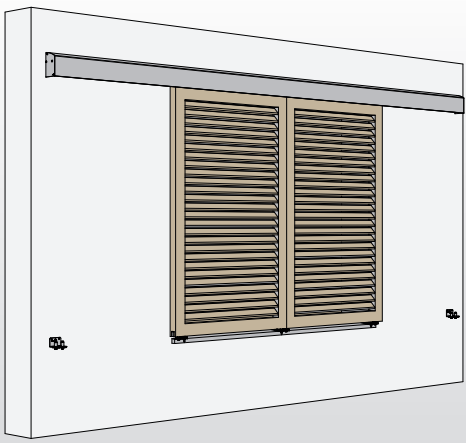


1112/2 Adjustable guide with 2 nylon guide rollers on A2 stainless steel plate. For U-profiles 1109 (25 x 17 mm) and 11109 (20 x 24 mm).



1103RG Plastic adjustable slider (14 to 30 mm) with screw and S6 dowel. For U-profiles 14 to 30 mm (1109 and 11109).

Other U-profile and guides available p.44-46

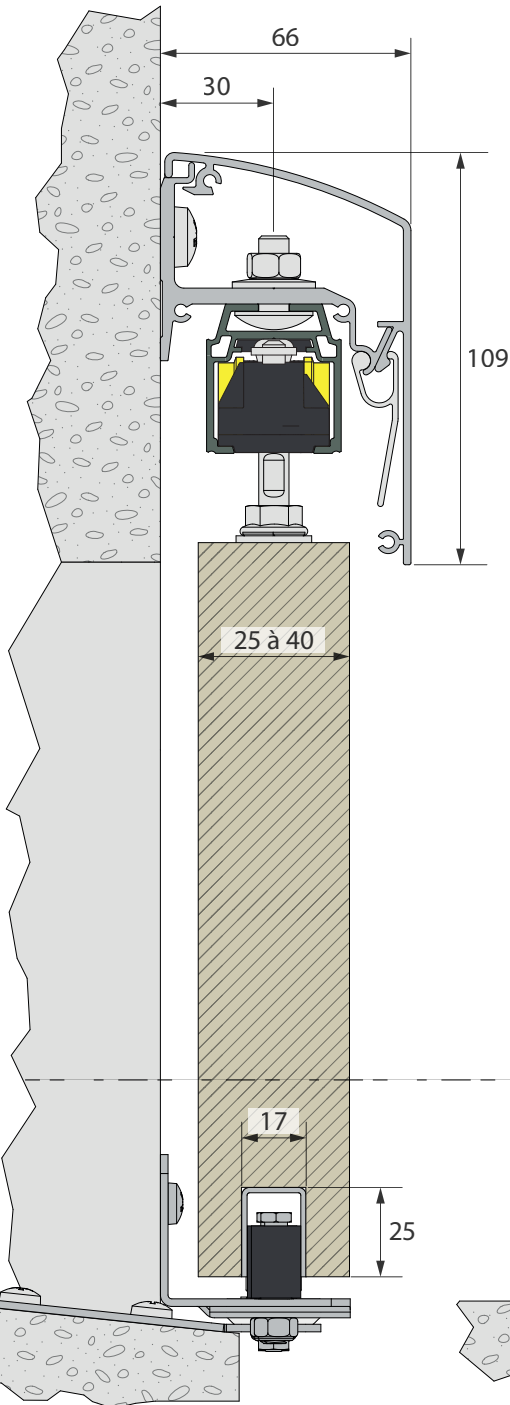


Wall mounting - single channel - 2 manual symmetrical leaves



MADE IN FRANCE
SINCE 1920

SLIDING



MANTION
EXCLUSIVE

Innovation
Soft-closer
11288M15

QUOTE
ONLINE
SlidSoft

Deriving solution for your project is easy!

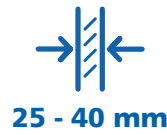
Enter the dimensions of your opening and choose additional options. Access to solution with plans.

Configurator

U-profile: **1109**
Guides: **1128 + 1131XRG**

U-profile: **1109**
Guide: **1112/2**

U-profile: **11109**
Guide: **1103RG**



Wall mounting - single channel - 2 leaves

SYNCHRONISED configuration:

Track	Brackets	Rollers	Plates	Track stops (your choice)	Pelmet + end caps	Synchronisation	Lower guide
11208	11293	11280LXA2	0026XA2	11286XA2 or 11287XA2	11263L + 11266L	11286XA2-SYN + 11291 + 10172	Your choice (see below)

Components list:

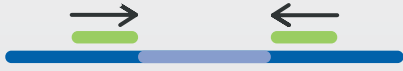
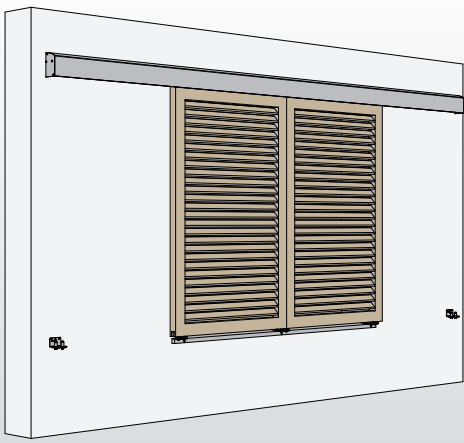
RAILS & FIXATION	
	11208/... * Raw aluminium track, section 39 x 36 mm. Length = 2 / 3 and 6 m.
	11293 Adjustable fixing bracket in raw aluminium. Supplied with A2 stainless steel fasteners. Fastened every 660 mm at most.
*other lengths available on request	
ROLLER - PLATES - TRACK STOPS	
ROLLER	
	11280LXA2 Roller mounted on ball bearings, A2 stainless steel M8 screw (93 mm). max. weight 80 kg /panel.
PLATE	
	0026XA2 A2 stainless steel plate to be screwed on edge. Leaf thickness: 25 mm min.
TRACK STOPS	
	11286XA2 Track stop with two anchoring points. Supplied with A2 stainless steel fasteners.
	11287XA2 Track stop with two anchoring points. The clamp holds the panel in the open or closed position. Supplied with A2 stainless steel fasteners.
PELMET & END CAPS	
	11263L/... * Raw aluminium pelmet. Length = 2 / 3 and 6 m.
	11266L Set of pelmet end caps 11263L , including: 2 raw aluminium end caps, 2 pelmet fastening clamps, 8 A4 stainless steel fastening screws.
	11269 Set of 5 additional clamps in anodised aluminium for fixing the pelmet to the brackets. For use when the pelmet is longer than 3 m. (in addition to the two clamps already supplied in the end cap kit).

*other lengths available on request

SYNCHRONISATION	
	11286XA2-SYN Track stop with integrated return pulley.
	11291 A2 stainless steel joining bracket.
	10172/... Reinforced cog belt. Length = 2.5 / 5 / 7.5 / 10 / 15 / 25 and 50 m.
LOWER GUIDE	
U-PROFILES	
	1109/... 25x17 zinc-plated steel U-profile. Length = 2 / 3 / 4 / 5 and 6 m.
	11109/... 20x24 anodised aluminium U-profile (14 on inside). Length = 3 and 6 m. Profiles are available in raw aluminium (to paint) upon request.
GUIDES	
	1131XRG Simple plastic slider on A2 stainless steel tiltable plate. For U-profiles 14 to 30 mm (1109 and 11109).
	1128 Adjustable guide with 2 flexible-coated guide rollers, A2 stainless steel bracket. For U-profiles 1109 (25 x 17 mm) and 11109 (20 x 24 mm).
	1112/2 Adjustable guide with 2 nylon guide rollers on A2 stainless steel plate. For U-profiles 1109 (25 x 17 mm) and 11109 (20 x 24 mm).
	1103RG Plastic adjustable slider (14 to 30 mm) with screw and S6 dowel. For U-profiles 14 to 30 mm (1109 and 11109).

Other U-profile and guides available p.44-46

WIN-Slide 2

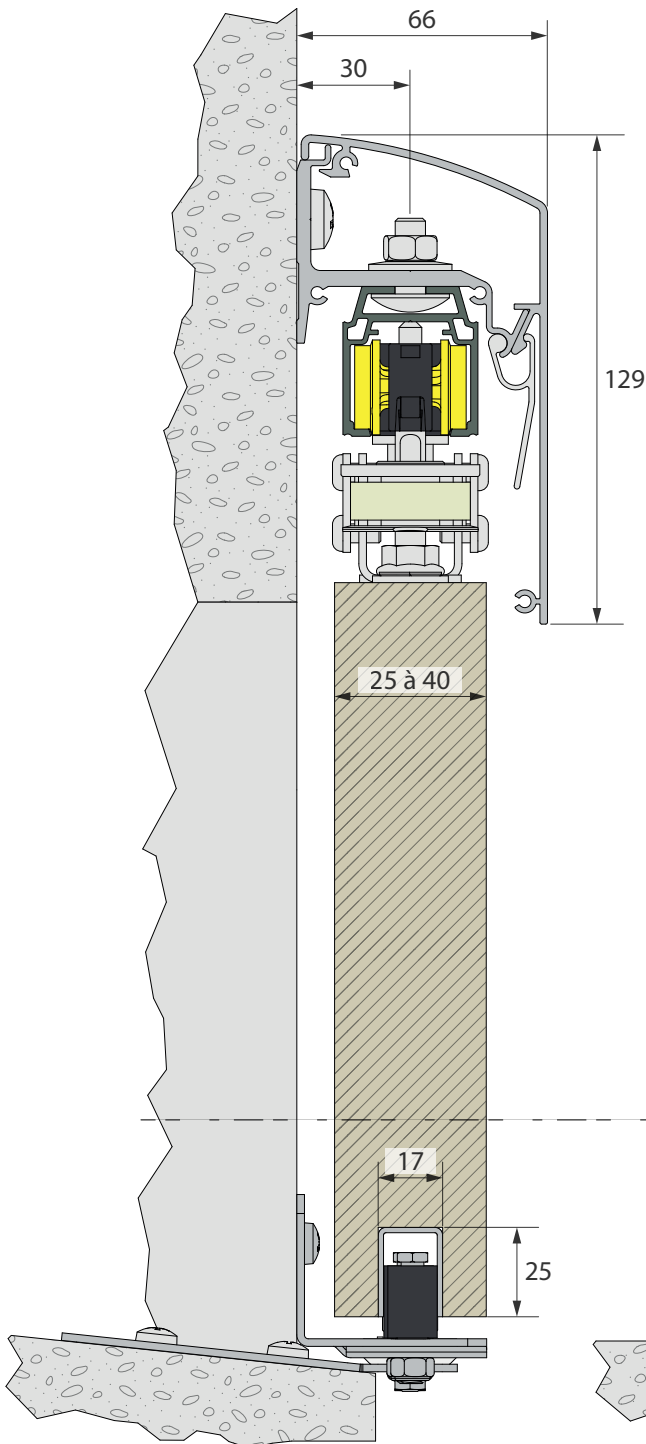


Wall mounting - single channel - 2 synchronised symmetrical leaves

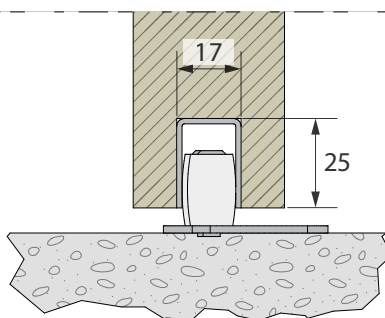


MADE IN FRANCE
SINCE 1920

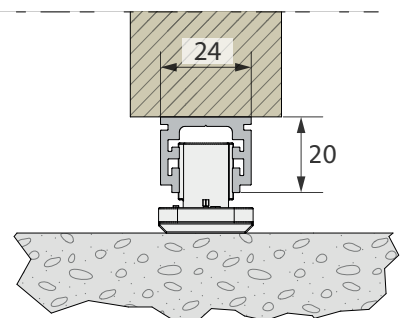
SLIDING



U-profile: **1109**
Guides: **1128 + 1131XRG**



U-profile: **1109**
Guide: **1112/2**



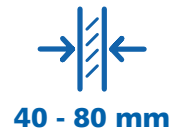
U-profile: **11109**
Guide: **1103RG**

QUOTE ONLINE
SlidSoft

Deriving solution for your project is easy!

Enter the dimensions of your opening and choose additional options. Access to solution with plans.

Configurator



Ceiling mounting - single channel - 2 leaves

Synchronised configuration **WITHOUT** PELMET:

Track	Rollers	Plates	Track stops (your choice)	Synchronisation	Lower guide
					Your choice (see below)
11208P	11282LXA4	0026XA4	11286XA2 or 11287XA2	11286XA2-SYN + 11291 + 10172	

MANTION EXCLUSIVE

1310BR-1
Sunshade stop kit
See p.57

Synchronised configuration **WITH** PELMET:

Track	Rollers	Plates	Track stops (your choice)	Pelmet + brackets	Synchronisation	Lower guide
						Your choice (see below)
11208P	11282LXA4	0026XA4	11286XA2 or 11287XA2	11261 + 11294A	11286XA2-SYN + 11291 + 10172	

Components list:

TRACK

11208P/600 Raw aluminium track, section 39 x 36 mm, drilled every 450 mm. Length = 6 m.

ROLLER - PLATE - TRACK STOPS

ROLLER

11282LXA4 Roller mounted on ball bearings, A4 stainless steel M8 screw (93 mm). max. weight **120 kg**/panel.

PLATE

0026XA4 A4 stainless steel plate to be screwed on edge.

TRACK STOPS

11286XA2 Track stop with two anchoring points. Supplied with A2 stainless steel fasteners.

11287XA2 Track stop with two anchoring points. The clamp holds the panel in the open or closed position. Supplied with A2 stainless steel fasteners.

PELMET & BRACKETS - leaves thickness: 60 mm max.

11261/...* Raw aluminium pelmet. Length = 2 / 3 and 6 m.

11294A Set of 5 anodised aluminium mounting brackets. For fixing the pelmet 11261. Supplied with A4 stainless steel fasteners. Fastened every 450 mm.

SYNCHRONISATION

11286XA2-SYN Track stop with integrated return pulley.

11291 A2 stainless steel joining bracket.

10172/... Reinforced cog belt. Length = 2.5 / 5 / 7.5 / 10 / 15 / 25 and 50 m.

LOWER GUIDE

U-PROFILE

1110XA2/... Profil U 30x30 en INOX A2. Length = 3 / 4 / 5 and 6 m.

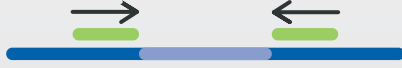
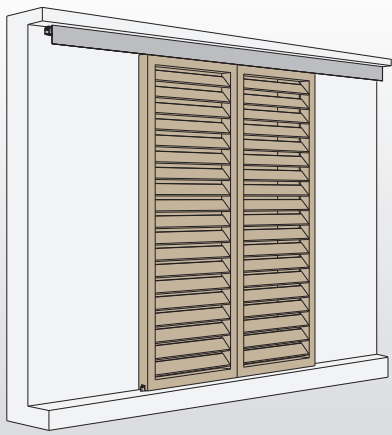
GUIDES

1110GDL White nylon slider to be screwed in, 100 x 25 x 25 mm. For U-profile 1110 (30 x 30 mm).

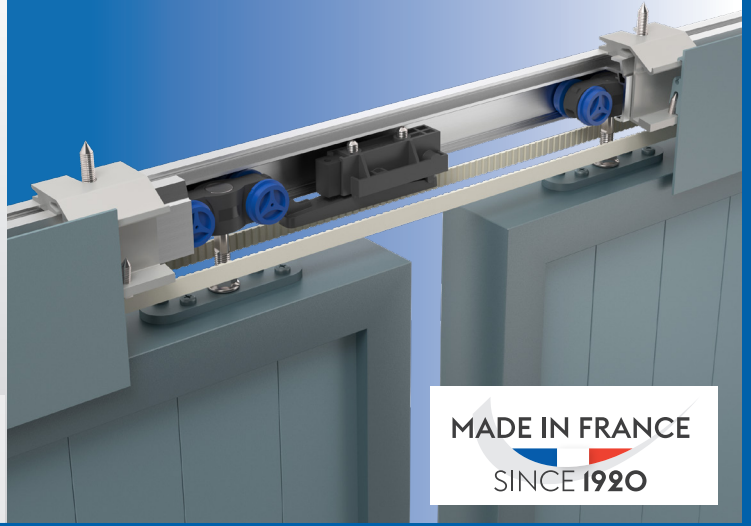
11110GU Grey plastic slider to be screwed in. For U-profile 1110 (30 x 30 mm).

Other U-profile and guides available p.44-46

*other lengths available on request

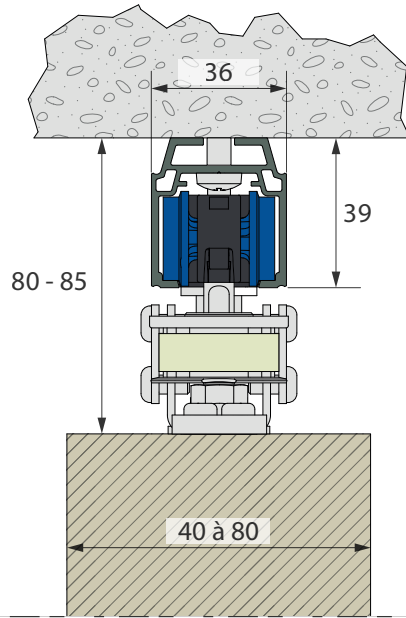
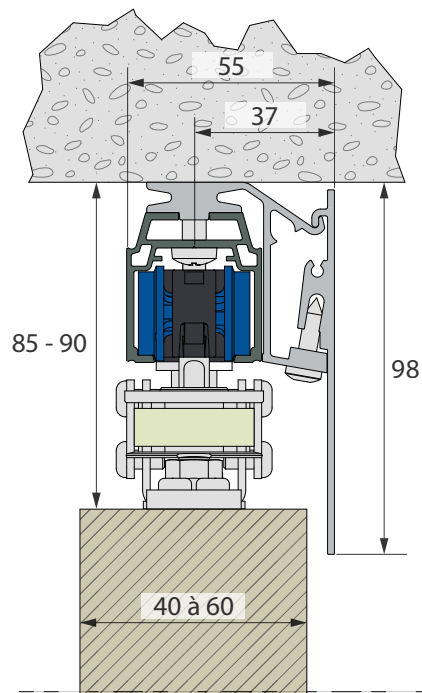


Ceiling mounting - single channel - 2 synchronised symmetrical leaves

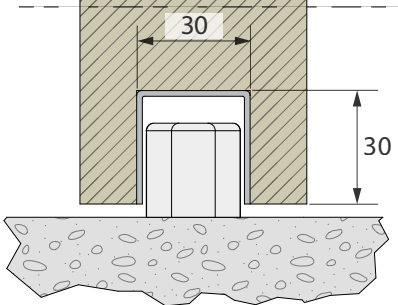


MADE IN FRANCE
SINCE 1920

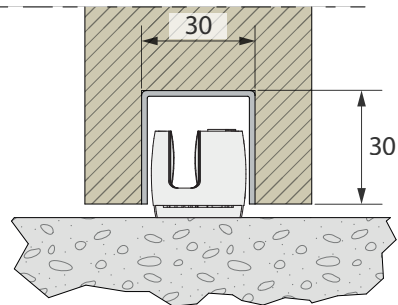
SLIDING



«shade screen»
configuration without pelmet
leaf thickness:
up to 80 mm



U-profile: **1110XA2**
Guide: **1110GDL**



U-profile: **1110XA2**
Guide: **1110GU**

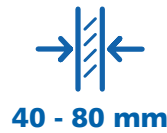
QUOTE
ONLINE
SlidSoft

Deriving solution for your project is easy!

Enter the dimensions of your opening and choose additional options. Access to solution with plans.



Configurator



Wall mounting - single channel - 2 leaves

Configuration SYNCHRONISÉE

Track	Brackets	Rollers	Plates	Track stops (your choice)	Pelmet + end caps
11208	11293D	11282LXA4	0026XA4	11286XA2 or 11287XA2	11264L + 11267L

Synchronisation			Lower guide
			Your choice (see below)
11286XA2-SYN	+ 11291	+ 10172	

MANTION EXCLUSIVE

1310BR-1

Sunshade stop kit
See p.57

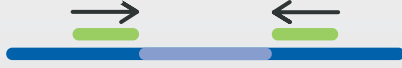
Components list:

TRACK & MOUNTING		
	11208/...*	Raw aluminium track, section 39 x 36 mm. Length = 2 / 3 and 6 m.
	11293D	Adjustable fixing bracket in raw aluminium. Supplied with A2 stainless steel fasteners. Fastened every 450 mm at most.
*other lengths available on request		
ROLLER - PLATE - TRACK STOPS		
ROLLER		
	11282LXA4	Monture équipée de 4 galets, axes montés sur roulements à billes, vis M8 en INOX A4 (93 mm). 120 kg max. / panneau.
PLATE		
	0026XA4	Platine en INOX A4 à visser sur chant.
TRACK STOPS		
	11286XA2	Track stop with two anchoring points. Supplied with A2 stainless steel fasteners.
	11287XA2	Track stop with two anchoring points. The clamp holds the panel in the open or closed position. Supplied with A2 stainless steel fasteners.
PELMET & END CAPS		
	11264L/...*	Raw aluminium pelmet. Length = 2 / 3 and 6 m.
	11267L	Set of pelmet end caps 11264L, including: 2 raw aluminium end caps, 2 pelmet fastening clamps, 8 A4 stainless steel fastening screws.
	11269	Set of 5 additional clamps in anodised aluminium for fixing the pelmet to the brackets. For use when the pelmet is longer than 3 m. (in addition to the two clamps already supplied in the end cap kit).

*other lengths available on request

SYNCHRONISATION		
	11286XA2-SYN	Track stop with integrated return pulley.
	11291	A2 stainless steel joining bracket.
	10172/...	Reinforced cog belt. Length = 2.5 / 5 / 7.5 / 10 / 15 / 25 and 50 m.
LOWER GUIDE		
U-PROFILE		
	1110XA2/...	30X30 A2 stainless steel U-profile. Length = 3 / 4 / 5 and 6 m.
GUIDES		
	1110GDL	White nylon slider to be screwed in, 100 x 25 x 25 mm. For U-profile 1110 (30 x 30 mm).
	11110GU	Grey plastic slider to be screwed in. For U-profile 1110 (30 x 30 mm).

Other U-profile and guides available p.44-46

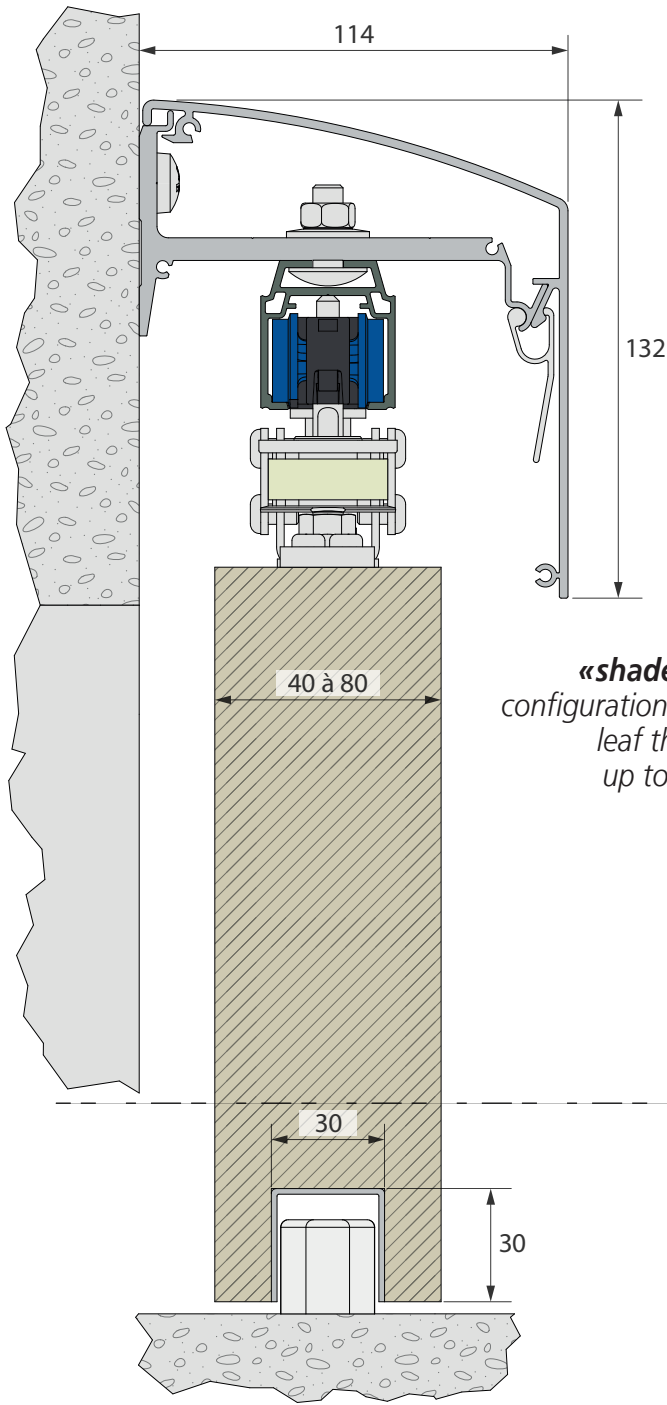


Wall mounting - single channel - 2 synchronised symmetrical leaves



MADE IN FRANCE
SINCE 1920

SLIDING



«shade screen»
configuration without pelmet
leaf thickness:
up to 80 mm

U-profile: **1110XA2**
Guide: **1110GDL**

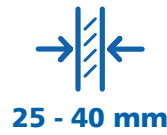
U-profile: **1110XA2**
Guide: **11110GU**

QUOTE ONLINE
SlidSoft

Deriving solution for your project is easy!

Enter the dimensions of your opening and choose additional options. Access to solution with plans.

Configurator



Wall mounting - double channel - 2 leaves

Configuration:

Track	Brackets	Rollers	Plates	Track stops	Pelmet + end caps
11208	11293D	11280LXA2	0026XA2	11286XA2 + 11287XA2	11264L + 11267L

Synchronisation				Lower guide
				Mantion® recommendation (see below)
10190	+ 10192	+ 10171	+ 10172	

Components list:

TRACK & MOUNTING

11208/...* Raw aluminium track, section 39 x 36 mm. Length = 2 / 3 and 6 m.

11293D Adjustable fixing bracket in raw aluminium. Supplied with A2 stainless steel fasteners. Fastened every 660 mm at most.

*other lengths available on request

ROLLER - PLATES - TRACK STOPS

ROLLER

11280LXA2 Roller mounted on ball bearings, A2 stainless steel M8 screw (93 mm). max. weight **80 kg**/panel.

PLATE

0026XA2 A2 stainless steel plate to be screwed on edge. Leaf thickness: 25 mm min.

TRACK STOPS

11286XA2 Track stop with two anchoring points. Supplied with A2 stainless steel fasteners.

11287XA2 Track stop with two anchoring points. The clamp holds the panel in the open or closed position. Supplied with A2 stainless steel fasteners.

PELMET & END CAPS

11264L/...* Raw aluminium pelmet. Length = 2 / 3 and 6 m.

11267L Set of pelmet end caps **11264L**, including: 2 raw aluminium end caps, 2 pelmet fastening clamps, 8 A4 stainless steel fastening screws.

11269 Set of 5 additional clamps in anodised aluminium for fixing the pelmet to the brackets. For use when the pelmet is longer than 3 m. (in addition to the two clamps already supplied in the end cap kit).

*other lengths available on request

SYNCHRONISATION

10190 Offset return pulley.

10192 A2 stainless steel driving bracket.

10171 A2 stainless steel fixed point assembly.

10172/... Reinforced cog belt. Length = 2.5 / 5 / 7.5 / 10 / 15 / 25 and 50 m.

LOWER GUIDE

U-PROFILE

1109/... 25x17 zinc-plated steel U-profile. Length = 2 / 3 / 4 / 5 and 6 m.

GUIDES

1131XRG Simple plastic slider on A2 stainless steel tiltable plate. For U-profiles 14 to 30 mm (1109).

1131DXRG Double plastic slider on A2 stainless steel tiltable plate. For U-profiles 14 to 30 mm (1109).

1128 Adjustable guide with 2 flexible-coated guide rollers, A2 stainless steel bracket. For U-profile 1109 (25 x 17 mm).

1128DRG Double plastic slider on A2 stainless steel bracket. For U-profiles 14 to 30 mm (1109).

Other U-profile and guides available p.44-46

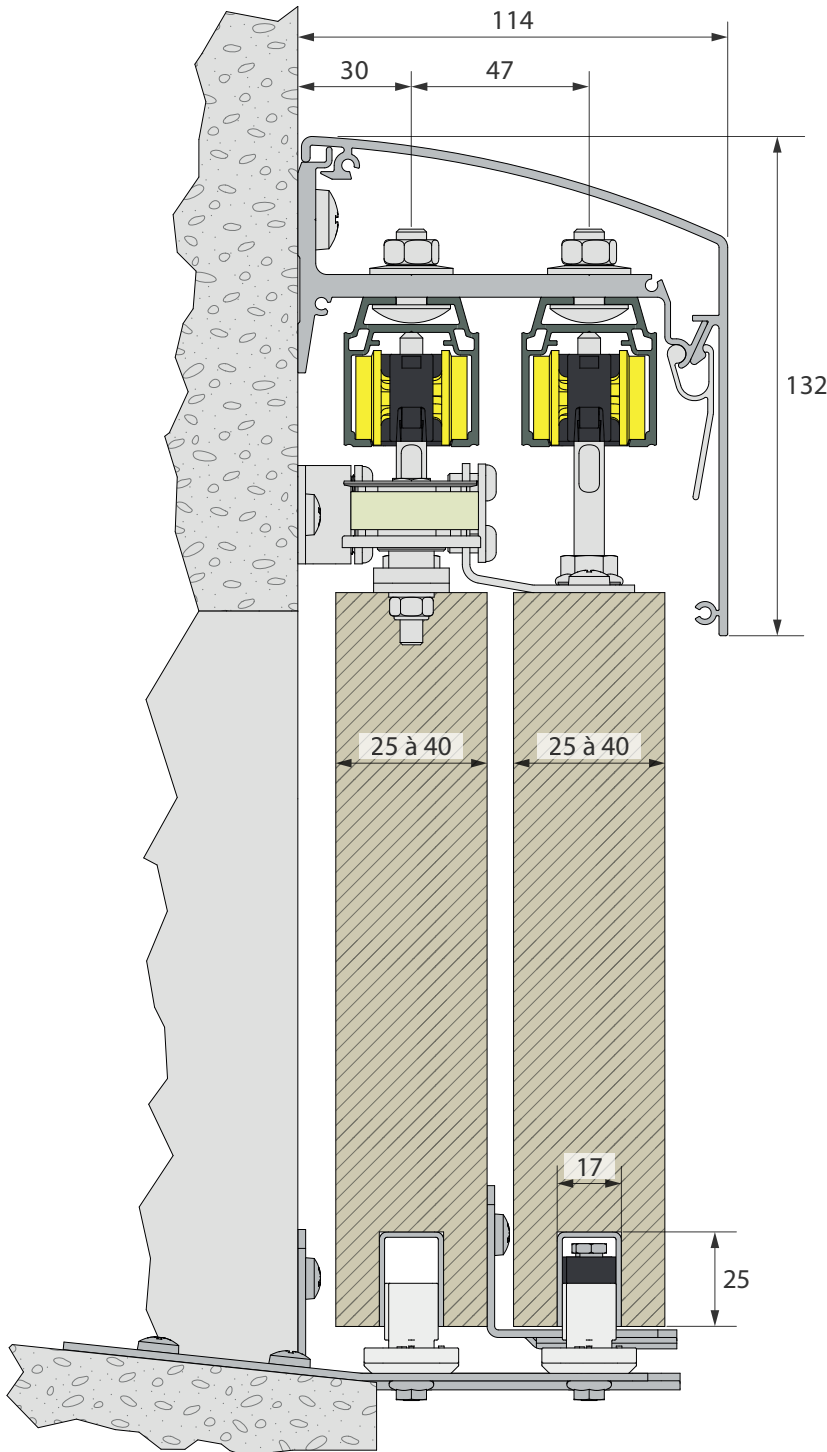
WIN-Slide 2



MADE IN FRANCE
SINCE 1920

SLIDING

Wall mounting - double channel - 2 telescopic leaves



QUOTE
ONLINE
SlidSoft

Deriving solution
for your project is
easy!

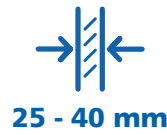
Enter the
dimensions of
your opening and
choose additional
options.
Access to
solution with
plans.



Configurator

U-profile: 1109

Guides: 1131XRG + 1131DXRG + 1128 + 1128DRG



Wall mounting - double channel - 3 leaves

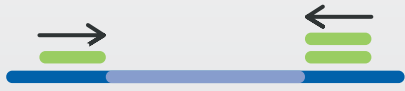
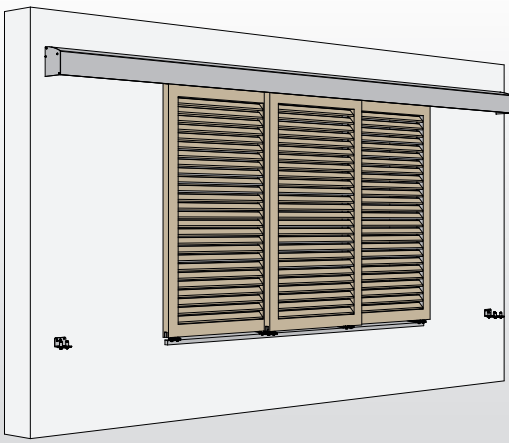
Configuration

Track	Brackets	Rollers	Plates	Track stops	Pelmet + end caps	
11208	11293D	11280LXA2	0026XA2	11286XA2 + 11287XA2	11264L + 11267L	
Synchronisation						Lower guide
						Mantion® recommendation (see below)
11286XA2-SYN + 10190 + 11291 + 10192 + 10171 + 10172 + 11174						

Components list:

TRACK & MOUNTING		SYNCHRONISATION	
	11208/...* Raw aluminium track, section 39 x 36 mm. Length = 2 / 3 and 6 m.		11286XA2-SYN Track stop with integrated return pulley.
	11293D Adjustable fixing bracket in raw aluminium. Supplied with A2 stainless steel fasteners. Fastened every 660 mm at most.		10190 Offset return pulley.
<i>*other lengths available on request</i>			11291 A2 stainless steel joining bracket.
ROLLER - PLATES - TRACK STOPS			10192 A2 stainless steel driving bracket.
ROLLER			10171 A2 stainless steel fixed point assembly.
	11280LXA2 Roller mounted on ball bearings, A2 stainless steel M8 screw (93 mm). max. weight 80 kg /panel.		10172/... Reinforced cog belt. Length = 2.5 / 5 / 7.5 / 10 / 15 / 25 and 50 m.
PLATE			11174 Drive bracket (binds the two belts together to synchronise the 3rd leaf).
	0026XA2 A2 stainless steel plate to be screwed on edge. Leaf thickness: 25 mm min.	LOWER GUIDE	
TRACK STOPS		U-PROFILE	
	11286XA2 Track stop with two anchoring points. Supplied with A2 stainless steel fasteners.		1109/... 25x17 zinc-plated steel U-profile. Length = 2 / 3 / 4 / 5 and 6 m.
	11287XA2 Track stop with two anchoring points. The clamp holds the panel in the open or closed position. Supplied with A2 stainless steel fasteners.	GUIDES	
PELMET & END CAPS			1131XRG Simple plastic slider on A2 stainless steel tilttable plate. For U-profiles 14 to 30 mm (1109).
	11264L/...* Raw aluminium pelmet. Length = 2 / 3 and 6 m.		1131DXRG Double plastic slider on A2 stainless steel tilttable plate. For U-profiles 14 to 30 mm (1109).
	11267L Set of pelmet end caps 11264L , including: 2 raw aluminium end caps, 2 pelmet fastening clamps, 8 A4 stainless steel fastening screws.		1128 Adjustable guide with 2 flexible-coated guide rollers, A2 stainless steel bracket. For U-profile 1109 (25 x 17 mm).
	11269 Set of 5 additional clamps in anodised aluminium for fixing the pelmet to the brackets. For use when the pelmet is longer than 3 m. (in addition to the two clamps already supplied in the end cap kit).		1128DRG Double plastic slider on A2 stainless steel bracket. For U-profiles 14 to 30 mm (1109).
<i>*other lengths available on request</i>			

Other U-profile and guides available p.44-46

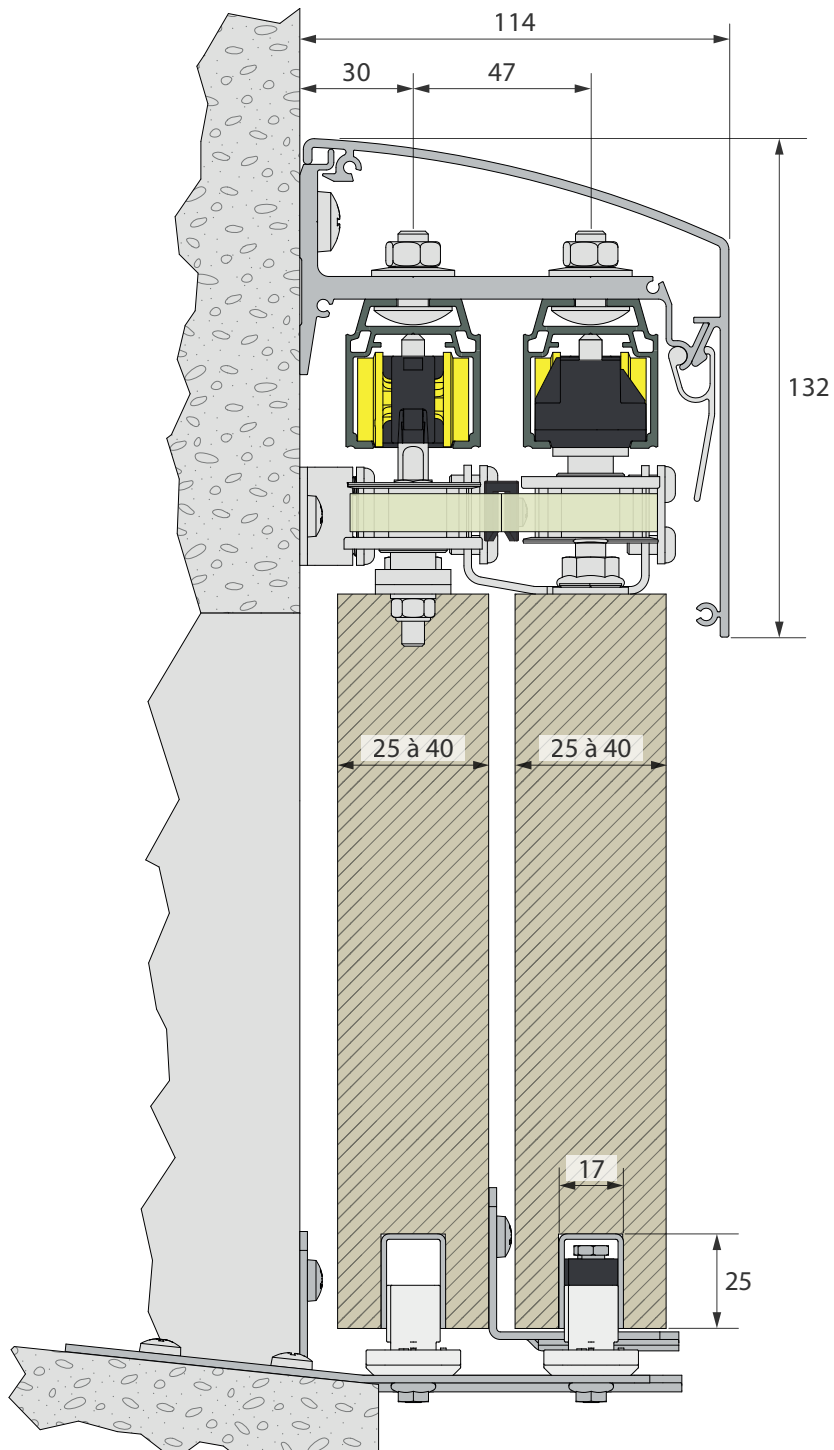


Wall mounting - double channel - 3 telescopic leaves



MADE IN FRANCE
SINCE 1920

SLIDING



U-profil: **1109**

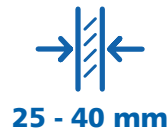
Guides: **1131XRG + 1131DXRG + 1128 + 1128DRG**

QUOTE ONLINE
SlidSoft

Deriving solution for your project is easy!

Enter the dimensions of your opening and choose additional options. Access to solution with plans.

Configurator



Wall mounting - double channel - 4 leaves

Configuration

Track	Brackets	Rollers	Plates	Track stops	Pelmet + end caps
11208	11293D	11280LXA2	0026XA2	11286XA2 + 11287XA2	11264L + 11267L

Synchronisation							Lower guide			
							Mantion® recommendation (see below)			
11286XA2-SYN	+	10190	+	11291	+	10192		+	10171	+

Components list:

TRACK & MOUNTING	
	11208/...* Raw aluminium track, section 39 x 36 mm. Length = 2 / 3 and 6 m.
	11293D Adjustable fixing bracket in raw aluminium. Supplied with A2 stainless steel fasteners. Fastened every 660 mm at most.

*other lengths available on request

ROLLER - PLATES - TRACK STOPS	
ROLLER	
	11280LXA2 Roller mounted on ball bearings, A2 stainless steel M8 screw (93 mm). max. weight 80 kg /panel.
PLATE	
	0026XA2 A2 stainless steel plate to be screwed on edge. Leaf thickness: 25 mm min.

TRACK STOPS	
	11286XA2 Track stop with two anchoring points. Supplied with A2 stainless steel fasteners.
	11287XA2 Track stop with two anchoring points. The clamp holds the panel in the open or closed position. Supplied with A2 stainless steel fasteners.

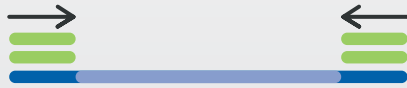
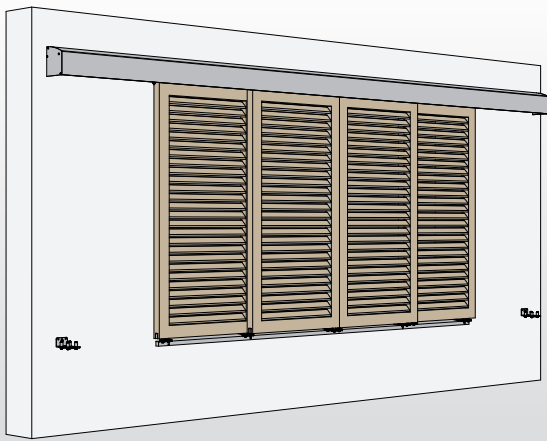
PELMET & END CAPS	
	11264L/...* Raw aluminium pelmet. Length = 2 / 3 and 6 m.
	11267L Set of pelmet end caps 11264L , including: 2 raw aluminium end caps, 2 pelmet fastening clamps, 8 A4 stainless steel fastening screws.
	11269 Set of 5 additional clamps in anodised aluminium for fixing the pelmet to the brackets. For use when the pelmet is longer than 3 m. (in addition to the two clamps already supplied in the end cap kit).

*other lengths available on request

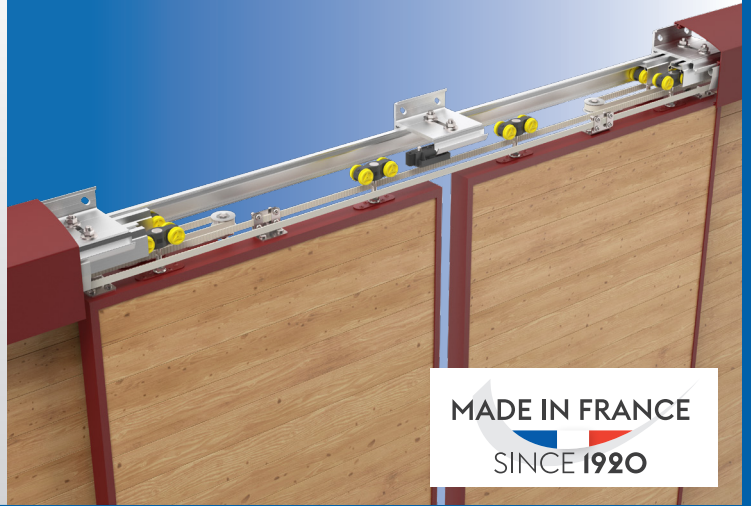
SYNCHRONISATION	
	11286XA2-SYN Track stop with integrated return pulley.
	10190 Offset return pulley.
	11291 A2 stainless steel joining bracket.
	10192 A2 stainless steel driving bracket.
	10171 A2 stainless steel fixed point assembly.
	10172/... Reinforced cog belt. Length = 2.5 / 5 / 7.5 / 10 / 15 / 25 and 50 m.

LOWER GUIDE	
U-PROFILE	
	1109/... 25x17 zinc-plated steel U-profile. Length = 2 / 3 / 4 / 5 and 6 m.
GUIDES	
	1131XRG Simple plastic slider on A2 stainless steel tiltable plate. For U-profiles 14 to 30 mm (1109).
	1131DXRG Double plastic slider on A2 stainless steel tiltable plate. For U-profiles 14 to 30 mm (1109).
	1128 Adjustable guide with 2 flexible-coated guide rollers, A2 stainless steel bracket. For U-profile 1109 (25 x 17 mm).
	1128DRG Double plastic slider on A2 stainless steel bracket. For U-profiles 14 to 30 mm (1109).

Other U-profile and guides available p.44-46

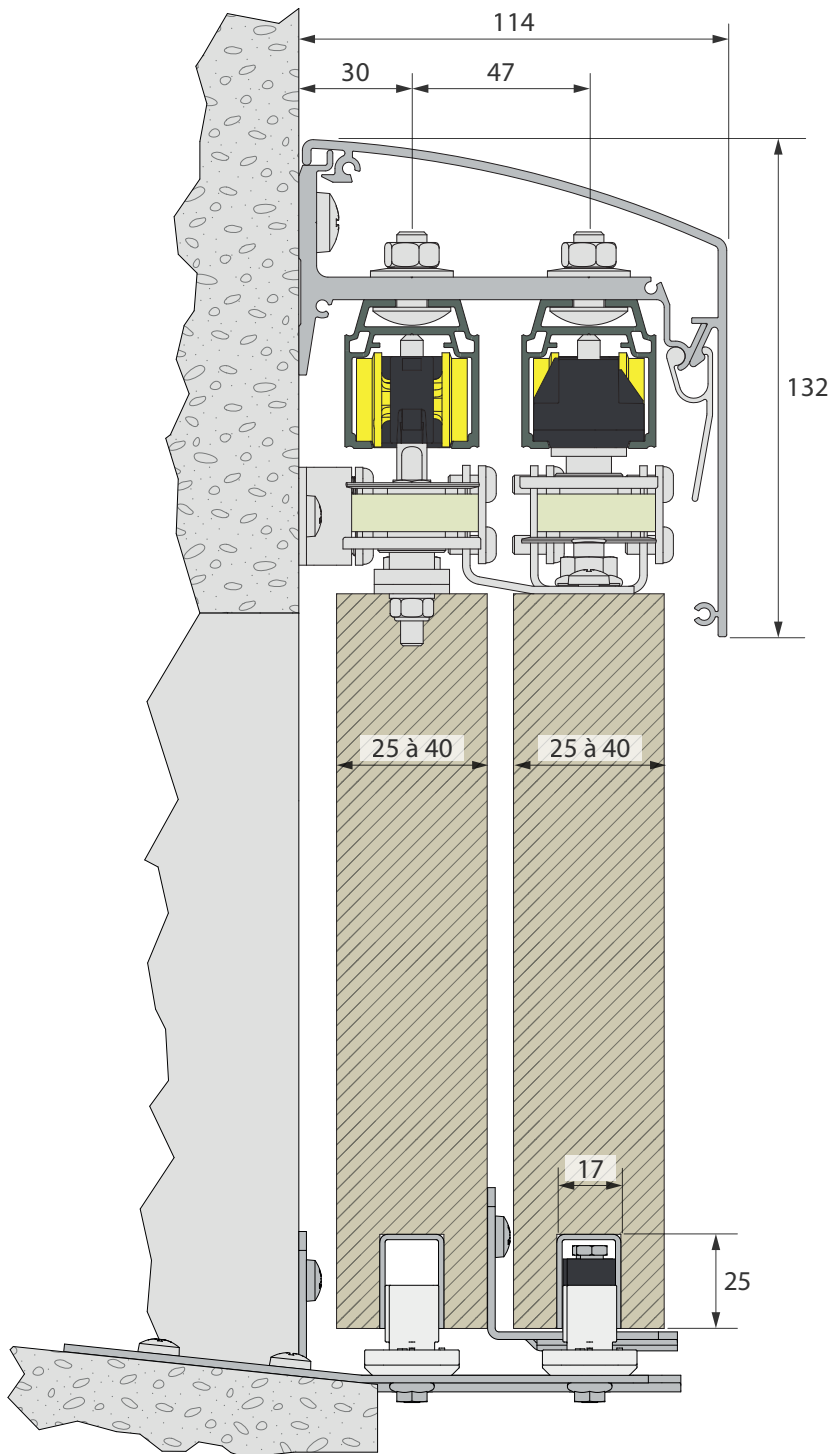


Wall mounting - double channel - 4 telescopic leaves



MADE IN FRANCE
SINCE 1920

SLIDING



U-profile: **1109**

Guides: **1131XRG + 1131DXRG + 1128 + 1128DRG**

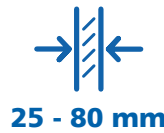
QUOTE
ONLINE
SlidSoft

Deriving solution for your project is easy!

Enter the dimensions of your opening and choose additional options. Access to solution with plans.



Configurator



Coastal application

Components list (coastal application):

ROLLERS - PLATES - TRACK STOPS

ROLLERS



11280XA4 Roller mounted on ball bearings, A4 stainless steel M8 screw (59 mm). max. weight **80 kg**/panel.



11280LXA4 Roller mounted on ball bearings, A4 stainless steel M8 screw (93 mm). max. weight **80 kg**/panel.



11282LXA4 Roller mounted on ball bearings, A4 stainless steel M8 screw (93 mm). max. weight **120 kg**/panel.

PLATE



0026XA4 A4 stainless steel plate to be screwed on edge. For leaves up to 120 Kg.

TRACK STOPS



11286XA4 Track stop with two anchoring points. Supplied with A4 stainless steel fasteners.



11287XA4 Track stop with two anchoring points. The clamp holds the panel in the open or closed position. Supplied with A4 stainless steel fasteners.

TRACK & PELMET - CEILING MOUNTING

TRACK



11208AP/600* Anodised aluminium track, section 39 x 36 mm, drilled every 450 mm. Length = 6 m.

PELMET & BRACKETS - single channel - 80 and 120 Kg



11261/* Raw aluminium pelmet. Length = 2 / 3 and 6 m.



11294A Set of 5 anodised aluminium mounting brackets. For fixing the pelmet 11261. Supplied with A4 stainless steel fasteners. Fastened every 450 mm.

**other lengths available on request*

TRACK & PELMETS - WALL MOUNTING

TRACK



11208A/* Anodised aluminium track, section 39 x 36 mm. Length = 2 / 3 and 6 m.

PELMET & BRACKETS - 1 channel - 80 Kg



11293A Single adjustable fixing bracket in anodised aluminium. Supplied with A4 stainless steel fasteners. Fastened every 660 mm at most.



11263/* Raw aluminium pelmet. Length = 2 / 3 and 6 m.

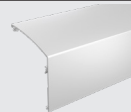


11266 Set of pelmet end caps **11263**, including: 2 raw aluminium end caps, 2 pelmet fastening clamps, 8 A4 stainless steel fastening screws.

PELMET & BRACKETS - double channel - 80 Kg & single channel - 120 Kg



11293DA Double adjustable fixing bracket in anodised aluminium. Supplied with A4 stainless steel fasteners. Fastened every 660 mm at most (double channel - 80 Kg) Fastened every 450 mm at most (single channel - 120 Kg)



11264L/* Raw aluminium pelmet. Length = 2 / 3 and 6 m.



11267L Set of pelmet end caps **11264L**, including: 2 raw aluminium end caps, 2 pelmet fastening clamps, 8 A4 stainless steel fastening screws.

ACCESSOIRES



11269 Set of 5 additional clamps in anodised aluminium for fixing the pelmet to the brackets. For use when the pelmet is longer than 3 m. (in addition to the two clamps already supplied in the end cap kit).

**other lengths available on request*

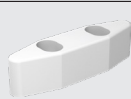
LOWER GUIDE

U-PROFILE



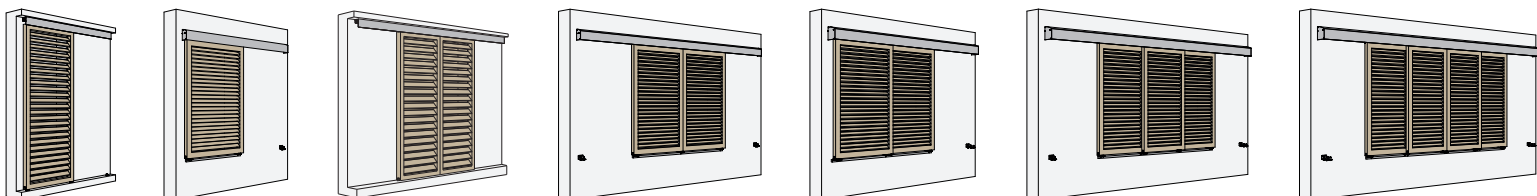
1110XA4/* 30X30 A4 stainless steel U-profile. Length = 3 and 6 m.

GUIDE



1110GDL White nylon slider to be screwed in, 100 x 25 x 25 mm. For U-profile 1110 (30 x 30 mm).

Possible configurations:



316 or A4 STAINLESS STEEL:

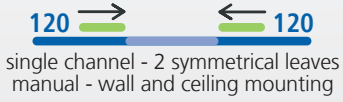
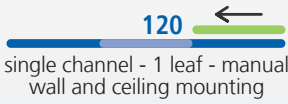
also known as marine grade STAINLESS STEEL – is designed for use in polluted, aggressive and marine outdoor environments. The addition of 2% molybdenum increases its pitting corrosion resistance, making it the recommended grade for use in coastal environments.

WIN-Slide 2

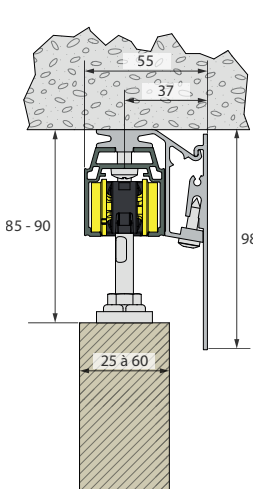
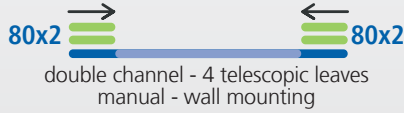


MADE IN FRANCE
SINCE 1920

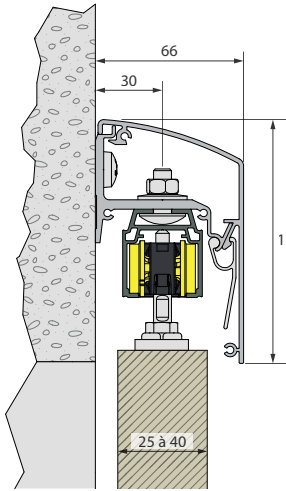
SLIDING



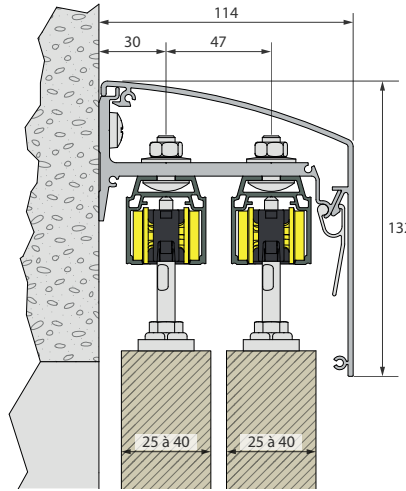
maximum leaf weight depending on configuration



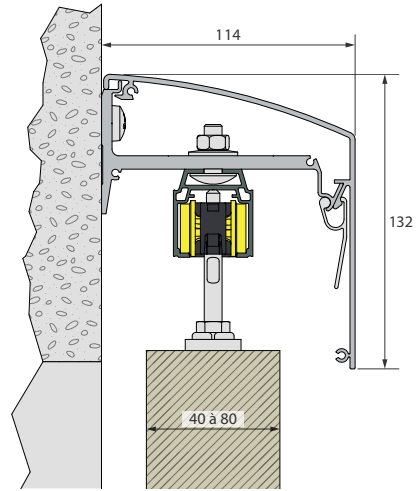
Ceiling mounting
single channel - 80 Kg



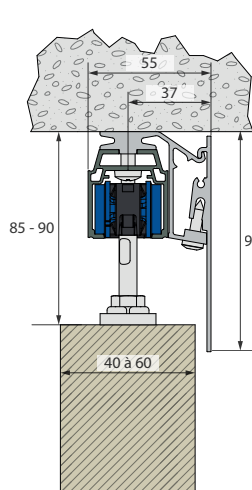
Wall mounting
single channel - 80 Kg



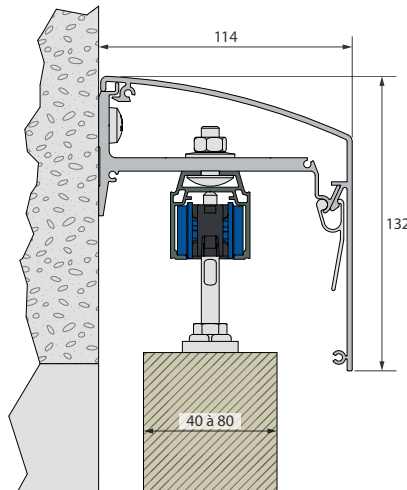
Wall mounting
double channel - 80 Kg



Wall mounting
double channel - 80 Kg
("shade screen" mounting)



Ceiling mounting
1 channel - 120 Kg



Wall mounting
1 channel - 120 Kg

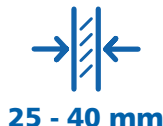
QUOTE ONLINE
SlidSoft

Deriving solution for your project is easy!

Enter the dimensions of your opening and choose additional options.
Access to solution with plans.



Configurator



Wall mounting - single voie - 1 or 2 leaves

Item number: **WSLIDE-2RGV1 (manual)**

Set for 1 leaf weighing up to 80 kg - Opening up to 900 mm wide

Track	Brackets	Rollers	Plates	Track stops	Lower guide
11208/200 x1	11293 x4	11280XA2 x2	0026XA2 x2	11286XA2 x2	1109 x1 + 1128ARG x1 + 1131XRG x2

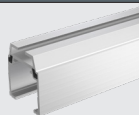
Item number: **WSLIDE-2RGV2 (manual - without synchronisation)**

Set for 2 leaves weighing up to 80 kg - Opening up to 1900 mm wide

Track	Track connector	Brackets	Rollers	Plates	Track stops	Lower guide
11208/200 x2	11288MXA4 x1	11293 x8	11280XA2 x4	0026XA2 x4	11286XA2 x4	1109 x2 + 1128ARG x2 + 1131XRG x3

Components list:

TRACK & BRACKETS



11208/200 Raw aluminium track, section 39 x 36 mm. Length = 2 m.



11293 Adjustable fixing bracket in raw aluminium. Supplied with A2 stainless steel fasteners. Fastened every 660 mm at most.



11293MXA4 A4 stainless steel track connector (for track 11208).

ROLLER - PLATES - TRACK STOP

ROLLER



11280XA2 Roller mounted on ball bearings, A2 stainless steel M8 screw (59 mm). max. weight **80 kg**/panel.

PLATE



0026XA2 A2 stainless steel plate to be screwed on edge. Leaf thickness: 25 mm min.

TRACK STOP



11286XA2 Track stop with two anchoring points. Supplied with A2 stainless steel fasteners.

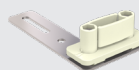
LOWER GUIDE

U-PROFILE



1109/... 25x17 zinc-plated steel U-profile. Length = 2 / 3 / 4 / 5 and 6 m.

GUIDES

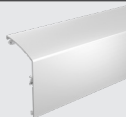


1131XRG Simple plastic slider on A2 stainless steel tiltable plate. For U-profiles 14 to 30 mm (1109).



1128ARG Simple plastic adjustable guide on steel bracket with cathophoretic coating + RAL 9010 white epoxy paint. For U-profiles 14 to 30 mm (1109).

OPTION: PELMET & END CAPS



11263/...* Raw aluminium pelmet. Length = 2 / 3 and 6 m.



11266 Set of pelmet end caps **11263**, including: 2 raw aluminium end caps, 2 pelmet fastening clamps, 8 A4 stainless steel fastening screws.



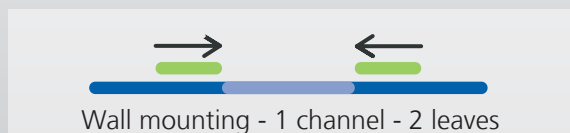
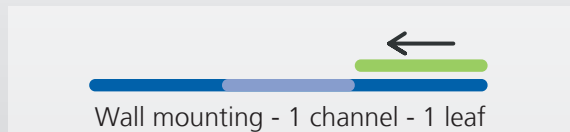
11269 Set of 5 additional clamps in anodised aluminium for fixing the pelmet to the brackets. For use when the pelmet is longer than 3 m. (in addition to the two clamps already supplied in the end cap kit).

*other lengths available on request

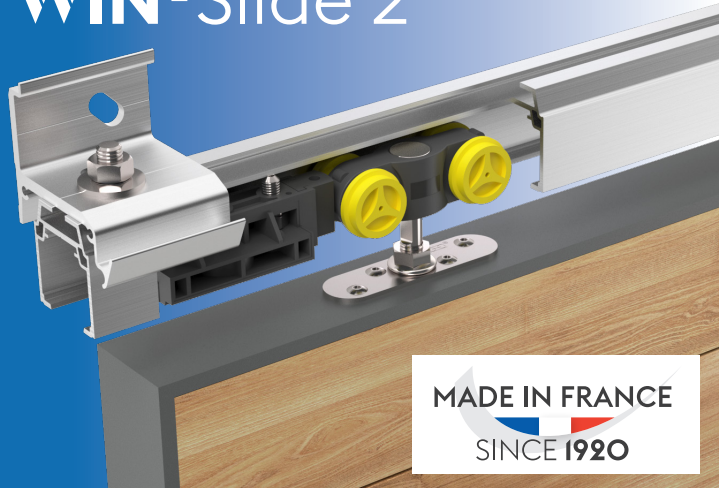
Make the job easier by using WIN-SLIDE 2 ready-to-install kits.

PRACTICAL: a single kit containing everything you need for:

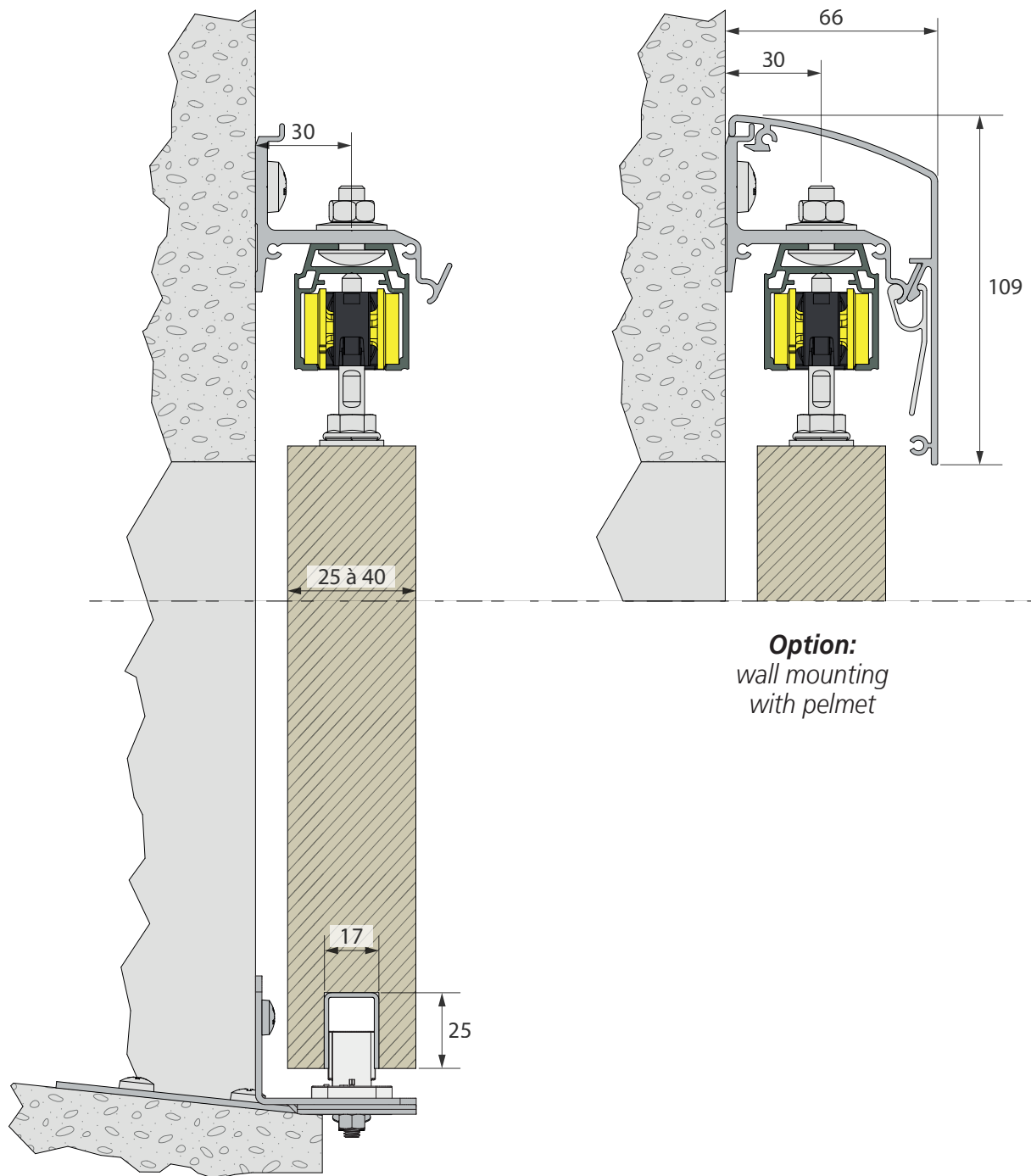
- 1 leaf for openings up to 900 mm
- 2 leaves sliding in opposite directions up to 1900 mm



SETS WIN-Slide 2



SLIDING



Option:
wall mounting
with pelmet

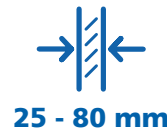
QUOTE ONLINE
SlidSoft

Deriving solution for your project is easy!

Enter the dimensions of your opening and choose additional options. Access to solution with plans.

Configurator

U-profile: **1109**
Guides: **1131XRG + 1128ARG**



Motorisation for sliding shutters

Components list:

ROLLERS - PLATES - TRACK STOPS

ROLLERS		
	11280LXA2	Roller mounted on ball bearings, A2 stainless steel M8 screw (93 mm). max. weight 80 kg /panel.

	11282LXA4	Roller mounted on ball bearings, A4 stainless steel M8 screw (93 mm). max. weight 120 kg /panel.
--	------------------	---

PLATE		
	0026XA2	A2 stainless steel plate to be screwed on edge. Leaf thickness: 25 mm min. For leaves up to 80 Kg.

	0026XA4	A4 stainless steel plate to be screwed on edge. For leaves up to 120 Kg.
--	----------------	--

TRACK STOP		
	11286XA2	Track stop with two anchoring points. Supplied with A2 stainless steel fasteners.

TRACK & PELMET - CEILING MOUNTING

TRACK		
	11208P/600*	Raw aluminium track, section 39 x 36 mm, drilled every 450 mm. Length = 6 m.

PELMET & BRACKETS - single channel - 80 and 120 Kg		
	11261/...*	Raw aluminium pelmet. Length = 2 / 3 and 6 m.

	11294A	Set of 5 anodised aluminium mounting brackets. For fixing the pelmet 11261. Supplied with A4 stainless steel fasteners. Fastened every 450 mm.
--	---------------	--

**other lengths available on request*

TRACK & PELMETS - WALL MOUNTING

TRACK		
	11208/...*	Raw aluminium track, section 39 x 36 mm. Length = 2 / 3 and 6 m.

PELMET & BRACKETS - 1 channel - 80 Kg		
	11293	Single adjustable fixing bracket in raw aluminium. Supplied with A2 stainless steel fasteners. Fastened every 660 mm at most.

	11263L/...*	Raw aluminium pelmet. Length = 2 / 3 and 6 m.
--	--------------------	---

	11266M	Set of pelmet end caps 11263L , including: 2 raw aluminium end caps, 2 pelmet fastening clamps, 1 bracket for the end cap on the motor side, 8 A4 stainless steel fastening screws.
--	---------------	--

PELMET & BRACKETS - double channel - 80 Kg & single channel - 120 Kg

	11293D	Double adjustable fixing bracket in anodised aluminium. Supplied with A2 stainless steel fasteners. Fastened every 660 mm at most (double channel - 80 Kg) Fastened every 450 mm at most (single channel - 120 Kg)
--	---------------	--

	11264L/...*	Raw aluminium pelmet. Length = 2 / 3 and 6 m.
--	--------------------	---

	11267M	Set of pelmet end caps 11264L , including: 2 raw aluminium end caps, 2 pelmet fastening clamps, 1 bracket for the end cap on the motor side, 8 A4 stainless steel fastening screws.
--	---------------	--

ACCESSOIRES		
	11269	Set of 5 additional clamps in anodised aluminium for fixing the pelmet to the brackets. For use when the pelmet is longer than 3 m. (in addition to the two clamps already supplied in the end cap kit).

**other lengths available on request*

MOTORIZATION ACCESSORIES

	11286XA2-SYN	Track stop with integrated return pulley.
--	---------------------	---

	10190	Offset return pulley.
--	--------------	-----------------------

	11291	A2 stainless steel joining bracket.
--	--------------	-------------------------------------

	10192	A2 stainless steel driving bracket.
--	--------------	-------------------------------------

	10171	A2 stainless steel fixed point assembly.
--	--------------	--

	11072/...	Reinforced cog belt. Length = 2.5 / 5 / 7.5 / 10 / 15 / 25 and 50 m.
--	------------------	--

	K0001170	Spare battery pack (consumable item). 2-year warranty.
--	-----------------	--

	C0012620	2.2 m cable harness extension for motor/battery. 2 extensions can be added to the standard kit for a total length of 6.6 m.
--	-----------------	---

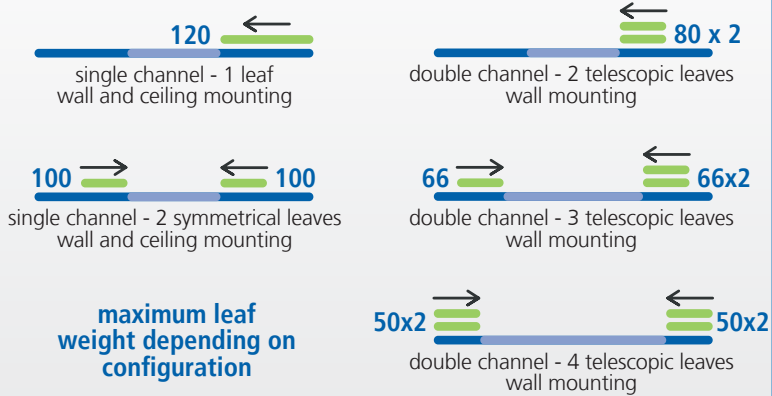
	C0004780	433.92 MHz wireless RF switch, white.
--	-----------------	---------------------------------------

QUOTE ONLINE

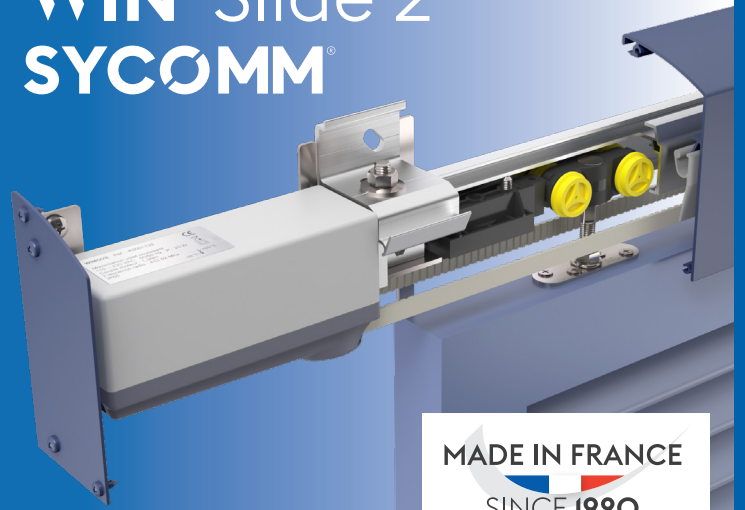
SlidSoft

Configurator

Possible configurations:



WIN-Slide 2 SYCOMM®



SLIDING

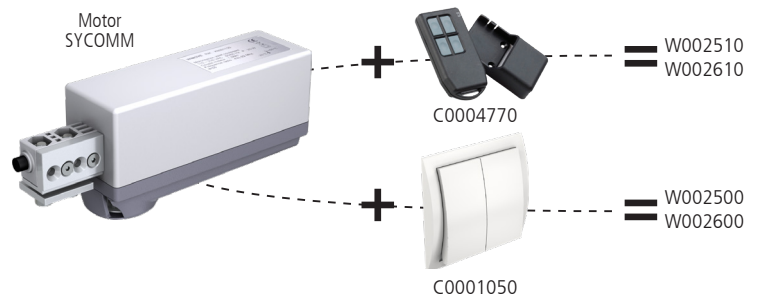
SYCOMM MOTOR - 230V POWER SUPPLY

W0002510 Drive kit (230V power supply) with wireless control, includes:
- 1 SYCOMM motor (onboard electronics) with position-holding brake*
- 1 wireless remote control C0004770

W0002610 Ditto with SYCOMM motor without position-holding brake**

W0002500 Drive kit (230V power supply) with wired control, includes:
- 1 SYCOMM motor (onboard electronics) with position-holding brake*
- 1 wired switch C0001050

W0002600 Ditto with SYCOMM motor without position-holding brake**



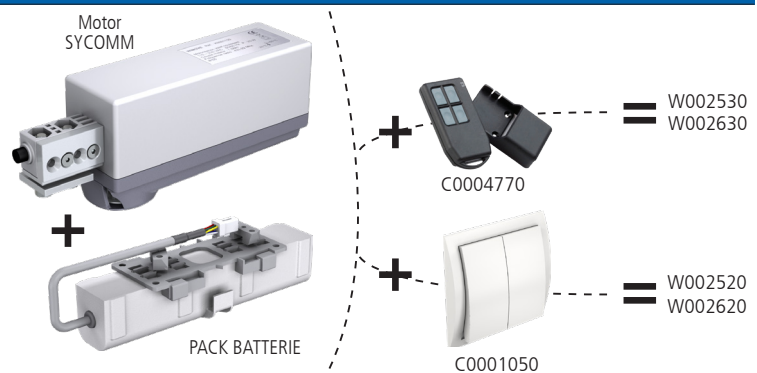
SYCOMM MOTOR WITH BATTERY PACK - 230V POWER SUPPLY

W0002530 Drive kit (230V power supply) with wireless control, includes:
- 1 SYCOMM motor (onboard electronics) with position-holding brake*
- 1 battery pack (in case of power outages) - 2-year warranty
- 1 cable harness to connect the motor to the battery
- 1 wireless remote control C0004770

W0002630 Ditto with SYCOMM motor without position-holding brake**

W0002520 Drive kit (230V power supply) with wired control, includes:
- 1 SYCOMM motor (onboard electronics) with position-holding brake*
- 1 battery pack (in case of power outages) - 2-year warranty
- 1 cable harness to connect the motor to the battery
- 1 wired switch C0001050

W0002620 Ditto with SYCOMM motor without position-holding brake**



* *Sycomm with position-holding brake: shutter is held in position: Holding force ~30 kg*

** *Sycomm without position-holding brake: the system is reversible. Operation possible by applying a force < 5 kg*

SYCOMM MOTOR

Supply voltage	110-230 V AC - 50/60 Hz
Max. power	25W
Dimensions (L x W x H)	150x50x73 mm
Degree of protection	IP55
Type of limit switch	Dynamic (stops on obstacle detection)
Motor technology	Brushless
Linear velocity	~ 60mm/s
Operating temperature	-20 à +60°C
Radio frequency	433.92MHz
Length of mains cable	3m

BATTERY PACK

Voltage	12V
Capacity	3000mA
Type	Lithium iron phosphate - LifePO4

GENERAL DATA:

Soft start and stop – Obstacle detection

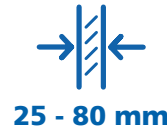
Complies with CE requirements as per:

EN60335-1:2013; EN60335-2-103:2004+A11:2009; NFP26341
EN61000-6-1:2007; EN61000-6-2:2006; EN61000-6-3:2007;
EN61000-6-4:2007; NF 26-341

Complies with the European Directives:

2006/95/EC; 2006/42/EC; 2004/108/EC; 1999/5/EC; 2002/95/EC

Note: All the data in the tables are provided for guidance only and are subject to variation according to the particular conditions of use. They are therefore not binding upon Manton. Drive system designed for domestic use and mounting under a pelmet.

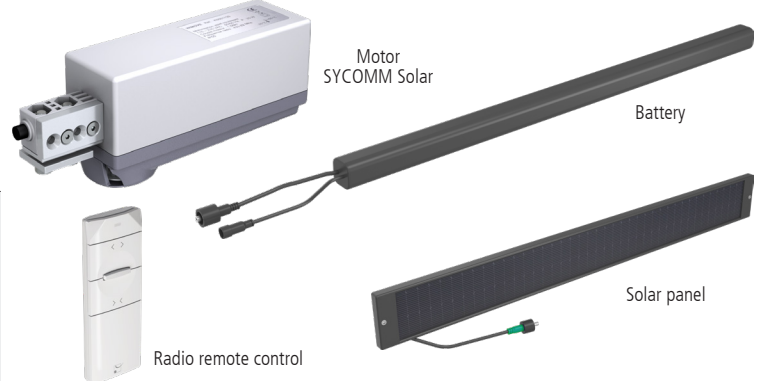


Solar motorization for sliding shutters

SYCOMM SOLAR MOTOR - RADIO CONTROL

W0002540 Solar motorisation kit (12V DC power supply), with radio control comprising:
 - 1 SYCOMM Solar motor (on-board electronics) with position-holding brake*
 - 1 C0014200 radio remote control
 - 1 solar panel
 - 1 5100 mAh battery
 Guarantee 5 years

W0002550 Solar motorisation kit (12V DC power supply), with radio control comprising:
 - 1 SYCOMM Solar motor (on-board electronics) without position-holding brake**
 - 1 C0014200 radio remote control
 - 1 solar panel
 - 1 5100 mAh battery
 Guarantee 5 years



* *Sycomm with position-holding brake: shutter is held in position: Holding force ~30 kg*

** *Sycomm without position-holding brake: the system is reversible. Operation possible by applying a force < 5 kg*

SOLAR POWER SUPPLY

K0001620 Solar battery pack, supplied with two fixing kits (one to be fixed on the wall + one to be fixed on the 11208 track).
 Guarantee 5 years.

C0014430 Re-cuttable battery cover housing electrogalvanised steel (to be painted). Fits under the lintel using the battery pack supports.
 Length = 1250 mm.

K0001630 Solar panel, supplied with screws for direct mounting on the pelmet + one adjustable wall mounting kit.
 Guarantee 5 years.

C0014340 3 m extension lead from solar motor to battery.

C0014350 3 m extension lead from solar panel to battery.

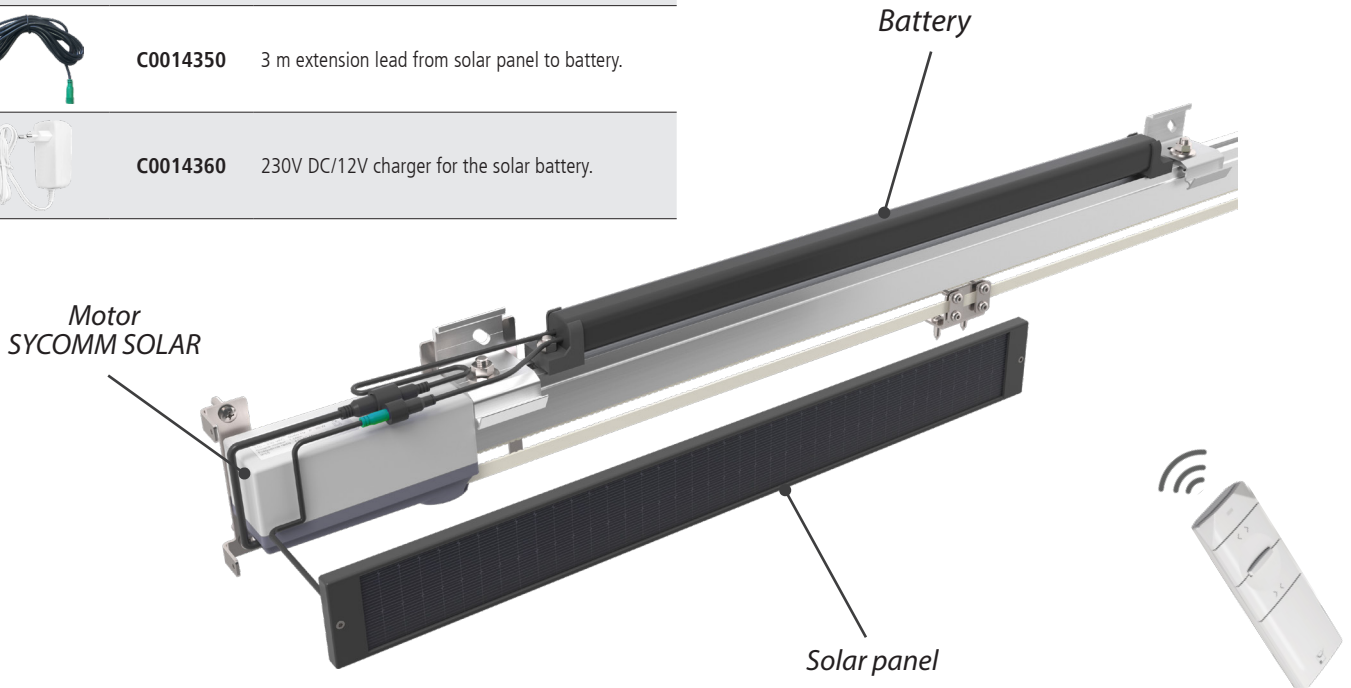
C0014360 230V DC/12V charger for the solar battery.

RADIO CONTROL

C0014200 433.92 MHz radio remote control. White colour - RAL 9016
 Guarantee 5 years.

C0014200N 433.92 MHz radio remote control. Black colour - RAL 9005
 Guarantee 5 years.

Hardware identical to SYCOMM, see components on previous page



QUOTE ONLINE
SlidSoft

Deriving solution for your project is easy!
 Enter the dimensions of your opening and choose additional options.
 Access to solution with plans.



Possible configurations:

120

single channel - 1 leaf
wall and ceiling mounting

80 x 2

double channel - 2 telescopic leaves
wall mounting

100

single channel - 2 symmetrical leaves
wall and ceiling mounting

66

double channel - 3 telescopic leaves
wall mounting

maximum leaf
weight depending on
configuration

50x2

double channel - 4 telescopic leaves
wall mounting

WIN-Slide 2 SYCOMM® Solar



NEW

MADE IN FRANCE
SINCE 1920

SLIDING



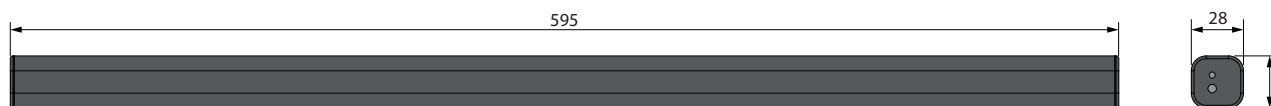
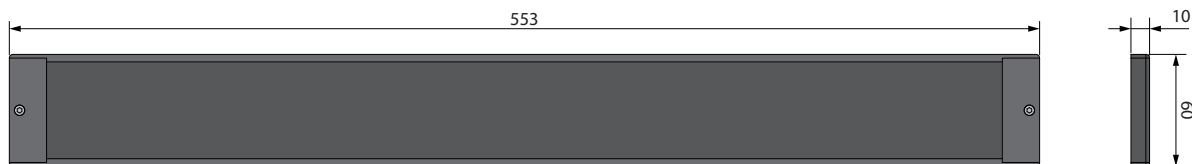
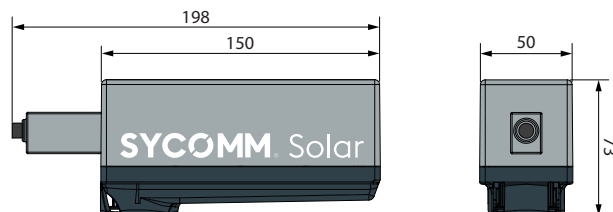
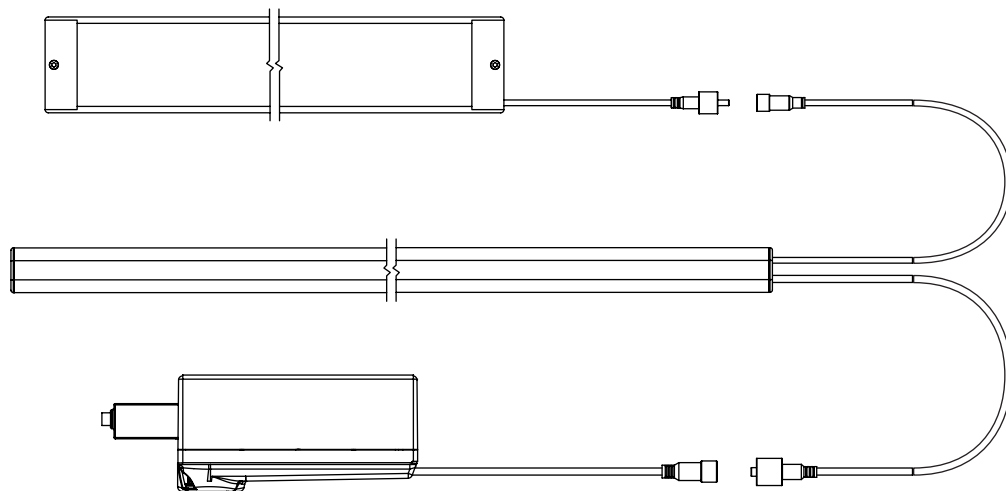
Innovation
MANTION



C0014200 C0014200N

Radio remote
Control

Plug & Play installation



SYCOMM® SOLAR MOTORIZATION

Supply voltage	12V DC
Max power	25 W
Degree of protection	IP55
Type of limit switch	Dynamique (stop on obstacle)
Motor technology	Brushless
Linear speed	~ 60mm/s
Operating temperature	-20 à +60°C
Radio frequency	433.92 MHz
Motor cable length	30 cm (optional 3m extension)

GENERAL DATA:

Soft start and stop - Obstacle detection

Complies with CE requirements as per:

EN60335-1:2013; EN60335-2-103:2004+A11:2009; NFP26341
EN61000-6-1:2007; EN61000-6-2:2006; EN61000-6-3:2007;
EN61000-6-4:2007; NF 26-341

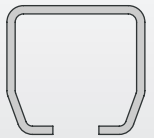
Complies with European directives :

2006/95/CE; 2006/42/CE; 2004/108/CE; 1999/5/CE; 2002/95/CE

NB: The values in the tables are given for information only, they depend on specific conditions and do not constitute a firm commitment on the part of Mantion. Motor designed for domestic use and installation under a fascia panel.

80 KG

System for sliding shutters

WIN-STH**9010**

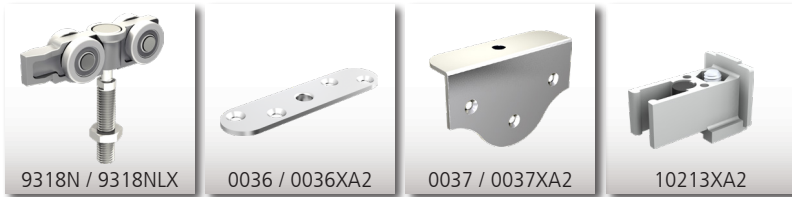
CAPACITY PER PANEL	80 kg
PANEL THICKNESS	27-40 MM
PANEL TYPES	wood, aluminium, PVC...
TRACK	STEEL / A2 SST (304L)
MOVEMENT	STRAIGHT

MANTION®

MADE IN FRANCE
SINCE 1920

STEEL - 80 KG**ROLLERS & ACCESSORIES - 9010**

Item no.	Description
9318N	Roller on nylon-coated ball bearing M10
0036	Straight plate to be screwed on edge – min. panel 20 mm
0037	Plate to be screwed on flat side (95 x 62 mm) – min. panel 30 mm
10213XA2	Claw stop to be screwed into the track

**TRACKS & ACCESSORIES - 9010**

9010/...	HERCULE track in galvanised steel. L = 2 / 2.5 / 3 / 10 / 4 / 5 and 6 m
9011	Box bracket
10185	Fixture for mounting box bracket
10186/250	Galvanised steel pelmet for track 9010 – L = 2.5 m
10186A/125	Zinc-plated steel pelmet* for track 9010 – L = 1.25 m
10186A/250	Ditto, L = 2.5 m
10187/250	Special galvanised steel profile to fasten wooden pelmet
9118	Ornamental stopper



*to be painted – available in RAL colours upon request

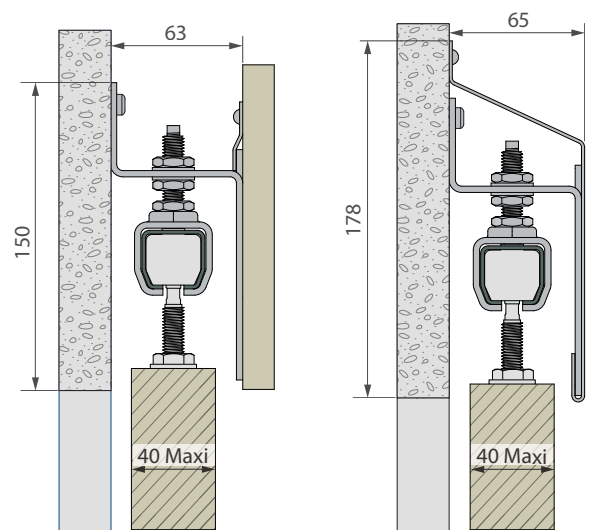
STAINLESS STEEL 304L - 80 KG**ROLLERS & ACCESSORIES - 9010X**

9318NLX	Roller on nylon-coated ball bearing with M10 stainless steel screw
0036XA2	Straight stainless steel plate to be screwed on edge - min. panel 25 mm
0037XA2	Stainless steel plate to be screwed on flat side (95 x 62 mm) - min. panel 30 mm
10213XA2	Claw stop to be screwed into the track

TRACKS & ACCESSORIES - 9010X

9010XA2/.	Stainless steel HERCULE track. L = 2 / 3 / 4 and 6 m.
9011XA2	Stainless steel box bracket
10185XA2	Stainless steel fixture for mounting box bracket
10186/250XA2	Stainless steel pelmet* for track 9010 – L = 2.5 m
10187/250XA2	Specific stainless steel profile to fasten wooden pelmet
9118XA2	Stainless steel A2 304L ornamental stopper
9118XA4	Ditto in stainless steel A4 316L

*available in RAL colours upon request

**SYNCHRONISATION****ACCESSORIES FOR SYNCHRONISATION OF 2 LEAVES**

10189	Aluminium return pulley with plastic cover
10191	Stainless steel joining bracket
10172/...	Cog belt (reinforced). L = 2.5 / 5 / 7.5 / 10 / 15 / 25 and 50 m

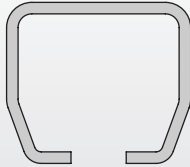


For use in coastal environments (less than 3 km), use A4 stainless steel (316L):

Contact us

System for sliding shutters

WIN-STH



9030

CAPACITY PER PANEL	120 (STEEL) - 200 Kg (SST)
PANEL THICKNESS	40-80 MM
PANEL TYPES	wood, aluminium, PVC...
TRACK	STEEL / A2 SST (304L)
MOVEMENT	STRAIGHT

120 KG & 200 KG



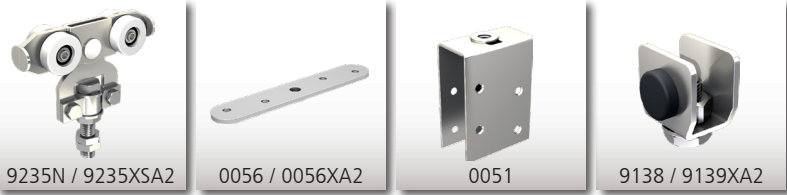
MADE IN FRANCE
SINCE 1920

SLIDING

STEEL - 120 KG

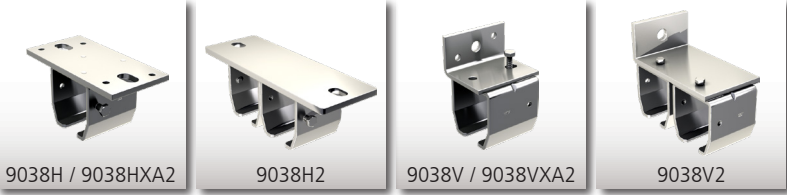
ROLLERS & ACCESSORIES - 9030

Item no.	Description
9235N	Roller on nylon-coated ball bearing - M12 screw - 120 kg per leaf
0056	Straight plate to be screwed on edge – min. leaf 30 mm
0051	Adjustable clevis for panels 40 to 50 mm thick
9138	Ornamental stopper



TRACKS & ACCESSORIES - 9030

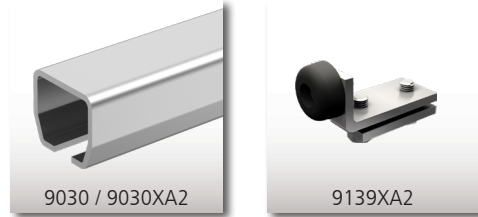
9030/...	Galvanised steel HERCULE track. L = 2 / 3 / 4 / 5 and 6 m
9038H	Single box bracket for ceiling mounting
9038H2	Double box bracket for ceiling mounting
9038V	Single box bracket for wall mounting
9038V2	Double box bracket for wall mounting



STAINLESS STEEL 304L - 200 KG


ROLLERS & ACCESSORIES - 9030X

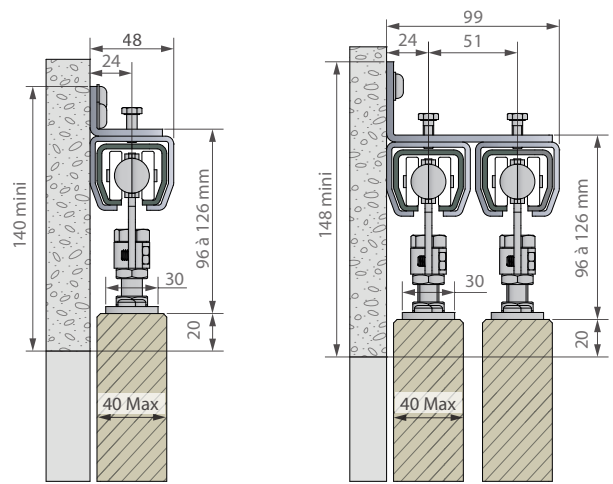
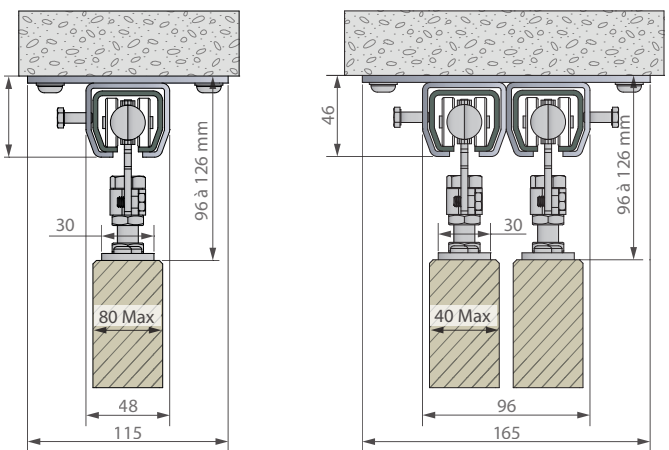
9235XA2	Roller on nylon-coated ball bearing - Stainless steel M12 screw 200 kg per panel
0056XA2	Straight stainless steel plate to be screwed on edge – min. leaf 30 mm
9139XA2	Stainless steel ornamental stopper



TRACKS & ACCESSORIES - 9030X

9030XA2/.	Stainless steel HERCULE track - L = 6 m.
9038HXA2	Single stainless steel box bracket for ceiling mounting
9038VXA2	Single stainless steel box bracket for wall mounting

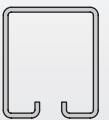
 For use in coastal environments (less than 3 km), use A4 stainless steel (316L):
Contact us



80 KG

System for sliding shutters

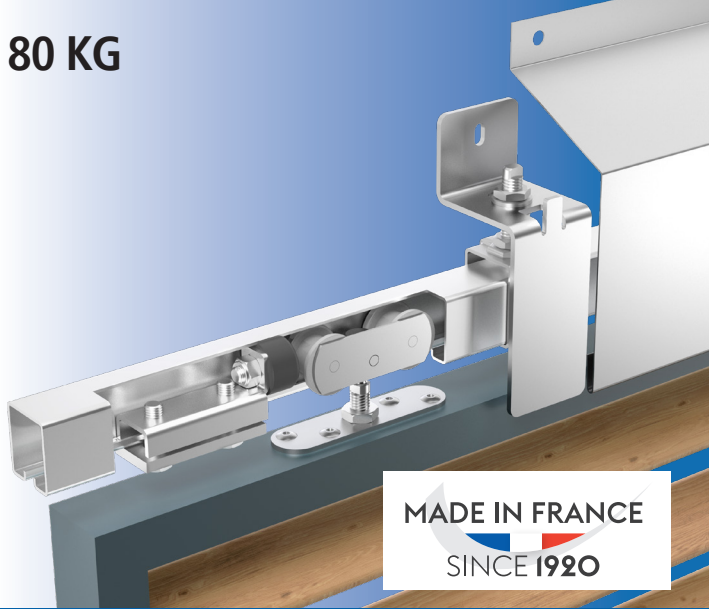
WIN-STS



3530

CAPACITY PER LEAF	3530: 80 kg
LEAF THICKNESS	20-40 mm
LEAF TYPES	wood, aluminium, PVC...
TRACK	STEEL
MOVEMENT	STRAIGHT

MANTION®



MADE IN FRANCE
SINCE 1920

3530 - 80 KG

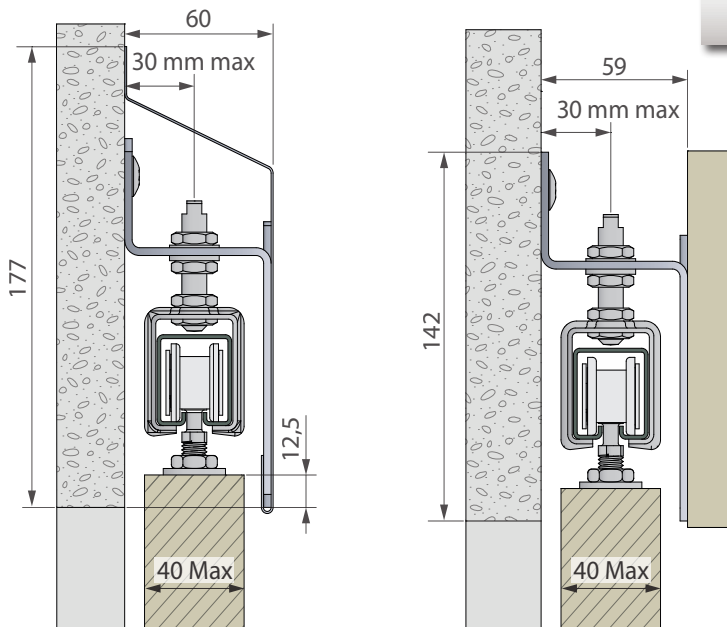
ROLLERS & ACCESSORIES

Item no.	Description
0633D	Roller mounting on roller cage with nylon rollers and M10 screw
0036	Straight plate to be screwed on edge – min. leaf 20 mm
0037	Plate to be screwed on flat side (95 x 62 mm) – min. leaf 30 mm
0031	Adjustable clevis for leaves up to 25 to 35 mm thick
1098-1	Track stop

TRACKS & ACCESSORIES

3530/...	Galvanised steel SPORTUB track. L = 2 / 3 / 4 / 5 and 6 m.
3531	Box bracket
10185	Fixture for mounting box bracket
10186/250	Galvanised steel pelmet for track 3530 – L = 2.5 m
10186A/125	Zinc-plated steel pelmet* for track 3530 – Length = 1.25 m
10186A/250	Ditto, L = 2.5 m
10187/250	Special galvanised steel profile to fasten wooden pelmet
3540	Ornamental cap for end track

*to be painted – available in RAL colours upon request



For use in coastal environments (less than 3 km) **Contact us**

System for sliding shutters

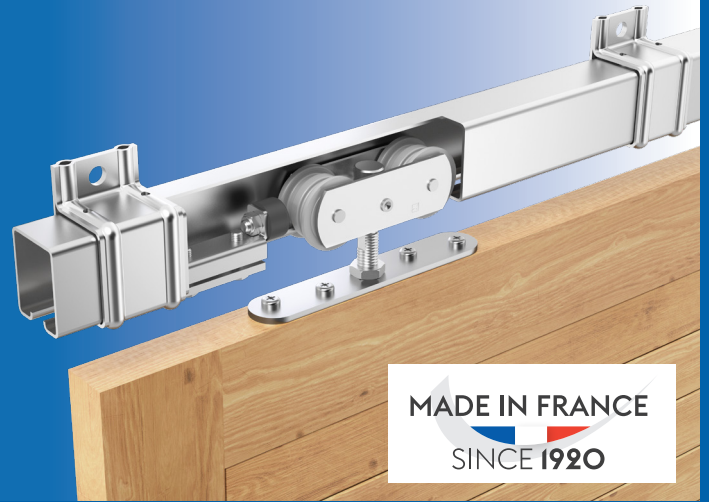
WIN-STS



5040

CAPACITY PER LEAF	5040: 150 kg
LEAF THICKNESS	20-80 mm
LEAF TYPES	wood, aluminium, PVC...
TRACK	STEEL
MOVEMENT	STRAIGHT

150 KG



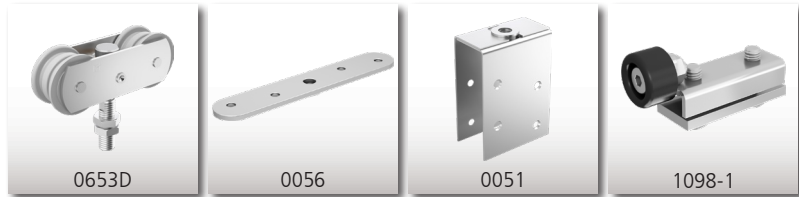
MADE IN FRANCE
SINCE 1920

SLIDING

5040 - 150 KG

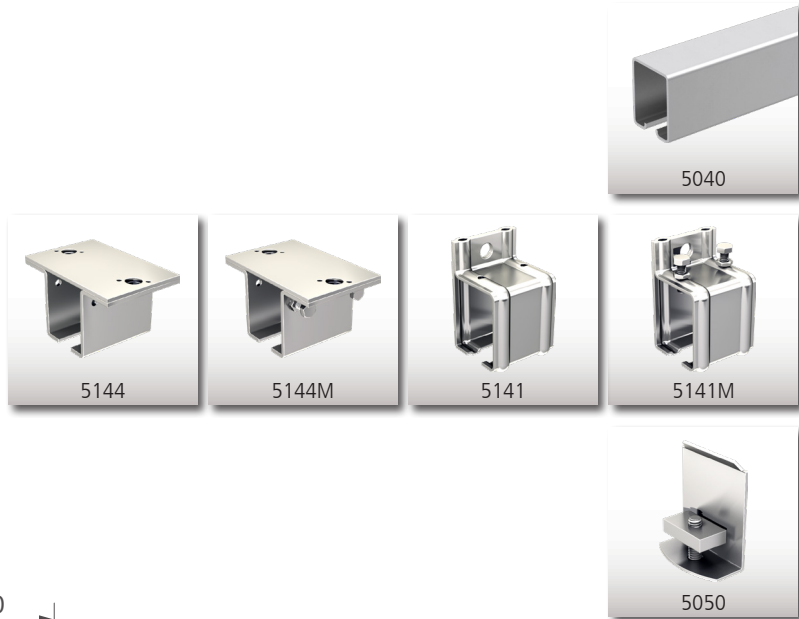
ROLLERS & ACCESSORIES

Item no.	Description
0653D	Roller on roller cage with nylon rollers and M12 screw
0056	Straight plate to be screwed on edge – min. leaf 30 mm
0051	Adjustable clevis for leaves up 40 to 50 mm thick
1098-1	Track stop

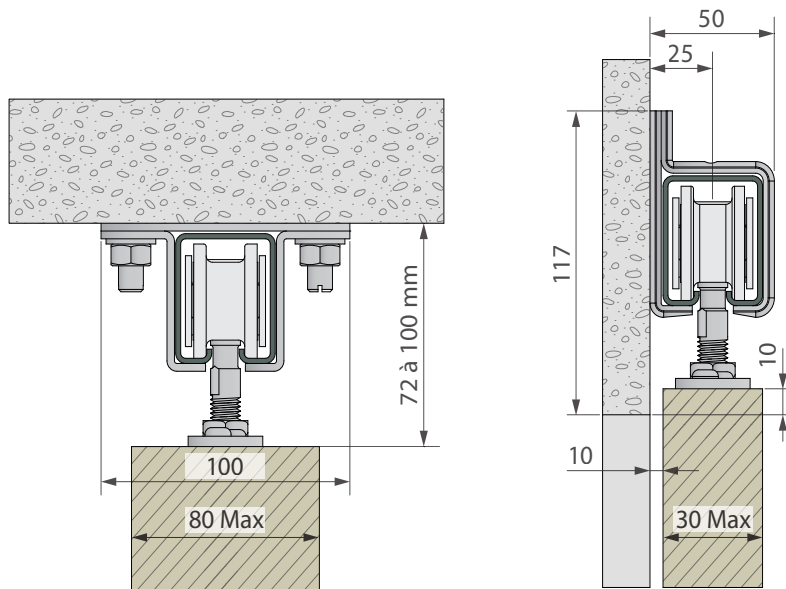


TRACKS & ACCESSORIES

5040/...	Galvanised steel SPORTUB track. L = 2 / 3 / 4 / 5 and 6 m.
5144	Box bracket for ceiling mounting
5144M	Joining box bracket for ceiling mounting
5141	Box bracket for wall mounting
5141M	Joining box bracket for wall mounting
5050	Ornamental cap for end track



For use in coastal environments (less than 3 km) **Contact us**





Guide for sliding shutters FACE MOUNTING

Guide profiles

U-profiles



U-PROFILES

Item no.	Description
1109/...	25x17 zinc-plated steel U-profile. L = 2 / 3 / 4 / 5 and 6 m.
1109A/...	25x18 raw aluminium U-profile. L = 2 / 2.5 / 3 / 5 and 6 m.
1110/...	30x30 zinc-plated steel U-profile. L = 3 / 4 / 5 and 6 m.
1110XA2/.	30x30 A2 stainless steel U-profile. L = 3 and 6 m.
1110XA4/.	30x30 A4 stainless steel U-profile. L = 3 and 6 m (coastal).

ISOLATED GUIDING – SINGLE CHANNEL

		1109	1110
1128	Simple adjustable guide with 2 flexible-coated guide rollers, on stainless steel bracket	X	X
1128A	Simple adjustable guide with 2 nylon guide rollers, electrocoated steel bracket + white polyester paint RAL 9010	X	X
1128ARG	Simple adjustable plastic guide on electrocoated steel bracket + white polyester paint RAL 9010. For U-profiles up to 14 to 30 mm.	X	X
1128GU	Simple adjustable guide with plastic slider, on stainless steel bracket.		X
1054	Simple guide with nylon guide roller, on raw aluminium bracket.	X	

ISOLATED GUIDING – DOUBLE CHANNEL

		1109	1110
1128D	Double adjustable guide with 4 flexible-coated guide rollers, on stainless steel bracket	X	X
1128DRG	Double adjustable plastic guide on stainless steel bracket. For U-profiles up to 14 to 30 mm.	X	X

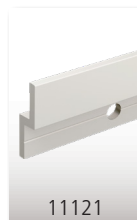
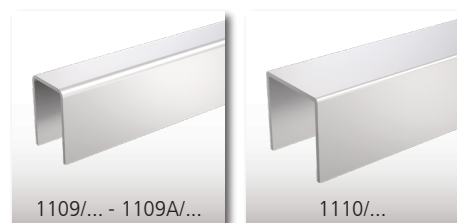
FOLLOWER TRACKS

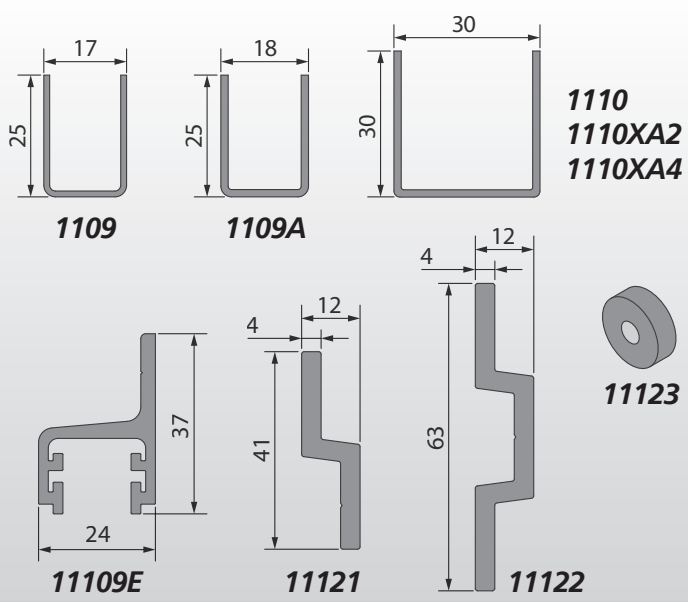
11121/*	41x12 anodised aluminium guide profile (4 mm thick) L = 2.5 / 3 / 4 / 5 and 6 m (single channel). Drilled every 500 mm (Ø 8.5 mm)
11122/*	63x12 anodised aluminium guide profile (4 mm thick) L = 2.5 / 3 / 4 / 5 and 6 m (double channel). Drilled every 500 mm (Ø 8.5 mm)
11123	Set of 5 nylon spacers, 8 mm thick, to fasten 11121 and 11122.
11109E/...*	37x24 anodised aluminium U-profile (14 on inside) to be screwed onto wall. L = 3 and 6 m.

*profiles are available in raw aluminium (to paint) upon request

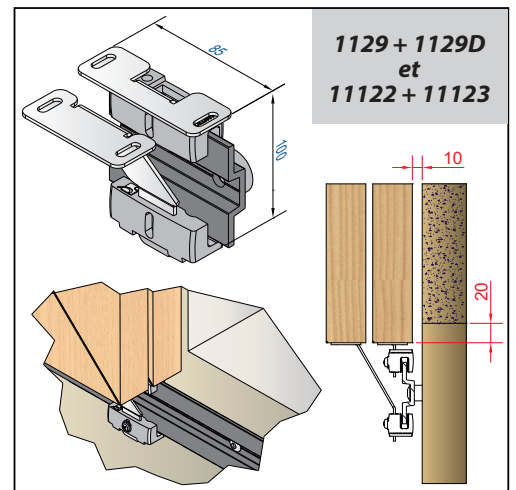
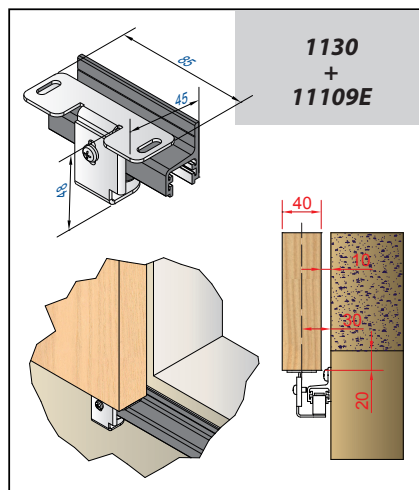
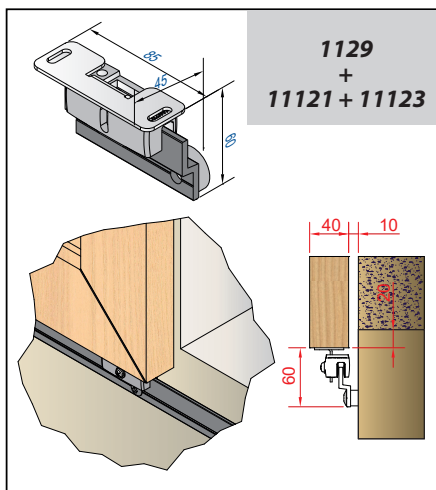
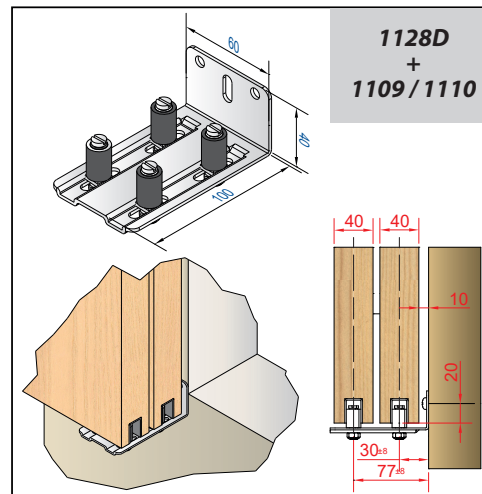
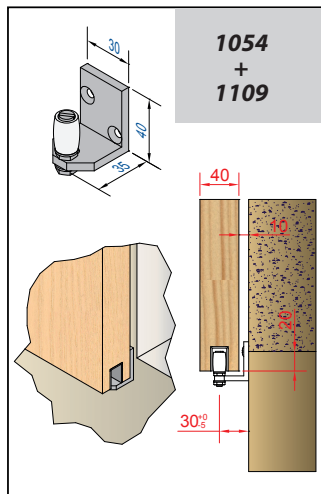
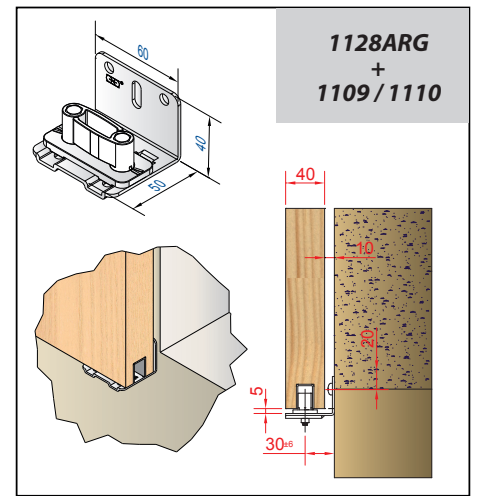
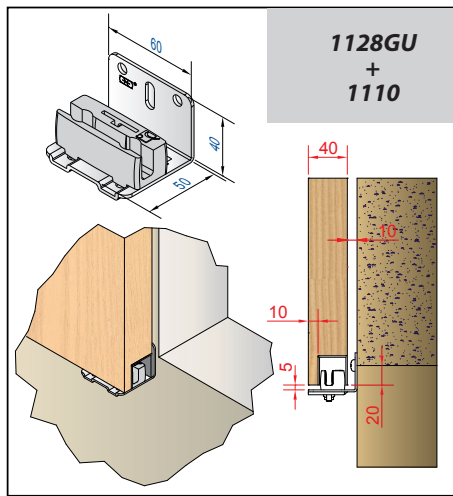
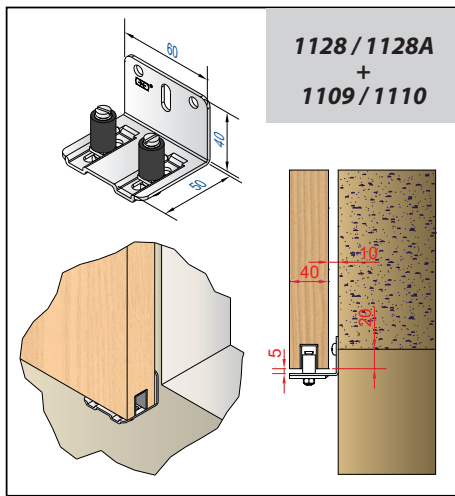
GUIDE ON RUNNING TRACK – SINGLE AND DOUBLE CHANNEL

		11121	11122	11109E
1129	Simple plastic slider on stainless steel bracket for mounting under the leaf	X	X	
1129D	Simple plastic slider on stainless steel bracket for mounting under outside the leaf (double channel configuration)		X	
1130	Simple adjustable guide with 1 flexible-coated guide roller, on stainless steel bracket for mounting under the leaf			X





SLIDING





Guide for sliding shutters

FLOOR/SILL MOUNTING

U-profiles

Guide profile



1109 1109A

1110

11109

U-PROFILES

Item no.	Description
1109/...	25x17 zinc-plated steel U-profile. L = 2 / 3 / 4 / 5 and 6 m.
1109A/...	25x18 raw aluminium U-profile. L = 2 / 2.5 / 3 / 5 and 6 m.
1110/...	30x30 zinc-plated steel U-profile. L = 3 / 4 / 5 and 6 m.
1110XA2/.	30x30 A2 stainless steel U-profile. L = 3 and 6 m.
1110XA4/.	30x30 A4 stainless steel U-profile. L = 3 and 6 m (coastal).
11109/300*	20x24 anodised aluminium U-profile (14 on inside). L = 3 m.
11109/600*	Ditto for 6 m long tracks

*profiles are available in raw aluminium (to paint) upon request



1109/... - 1109A/...



1110/...



11109



1109DU



1110DU

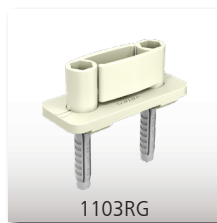


1112/2

ISOLATED GUIDING - GROOVED LEAVES

		1109	1110	11109
1109DU	Guide with 1 nylon guide roller on S8 dowel	X		X
1110DU	Guide with 1 brass guide roller on S10 dowel		X	
1112/2	Adjustable guide with 2 nylon guide rollers on stainless steel plate.	X		X
1103RG	Plastic adjustable slider with screw and S6 dowel. For U-profiles up to 14 to 30 mm.	X	X	X
1103RG3	Ditto, black plastic	X	X	X
1103RG2	Black plastic adjustable slider. Can be used for bracket and/or sill mounting. For U-profiles up to 14 to 30 mm.	X	X	X
11110GDU*	Grey plastic slider with screw and S6 dowel. For U-profiles 30 x 30 mm (1110).		X	
11110GU*	Grey plastic slider to be screwed in. For U-profiles 30 x 30 mm (1110).		X	
1110GDL	White nylon slider to be screwed in – 100 x 25 x 25 mm For U-profiles 30 x 30 mm (1110).		X	
1102XA2	Guide with 1 nylon guide roller on stainless steel plate to be screwed in.	X		X
1099XA2	Guide with 1 brass guide roller on stainless steel plate to be screwed in.		X	

*also suitable for 4 mm flat bar



1103RG



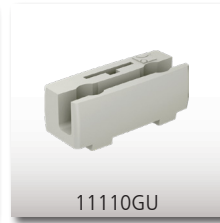
1103RG3



1103RG2



11110GDU



11110GU



1110GDL



1102XA2



1099XA2

SPECIAL ISOLATED GUIDE FOR SLOPING SILLS

		1109	1110	11109
1131XRG	Simple plastic slider on stainless steel tiltable plate. For U-profiles up to 14 to 30 mm.	X	X	X
1131DXRG	Double plastic slider on tiltable stainless steel plate. For U-profiles up to 14 to 30 mm.	X	X	X



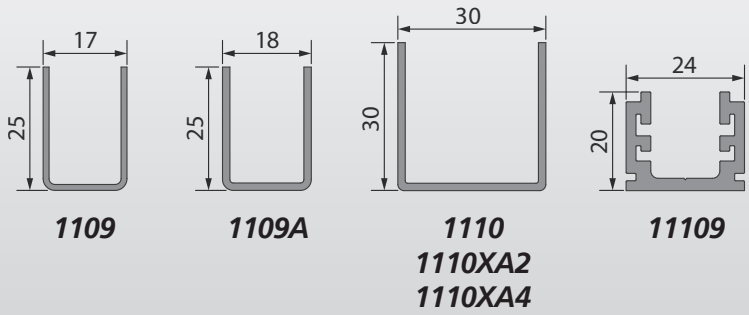
1131XRG



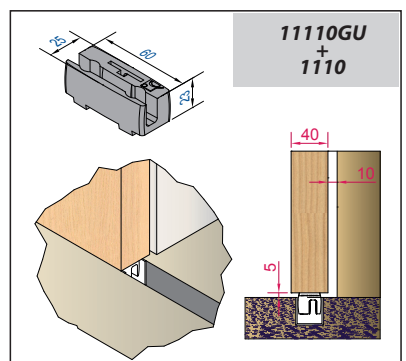
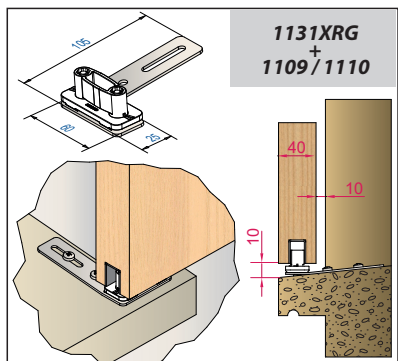
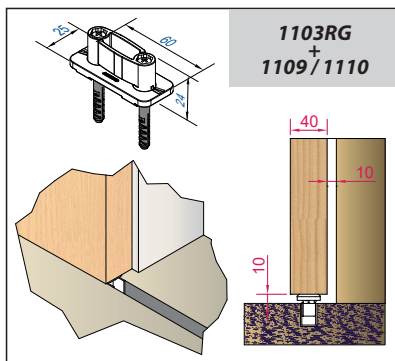
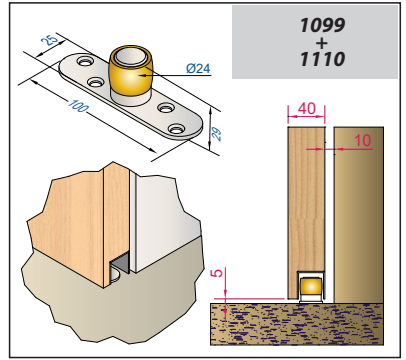
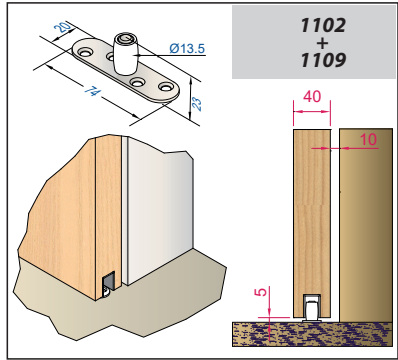
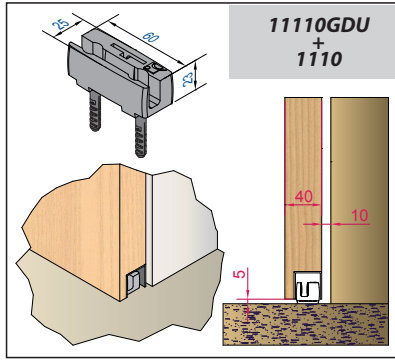
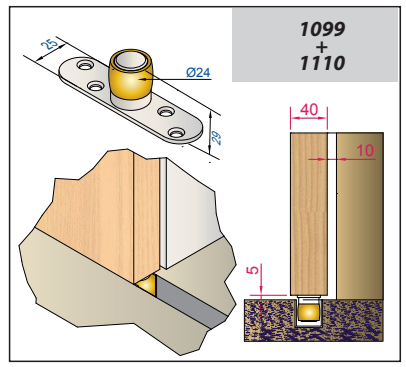
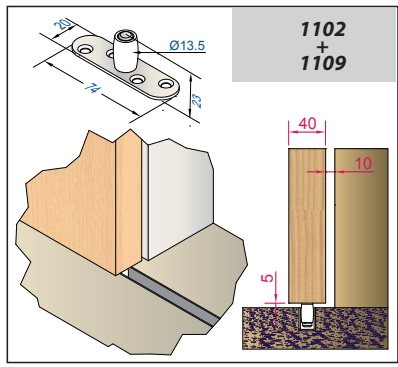
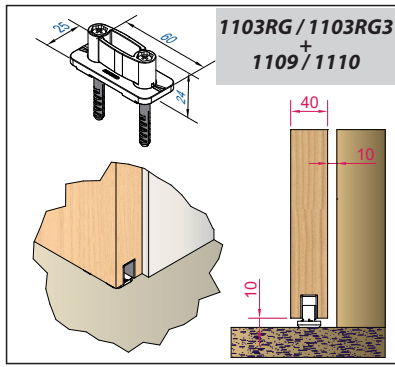
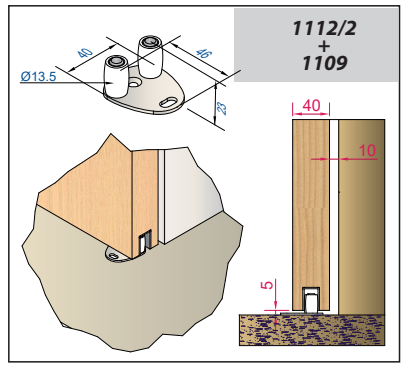
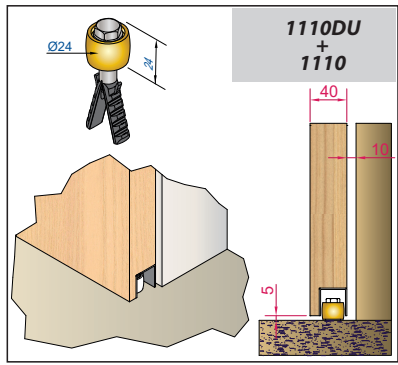
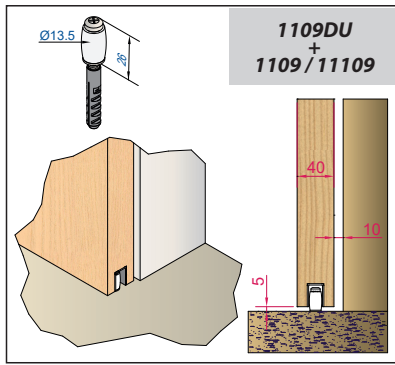
1131DXRG

Guide for sliding shutters

MOUNTING EXAMPLES



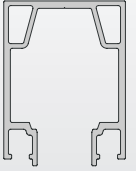
SLIDING





System for folding sliding shutters

WIN-Fold 2



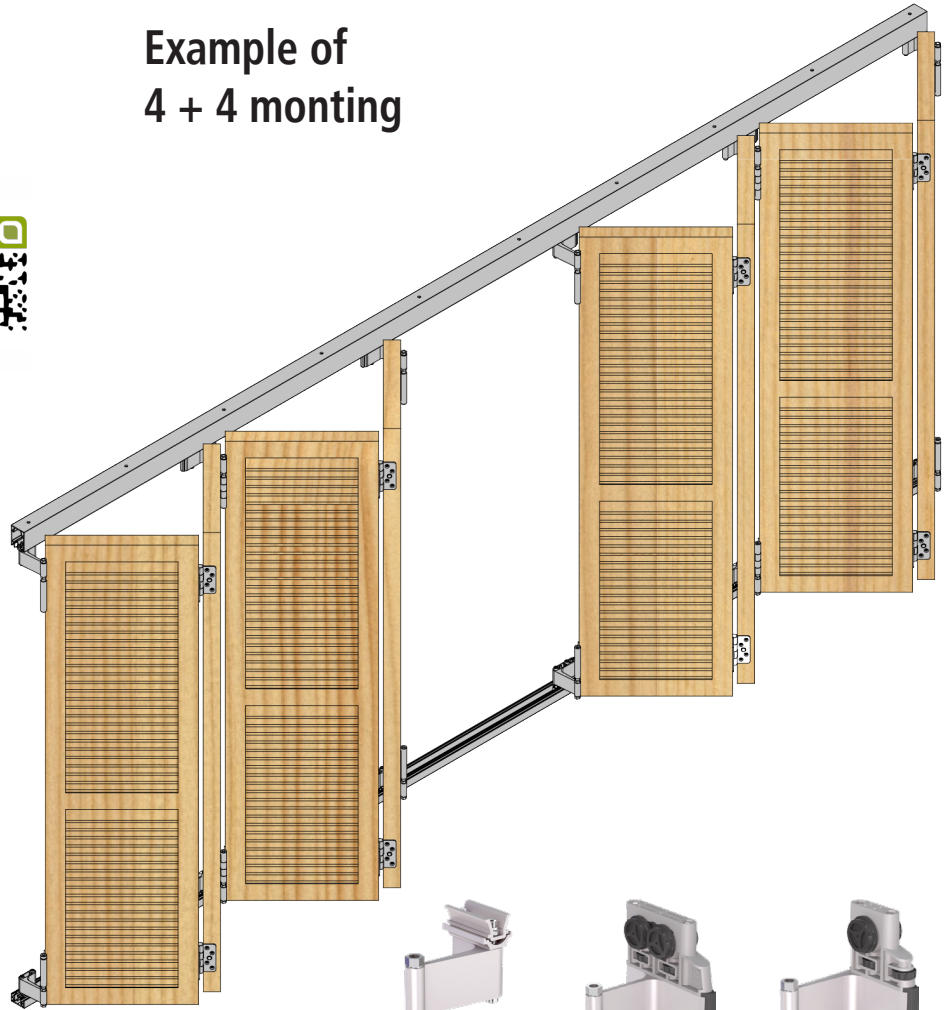
CAPACITY PER LEAF	20 kg
LEAF THICKNESS	30-34 mm
LEAF DIMENSIONS	600 x 3000 mm max. 0.9 m ² max. (solid)
TRACK	ALUMINIUM
MOVEMENT	FOLDING STRAIGHT

SlidSoft

to determine the components needed for your specifications, all configurations must be validated by MANTION



Example of 4 + 4 mounting



For use in coastal environments (less than 3 km) **Contact us**



Upper track

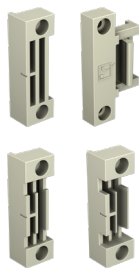
Guide profile reveal fitting

Guide profile face mounting

OPTIONS



Lock



Hold open



Hinge



Fixed point



Intermediate roller



Mobile end roller

WIN-FOLD2: all the experience of the European specialist in one system – reliable, silent, attractive.

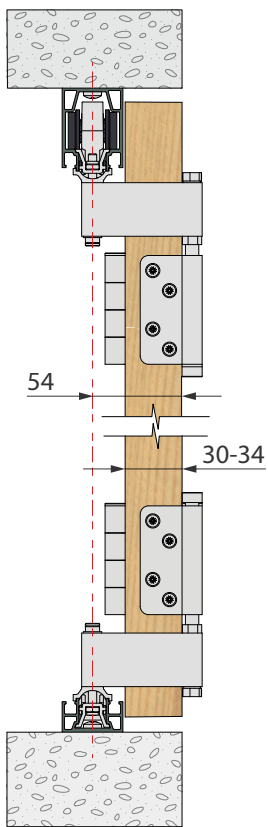
- **NEAT:** the track is concealed behind the leaves so the latter can be mounted flush with the façade.
- **TECHNICAL:** the fasteners are stainless steel and the hanger and guide bodies are anodised aluminium. The frames are made of fibreglass-reinforced technical polymer. The aluminium tracks are available with an anodised finish, painted (RAL) or untreated.
- **INGENIOUS:** The rollers are mounted on ball bearings and equipped with a ball joint for perfectly smooth movement.
- **PRACTICAL:** options such as a system for holding the leaves open and 1 or 2-point lockin

WIN-Fold 2

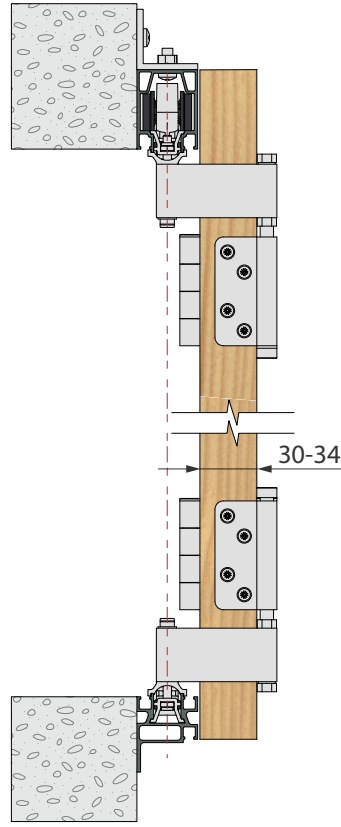


SLIDING FOLDING

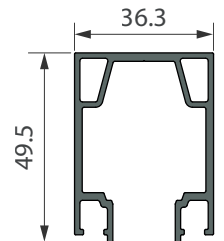
Reveal fitting



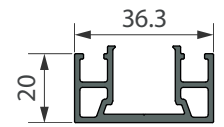
Face mounting



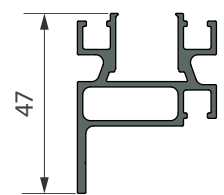
Track & Profiles



11520



11116



11116E

QUOTE ONLINE
SlidSoft

Deriving solution for your project is easy!

Enter the dimensions of your opening and choose additional options.
Access to solution with plans.



Configurator



1

Votre projet

2

Les mesures

3

Le matériel

4

Plan & documentation



Drive system for swing shutters

WIBAT® Invisible drive

CAPACITY PER LEAF	Simple: 50 KG & 1.6 M ² (Min. 30 cm max. 80 cm) Double: 60 KG & 2M ² (Min. 30 cm max. 90 cm)
MOTOR TYPE	MOTORISED HINGE PIN
SUPPLY VOLTAGE	24 VDC
INSTALLATION	New or renovation
MOVEMENT	SWING

WIBAT® DRIVE KIT WITH WIRELESS REMOTE CONTROL

Item no.	Description
Kit for 1 leaf- Single and double drive kits	
W0000070	Single drive kit (right) including: - 1 right-hand motorised hinge pin Ø 14 mm* - 1 control box + 1 wireless remote control C0004770 - 1 drilling template and 1 retaining ring for sealing in wall - Fasteners and installation instructions
W0000040	Ditto containing 1 left-hand motorised hinge pin Ø 14 mm*
W0000720	Double drive kit (right) including: - 2 right-hand motorised hinge pins Ø 14 mm* - 1 control box + 1 wireless remote control C0004770 - 1 drilling template and 2 retaining rings for sealing in wall - Fasteners and installation instructions
W0000270	Ditto containing 2 left-hand motorised hinge pins Ø 14 mm*
Kit for 2 leaves - Single and double drive kits	
W0000010	Single drive kit (left and right) including: - 2 motorised hinge pins Ø 14 mm* (1 left and 1 right) - 1 control box + 1 wireless remote control C0004770 - 1 drilling template and 2 retaining rings for sealing in wall - 4 fastening screws for shutters + installation instructions
W0000240	Double drive kit (left and right) including: - 4 motorised hinge pins Ø 14 mm* (2 left and 2 right) - 1 control box + 1 wireless remote control C0004770 - 1 drilling template and 4 retaining rings for sealing in wall - 8 fastening screws for shutters + installation instructions

*for 12 - 16 or 18 mm hinge pins: contact us

Wired version: can be controlled by a home automation system

	Single drive 1 leaf	Double drive 1 leaf	Single drive 2 leaves	Double drive 2 leaves		
Wireless	W0000070	W0000040	W0000720	W0000270	W0000010	W0000240
Wired	W0000080	W0000050	W0000730	W0000290	W0000020	W0000250



WIBAT® drive kit with wireless remote control



WIBAT® drive kit with wired remote

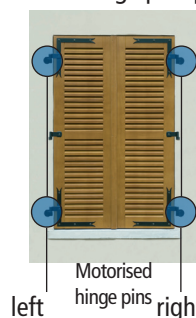


for 12 - 16 or 18 mm hinge pins:
Contact us

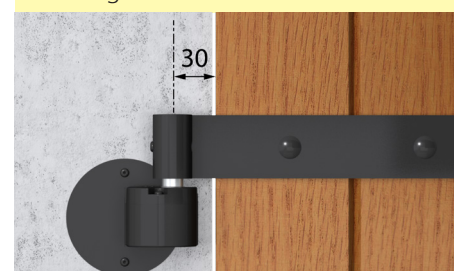
Single drive kit:
1 motorised hinge pin per leaf



Double drive kit:
2 motorised hinge pins per leaf



Distance hinge pin/reveal: 30 mm
min. Use steel or stainless steel strap
hinges at least 5 mm thick



WIBAT® DRIVE KIT WITH WIRED REMOTE CONTROL

Kit for 1 leaf - Single and double drive kits	
W0000080	Single drive kit (right) including: - 1 right-hand motorised hinge pin Ø 14 mm* - 1 control box + 1 wired remote control C0001050 - 1 drilling template and 1 retaining ring for sealing in wall - Fasteners and installation instructions
W0000050	Ditto containing 1 left-hand motorised hinge pin Ø 14 mm*
W0000730	Double drive kit (right) including: - 2 right-hand motorised hinge pins Ø 14 mm* - 1 control box + 1 wired remote control C0001050 - 1 drilling template and 2 retaining rings for sealing in wall - Fasteners and installation instructions
W0000290	Ditto containing 2 left-hand motorised hinge pins Ø 14 mm*
Kit for 2 leaves - Single and double drive kits	
W0000020	Single drive kit (left and right) including: - 2 motorised hinge pins Ø 14 mm* (1 left and 1 right) - 1 control box + 1 wired remote control C0001050 - 1 drilling template and 2 retaining rings for sealing in wall - 4 fastening screws for shutters + installation instructions
W0000250	Double drive kit (left and right) including: - 4 motorised hinge pins Ø 14 mm* (2 left and 2 right) - 1 control box + 1 wired remote control C0001050 - 1 drilling template and 4 retaining rings for sealing in wall - 8 fastening screws for shutters + installation instructions

*for 12 - 16 or 18 mm hinge pins: contact us

WIBAT®, the motorised hinge pin for automatic opening and closing of swing shutters

Wibat® is all about invisibility. Easy to install, the motorised hinge pin is entirely concealed in your wall.

- Open your shutters without opening your windows (significantly reduces heat loss)
- Thanks to WIBAT® you can now use those shutters you couldn't reach (behind a worktop, bath tub, etc.), ideal for disabled users.
- More comfortable to use, long-lasting, smooth opening to the angle you choose.
- 100% French, WIBAT® is individually tested and comes with a 5-year warranty at no extra cost.
- WIBAT is equipped with obstacle detection for personal safety.
- Suitable for all shapes of shutter.



MADE IN FRANCE
SINCE 1920



Installation guide

WIBAT®

SWINGING

POWER SUPPLY UNITS (mandatory for proper operation)

C0000265	220V/24V DC 100W power supply for up to 2 motors. Dimensions: 70 x 63 x 88 mm (L x D x H)
W0000230	220V/24V DC 100W power supply for up to 2 motors. In a box for flush mounting Ø 68 mm - depth 60 mm
C0000275	220V/24V DC 240W power supply for up to 16 motors. Dimensions: 63.5 x 135 x 140 mm (L x D x H)



ACCESSORIES

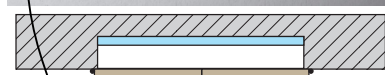
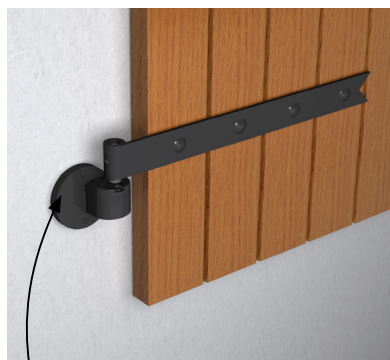
W0000400	Stainless steel multi-leaf link for motorising linked leaves to help open and close multi-leaf swing shutters. Min. and max. width of leaves: min. = 400 mm, max. = 650 mm
C0000545	Black anodised aluminium finishing ring, 10 mm thick – to be fixed on the motor box if used for face mounted shutters.
C0000470	Sealing kit for 1 motor including: 1 cartridge (300 ml), 1 screen (Ø 65 mm) and 1 nozzle
C0000485	Sealing kit for 2 motors including: 2 cartridges (300 ml), 2 screens (Ø 65 mm) and 2 nozzles
C0000525	2 screens (Ø 65 mm) + 2 nozzles
W0000990	Drive housing (steel + electrocoating): ideal for outer insulation 125 (L) x 150 (H) x 200 (D) mm
W0000450	Drilling template for Ø 14 to 18 mm hinge pins. Essential for drilling strap hinges, whether made from iron or aluminium.
W0000460	Ditto for Ø 12 mm hinge pins.



see other accessories p.56-57

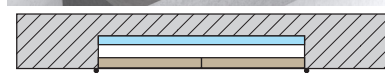
2 TYPES OF INSTALLATION POSSIBLE

FACE MOUNTING



For this type of installation, use ring **C0000545** 10 mm offset from façade

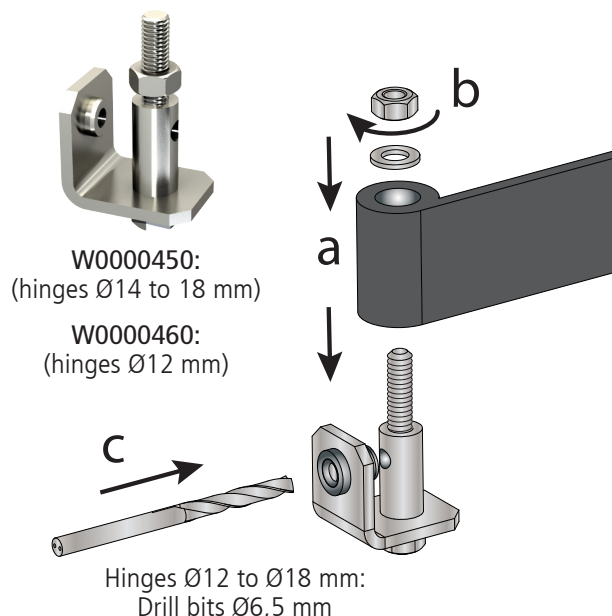
REVEAL FITTING



Use steel or stainless steel strap hinges at least 5 mm thick

EASY AND PRACTICAL

Easy drilling of strap hinges





Drive system for swing shutters

WIBAT® APPLIQUE arm drive

CAPACITY PER LEAF	50 KG & 1.6 M ² MAX. Min. 40 cm Max. 80 cm
MOTOR TYPE	MOTORISED HINGE PIN
SUPPLY VOLTAGE	230V
INSTALLATION	New or renovation
MOVEMENT	SWING

WIBAT® APPLIQUE DRIVE KIT - WIRELESS REMOTE CONTROL

Item no.	Description
Kit for 1 leaf - Max. area/leaf: 1.6 m² - Max. weight/leaf: 50 kg	
W0001030	Drive kit (right) including: - 1 right-hand motor unit - 1 arm + slide channels, white RAL 9010* - 1 wireless remote control C0004770 - Fasteners, installation template and instructions
W0001020	Ditto containing 1 left-hand motor
Kit for 2 leaves - Max. area/leaf: 1.6 m² - Max. weight/leaf: 50 kg	
W0001000	Drive kit (left and right) including: - 2 motor units (1 right and 1 left) - 2 arms + slide channels, white RAL 9010* - 1 wireless remote control C0004770 - Fasteners, installation template and instructions

*available in other colours upon request

WIBAT® APPLIQUE DRIVE KIT - WIRED REMOTE CONTROL

Kit for 1 leaf - Max. area/leaf: 1.6 m² - Max. weight/leaf: 50 kg	
W0001060	Drive kit (right) including: - 1 right-hand motor unit - 1 arm + slide channels, white RAL 9010* - 1 wired switch (2 push buttons) C0001050 - Fasteners, installation template and instructions
W0001050	Ditto containing 1 left-hand motor unit
Kit for 2 leaves - Max. area/leaf: 1.6 m² - Max. weight/leaf: 50 kg	
W0001040	Drive kit (left and right) including: - 2 motor units (1 right and 1 left) - 2 arms + slide channels, white RAL 9010* - 1 wired switch (2 push buttons) C0001050 - Fasteners, installation template and instructions

*available in other colours upon request

 Wired version: can be controlled by a home automation system

CLOSURE ACCESSORIES

W0000760	Electromagnetic closure (24 V DC – cable length = 3 m): - keeps shutter closed in case of strong winds (holding force: 12 daN) - Effective deterrent against intrusions To equip 1 pair of shutters (can be positioned at the top or bottom)
W0000770	Ditto for 1 pair of shutters with 2 electromagnetic closures (top and bottom)
W0000400	Stainless steel multi-leaf link for motorising linked leaves to help open and close multi-leaf swing shutters. Min. and max. width of leaves: min. = 400 mm, max. = 650 mm
W0000470*	Electromagnetic closure (24 V DC – cable length: 3 m) cable exits on side, bolt on left side for swing shutter Holding force: 80 daN
W0000471*	Ditto with bolt on right side
W0000472*	Ditto W0000470 with vertical cable exit
W0000473*	Ditto W0000471 with vertical cable exit

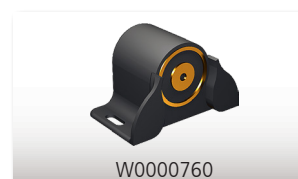
*see explanations for the choice of closure on page 57

	Drive 1 leaf	Drive 2 leaves
Wireless	W0001030	W0001000
Wired	W0001060	W0001040



RAL 9010

Available in other colours upon request



see other accessories p.56-57

WIBAT® APPLIQUE, la motorisation des volets battants cintrés ou arrondis

Très simple à installer, en neuf ou en rénovation, Wibat® Applique s'adapte à tous types de volets battants et vous permet de conserver vos volets existants.

- Rapidité et simplicité de pose. Existe en version radio et filaire.
- Motorisation centralisable en version radio et filaire (pour la version filaire, une centrale domotique est nécessaire)
- WIBAT® APPLIQUE permet d'arrêter les volets en position intermédiaire.
- WIBAT® APPLIQUE ouvre vos volets sans avoir à ouvrir vos fenêtres et diminue significativement les déperditions de chaleur !
- Atteignez enfin les volets inaccessibles (plan de travail, baignoire...).
- WIBAT® APPLIQUE est équipé d'une détection d'obstacle assurant ainsi la sécurité des personnes : en cas d'obstacle, le volet revient automatiquement en position initiale.



MADE IN FRANCE
SINCE 1920



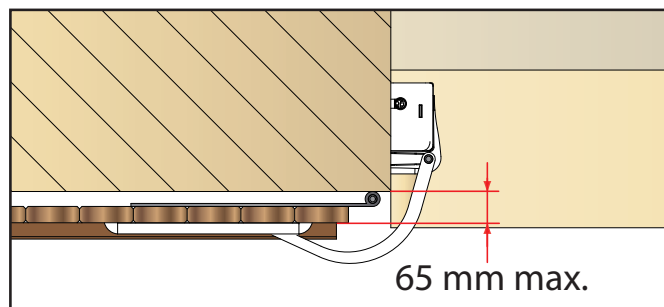
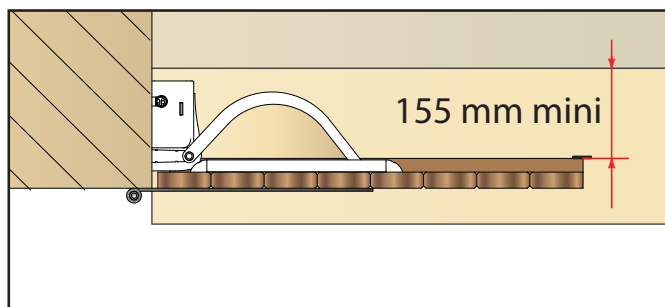
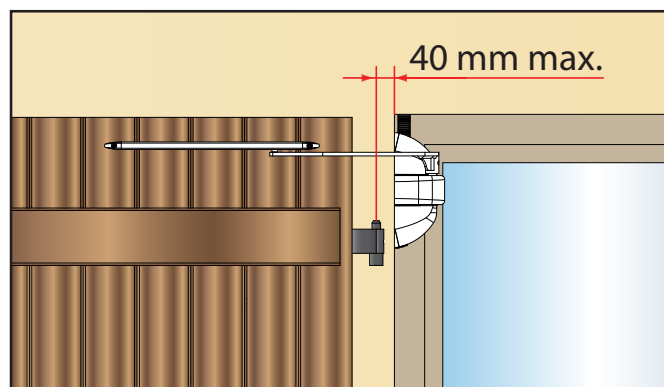
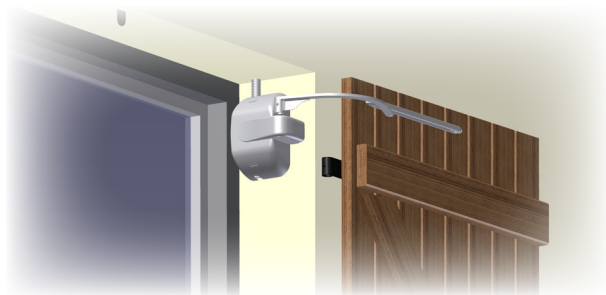
Installation guide



WIBAT® APPLIQUE

SWINGING

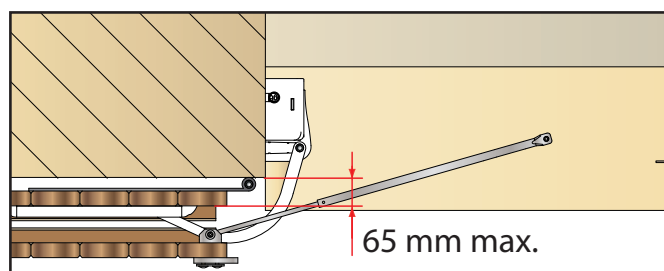
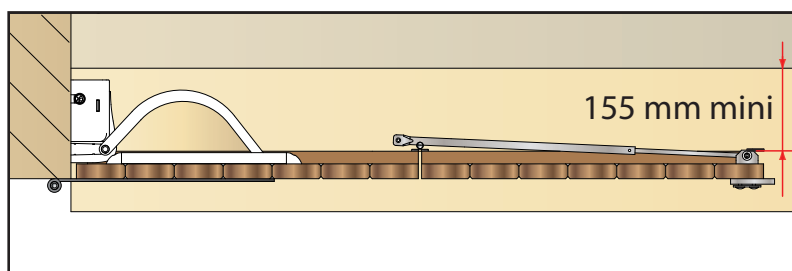
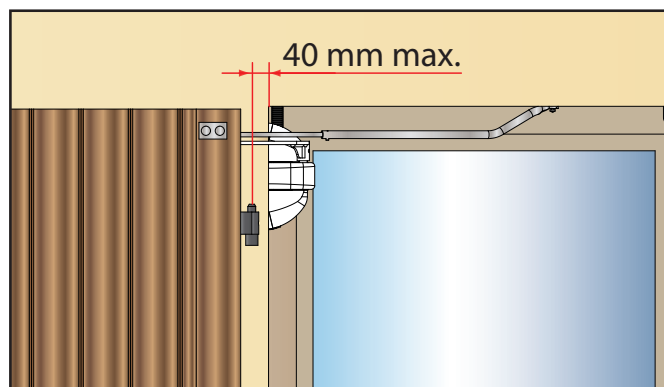
Installation configuration with 2 leaves



Installation configuration with 2 linked leaves



use of multi-leaf link essential





Drive system for swing shutters

WIBAT® LINTEAU arm drive

CAPACITY PER LEAF	50 KG & 1.6 M ² MAX. Min. 40 cm Max. 80 cm
MOTOR TYPE	MOTORISED ARM
SUPPLY VOLTAGE	230VAC
INSTALLATION	Neuf ou rénovation
MOVEMENT	SWING

SINGLE DRIVE KIT FOR 400 TO 800 MM OPENINGS

Item no.	Description
W0001310	1 motor kit with wireless control for openings with 1 shutter including: - 1 motor unit (supplied with 1 right-hand arm and 1 left-hand arm - white*) - 1 white casing set* - 1 wireless remote control C0004770 - 1 installation template + fastening screws and instructions
W0001360	Ditto, version with 1 wired switch C0001050

DOUBLE DRIVE KIT FOR 800 TO 1300 MM OPENINGS

W0001300	2-motor kit with wireless control for openings with 2 shutters including: - 2 motor units (supplied with 1 right-hand arm and 1 left-hand arm - white*) - 1 white casing set* - 1 wireless remote control C0004770 - 1 installation template + fastening screws and instructions
W0001350	Ditto, version with 1 wired switch C0001050

DOUBLE DRIVE KIT FOR 1300 TO 1840 MM OPENINGS

W0001330	2-motor kit with wireless control for openings with 2 shutters including: - 2 motor units (supplied with 1 right-hand arm and 1 left-hand arm - white*) - 1 casing set* - 1 wireless remote control C0004770 - 1 installation template + fastening screws and instructions
W0001380	Ditto, version with 1 wired switch C0001050

DOUBLE DRIVE KIT FOR 1850 TO 2400 MM OPENINGS



W0001340	2-motor kit with wireless control for openings with 2 shutters including: - 2 motor units (supplied with 1 right-hand arm and 1 left-hand arm - white*) - 1 casing set* - 1 wireless remote control C0004770 - 1 installation template + fastening screws and instructions
W0001390	Ditto, version with 1 wired switch C0001050

 **Wired version:** can be controlled by a home automation system

CLOSURE ACCESSORIES

W0000760	Electromagnetic closure (24 V DC – cable length: 3 m): - keeps shutter closed in case of strong winds (holding force: 12 daN) - Effective deterrent against intrusions To equip 1 pair of shutters (can be positioned at the top or bottom)
W0000770	Ditto for 1 pair of shutters with 2 electromagnetic closures (top and bottom)
W0000400	Stainless steel multi-leaf link for motorising linked leaves to help open and close multi-leaf swing shutters. Min. and max. width of leaves: min. = 400 mm, max. = 650 mm
W0000470**	Electromagnetic closure (24V DC – cable length: 3 m) cable exits on side, bolt on left side for swing shutter Holding force: 80 daN
W0000471**	Ditto with bolt on right side
W0000472**	Ditto W0000470 with vertical cable exit
W0000473**	Ditto W0000471 with vertical cable exit

**see explanations for the choice of closure on page p.57

	Drive 1 leaf	Drive 2 leaves
	 ou 	
Wireless	Openings from 400 to 800 mm: W0001310	Openings from 800 to 1300 mm: W0001300 Openings from 1300 to 1840 mm: W0001330 Openings from 1850 to 2400 mm: W0001340
Wired	Openings from 400 to 800 mm: W0001360	Openings from 800 to 1300 mm: W0001350 Openings from 1300 to 1840 mm: W0001380 Openings from 1850 to 2400 mm: W0001390

RAL 9010

Available in other colours upon request



*Also available as standard:
- White casing (RAL 9010) – Black arm (9005)
- Brown casing (RAL 8019) – Black arm (9005)
- Raw (to paint)

If your shutter/window configuration is not covered by the dimensions to be checked:
Contact us! Other arms are available!



see other accessories p.56-57

WIBAT® LINTEAU, the automatic system that allows you to motorise swing shutters simply and easily

Available in several models in different widths, Wibat® Linteau fits all windows and openings perfectly

- Easy to install: no parts requiring cutting to size. The product fits into the opening. Quick and easy to install. French product, 5-year warranty
- With WIBAT® LINTEAU, you can stop the shutters in half-open position.
- Suitable for new or renovation projects, WIBAT® LINTEAU allows you to keep your existing shutters and can be fitted to all types of swing shutters. Presence simulation when combined with a timer (option).
- Available with wireless and wired remote control.
- WIBAT® LINTEAU opens your shutters without the need to open your windows, significantly reducing heat loss!
- Now you can use those shutters you couldn't reach (e.g. worktop, bathtub).
- Equipped with obstacle detection to ensure personal safety: when there is an obstacle, the shutter returns to its initial POSITION



MADE IN FRANCE
SINCE 1920

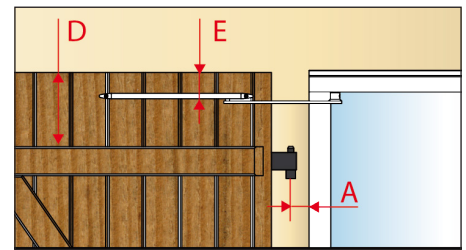
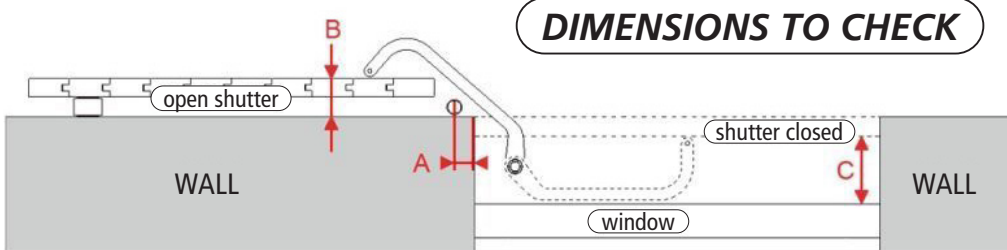


Installation guide

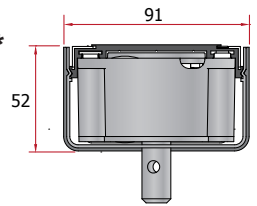


SWINGING

DIMENSIONS TO CHECK



- Dimension **A**: Distance from frame to hinge pin axis = **40 mm max***
- Dimension **B**: Distance from wall to outside of shutter (excluding brace) = **65 mm max***
- Dimension **C**: Distance between window and closed shutter = **150 mm min***
- Dimension **D**: Distance between top of shutter and upper cross-piece = **90 mm min***
- Dimension **E**: Arm fastening area on shutter to top of shutter = **70 mm min***



* Dimensions so that the standard kit will fit. For any other configuration (100 mm lintel, deeper arm, etc.) please contact us (other arms are available)

CASING:

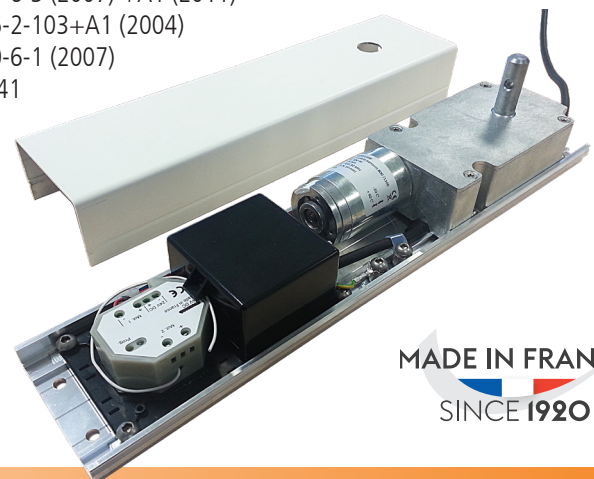
- Quick and easy installation (no cutting!)
- Neat finish



MOTOR TECHNICAL DATA	
Maximum output	100 W
Supply voltage	195/230 V AC - 50/60 Hz
Motor voltage	24V DC
Motor torque	25 Nm
Degree of protection	IP24
Type of limit switch	Dynamic (stops on obstacle detection)
Opening/closing time	16 seconds
S3 – intermittent periodic duty cycle	30 seconds use every 10 min
Motor speed	2 rpm
Operating temperature	-20 / +60C°
Radio frequency	433,92 MHz
Standby power	< 2 W
Colours	White RAL 9010, Brown RAL 8019 or Raw

Complies with the following standards:

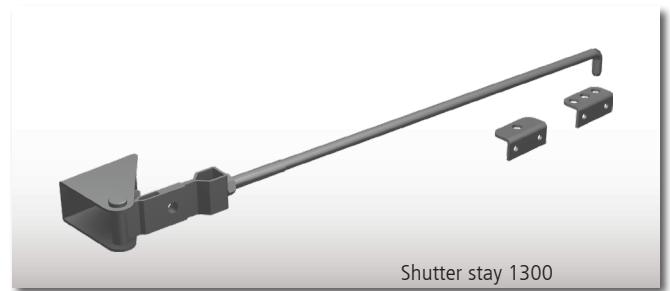
- EN 60335-1+A1+A2+A11+A12+A13+A14 (2003)
- EN 61000-6-3 (2007) +A1 (2011)
- EN 60335-2-103+A1 (2004)
- EN 61000-6-1 (2007)
- NF P26-341



MADE IN FRANCE
SINCE 1920

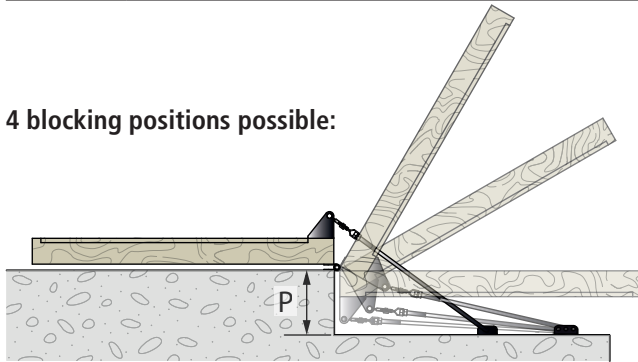
SHUTTER STAYS

Item no.	Description
1300	Shutter stay with hook for swing shutters. Black electrocoated finish. Set includes: - 1 clevis with hook. L = 463 mm max. - 2 adjustable eye latches - Installation instructions 4 blocking positions possible: closed, sunshade, half-open, open Maximum reveal depth: 300 mm
1300L	Shutter stay with hook for swing shutters. Black electrocoated finish. Set includes: - 1 clevis with hook. L = 578 mm max. - 2 adjustable eye latches - installation instructions 4 blocking positions possible: closed, sunshade, half-open, open Maximum reveal depth: 400 mm



Note: This item must not be used for leaves larger than 700 x 1400 mm

4 blocking positions possible:



P = Depth of reveal



MISCELLANEOUS ACCESSORIES

FITTING ACCESSORIES - WIBAT (motorised hinge pins)

C0000545	Black anodised aluminium finishing ring, 10 mm thick – to be fixed on the motor box if used for face mounted shutters.
C0000470	Sealing kit for 1 motor including: 1 cartridge (300 ml), 1 screen (Ø 65 mm) and 2 nozzles
C0000485	Sealing kit for 2 motors including: 2 cartridges (300 ml), 2 screens (Ø 65 mm) and 4 nozzles
C0000525	2 screens (Ø 65 mm) + 2 nozzles
W0000990	Drive housing (steel + electrocoating): ideal for outer insulation 125 (L) x 150 (H) x 200 (D) mm
W0000450	Drilling template for Ø 14 to 18 mm hinge pins. Essential for drilling strap hinges, whether made from iron or aluminium.
W0000460	Ditto for Ø 12 mm hinge pins. Use a drill bit Ø6,5 mm.



POWER SUPPLY UNITS - WIBAT (invisible drive)

C0000265	220V/24V DC 100W power supply for up to 2 motors. Dimensions: 70 x 63 x 88 mm (L x D x H)
W0000230	220V/24V DC 100W power supply for up to 2 motors. In a box for flush mounting Ø 68 mm - depth 60 mm
C0000275	220V/24V DC 240W power supply for up to 16 motors. Dimensions: 63.5 x 135 x 140 mm (L x D x H)



CLOSURE ACCESSORIES

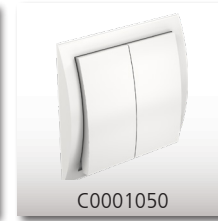
W0000400	Stainless steel multi-leaf link for motorising linked leaves to help open and close multi-leaf swing shutters. Min. and max. width of leaves: min. = 400 mm, max. = 650 mm
----------	---

Compatible with: **WIBAT® / WIBAT® APPLIQUE / WIBAT® LINTEAU**



MOTOR CONTROLS (SLIDING & FOLDING)

Item no.	Description
C0004780	433.92 MHz wireless RF switch, white
C0001050	Wired switch with 2 push buttons
C0004760	Repeater to double the range, RF programming
C0004770	Programmable 433.92 MHz 4-channel remote control + holder



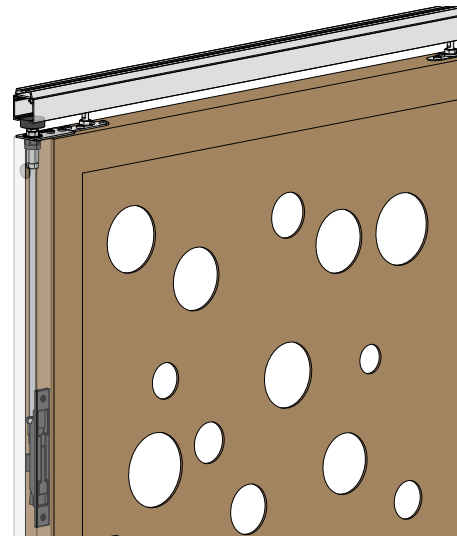
STOPS & LATCHES

C0012119N	Black composite swing shutter stop (Ø27 x 40 mm)
C0012119BE	Ditto, in beige
C0012119BL	Ditto, in white
1313	Nickel-plated brushed metal latch with stainless steel latch catch, fastened onto the upright of the opening. Travel = 18 mm
1317A	Latch with lever, RAL 9006 grey colour Height = 170 mm – Travel = 20 mm
1326A	Latch with lever, RAL 9006 grey colour Height = 260 mm – Travel = 20 mm
1351A	Latch with lever, RAL 9006 grey colour Height = 510 mm – Travel = 20 mm
1317G	Keeper for slide bolts 1317A, 1326A and 1351A



SUNSHADE STOP KIT

1310BR-1	Sunshade stop kit that allows blocking shutters for bays with a maximum height of 3100 mm. Mechanical lock with pressure pad operated by a lever latch. Mechanism to be embedded in the shutter.
----------	--



NEW



1310BR-1

ELECTROMAGNETIC & ELECTROMECHANICAL CLOSURES

W0000760	Electromagnetic closure (24 V DC – cable length: 3 m): - keeps shutter closed in case of strong winds (holding force: 12 daN) - Effective deterrent against intrusions To equip 1 pair of shutters (can be positioned at the top or bottom)
W0000770	Ditto for 1 pair of shutters with 2 electromagnetic closures (top and bottom)
W0000470	Electromagnetic closure (24V DC – cable length: 3 m) cable exits on side, bolt on left side for swing shutter Holding force: 80 daN
W0000471	Ditto with bolt on right side
W0000472	Ditto W0000470 with vertical cable exit
W0000473	Ditto W0000471 with vertical cable exit

Choosing the electromechanical closure:

*Both tables show item numbers for closures with cable exiting on the side.
Use the conversion table to find the equivalent with vertical cable exit.*

Openings with 1 leaf		Type of mounting:
Hinge pin side/shutter left*	right*	
W0000470	W0000471	on sill
W0000471	W0000470	under lintel

Openings with 2 leaves		Type of mounting:
Shutter lock on left*	right*	
W0000471	W0000470	on sill
W0000470	W0000471	under lintel

*seen from outside

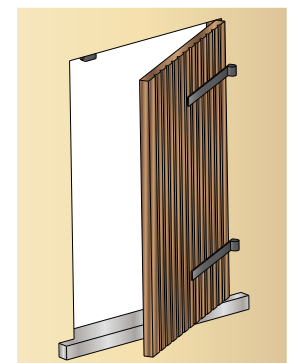
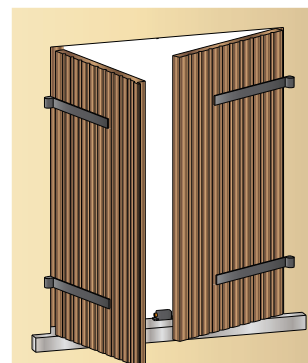
*seen from outside



ex: Mounting on sill

ex: Mounting under lintel

Conversion table according to cable exit	
side exit	vertical exit
W0000470	W0000473
W0000471	W0000472



The INTERIOR DESIGN range

113A

Systems for:

- FOLDING doors
- SEPARATING doors
- POCKET doors

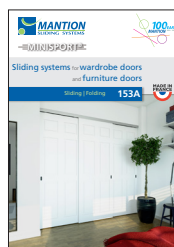


The CUPBOARD DOORS range

153A

Systems for:

- BUILT-IN CUPBOARD doors
- CABINET doors



The OPENTEC® range

Straight folding-sliding systems for:

- FRAMELESS GLASS PANELS
- WOOD PANELS
- GLAZED OPENINGS WITH WOOD JOINERY
- GLAZED OPENINGS WITH STEEL JOINERY

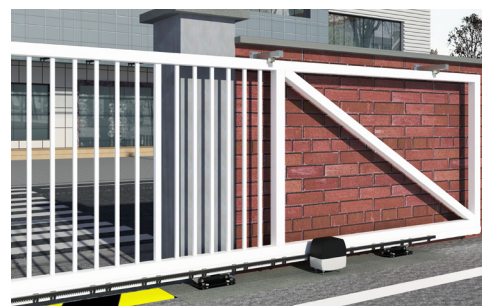


The GATES range

411A

Systems and motorised drives for:

- CANTILEVER gates
- Gates ON GROUND TRACKS
- HINGED gates

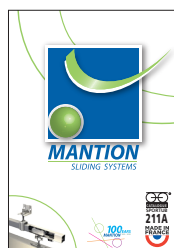


The SPORTUB® range

211A

Sliding systems for:

- STRAIGHT sliding doors up to 2000 kg
- ROUND THE CORNER doors
- FOLDING doors with same-size panels
- ACCORDION doors with half-panels
- UP AND OVER doors

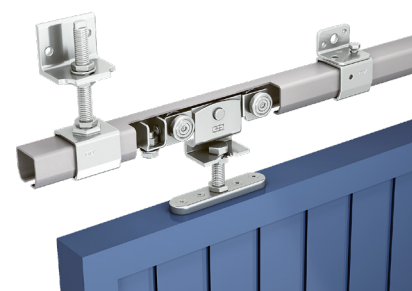


The HERCULE® range

911A

Sliding systems for:

- STRAIGHT sliding doors up to 3000 kg
- ROUND THE CORNER doors
- FOLDING doors with same-size panels
- ACCORDION doors with half-panels



LISTE NUMÉRIQUE

0026XA2	Plate	8 - 10 - 16 - 18
0026XA4	Plate	12 - 14 - 22
0027XA2	Plate	8 - 10
0031	Clevis	42
0036	Plate	40 - 42
0036XA2	Plate	40
0037	Plate	40 - 42
0037XA2	Plate	40
0051	Clevis	41 - 43
0056	Plate	41 - 43
0056XA2	Plate	41
0633D	Roller	42
0653D	Roller	43
10171	Fixed point	26 - 28 - 30
10172/...	Cog belt	16 - 20 - 22
10185	Mounting bracket	40 - 42
10185XA2	Mounting bracket	40
10186/250	Pelmet	40 - 42
10186/250XA2	Pelmet	40
10186A/125	Pelmet	40 - 42
10186A/250	Pelmet	40 - 42
10187/250	Profile	40 - 42
10187/250XA2	Profile	40
10189	Pulley	40
10190	Pulley	26 - 28 - 30
10191	Joining bracket	40
10192	Driving bracket	26 - 28 - 30
10213XA2	Claw stop	40
1054	Guide	44
1098-1	End stop	42 - 43
1099XA2	Guide	46
1102XA2	Guide	8 - 16 - 46
1103RG	Slider	8 - 10 - 16
1103RG2	Slider	46
1103RG3	Slider	46
1109/...	U-profile	8 - 10 - 16
1109A/...	U-profile	44 - 46
1109DU	Guide	46
1110/...	U-profile	44 - 46
11109/...	U-profile	8 - 10 - 16
11109E/...	Profile	44
1110DU	Guide	46
1110GDL	Slider	12 - 14 - 22
1110XA2/.	U-profile	12 - 14 - 22
1110XA4/.	U-profile	32 - 44 - 46
11110GDU	Slider	46
11110GU	Slider	12 - 14 - 22
1112/2	Guide	10 - 18 - 20
11121/...	Profile	44
11122/...	Profile	44
11123	Spacers	44
11174	Drive bracket	28
11208/200	Track	34
11208/600	Track	10 - 14 - 18
11208A/600	Track	32
11208AP/600	Track	32 - 36
11208P/600	Track	8 - 12 - 16 - 22
11261/600	Pelmet	8 - 12 - 16
11263/600	Pelmet	10 - 18 - 32
11263L/600	Pelmet	20 - 36
11264L/600	Pelmet	14 - 24 - 26
11266	End caps	10 - 18 - 32
11266L	End caps	20
11266M	End caps	36
11267L	End caps	14 - 24 - 26
11267M	End caps	36
11269	Pelmet clamps	10 - 14 - 18

1128	Guide	8 - 10 - 16
11280LXA2	Roller	8 - 16 - 20 - 26
11280LXA4	Roller	32
11280XA2	Roller	8 - 10 - 18 - 34
11280XA4	Roller	32
11282LXA4	Roller	12 - 14 - 22
11286XA2	Track stop	8 - 10 - 12
11286XA2-SYN	Track stop	16 - 20 - 22
11286XA4	Track stop	32
11287XA2	Track stop	8 - 10 - 12 - 14
11287XA4	Track stop	32
11288M15	Soft-closer	10 - 18
1128A	Guide	44
1128ARG	Guide	34 - 44
1128D	Guide	44
1128DRG	Guide	26 - 28 - 30
1128GU	Guide	44
1129	Slider	44
11291	Joining bracket	16 - 20 - 22
11293	Mounting bracket	10 - 18 - 20
11293A	Mounting bracket	32
11293D	Mounting bracket	14 - 24 - 26
11293DA	Mounting bracket	32
11293MXA4	Track connector	34
11294A	Mounting bracket	8 - 12 - 16
1129D	Slider	44
1130	Guide	44
1131DXRG	Slider	26 - 28 - 30
1131XRG	Slider	10 - 18 - 20
1300	Shutter stays	56
1300L	Shutter stays	56
1310BR-1	Sunshade stop kit	57
1313	Bolt	57
1317A	Bolt	57
1317G	Keeper	57
1326A	Bolt	57
1351A	Bolt	57
3530/...	Track	42
3531	Box bracket	42
5040/...	Track	43
5141	Box bracket	43
5141M	Joining bracket	43
5144	Box bracket	43
5144M	Joining bracket	43
9010/...	Track	40
9010XA2/...	Track	40
9011	Box bracket	40
9011XA2	Box bracket	40
9030/...	Track	41
9030XA2/...	Track	41
9038H	Box bracket	41
9038H2	Box bracket	41
9038HXA2	Box bracket	41
9038V	Box bracket	41
9038V2	Box bracket	41
9038VXA2	Box bracket	41
9138	Stop	41
9139XA2	Stop	41
9235N	Track	41
9235XSA2	Roller	41
9318N	Roller	40
9318NLX	Roller	40
C0000265	Power	51 - 56
C0000275	Power	51 - 56
C0000470	Sealing kit	51 - 56
C0000485	Sealing kit	51 - 56
C0000525	Screen + nozzles	51 - 56

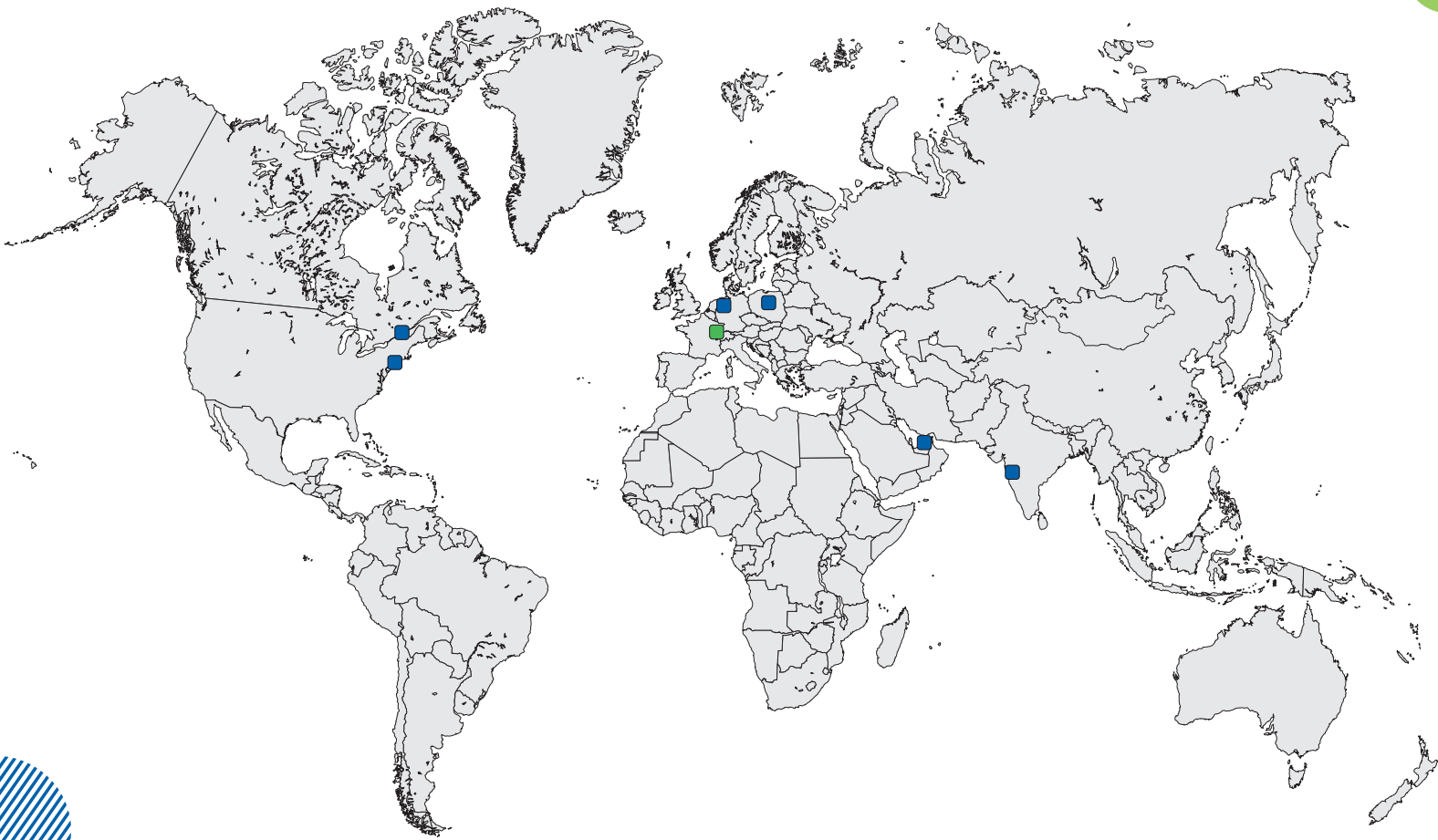
C0000545	Finishing ring	51 - 56
C0001050	Wired switch	57
C0004760	Repeater	57
C0004770	Remote control	57
C0004780	Wireless RF switch	57
C0012119BE	Stop	57
C0012119BL	Stop	57
C0012119N	Stop	57
C0012620	Harness extension	36
C0014200	Radio remote control	38
C0014200N	Radio remote control	38
C0014340	Extension lead	38
C0014350	Extension lead	38
C0014360	Charger	38
K0001170	Battery pack	36
K0001620	Solar battery pack	38
K0001630	Solar panel	38
W0000010	WIBAT wireless kit	50
W0000020	WIBAT wired kit	50
W0000040	WIBAT wireless kit	50
W0000050	WIBAT wired kit	50
W0000070	WIBAT wireless kit	50
W0000080	WIBAT wired kit	50
W0000230	Power	51 - 56
W0000240	WIBAT wireless kit	50
W0000250	WIBAT wired kit	50
W0000270	WIBAT wireless kit	50
W0000290	WIBAT wired kit	50
W0000400	Multi-leaf link	52 - 54 - 56
W0000450	Drilling template	51 - 56
W0000460	Drilling template	51 - 56
W0000470	Electromechanical closure	52 - 54 - 57
W0000471	Electromechanical closure	52 - 54 - 57
W0000472	Electromechanical closure	52 - 54 - 57
W0000473	Electromechanical closure	52 - 54 - 57
W0000720	WIBAT wireless kit	50
W0000730	WIBAT wired kit	50
W0000760	Electromagnetic closure	52 - 54 - 57
W0000770	Electromagnetic closure	52 - 54 - 57
W0000990	Drive housing	51 - 56
W0001000	WIBAT APPLIQUE wireless kit	52
W0001020	WIBAT APPLIQUE wireless kit	52
W0001030	WIBAT APPLIQUE wireless kit	52
W0001040	WIBAT APPLIQUE wired kit	52
W0001050	WIBAT APPLIQUE wired kit	52
W0001060	WIBAT APPLIQUE wired kit	52
W0001300	WIBAT LINTEAU wireless kit	54
W0001310	WIBAT LINTEAU wireless kit	54
W0001330	WIBAT LINTEAU wireless kit	54
W0001340	WIBAT LINTEAU wireless kit	54
W0001350	WIBAT LINTEAU wired kit	54
W0001360	WIBAT LINTEAU wired kit	54
W0001380	WIBAT LINTEAU wired kit	54
W0001390	WIBAT LINTEAU wired kit	54
W0002500	SYCOMM motor	36
W0002510	SYCOMM motor	36
W0002520	SYCOMM motor	36
W0002530	SYCOMM motor	36
W0002540	SYCOMM SOLAR motor	38
W0002550	SYCOMM SOLAR motor	38
W0002600	SYCOMM motor	36
W0002610	SYCOMM motor	36
W0002620	SYCOMM motor	36
W0002630	SYCOMM motor	36
WSLIDE-2RGV1	WIN-SLIDE 2 set	34
WSLIDE-R2GV2	WIN-SLIDE 2 set	34

MADE IN FRANCE
SINCE 1920



MANTION® SAS

7 rue Gay Lussac | FRANCE - 25000 Besançon
Tel. + 33 3 81 50 56 77 | Fax. + 33 3 81 53 29 76
E-mail: mantion@mantion.com



Allemagne / Autriche

Germany / Austria

Mantion Baubeschläge GMBH

Dieselstraße 18
D-42579 HEILIGENHAUS
Tél. + 49 2056 58 26 90
Fax. + 49 2056 58 26 99
Email : info@mantion.de
www.mantion.de

Moyen Orient

Middle East

Dubai Branch Office

Jafza South, unit no. S101 23 O 032,
Jebel Ali Free Zone, Dubai, UAE
Dubai & Bahrain : Tél. +971 56 174 58 44
Reste du Moyen Orient : +971 56 739 66 11
Email : export@mantion.com
www.mantion.com

Europe de l'Est

East Europe

Mantion Polska

ul Boruty 2a
PL-03 769 WARSZAWA
Tél. + 48 22 818 77 22
Fax. + 48 22 818 99 78
Email : biuro@valcomp.com.pl
www.valcomp.com.pl

Inde

India

Mantion India Private Ltd

G-19, T.V. Estate, 248/A, S.K. Ahire Marg, Worli
Mumbai - 400030. INDIA
Mobile. +91 (0) 9819 30 38 78
Email : support.india@mantion.com
www.mantion.com

Amérique du Nord

North America

Mantion Canada

12-360 boul. Séminaire N
Saint-Jean-sur-Richelieu
Québec J3B 5L1
Tél. + 1 (450) 529 1315
E-mail : contact@mantion-na.com
www.mantion.ca

Mantion USA

Mantion US INC
450 7th avenue, suite 1501
New York NY 10123
Tel. + 1 (475) 289-0254
E-Mail: contact@mantion-us.com
www.mantion.us

DESIGNER AND MANUFACTURER OF SLIDING SYSTEMS SINCE 1920